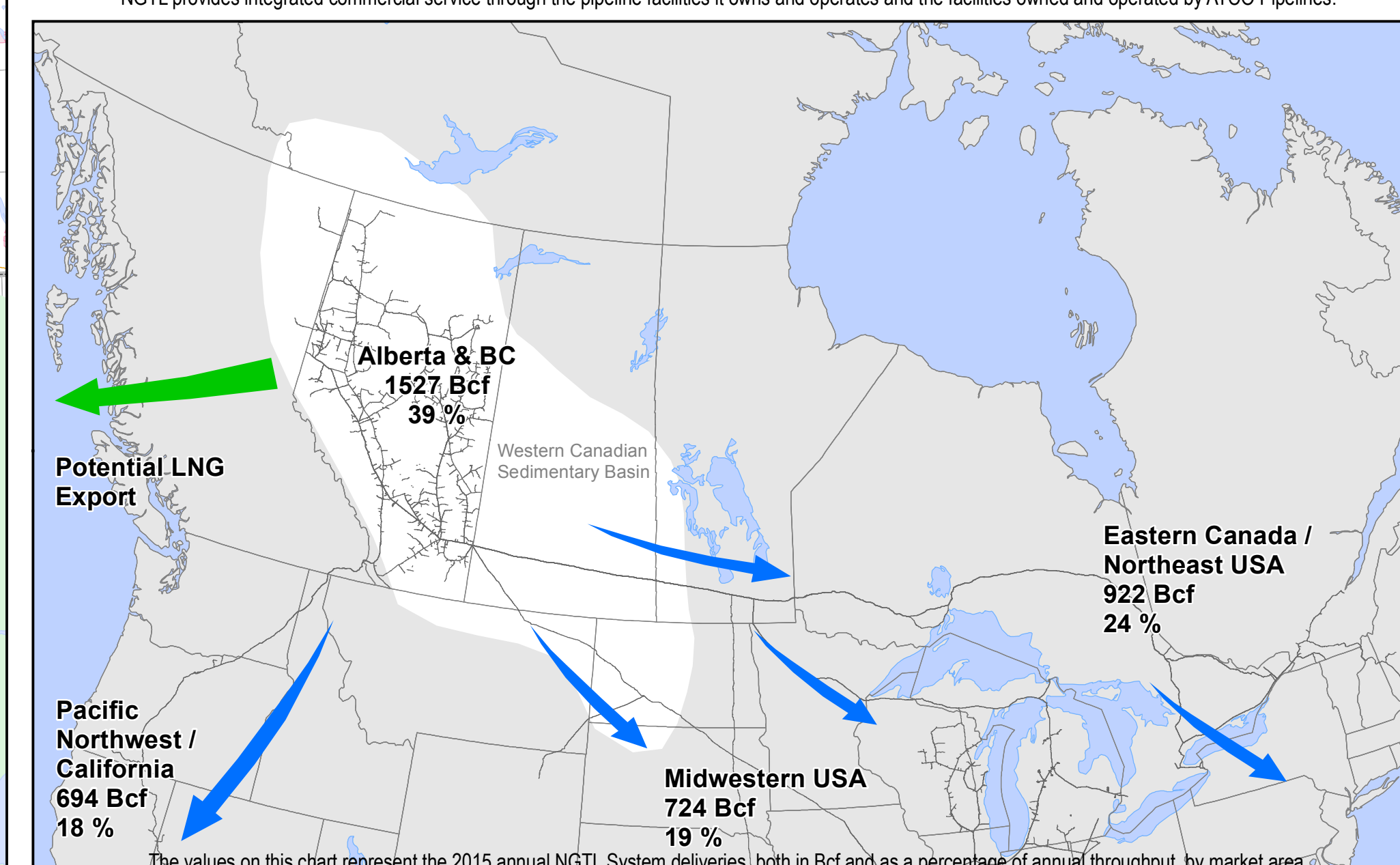


NGTL System

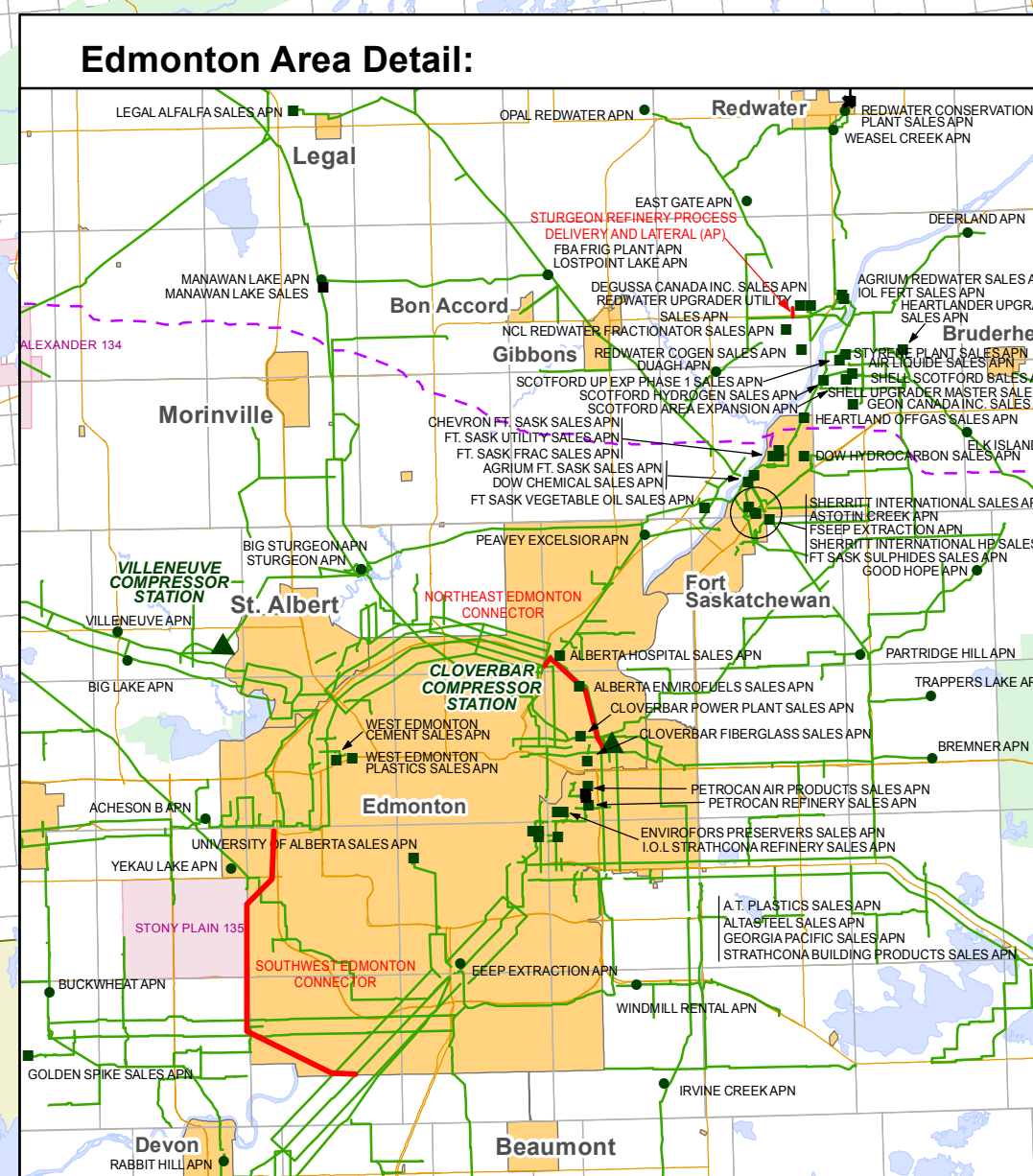
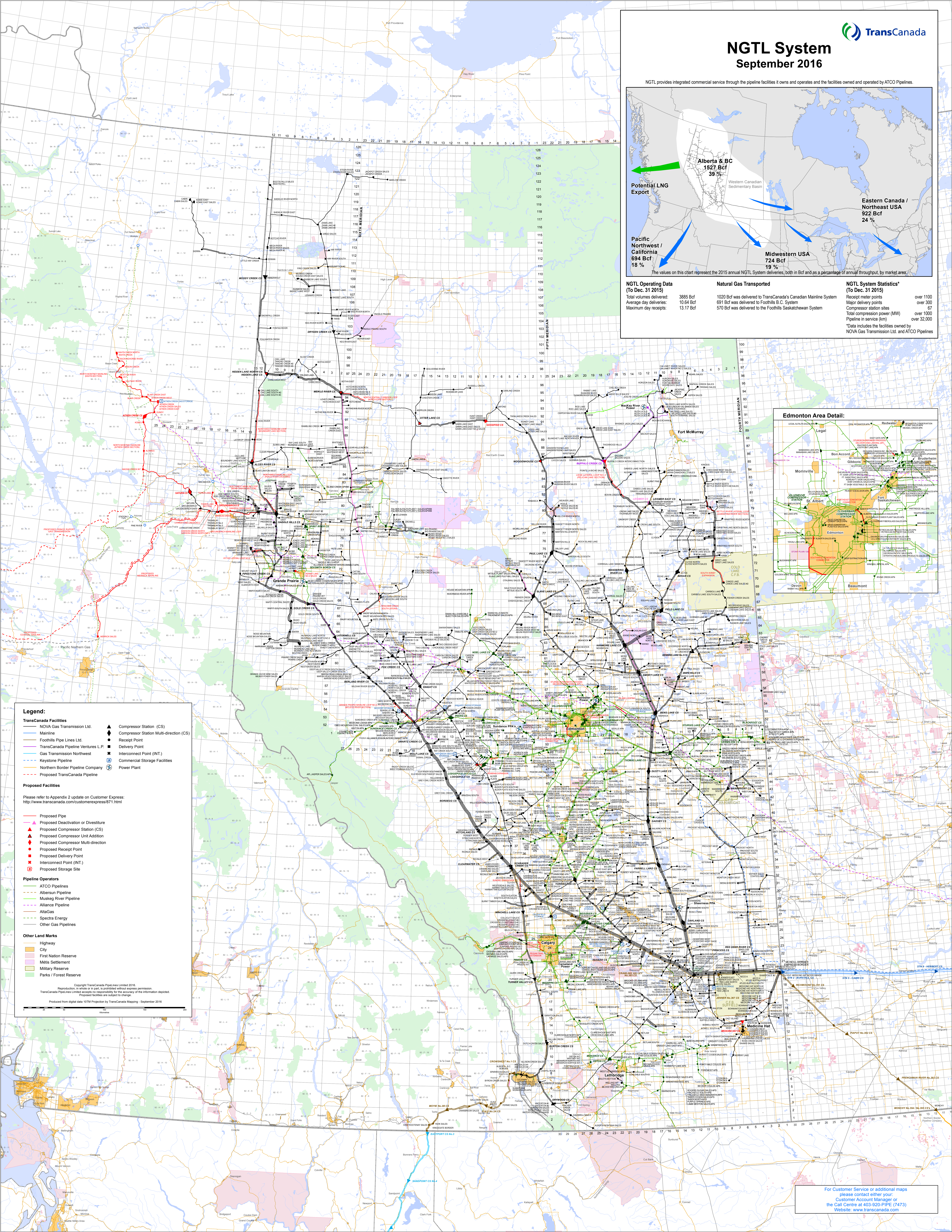
September 2016

NGTL provides integrated commercial service through the pipeline facilities it owns and operates and the facilities owned and operated by ATCO Pipelines.



NGTL Operating Data (To Dec. 31 2015)		Natural Gas Transported		NGTL System Statistics* (To Dec. 31 2015)	
Total volumes delivered:	3885 Bcf	1020 Bcf was delivered to TransCanada's Canadian Mainline System	591 Bcf was delivered to Foothills B.C. System	Receipt meter points	over 1100
Average day deliveries:	10.64 Bcf	570 Bcf was delivered to the Foothills Saskatchewan System		Major delivery points	over 300
Maximum day receipts:	13.17 Bcf			Compressor station sites	over 67
				Total compressor power (MW)	over 10000
				Pipeline in service (km)	over 32,000

*Data includes the facilities owned by NOVA Gas Transmission Ltd. and ATCO Pipelines



Legend:

TransCanada Facilities

- NOVA Gas Transmission Ltd.
- Mainline
- Foothills Pipe Lines Ltd.
- TransCanada Pipeline Ventures L.P.
- Gas Transmission Northwest
- Keystone Pipeline
- Northern Border Pipeline Company
- Proposed TransCanada Pipeline

Proposed Facilities

Please refer to Appendix 2 update on Customer Express: <http://www.transcanada.com/customerexpress/871.html>

- Proposed Pipe
- Proposed Deactivation or Divestiture
- Proposed Compressor Station (CS)
- Proposed Compressor Unit Addition
- Proposed Compressor Multi-direction
- Proposed Receipt Point
- Proposed Delivery Point
- Proposed Interconnect Point (INT.)
- Proposed Storage Site

Pipeline Operators

- ATCO Pipelines
- Albertson Pipeline
- Muskey River Pipeline
- Alliance Pipeline
- AltaGas
- Spectra Energy
- Other Gas Pipelines

Other Land Marks

- Highway
- City
- First Nation Reserve
- Métis Settlement
- Military Reserve
- Parks / Forest Reserve

Copyright TransCanada Pipelines Limited 2016.
 Reproduction, in whole or in part, is prohibited without express permission.
 TransCanada Pipelines Limited accepts no responsibility for the accuracy of the information depicted.
 Proposed facilities are subject to change.
 Produced from digital data using WTM Projection by TransCanada Mapping - September 2016

For Customer Service or additional maps
 please contact either your
 Customer Account Manager or
 the Call Centre at 403-920-PIPE (7473)
 Website: www.transcanada.com