



NGTL System and Foothills Pipelines Ltd.

CUSTOMER OPERATIONS MEETING

FOR INFORMATIONAL PURPOSES ONLY



10/03/2024

Forward Looking Information

- ❖ This presentation includes certain forward-looking information. Statements that are forward-looking are based on certain assumptions and on what we know and expect today and generally include words like anticipate, expect, believe, may, will, should, estimate or other similar words.
- ❖ The information provided is for informational purposes only and is not to be relied upon for any other purpose whatsoever. The information is based upon certain assumptions that may or may not be accurate, and therefore is subject to various risks and uncertainties. TC Energy shall not be liable for damages sustained as a result of any use or reliance on such information.
- ❖ The outages listed in this presentation are not an exhaustive list. Outage date, duration, and impact may be subject to change. Refer to the Daily Operating Plan (DOP) for all planned outages with potential service impact.

No
impact to FT

Refers to outage periods where FT impact is not expected

Potential
impact to FT

Refers to outage periods where there is potential of FT impact

Partial
impact to FT

Refers to outage periods where FT impact is expected

Important Notes



Outage information in this presentation may not be accurate beyond October 3, 2024



For current outage and capability information, please refer to the most recent Daily Operating Plan ([DOP](#)), the [Dashboard](#) and [bulletins](#)



This meeting covers broad operational and project-related topics that impact operations on the NGTL and Foothills systems. For information on focused Commercial, Operational and Regulatory topics, please contact your [Marketing Representative](#)



Agenda

1. Review of October Operations
2. Review of Upcoming 2024 Outages

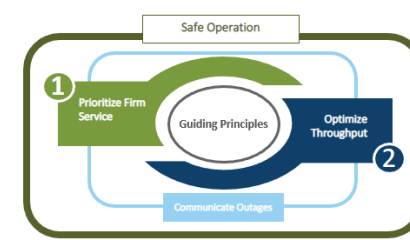


10/03/2024

Review of September Operations



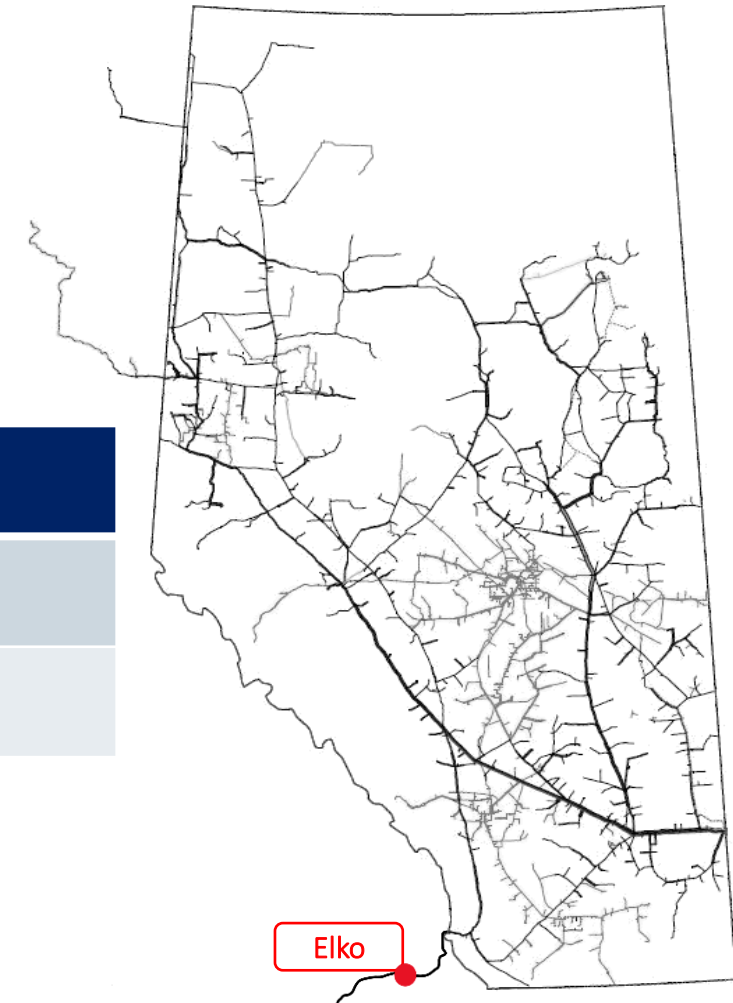
Elko – Compressor Station Maintenance



Background:

- **Unplanned:**
 - Elko Compressor Station Maintenance: September 7 – 9
 - Unplanned outage work required following planned outage in August
- **Capability communicated in DOP:**
 - FHBC: 69 10⁶m³/d
- **Service Allowable:**
 - FHBC: 0% IT, Partial FT

Bulletin Date	Effective Date	Service Allowable	Comments
Sept 6	Sept 7 (08:00 MST)	FHBC: 0% IT, Partial FT (69)	Bulletin issued for unplanned Elko C/S outage
Sept 8	Sept 9 (08:00 MST)	FHBC: 100% IT, 100% FT	Elko outage scope and OBA recovery completed



2024 Operational Outlook

(From DOP as of Wednesday, October 3)



2024 Outages

- All known planned outages at this time have been added to the DOP
- We will continue to make best efforts to limit changes of dates to larger impacting outages; however, Start and End Dates, Durations, Capability, Area of impact may be revised as new information becomes available or further optimization opportunities are identified

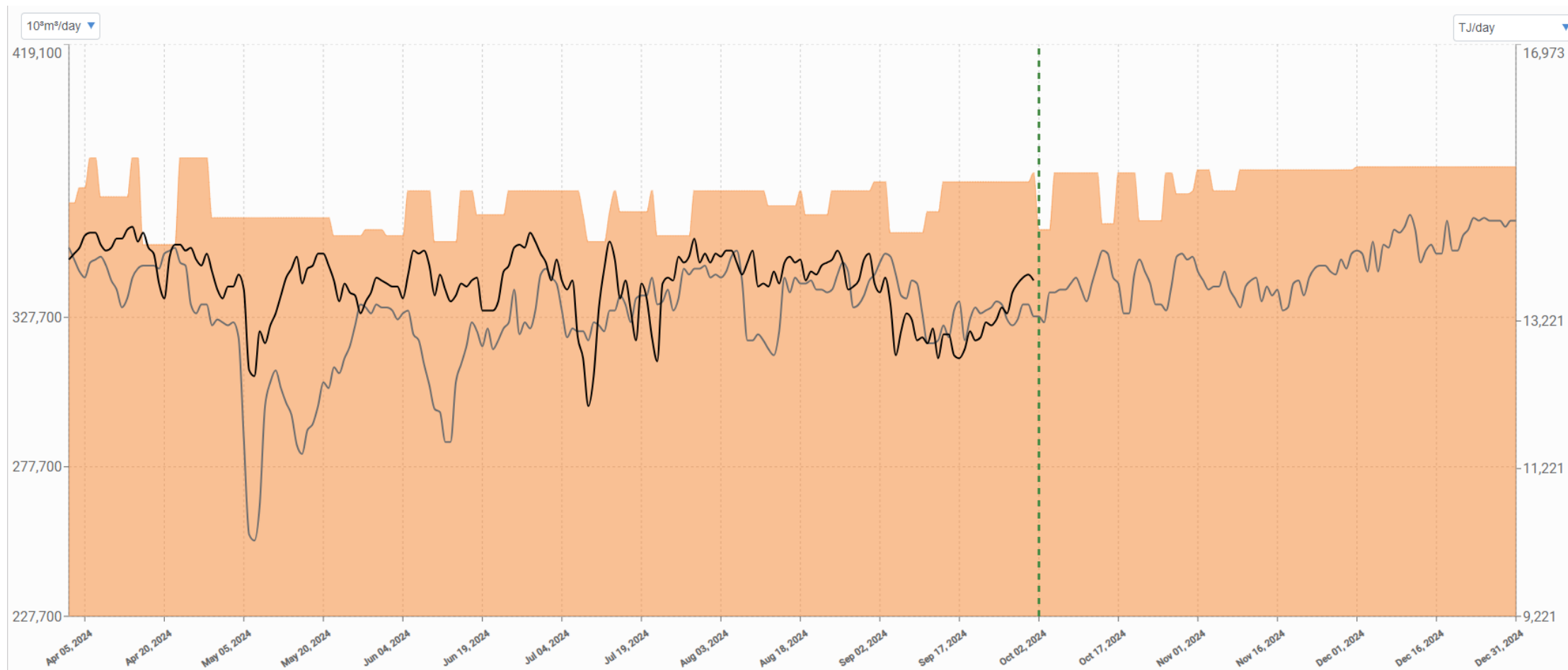
Outages and/or maintenance work is posted to the DOP if there is reasonable expectation that the event could or will result in a change to service authorization levels.

Optimization efforts are on-going, and we will continue to focus on safety, optimizing system capacity and minimizing outage impacts.



Upstream James River

Capability - Actual Flow - Historical Flow



May not be accurate beyond October 3. Please refer to the DOP on TC Customer Express for current outage information.



Upstream James River Receipt Area (USJR)

No
impact to FT

Potential
impact to FT

Partial
impact to FT

Outage Description	Start	End	USJR Outage Capability (10 ⁶ m ³ /d)	USJR Impact (10 ⁶ m ³ /d)	Area Outage Capability (10 ⁶ m ³ /d)	Outage Area Typical Flows (10 ⁶ m ³ /d)	Service Allowable Location/Area
NPS 48 Tanghe Creek Loop 2 – Pipeline Maintenance	2-Oct-24	4-Oct-24	357	19	225	195-225	Potential impact to FT-R USJR U/S Latornell
Meikle River D5 – Compressor Station Maintenance	14-Oct-24	16-Oct-24	359	17	227	195 - 225	Potential impact to FT-R USJR U/S Latornell
Goodfish – Compressor Station Maintenance	21-Oct-24	25-Oct-24	360	16	228	195 - 225	Potential impact to FT-R USJR U/S Latornell
Latornell – Compressor Station Maintenance	28-Oct-24	30-Oct-24	369	7	274	230 - 260	Potential impact to FT-R USJR U/S Berland River
Latornell A2 – Compressor Station Maintenance	28-Oct-24	31-Oct-24	370	6	275	230 - 260	Potential impact to FT-R USJR U/S Berland River
Gold Creek B3 – Compressor Station Maintenance	4-Nov-24	8-Nov-24	370	7	275	250 - 265	Potential impact to FT-R USJR U/S Berland River

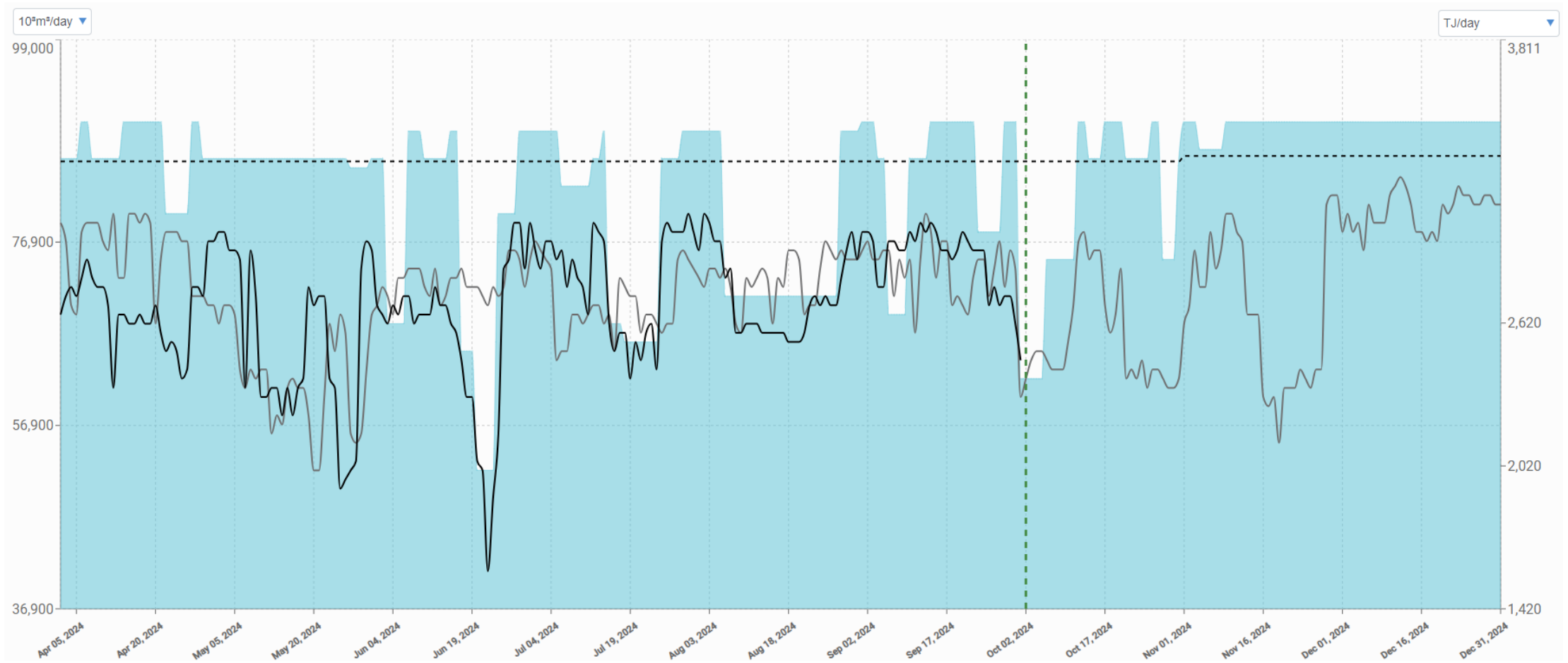
May not be accurate beyond October 3. Please refer to the DOP on TC Customer Express for current outage information.



Alberta-B.C. Border

(includes both NGTL and Foothills BC outages)

■ Capability - Actual Flow - Historical Flow - - Contracts



May not be accurate beyond October 3. Please refer to the DOP on TC Customer Express for current outage information.



West Gate Delivery Area (WGAT)

No
impact to FT

Potential
impact to FT

Partial
impact to FT

Outage Description	Start	End	Capability (10 ⁶ m ³ /d)	Impact (10 ⁶ m ³ /d)	Service Allowable Location/Area
Moyie – Compressor Station Maintenance	1-Oct-24	5-Oct-24	62	28	Partial Impact to FT Foothills BC
Turner Valley – Compressor Station Maintenance	1-Oct-24	11-Oct-24	75	15	Potential Impact to FT-D Alberta/BC and Alberta/Montana Borders Segment 22 and Partial 21
Crowsnest K – Compressor Station Maintenance	28-Oct-24	30-Oct-24	75	15	Potential Impact to FT Foothills BC

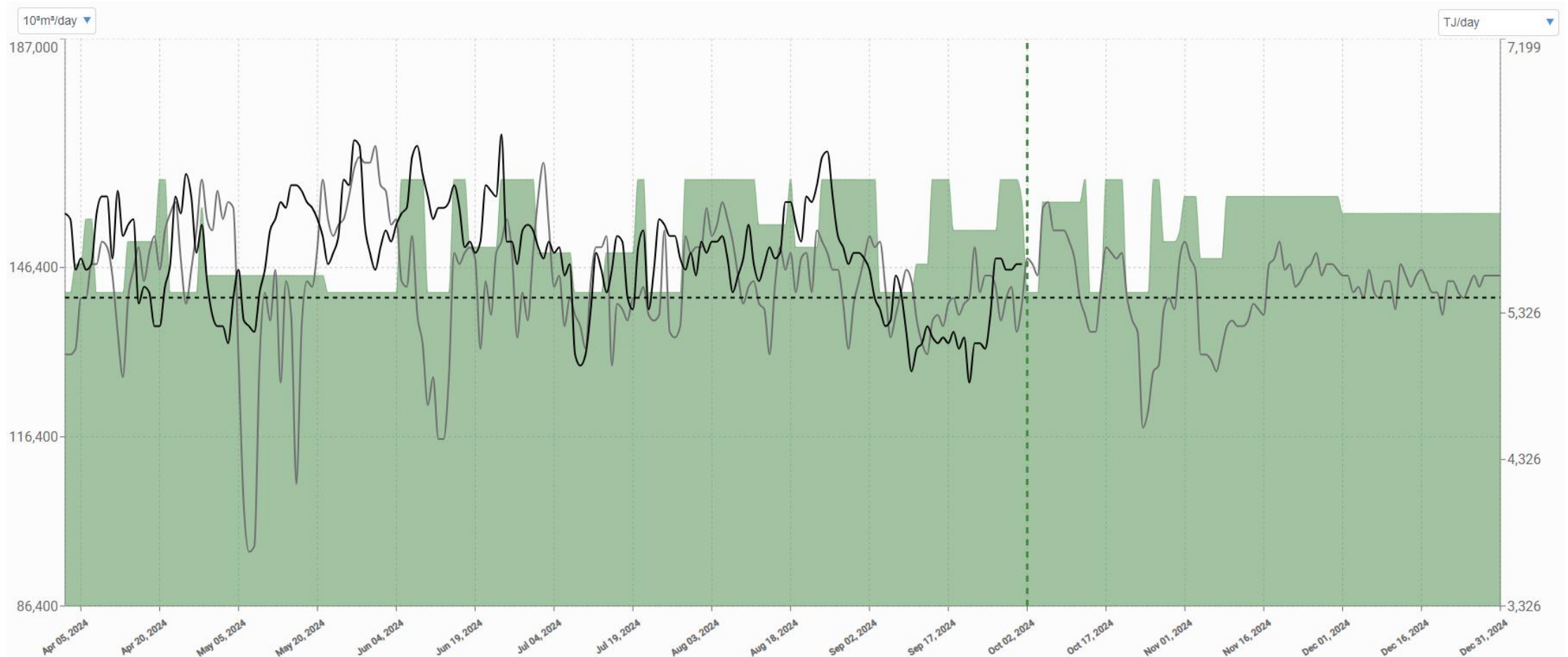
Note: Outages located in the USJR area show up in the WGAT table in DOP to indicate a broad area restriction could be applied to reduce flows through the bottleneck but have been excluded from this slide to avoid duplication

May not be accurate beyond October 3. Please refer to the DOP on TC Customer Express for current outage information.



East Gate

■ Capability — Actual Flow - - Historical Flow - - Contracts



May not be accurate beyond October 3. Please refer to the DOP on TC Customer Express for current outage information.



East Gate Delivery Area (EGAT)

No
impact to FT

Potential
impact to FT

Partial
impact to FT

Outage Description	Start	End	Capability (10 ⁶ m ³ /d)	Impact (10 ⁶ m ³ /d)	Service Allowable Location/Area
Crawling Valley – Compressor Station Maintenance	1-Oct-24	12-Oct-24	158	4	No impact to FT-D anticipated Empress/McNeill Borders Segments 15, 16, 17, 18, 19, 20, 23, partial 21, and partial 28

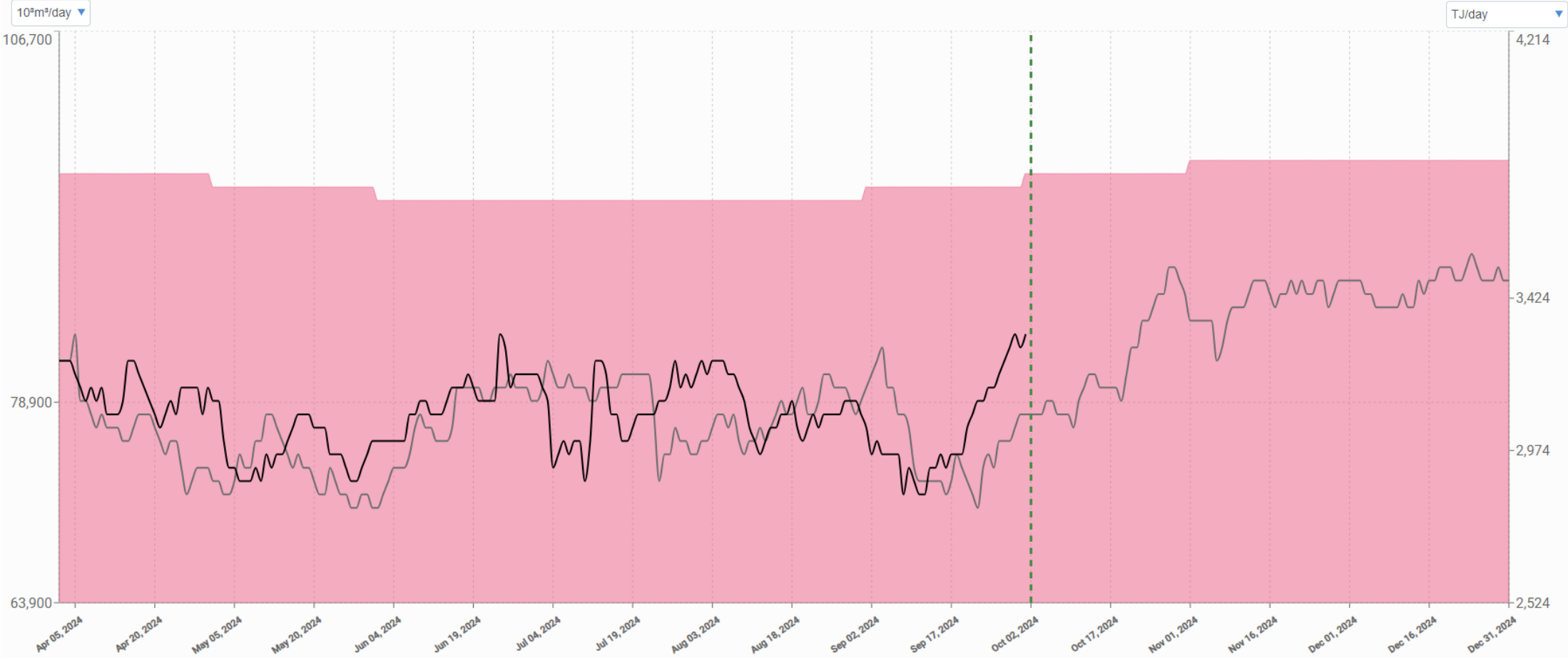
Note: Outages located in the USJR area show up in the EGAT table in DOP to indicate a broad area restriction could be applied to reduce flows through the bottleneck but have been excluded from this slide to avoid duplication

May not be accurate beyond October 3. Please refer to the DOP on TC Customer Express for current outage information.



Oil Sands Delivery Area

Capability - Actual Flow - Historical Flow



May not be accurate beyond October 3. Please refer to the DOP on TC Customer Express for current outage information.



Northeast Delivery Area (NEDA) Oilsands Delivery Area (OSDA)

No
impact to FT

Potential
impact to FT

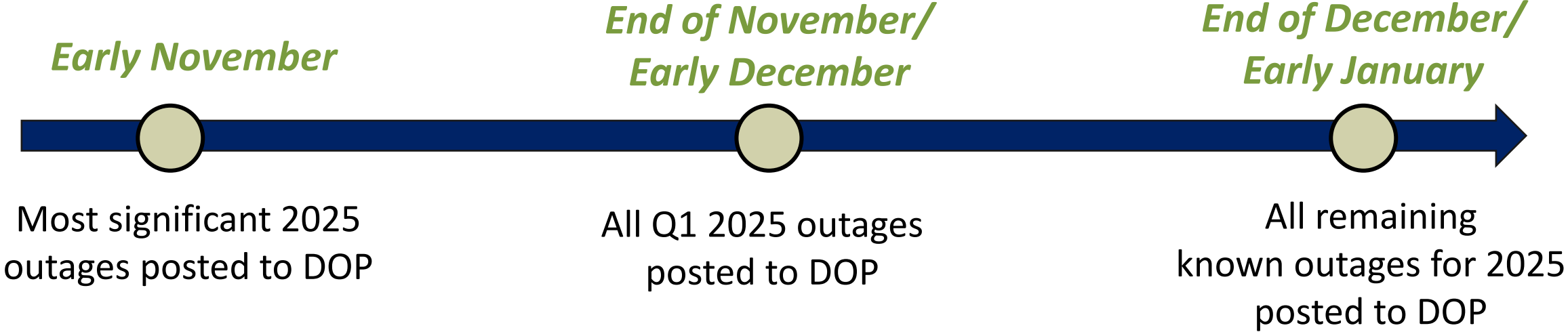
Partial
impact to FT

There are currently no outages planned that have potential to impact service specific to OSDA or NEDA

May not be accurate beyond October 3. Please refer to the DOP on TC Customer Express for current outage information.



2025 Outage Communication Schedule



Refer to the Daily Operating Plan (DOP) for the most current outage information



CONTACTS



MARKETING REPS

[Customer Express Contacts
\(tccustomerexpress.com\)](https://tccustomerexpress.com)

MINH BADAU

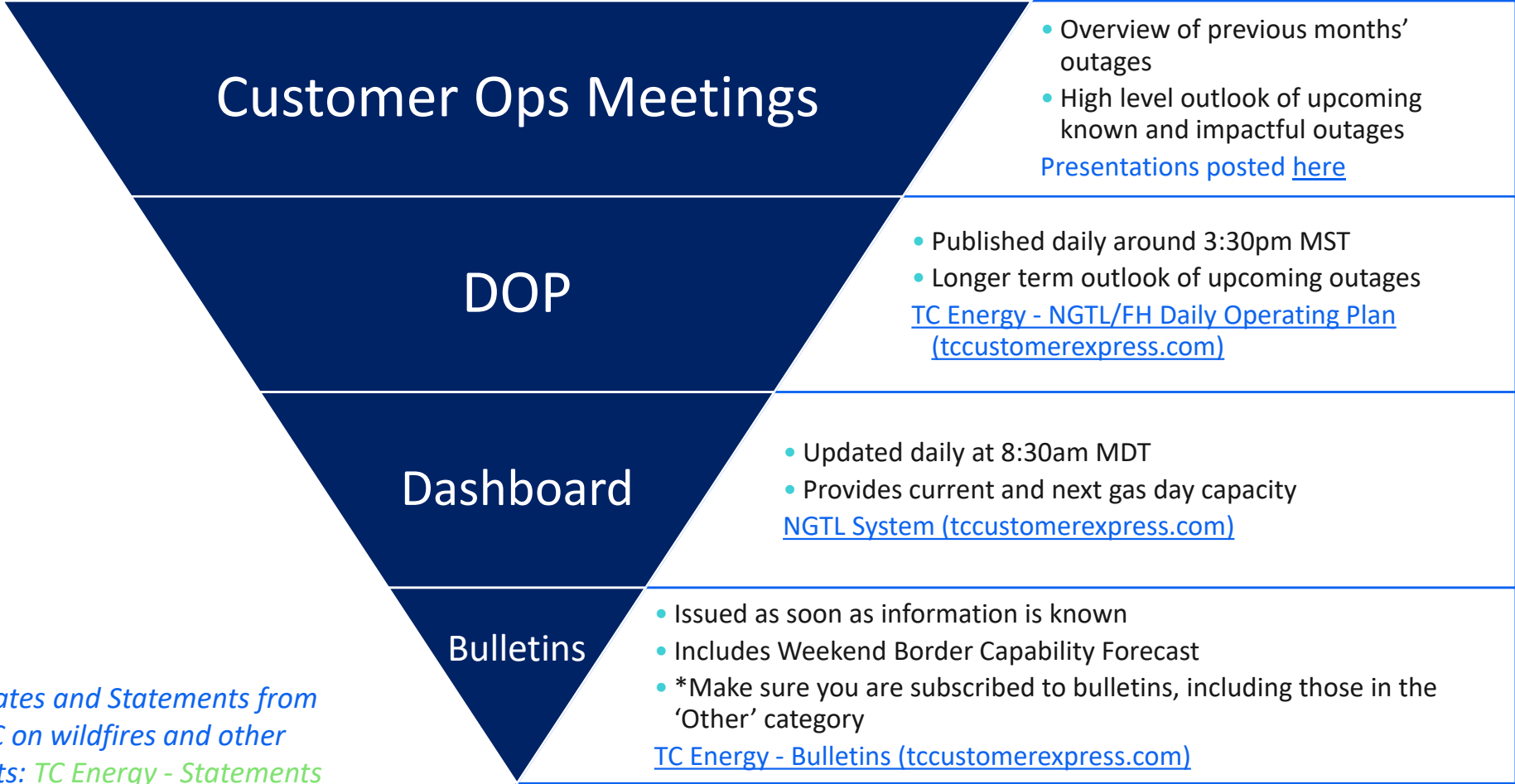
Chair, NGTL/FH Customer Ops

403.920.5804

minh_badau@tcenergy.com



Outage Communication Tools: Order



Updates and Statements from TC on wildfires and other events: [TC Energy - Statements](#)

Each level of communication supersedes all information provided in communications above it.

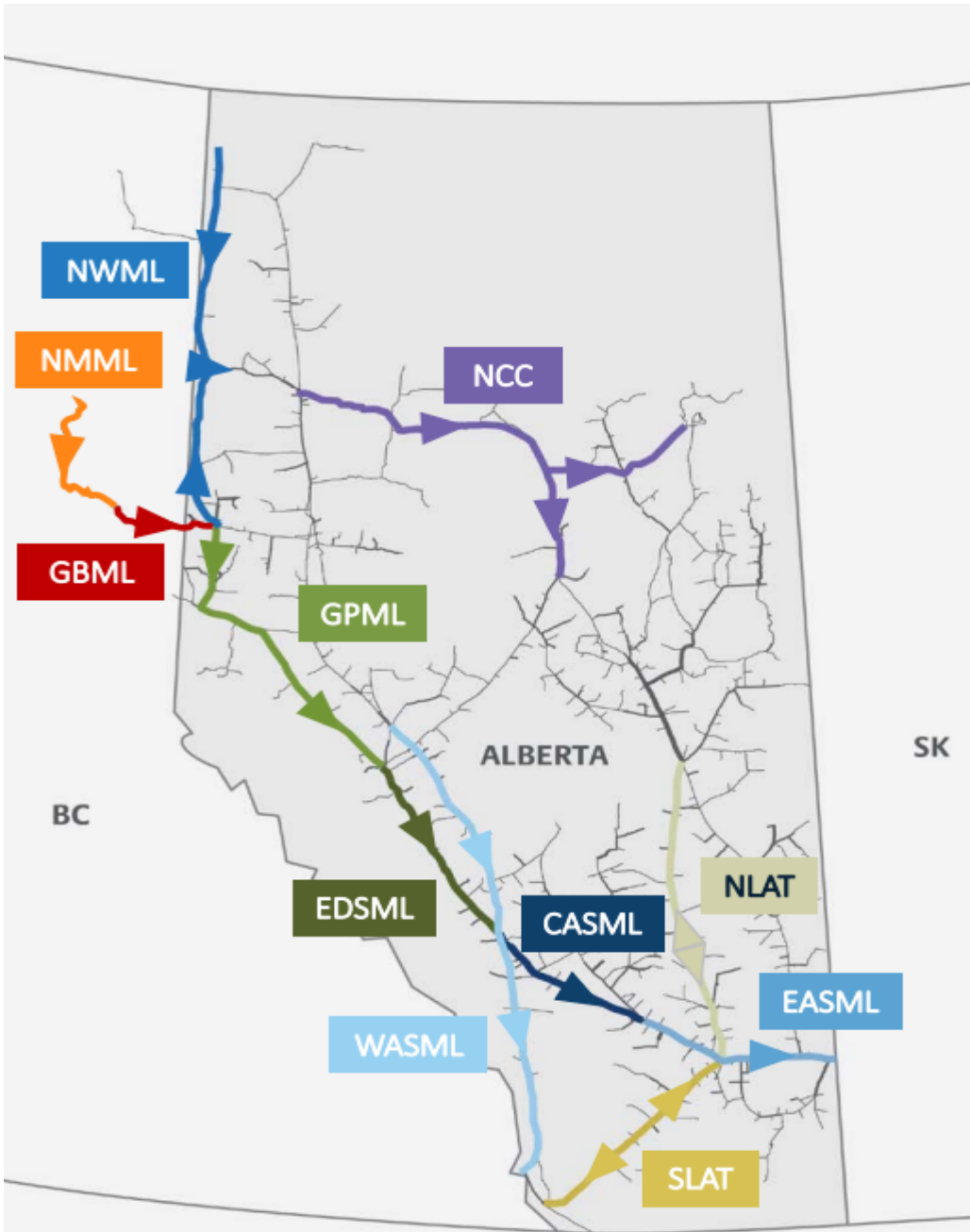


Glossary of Terms

- ❖ **DOP:** Daily Operating Plan [DOP](#)
- ❖ **NGTL:** Nova Gas Transmission Ltd.
- ❖ **FH:** Foothills Pipeline System (BC or SK)
- ❖ **ISD:** In-Service Date
- ❖ **ILI:** Inline Inspection
- ❖ **Transportation Services**
 - ❖ **IT-R:** Interruptible Transportation - Receipt
 - ❖ **IT-D:** Interruptible Transportation - Delivery
 - ❖ **FT-R:** Firm Transportation - Receipt
 - ❖ **FT-D:** Firm Transportation - Delivery

- ❖ **Operational Areas**
 - ❖ **USJR:** Upstream James River
 - ❖ **WGAT:** West Gate
 - ❖ **EGAT:** East Gate
 - ❖ **OSDA:** Oilsands Delivery Area
 - ❖ **NEDA:** North-East Delivery Area

Commonly Referenced Flow Paths



- North Montney Mainline (NMML)
- Groundbirch Mainline (GBML)
- Northwest Mainline (NWML)
- North Central Corridor (NCC)
- Grande Prairie Mainline (GPML)
- Edson Mainline (EDSML)
- Western Alberta System Mainline (WASML)
- Central Alberta System Mainline (CASML)
- Eastern Alberta System Mainline (EASML)
- South Lateral (SLAT)
- North Lateral (NLAT)

