

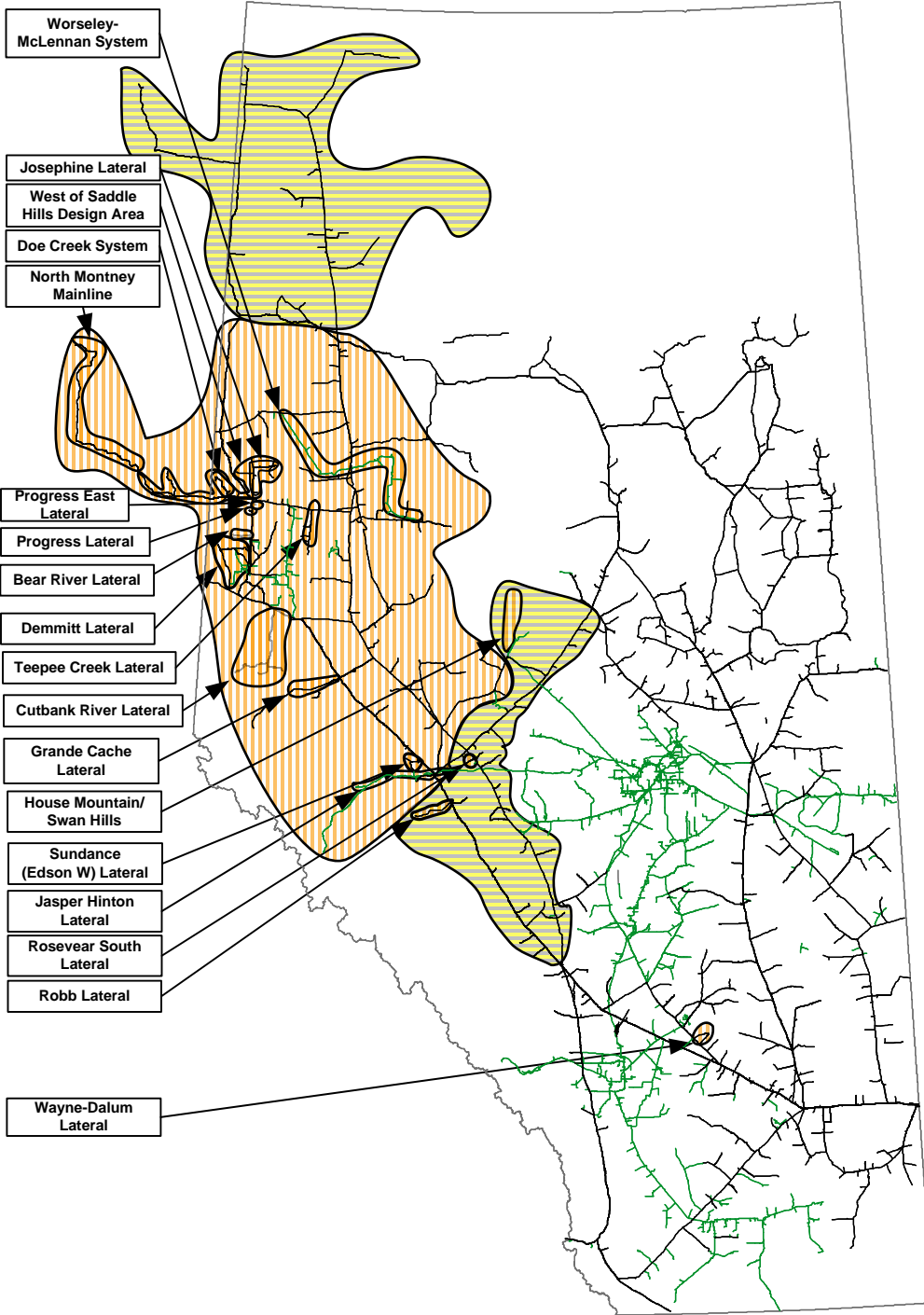


TC Energy's NGTL System FT-R Availability Map for February 2025

Note: The areas identified on this map are either Approaching Contract Capacity or Fully Contracted (see definitions below). This information is a snapshot as of February, 2025 and is subject to change. Please contact your Marketing Representative for clarification or additional information.

Approaching Contract Capacity*  + 95%
Fully Contracted Areas** 



- Fully Contracted Laterals:**
- Bear River Lateral
 - Bear River West
 - Cutbank River Lateral
 - Bilbo
 - Copton Creek
 - Copton Creek No 2
 - Cutbank River
 - Cutbank River North
 - Musreau Lake
 - Musreau Lake No 2
 - Musreau Lake North
 - Musreau Lake North No 2
 - Musreau Lake West
 - Narraway River
 - Nose Mountain
 - Demmitt Lateral**
 - Brainard Lake
 - Demmitt
 - Goodfare
 - Hythe
 - Dismal Creek Lateral**
 - Dismal Creek
 - Doe Creek System**
 - Bay Tree
 - Doe Creek
 - Doe Creek South
 - Doe Creek South #2
 - Gordondale Border
 - Gordondale East
 - Henderson Creek
 - Grande Cache Lateral**
 - Bolton Creek APGC
 - Jayar APGC
 - Prairie Creek APGC
 - House Mountain/Swan Hills**
 - Inverness River APN
 - Jasper Hinton Lateral**
 - Fishnet APN
 - Fishnet B APN
 - Hargwen APN
 - Hinton APN
 - McLeod River APN
 - Medicine Lodge APN
 - South Carrot APN
 - Sundance Creek APN
 - Josephine Lateral**
 - Fourth Creek
 - Fourth Creek West
 - Whitburn East
 - North Montney Mainline**
 - Aitken Creek South
 - Aitken Creek West No. 2
 - Altares
 - Altares South
 - Blair Creek
 - Gundy
 - Gundy West
 - Kobes
 - Mackie Creek North
 - Old Alaska
 - Townsend Summary
 - Progress Lateral**
 - Progress
 - Progress East Lateral**
 - Progress East
- Fully Contracted Laterals (cont.):**
- Robb Lateral**
 - Mitchell Creek
 - Robb
 - Rosevear South Lateral**
 - Rosevear South
 - Sundance (Edson W) Lateral**
 - Sundance Creek
 - Sunvalley
 - Teepee Creek Lateral**
 - Teepee Creek
 - Webster
 - Wayne-Dalum Lateral**
 - Wayne-Dalum
 - West of Saddle Hills Design Area**
 - Bay Tree
 - Bonanza Summary
 - Dawson Creek
 - Dawson Creek East Summary
 - Dawson Creek North Summary
 - Doe Creek
 - Doe Creek South
 - Doe Creek South No. 2
 - Fourth Creek
 - Fourth Creek West
 - Gordondale Border
 - Gordondale East
 - Groundbirch
 - Groundbirch East
 - Henderson Creek
 - Livingstone Creek
 - Livingstone Creek No. 2
 - Saturn
 - Saturn No. 2
 - Tower Lake
 - Tremblay No. 2
 - Tremblay No. 3
 - Tremblay Summary
 - Whitburn East
 - Worsley-McLennan System**
 - Grimshaw APWM
- Laterals Removed This Month:**
- Fourth Creek
 - Fourth Creek West
 - Whitburn East
 - North Montney Mainline
 - Aitken Creek South
 - Aitken Creek West No. 2
 - Altares
 - Altares South
 - Blair Creek
 - Gundy
 - Gundy West
 - Kobes
 - Mackie Creek North
 - Old Alaska
 - Townsend Summary
 - Progress Lateral
 - Progress
 - Progress East Lateral
 - Progress East



Approaching Contract Capacity*	Contracts are greater than 95% of the area or facility capability.
Fully Contracted**	Area is fully contracted. Firm Transfers allowed within restricted area as per the hydraulic evaluation. New requests for Firm Transportation service will be held pending availability of Area capacity. For additional information refer to the Informational Postings on Customer Express, Project Area Receipt and Delivery Capacity Update. Last Updated: February 3, 2025

Capacity within any portion of the NGTL System can become fully contracted at any time and without prior notice. NGTL encourages customers to review their future FT requirements to ensure their FT levels align with their expected flow requirements. New changes to the fully contracted stations list this month are identified in red.