



Monthly Outage Forecast

September 15, 2015

DISCLAIMER

This information is provided for informational purposes only and is not to be relied upon for any other purpose whatsoever. The information is based upon certain assumptions that may or may not be accurate, and therefore is subject to various risks and uncertainties. TransCanada shall not be liable for damages sustained as a result of any use or reliance on such information.

September Monthly Outage Forecast

The Monthly Outage Forecast is a tool provided by TransCanada to show the estimated operational capability of the System or area, and the estimated relative change in capability associated with planned outages.

In an ongoing effort to provide customers with updated information, TransCanada has made updates to the Monthly Outage Forecast capability charts. As a result, customers may see a difference in the reported capabilities and flows shown in some charts in this release of the Monthly Outage Forecast.

Please be advised of the following changes to onstream timing have been made and reflected in the receipt and delivery capability graphs for JAMES and OSDA:

Capability assuming existing pipeline MOP derates remain in effect.

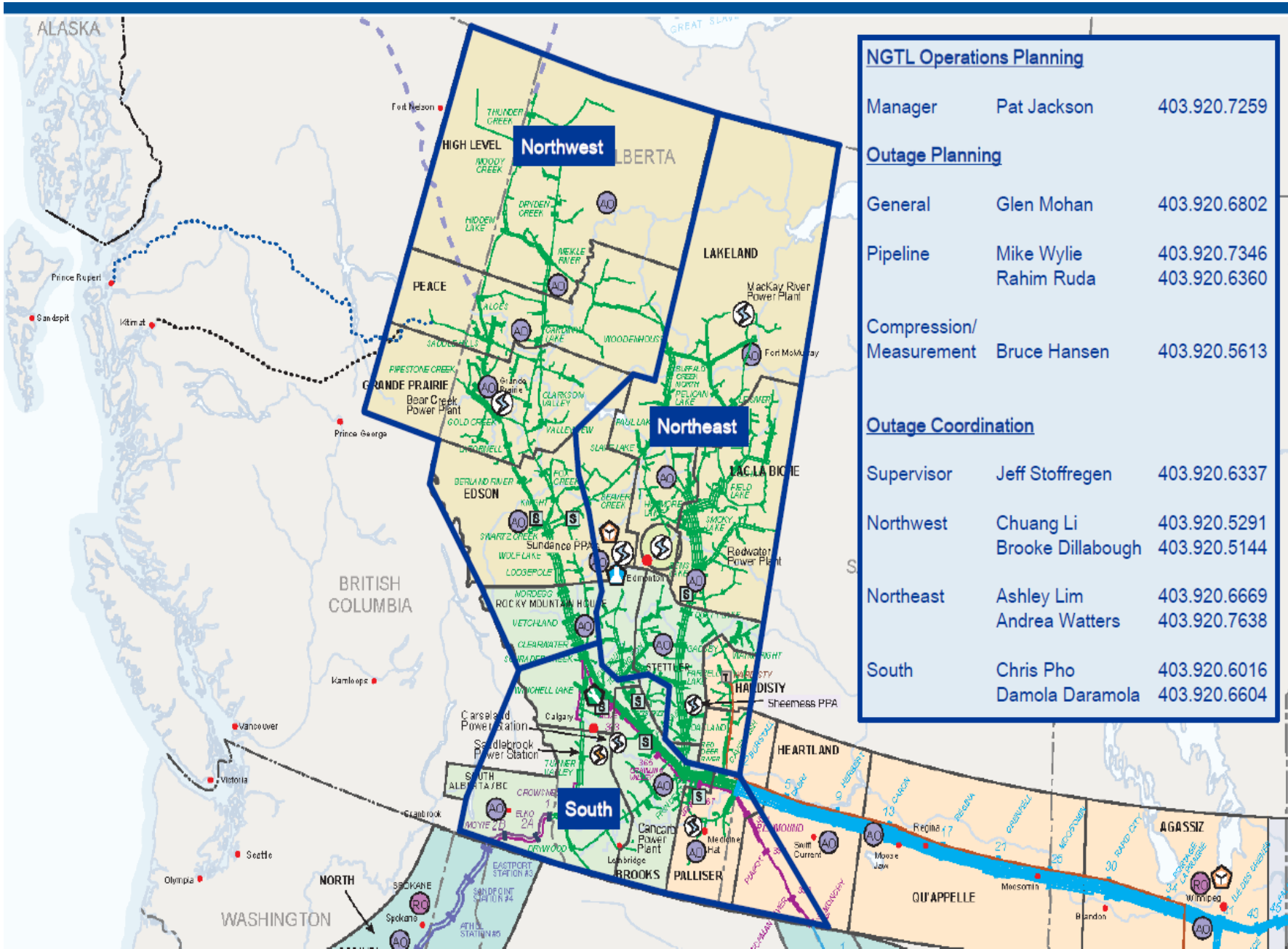
Capability assuming Saddle Hills and Alces B expansion facilities on-stream Nov 1, 2015.

Capability assuming Otter Lake expansion facilities on-stream Dec 15, 2015

Capability assuming Clearwater 1 return to service Nov 1, 2015

Capability assuming Clearwater 5 return to service Feb 2016

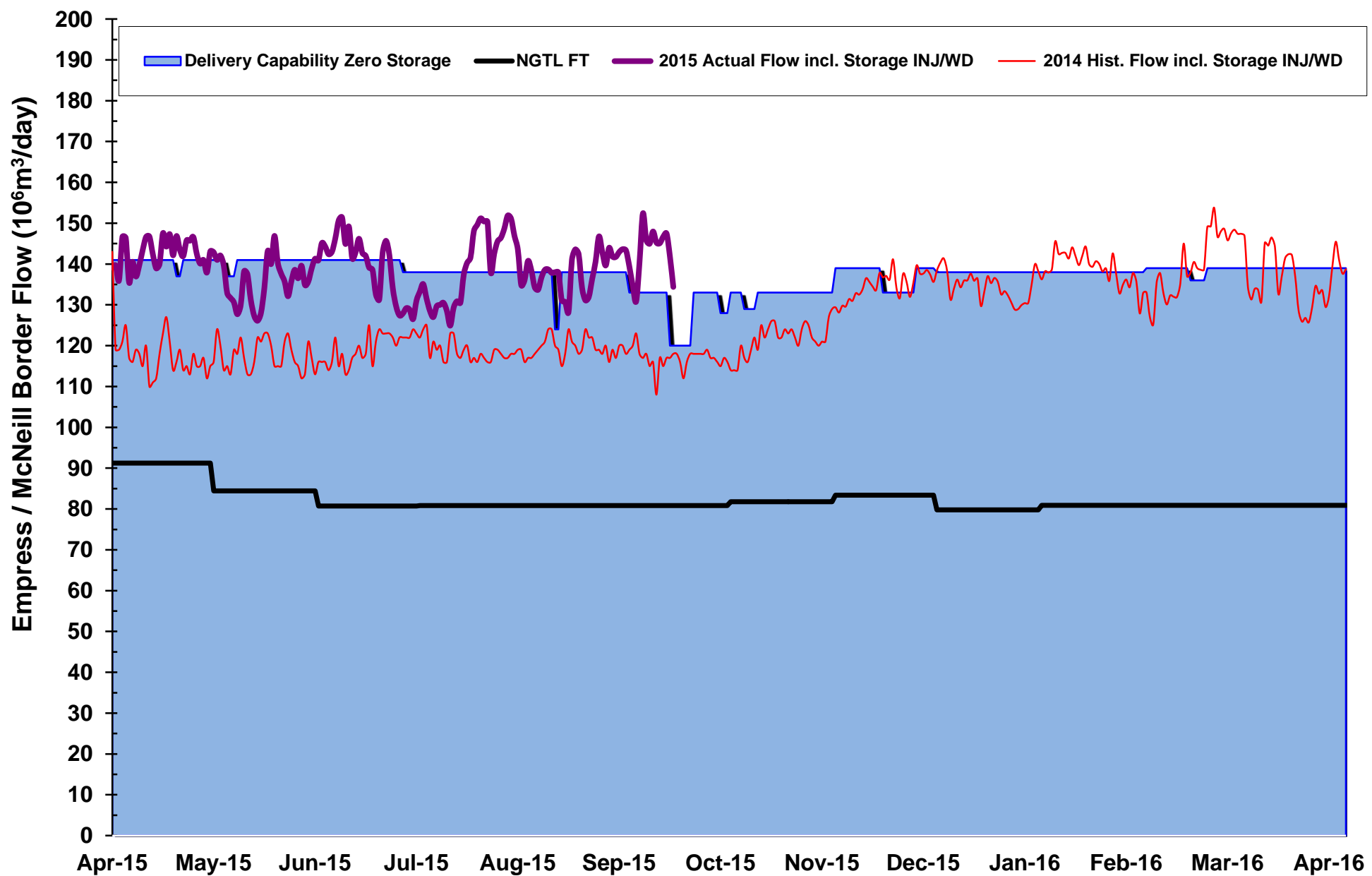
NGTL MAP



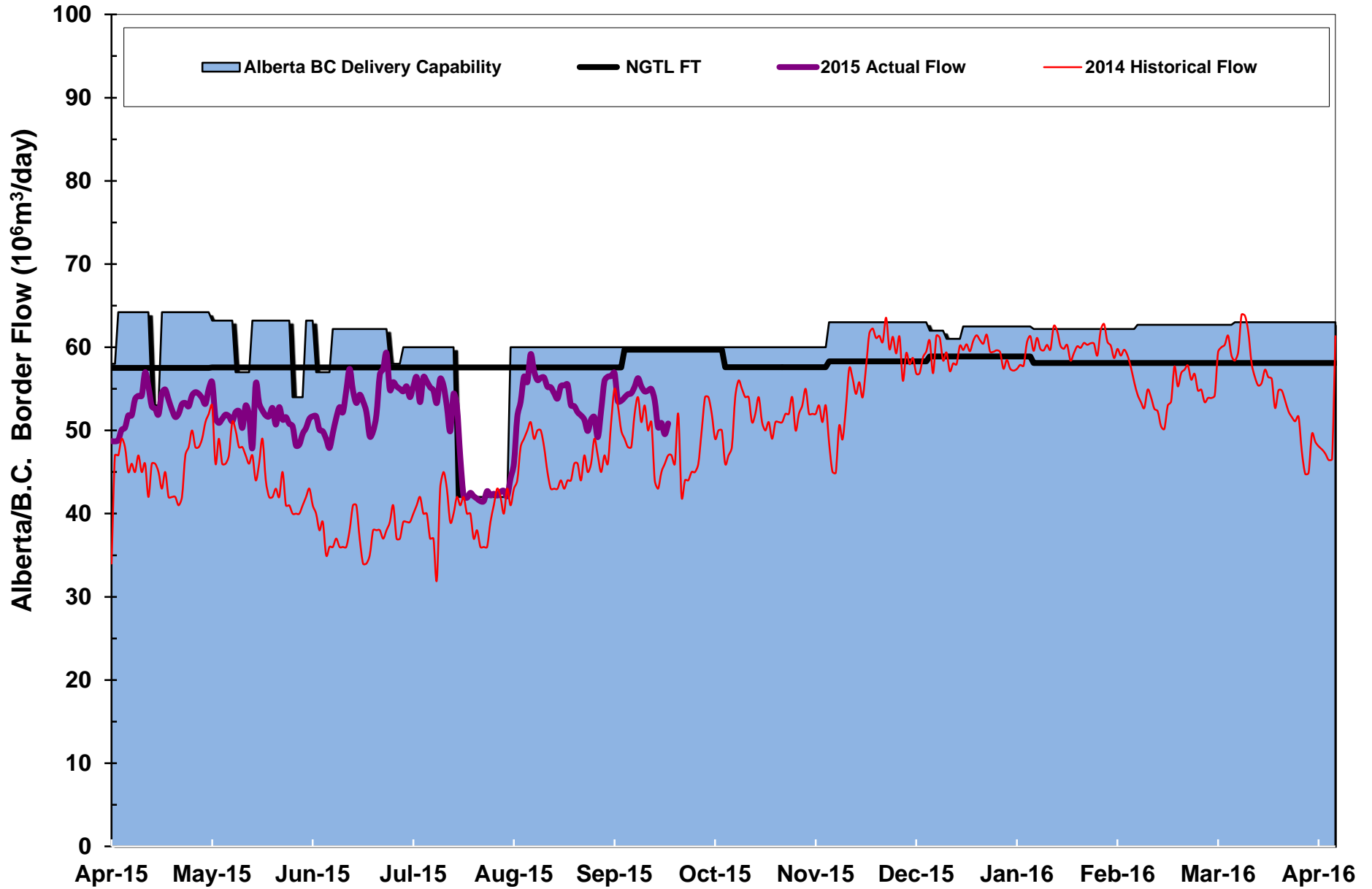
For NGTL System Facilities Segment codes please view link below

http://www.transcanada.com/customerexpress/docs/fh_system_maps/AB_System_Map_2015_Segments_Rev16.pdf

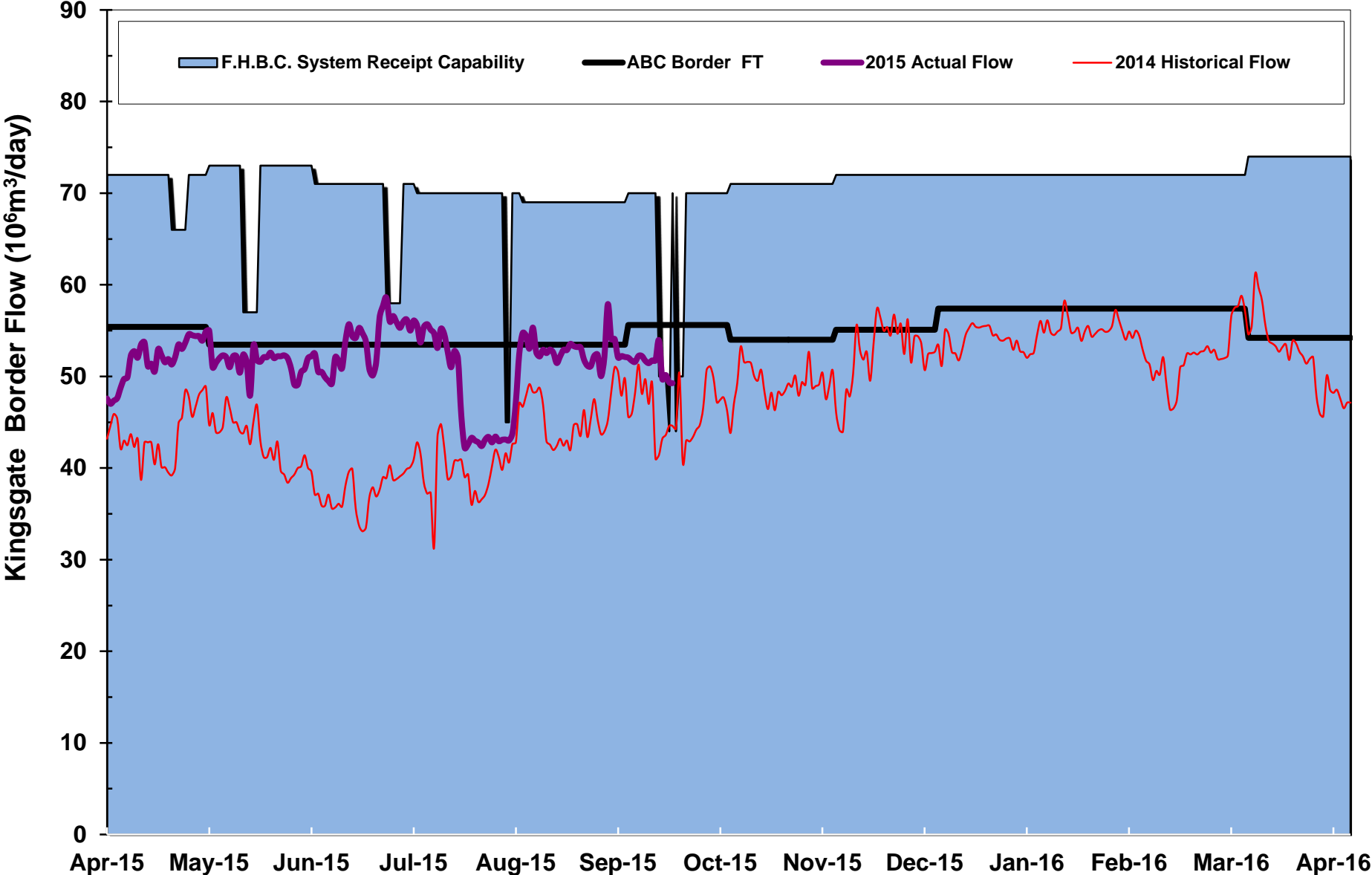
Empress/McNeill Border Outlook



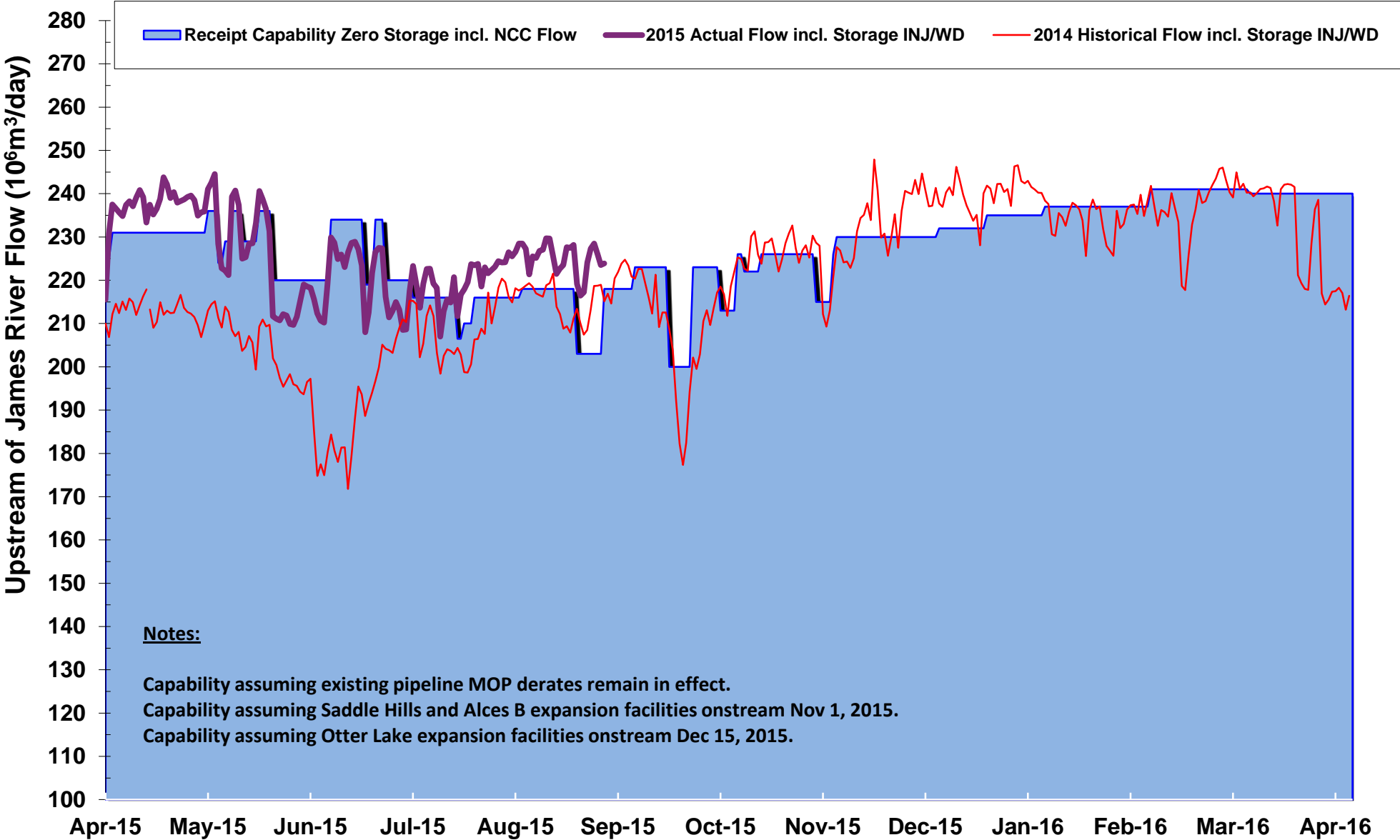
Alberta B.C. Border Outlook



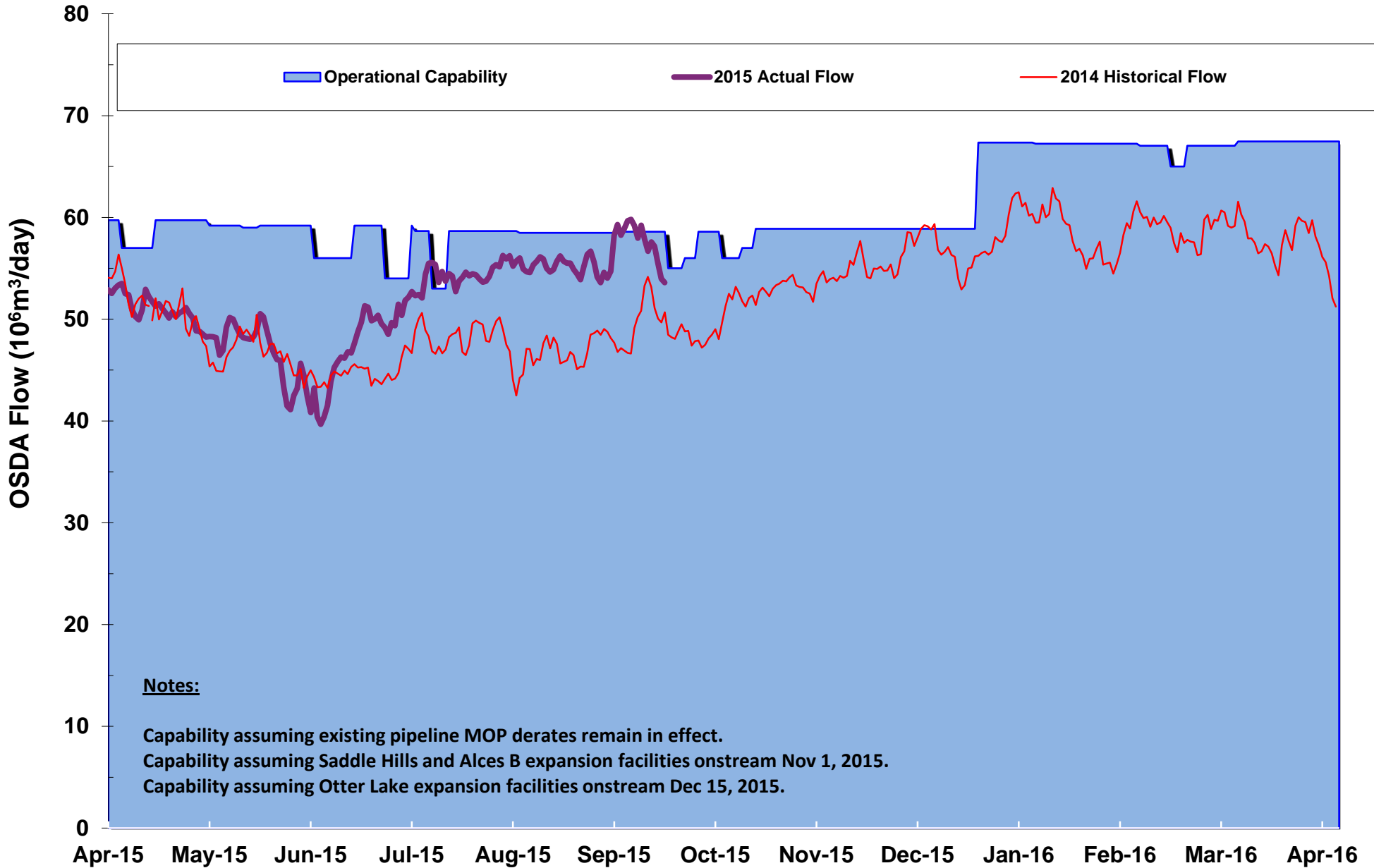
Kingsgate Border Outlook



Upstream of James River Outlook



Oil Sands Delivery Area (OSDA) Outlook Segments 10, 11,14



| | SE | OUTAGE DESCRIPTION | DATES | | RECEIPT/DELIVERY IMPACT | CONTACT | AREA |
|---|----|--|----------|----------|---|----------------|-------|
| | G | | START | FINISH | | | |
| | # | | | | | | |
| 1 | 12 | NPS 12 Flat Lake Lateral - Pipeline Maintenance (5 days). | 10/14/15 | 10/18/15 | Nil required at Flat Lake. Typical flow 120 E3m3/d. | Andrea Watters | Local |
| 2 | 20 | NPS 12 Alderson Lateral - Pipeline Maintenance (7 days). | 11/02/15 | 11/08/15 | Nil required at Alderson North, Bantry, Tilley and Tilley South #2 meter stations. Typical flow 900 E3m3/d. | Rahim Ruda | Local |
| 3 | 18 | NPS 42 Edson Mainline Loop - Pipeline Modifications (10 days within window). | 11/15/15 | 12/10/15 | Potential IT/FT delivery restriction at EGAT. Capability 133 E6, Typical flow 120-135 E6m3/d. | Rahim Ruda | EGAT |
| 4 | 4 | NPS 16 Gordondale Lateral - Pipeline Maintenance (7 days). New | 11/17/15 | 11/23/15 | Potential IT/FT receipt restriction required for Gordondale meter station. Capability 1600 E3m3/d. Typical flow 2000-6000 E3m3/d. | Chuang Li | Local |
| 5 | 8 | NPS 30 Edson Mainline - Pipeline Maintenance (4 days). New | 11/23/15 | 11/26/15 | Potential IT/FT receipt restriction required for Edson meter station. Capability 4500 E3m3/d. Typical flow 4000-6000 E3m3/d. Receipt restriction required for ATCO's Ansel meter station. Capability 1500 E3m3/d. Typical flow 1500-2500 E3m3/d. Potential IT/FT receipt restriction required for Dismal Creek meter station. Capability 800 E3m3/d. Typical flow 800-1200 E3m3/d. Potential IT/FT receipt restriction required for Ferrier North and Ferrier South B meter stations. Capability 1000 E3m3/d. Typical flow 1300-1800 E3m3/d | Chuang Li | Local |
| 6 | 1 | NPS 12 Paddle Prairie Lateral - Pipeline Maintenance (4 days). C8 | 11/24/15 | 11/27/15 | Nil required at Keg River East. Typical flow 35 E3m3/d. Potential IT/FT restriction required for Paddle Prairie, Paddle Prairie South, Boyer and Boyer East meter stations. Capability 0 to 400 E3m3/d. Typical flow 400 E3m3/d. | Rahim Ruda | Local |
| 7 | 21 | NPS 42 Western Alberta Mainline Loop - Pipeline Modifications (5 days within window). | 12/01/15 | 12/15/15 | Potential IT/FT delivery restriction at ALTBC. Capability 63 E6m3/d, Typical flow 55-60 E6m3/d. | Rahim Ruda | ALTBC |
| 8 | 21 | NPS 42 Western Alberta Mainline Loop - Pipeline Modifications (5 days within window). | 12/01/15 | 12/15/15 | Potential IT/FT delivery restriction at ALTBC. Capability 62 E6m3/d, Typical flow 55-60 E6m3/d. | Rahim Ruda | ALTBC |

| | SE G | | DATES | | | | |
|----|---------|--|----------|----------|---|-------------------|-------|
| | # | OUTAGE DESCRIPTION | START | FINISH | RECEIPT/DELIVERY IMPACT | CONTACT | AREA |
| 9 | 5 | NPS 36 Edson Mainline Extension - Pipeline Maintenance (5 days). Dates Revised | 12/04/15 | 12/08/15 | Potential IT/FT receipt restriction in Segments 1,2,3,4,5,7,8,9, 24, 26 and partial 28. ATCO's receipt meter stations in segment 7 are included. Chisholm Mills West (# 1609) in segment 24 and Crammond (# 1686) in segment 8 are excluded from restriction list. Segment 28 receipt meter station restriction list: Mystery Lake, Corbett South, Thunder B, Thunder Lake, Twin Lakes, Lunnford, Newton, Majeau Lake, Toad Lake and Noyes Crossing. Capability: 215 E6m3/d. Typical Flow: 215-230 E6m3/d | Brooke Dillabough | USJR |
| 10 | 11 | NPS 20 Kirby Lateral Loop - Pipeline Modifications (5 days within window). | 02/01/16 | 02/15/16 | Potential IT/FT delivery restriction in Segments 10, 11 & 14. Capability 65 E6m3/d. Typical flow 50 - 55 E6m3/d. | Rahim Ruda | OSDA |
| 11 | 5 | NPS 8 Simonette Lateral - Pipeline Modifications (4 days within window). | 02/01/16 | 02/15/16 | Nils required at Simonette, Simonette Sales, Deep Valley Creek Sales, Deep Valley Creek East and Maddenville. Typical flow 150 E3m3/d. | Ashley Lim | Local |
| 12 | 19 | NPS 48 EAS Mainline Loop #4 - Pipeline Modifications (5 days within window). | 02/14/16 | 02/28/16 | Potential IT/FT delivery restriction at EGAT. Capability 136 E6m3/d. | Rahim Ruda | EGAT |
| 13 | 10 | NPS 24 Fort McKay Mainline - Pipeline Maintenance (2 days within window). | 08/30/16 | 09/19/16 | IT/FT delivery restriction required for Aspen Sales, Wapasu Creek Sales, Kearsal Sales and Firebag Sales meter stations. Capability = 8300 E3m3/d. Typical flow 10000 to 12000 E3m3/d. | Andrea Watters | OSDA |
| 14 | 10 | NPS 30 Fort McKay Mainline - Pipeline Maintenance (2 days within window) | 08/30/16 | 09/19/16 | IT/FT delivery restriction required for Horizon Sales, Aurora Sales, Aurora # 2 Sales, Jackpine Creek Sales, Aspen Sales, Wapasu Creek Sales, Kearsal Sales and Firebag Sales meter stations. Capability = 13000 E3m3/d. Typical flow 15000 to 16000 E3m3/d. | Andrea Watters | OSDA |