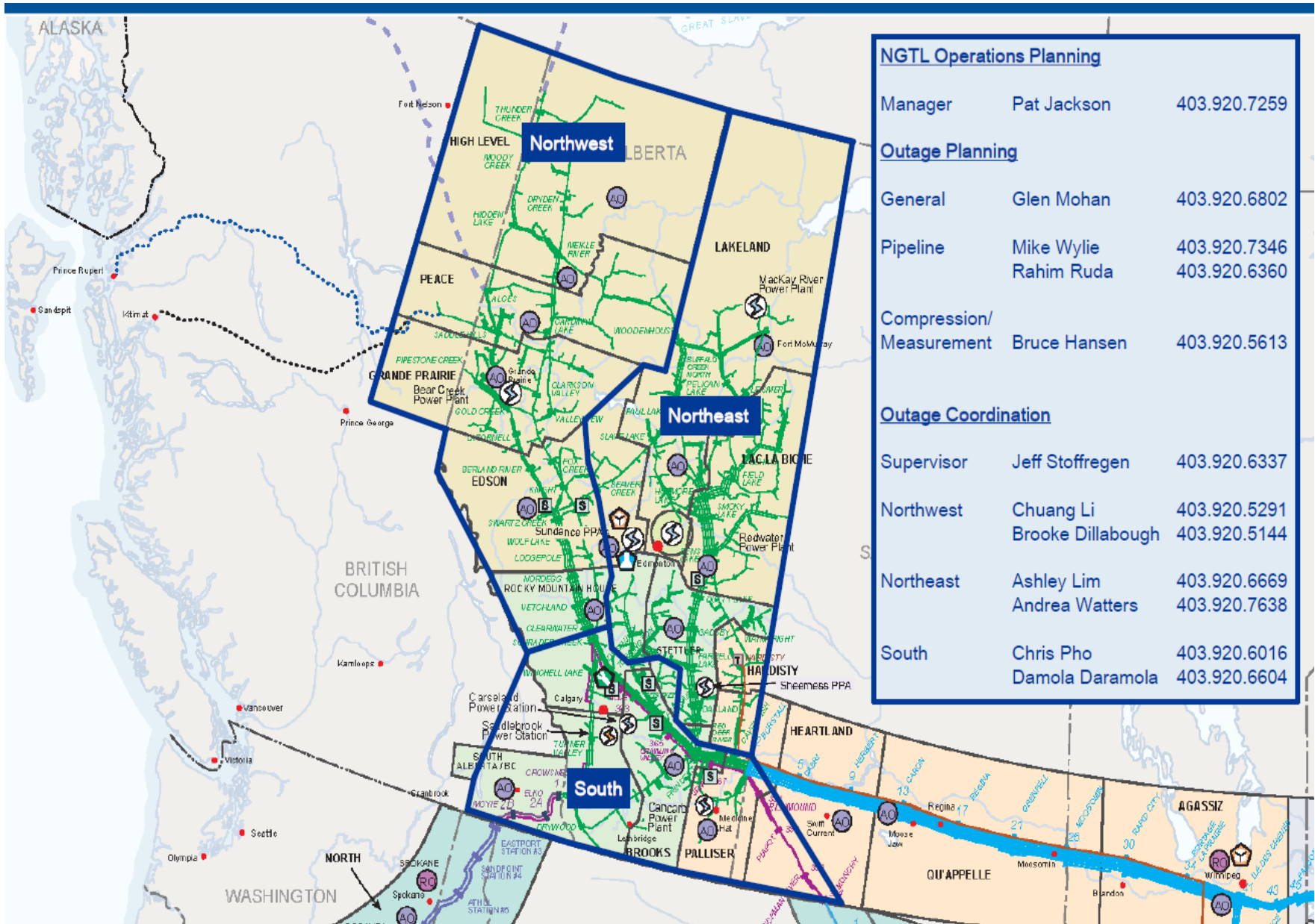




Monthly Outage Forecast June 2015





For NGTL System Facilities Segment codes please view link below

http://www.transcanada.com/customerexpress/docs/fh_system_maps/AB_System_Map_2015_Segments_Rev16.pdf

Printing Instructions for the MOF.XLS

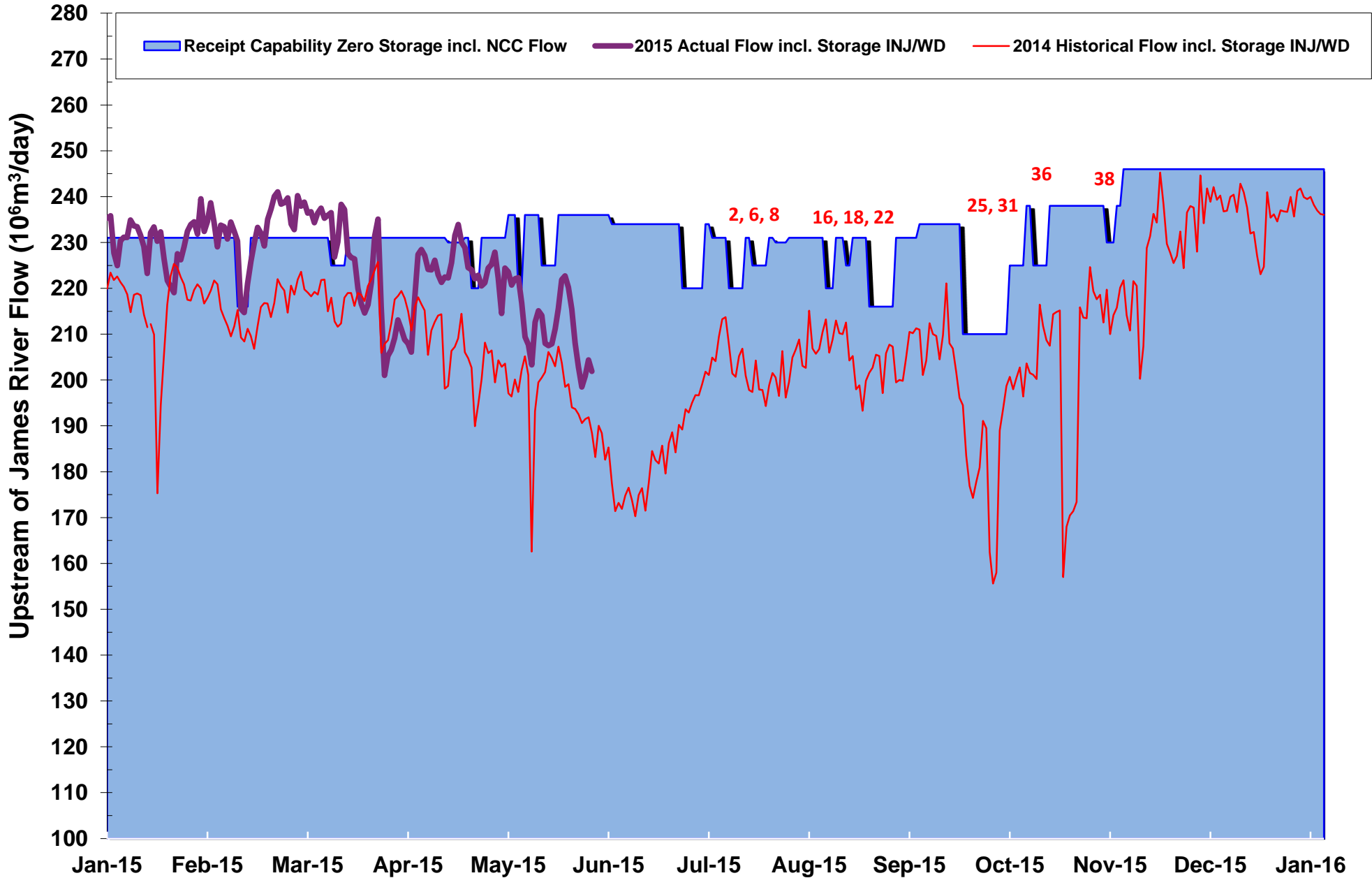
1. Select PRINT
2. Under Settings Select Print Active Sheets Box
3. Select Drop Down Arrow
4. Select Print Entire Workbook
4. Select Print

Please Note: Report may display three different files but they will all print together.

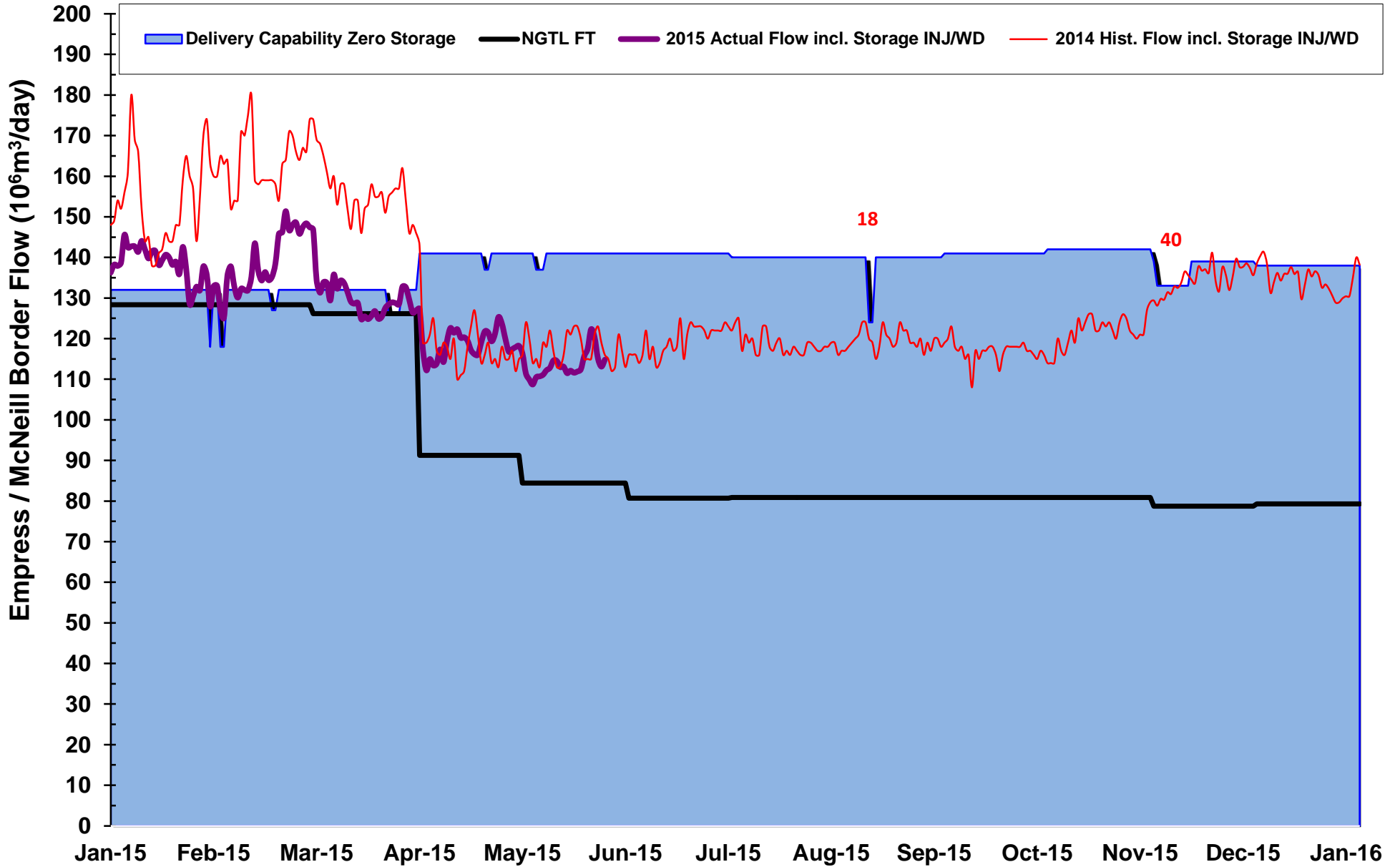
June Monthly Outage Forecast MOF

Is available in XLS Format and PDF Format.

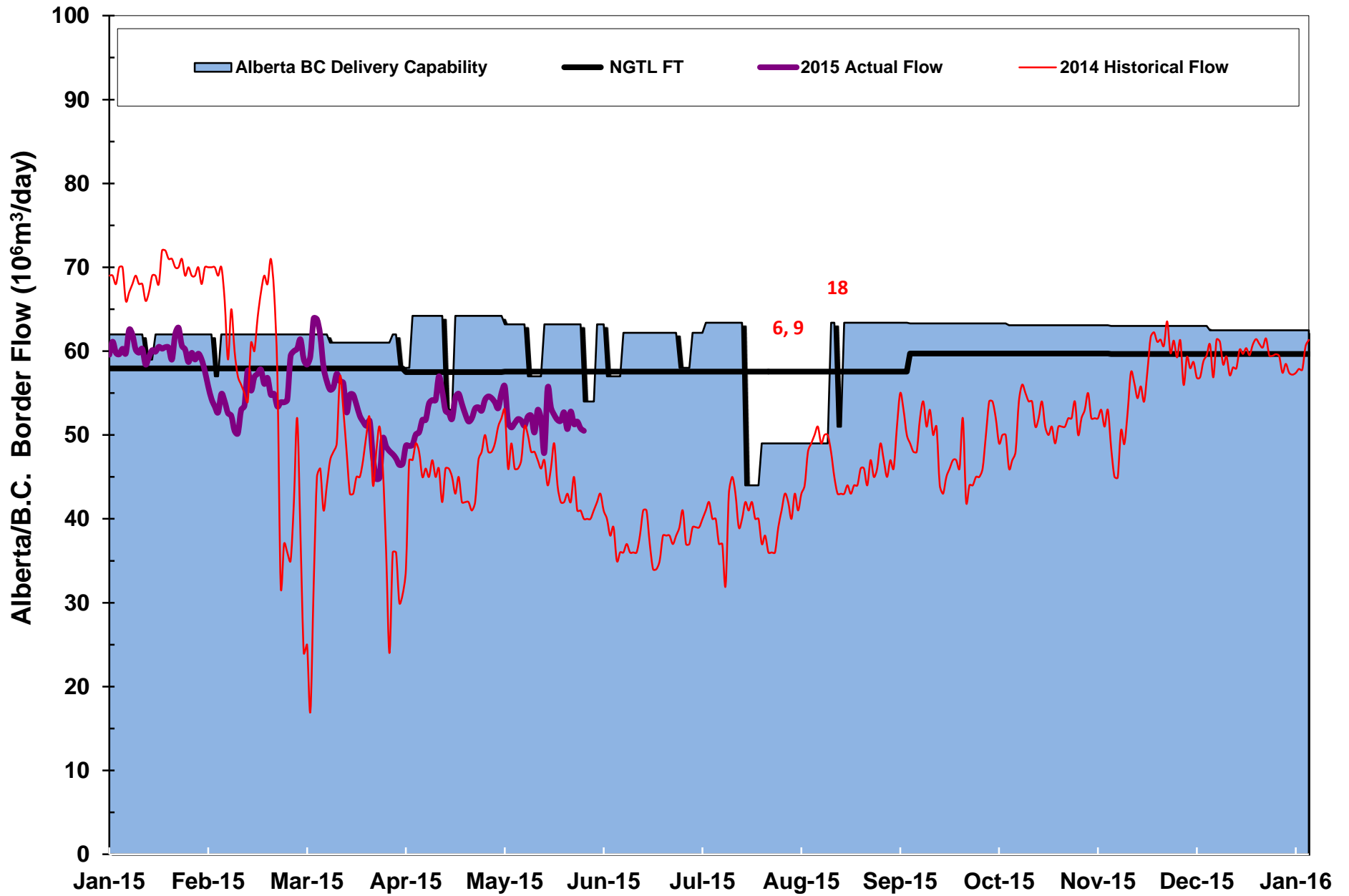
Upstream of James River Outlook



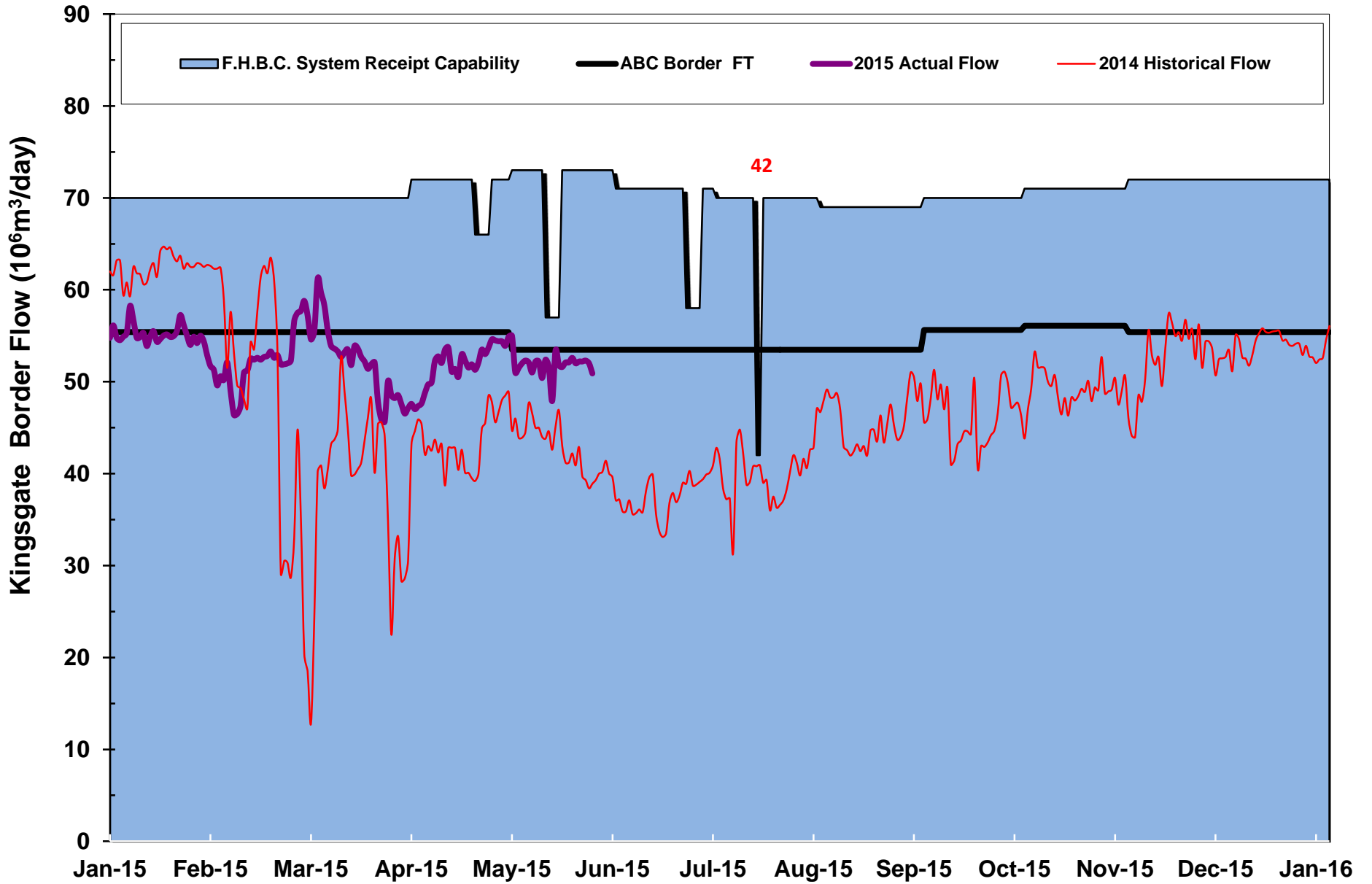
Empress/McNeill Border Outlook



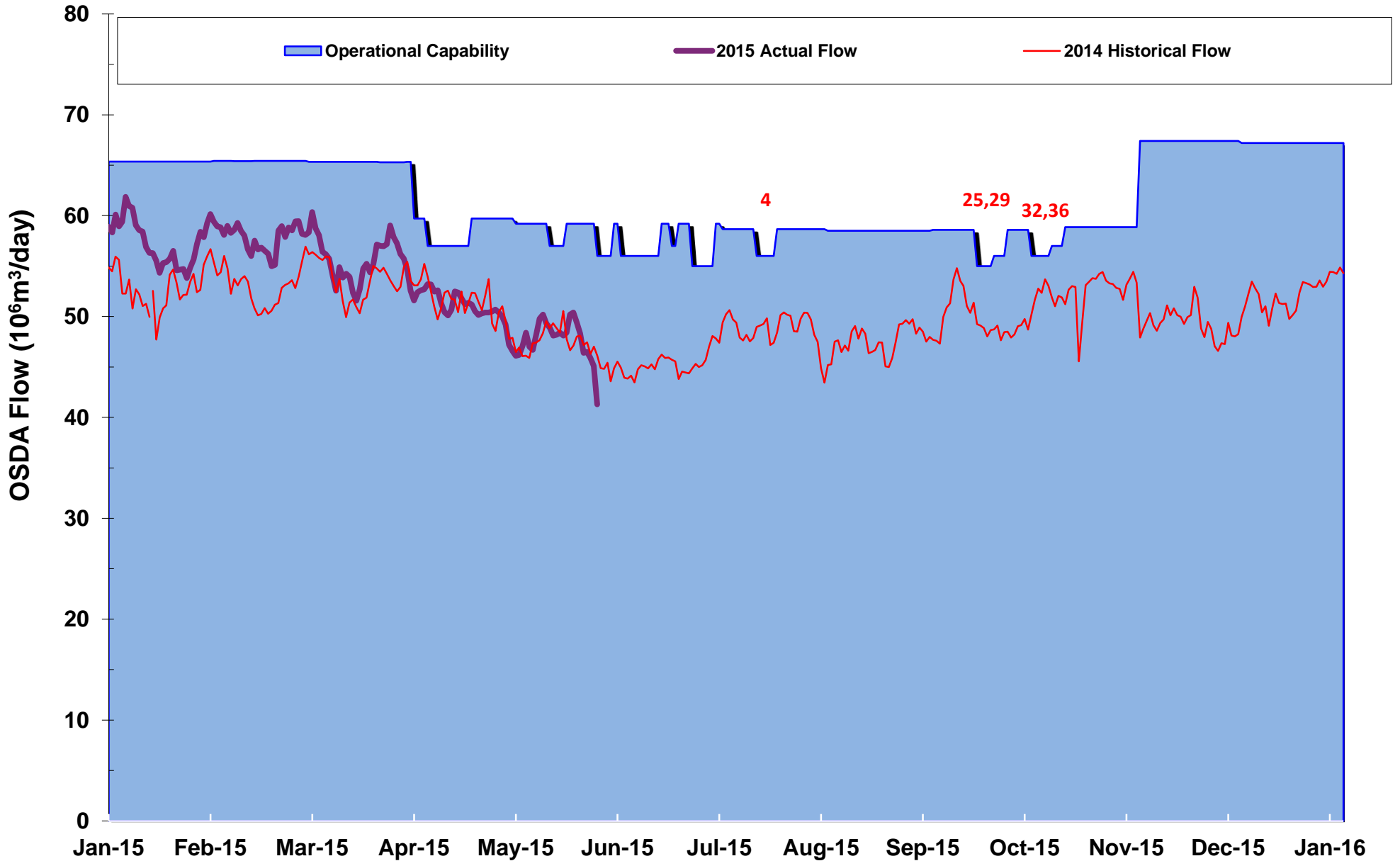
Alberta B.C. Border Outlook



Kingsgate Outlook



Oil Sands Delivery Area (OSDA) Outlook Segments 10,11,14



	SE		DATES				
	#	OUTAGE DESCRIPTION	START	FINISH	RECEIPT/DELIVERY IMPACT	CONTAC	AREA
1	14	NPS 10 Saddle Lake Lateral - Pipeline Modifications (5 days in window)	07/06/15	07/10/15	Nil required at St. Paul Sales meter station. Typical Flow 46 E3m3/d.	Andrea Watters	Local
2	8	Clearwater C/S - Station Maintenance (5 days).	07/06/15	07/10/15	Potential IT/FT receipt restriction Upstream of James River (including Ricinius West, Ricinius and Strachan). Capability 220 E6m3/d. Typical flow 210 - 240 E6m3/d.	Brooke Dillabough	USJR
3	18	NPS 4 Countess West Lateral - Pipeline Maintenance (5-6 days within window). Duration Revised.	07/06/15	07/13/15	Nil required at Countess West. Typical flow 85 E3m3/d.	Mike Wylie	Local
4	14	NPS 16 Saddle Lake Lateral Loop - Pipeline Modifications (6 days).	07/11/15	07/16/15	Potential IT/FT delivery restriction in Segments 10, 11 & 14. Capability: 56 E6m3/d. Typical Flow 50-55 E6m3/d.	Andrea Watters	OSDA
5	21	Crow A and B C/S - Station Maint. (2 days).	07/13/15	07/14/15	Potential IT/FT restriction on FHBC. Capability 42 E6m3/d. Typical flow 40 - 65 E6m3/d.	Damola Daramola	FHBC
6	21	NPS 36 Western Alberta System M/L - Pipeline Modifications (5 days).	07/13/15	07/17/15	Potential IT/FT receipt restriction Upstream of James River excluding Ricinius West, Ricinius and Strachan. Capability 225 E6m3/d. Typical flow 200 - 220 E6m3/d. Nil required at Jackson Creek M/S. Typical flow 600 E3m3/d Potential IT/FT delivery restriction at Alberta-Montana Border, Alberta-B.C. Border, Burnt Timber Sales, Caldwell Sales, Coleman #2 Sales, Coleman Sales, Crossfield Sales, East Calgary Sales, Garrington Sales, Lundbreck-Cowley Sales, Quirk Creek #2 Sales, Saratoga Sales, Sarcee Sales, Waterton #1 Sales meter stations. Capability 44 - 48 E6m3/d. Typical flow 45 - 55 E6m3/d.	Chris Pho	Local USJR ALTBC
7	21	NPS 6 Jackson Creek Lateral - Pipeline Maintenance (5 days).	07/13/15	07/17/15	Nil required at Jackson Creek. Typical flow 615 E3m3/d.	Chris Pho	Local
8	20	NPS 16 Alderson Lateral Extension - Pipeline Modifications (6 days within window)	07/15/15	07/31/15	Nil required at Princess West meter station. Typical flow 230 E3m3/d.	Damola Daramola	Local

C/S Compressor Station
M/S Meter Station
Shade - indicates new or changed
Inquiries? Contact info in outages above.

	SE		DATES				
	#	OUTAGE DESCRIPTION	START	FINISH	RECEIPT/DELIVERY IMPACT	CONTAC	AREA
9	21	NPS 36 Western Alberta System M/L - Pipeline Upgrades (21 days).	07/18/15	08/07/15	Potential IT/FT delivery restriction at Alberta-Montana Border, Alberta-B.C. Border, Burnt Timber Sales, Caldwell Sales, Coleman #2 Sales, Coleman Sales, Crossfield Sales, East Calgary Sales, Garrington Sales, Lundbreck-Cowley Sales, Quirk Creek #2 Sales, Saratoga Sales, Sarcee Sales, Waterton #1 Sales meter stations. Capability 49 E6m3/d. Typical flow 45 - 55 E6m3/d.	Chris Pho	Local ALTBC
10	8	NPS 18 Ferrier North Lateral - Pipe Maintenance (5 weeks). Dates Revised	07/20/15	08/24/15	Nil required at Ferrier South B and Ferrier North. Typical Flow 2500 E3m3/d	Mike Wylie	Local
11	22	NPS 12 Vulcan Lateral - Pipeline Modifications (5 days). Dates Revised	07/20/15	07/24/15	Nil required at Vulcan. Typical flow 10 E3m3/d.	Mike Wylie	Local
12	8	Clearwater Unit #1 C/S - Unit Maintenance (4 days).	07/20/15	07/23/15	Potential IT/FT receipt restriction Upstream of James River. Capability 230 E6m3/d. Typical flow 210 - 240 E6m3/d.	Brooke Dillabough	USJR
13	21	Burton Creek C/S - Station Maintenance (5 days) New	07/20/15	07/24/15	Potential IT/FT delivery restriction at ALTBC. Capability 56 E6m3/d, Typical flow 45-60 E6m3/d.	Damola Daramola	ALTBC
14	6	NPS 10 Cadotte River Lateral - Pipeline Modifications. (3 days within window). Dates Revised	08/01/15	09/15/15	Nil required at Cadotte River meter station. Typical flow 280 E3m3/d. Nils required at Cranberry Lake East Sales and Cranberry Lake East #2 Sales meter stations. Typical flow 30 E3m3/d.	Mike Wylie	Local
15	4	NPS 16 Gordondale Lateral - Pipeline Modifications (5 days within window).	08/01/15	08/30/15	Nil required at Howard Creek East, Silverwood, Teepee Creek, Webster, & Belloy West. Typical flow 175 - 200 E3m3/d.	Mike Wylie	Local
16	8	Vetchland C/S - Station Maintenance (3 days).	08/04/15	08/06/15	Potential IT/FT receipt restriction Upstream of James River (USJR) excluding Ricinius West, Ricinius and Strachan. Capability 220 E6m3/d. Typical flow 210 - 240 E6m3/d.	Brooke Dillabough	USJR
17	1	NPS 10 Paddle Prairie Lateral - Pipeline Maintenance (5 days).	08/06/15	08/10/15	Nil required at Paddle Prairie, Paddle Prairie South, Boyer and Boyer East meter stations. Typical flow 400 E3m3/d.	Brooke Dillabough	Local

C/S Compressor Station
M/S Meter Station
Shade - indicates new or changed
Inquiries? Contact info in outages above.

	SE	OUTAGE DESCRIPTION	DATES		RECEIPT/DELIVERY IMPACT	CONTAC	AREA
	#		START	FINISH			
18	8	Schrader Creek (East/West) C/S - Station Maintenance (2 days). New	08/10/15	08/11/15	Potential IT/FT delivery restriction at EGAT and ALTBC. Capability at ALTBC 51 E6m3/d, typical flow 40-60 E6m3/d. Capability at EGAT 124 E6m3/d, typical flow 90-130 E6m3/d. Potential IT/FT receipt restriction Upstream of James River (including Ricinius West, Ricinius and Strachan). Capability 225 E6m3/d. Typical flow 210 - 240 E6m3/d.	Damola Daramola	ALTBC EGAT USJR
19	8	NPS 8 Ferrier South Lateral - Pipeline Maintenance (5 days). Dates Revised	08/11/15	08/15/15	Nil required at Ferrier South B. Typical flow 270 - 400 E3m3/d.	Mike Wylie	Local
20	15	NPS 16 North Lateral Extension - Pipeline Maintenance (8 days) -	08/12/15	08/19/15	Potential IT/FT delivery restriction in Segments 10, 11 & 13-16 & 28. Potential nil required at Halkirk North #2, Halkirk, Maple Glen, Castor, Leo and Hanna meter stations. Capability: 80 E6m3/d. Typical Flow 75-85 E6m3/d.	Ashley Lim	Local
21	9	NPS 6 Ferrier Lateral - Pipeline Modifications (6 days within window). Dates Revised	08/15/15	09/15/15	Nils required at Ferrier, Ferrier South A and Codner meter stations. Typical flow 1000 E3m3/d.	Rahim Ruda	Local
22	8	Swartz Creek C/S - Station Maintenance (8 days).	08/17/15	08/24/15	Potential IT/FT receipt restriction Upstream of James River excluding Ricinius West, Ricinius and Strachan. Capability = 216 E6m3/d. Typical flow 210 - 240 E6m3/d.	Brooke Dillabough	USJR
23	23	NPS 6 Chauvin Lateral - Pipeline Maintenance (6 days).	08/20/15	08/25/15	Nil required at Estridge Lake and Chauvin meter stations. Typical flow 70 E3m3/d.	Rahim Ruda	Local
24	20	NPS 12 Alderson Lateral - Pipeline Modifications (5 days).	09/13/15	09/17/15	Nil required at Alderson, Alderson South, Alderson North, Bantry, Twelve Mile Coulee, Tilley and Tilley South 2 meter stations. Typical flow 1650 E3m3/d.	Rahim Ruda	Local
25	4	NPS 36 Northwest Mainline - Pipeline Modifications (5 days within window).	09/14/15	09/30/15	Potential IT/FT delivery restriction in Segments 10, 11 & 14. Capability 55 E6m3/d. Typical flow 50 - 55 E6m3/d. Potential IT/FT receipt restriction Upstream of James River excluding Ricinius West, Ricinius and Strachan. Capability 210 E6m3/d. Typical flow 210 - 240 E6m3/d.	Rahim Ruda	OSDA USJR
26	4	Saddle Hills C/S - Station Modifications (5 days within window).	09/14/15	09/30/15	Potential IT/FT receipt restriction in Segment 4. Capability 50 E6m3/d. Typical flow 50 - 60 E6m3/d.	Rahim Ruda	Local

C/S Compressor Station

M/S Meter Station

Shade - indicates new or changed

Inquiries? Contact info in outages above.

EGAT - Eastern Gate (Empress/McNeill Borders)

ALTBC - Alberta/B.C. Border

FSCD - Firm Service Contract Demand

	SE		DATES				
	#	OUTAGE DESCRIPTION	START	FINISH	RECEIPT/DELIVERY IMPACT	CONTAC	AREA
27	10	NPS 12 Moosa Lateral - Pipeline Modifications (10-14 days within window).	09/15/15	09/30/15	Nil required at Ruth Lake Sales #2 and Ruth Lake Sales #3 meter stations. Typical flow 1200 E3m3/d.	Rahim Ruda	Local
28	22	NPS 18 Castle River Montana Lateral Loop - Pipeline Modifications (4 days within window)	09/15/15	09/30/15	Potential IT/FT delivery restriction at Alberta Montana Border. Capability 2500 E3m3/d. Typical flow 1000 to 3000 E3m3/d.	Rahim Ruda	Local
29	11	NPS 20 Leming Lake Lateral Loop - Pipeline Maintenance (6 days).	09/16/15	09/20/15	Potential IT/FT delivery restriction in Segments 10, 11 & 14. Capability 55-57 E6m3/d. Typical flow 50 - 55 E6m3/d.	Andrea Watters	OSDA
30	7	NPS 30 Grande Prairie Mainline Loop - Pipeline Modifications (4 days within window).	09/21/15	10/15/15	Nil required at Progress East and Burnt River meter stations. Typical flow 400 E3m3/d.	Rahim Ruda	Local
31	7	Latornell C/S - Station Maintenance (5 days).	09/28/15	10/02/15	Potential IT/FT receipt restriction Upstream of James River excluding Ricinius West, Ricinius and Strachan. Capability 225 E6m3/d. Typical flow 210 - 240 E6m3/d.	Brooke Dillabough	USJR
32	6	Woodenhouse B C/S - Station Modifications (6 days). Dates Revised.	09/30/15	10/05/15	Potential IT/FT delivery restriction in Segments 10, 11 & 14. Capability: 56 E6m3/d. Typical Flow: 50-55 E6m3/d	Andrea Watters	OSDA
33	23	NPS 8 Wainwright East Lateral - Pipeline Maintenance (4 days within window). Dates Revised	10/01/15	11/30/15	Nil required at Wainwright East. Typical flow 40 E3m3/d.	Mike Wylie	Local
34	12	NPS 12 Flat Lake Lateral - Pipeline Maintenance (5 days within window). Dates Revised	10/01/15	11/30/15	Nil required at Flat Lake. Typical flow 120 E3m3/d.	Mike Wylie	Local
35	20	NPS 12 Alderson Lateral - Pipeline Maintenance (7 days).	10/02/15	10/08/15	Nil required at Alderson North, Bantry, Tilley and Tilley South #2 meter stations. Typical flow 900 E3m3/d.	Rahim Ruda	Local
36	3	Hidden Lake North C/S - Station Maintenance (5 days).	10/05/15	10/09/15	Potential IT/FT delivery restriction in Segments 10, 11 & 14. Capability 57 E6m3/d. Typical flow 50 - 55 E6m3/d. Potential IT/FT receipt restriction Upstream of James River excluding Ricinius West, Ricinius and Strachan. Capability 225 E6m3/d. Typical flow 210 - 240 E6m3/d	Brooke Dillabough	OSDA USJR

C/S Compressor Station
M/S Meter Station
Shade - indicates new or changed
Inquiries? Contact info in outages above.

	SE	OUTAGE DESCRIPTION	DATES		RECEIPT/DELIVERY IMPACT	CONTAC	AREA
	#		START	FINISH			
37	13	NPS 8 Big Bend Lateral - Pipeline Maintenance (3- 4 days).	10/07/15	10/12/15	Nil required at Big Bend meter station. Typical flow 130 E3m3/d.	Mike Wylie	Local
38	8	Clearwater Unit #5 - Unit Maintenance (3 days).	10/27/15	10/29/15	Potential IT/FT receipt restriction in Upstream of James River (USJR). Capability 230 E6m3/d. Typical flow 210 - 240 E6m3/d.	Brooke Dillabough	USJR
39	21	NPS 42 Western Alberta Mainline Loop - Pipeline Modifications (5 days within window).	11/01/15	11/15/15	Potential IT/FT delivery restriction at ALTBC. Capability 63 E6m3/d, Typical flow 45-55 E6m3/d.	Rahim Ruda	ALTBC
40	18	NPS 42 Edson Mainline Loop - Pipeline Modifications (10 days within window).	11/01/15	11/15/15	Potential IT/FT delivery restriction at EGAT. Capability 133 E6, Typical flow 120-135 E6m3/d.	Rahim Ruda	EGAT
41	1	NPS 12 Paddle Prairie Lateral - Pipeline Maintenance (4 days). C8	11/24/15	11/27/15	Nil required at Keg River East. Typical flow 35 E3m3/d. Potential IT/FT restriction required for Paddle Prairie, Paddle Prairie South, Boyer and Boyer East meter stations. Capability 0 to 400 E3m3/d. Typical flow 400 E3m3/d.	Rahim Ruda	Local
42	10	NPS 24 Fort McKay Mainline - Pipeline Maintenance (2 days within window) - New	12/01/15	12/31/15	IT/FT delivery restriction required for Aspen Sales, Wapasu Creek Sales, Kearl Sales and Firebag Sales meter stations. Capability = 6080 E3m3. Typical flow 8300 E3m3.	Andrea Watters	Local
43	10	NPS 30 Fort McKay Mainline - Pipeline Maintenance (2 days within window) - New	12/01/15	12/31/15	IT/FT delivery restriction required for Horizon Sales, Aurora Sales, Aurora # 2 Sales, Jackpine Creek Sales, Aspen Sales, Wapasu Creek Sales, Kearl Sales and Firebag Sales meter stations. Capability = 10,500 E3m3. Typical flow 13,000 E3m3.	Andrea Watters	Local
44	19	NPS 42 Foothills Pipeline Zone 9 - Pipeline Maintenance (7 days within window). Deferred to 2016.	2016	2016	Potential IT/FT restriction on FHSK. Capability 26-52 E6m3/d. Typical flow 40-45 E6m3/d.	Rahim Ruda	FHSK

C/S Compressor Station
M/S Meter Station
Shade - indicates new or changed
Inquiries? Contact info in outages above.