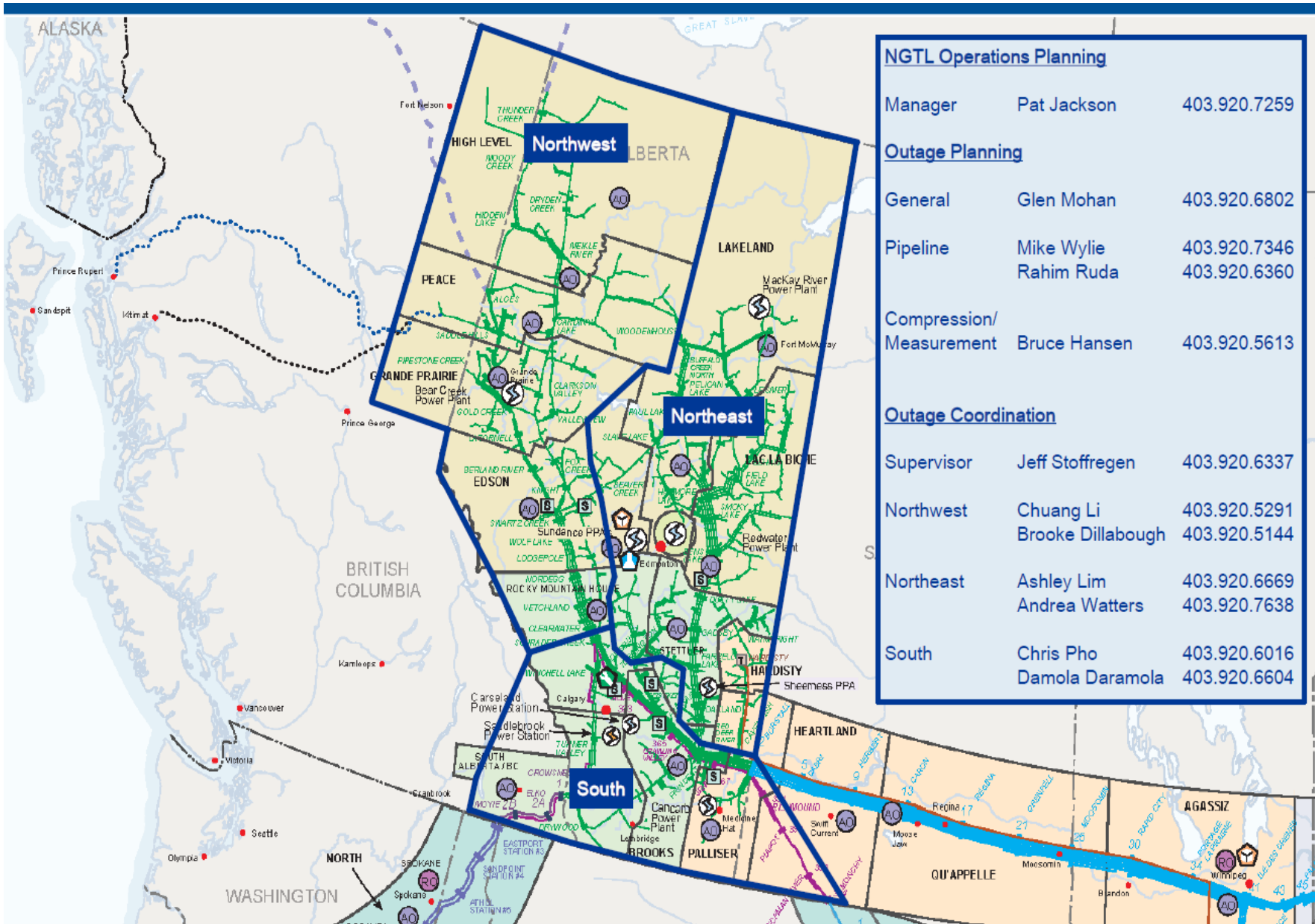




# Monthly Outage Forecast July 2015





NGTL Operations Planning		
Manager	Pat Jackson	403.920.7259
Outage Planning		
General	Glen Mohan	403.920.6802
Pipeline	Mike Wylie Rahim Ruda	403.920.7346 403.920.6360
Compression/ Measurement	Bruce Hansen	403.920.5613
Outage Coordination		
Supervisor	Jeff Stoffregen	403.920.6337
Northwest	Chuang Li Brooke Dillabough	403.920.5291 403.920.5144
Northeast	Ashley Lim Andrea Watters	403.920.6669 403.920.7638
South	Chris Pho Damola Daramola	403.920.6016 403.920.6604

**For NGTL System Facilities Segment codes please view link below**

[http://www.transcanada.com/customerexpress/docs/fh\\_system\\_maps/AB\\_System\\_Map\\_2015\\_Segments\\_Rev16.pdf](http://www.transcanada.com/customerexpress/docs/fh_system_maps/AB_System_Map_2015_Segments_Rev16.pdf)

## **Printing Instructions for the MOF.XLS**

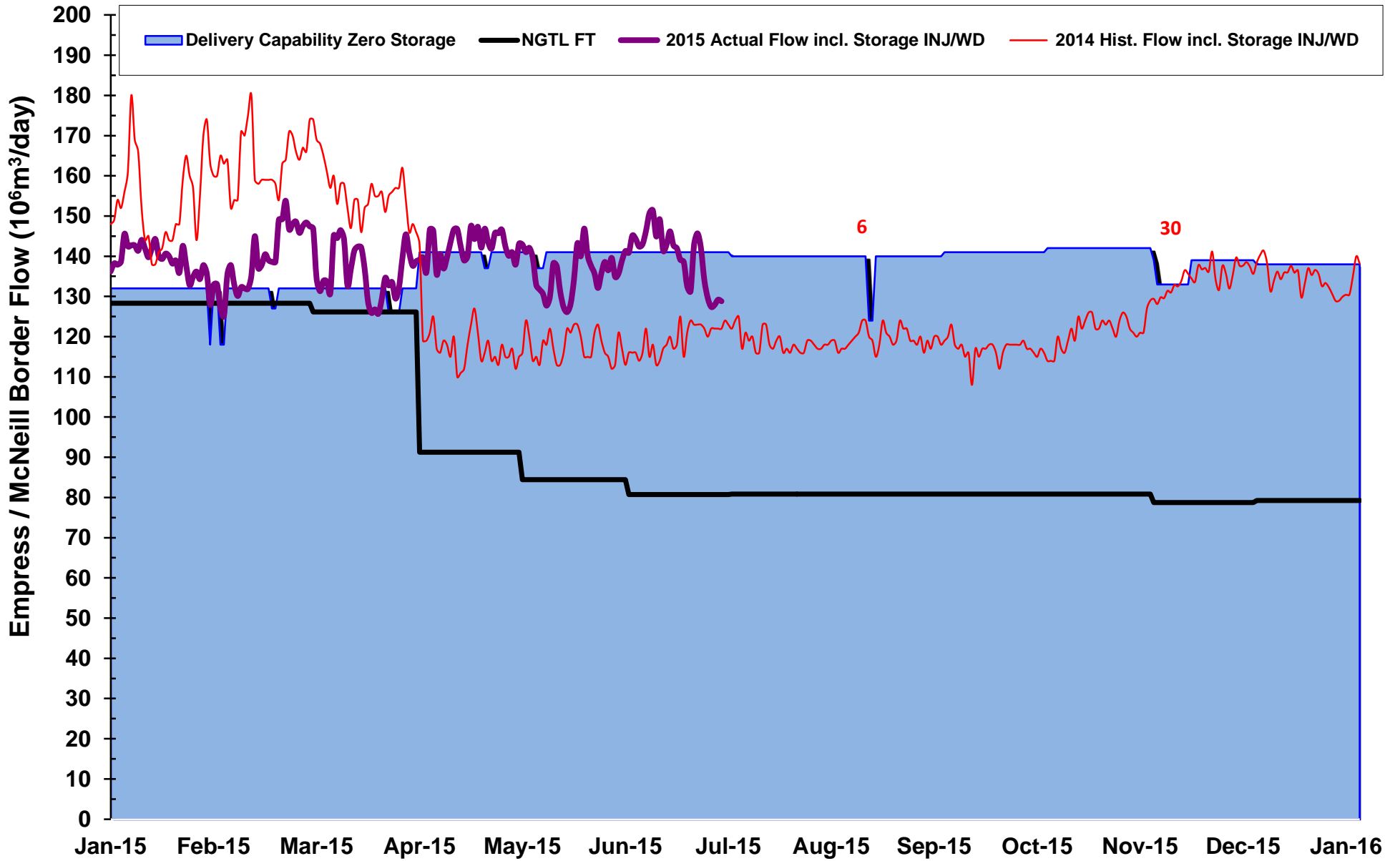
1. Select PRINT
2. Under Settings Select Print Active Sheets Box
3. Select Drop Down Arrow
4. Select Print Entire Workbook
4. Select Print

Please Note: Report may display three different files but they will all print together.

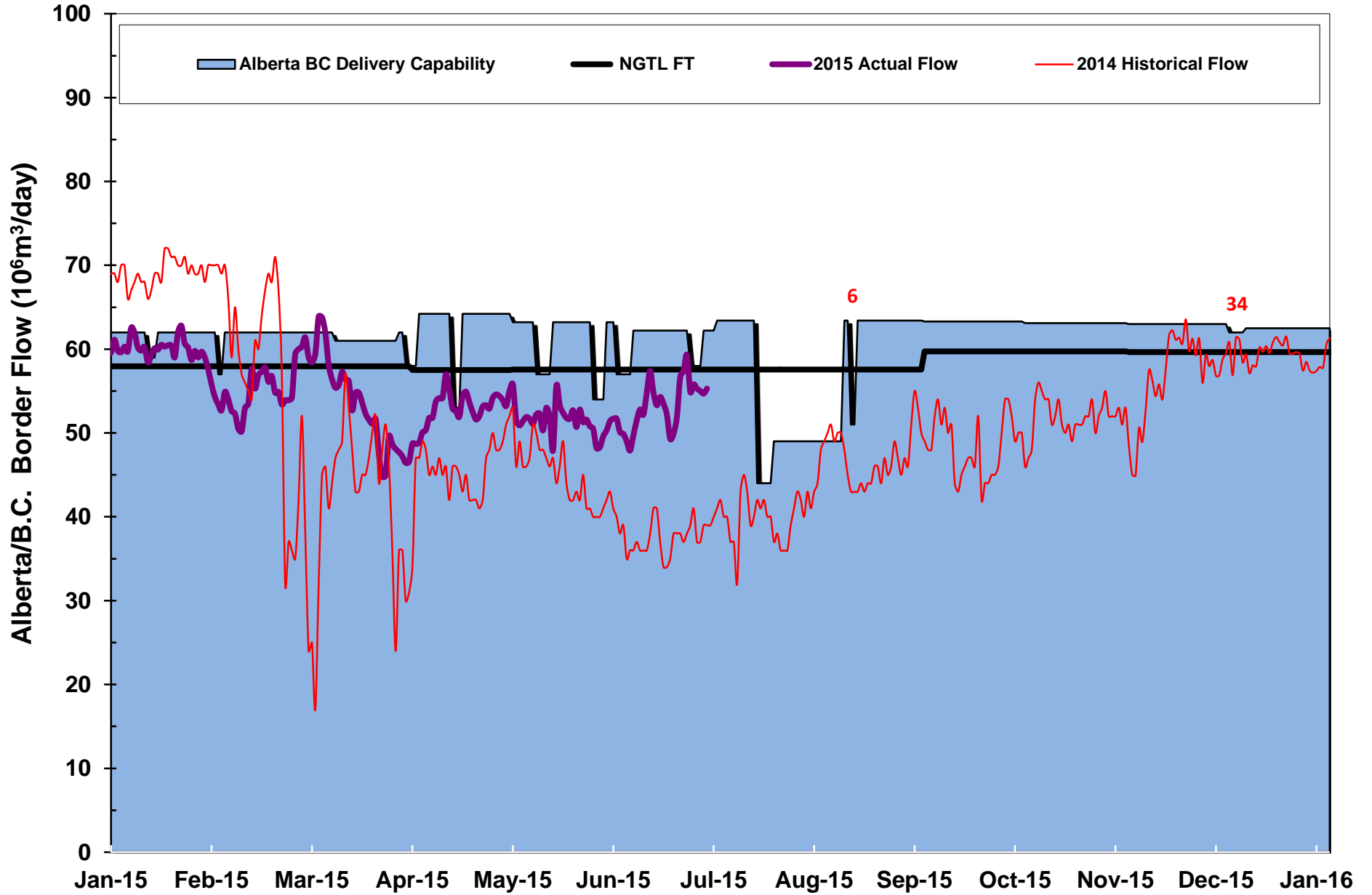
## **July Monthly Outage Forecast MOF**

Is available in XLS Format and PDF Format.

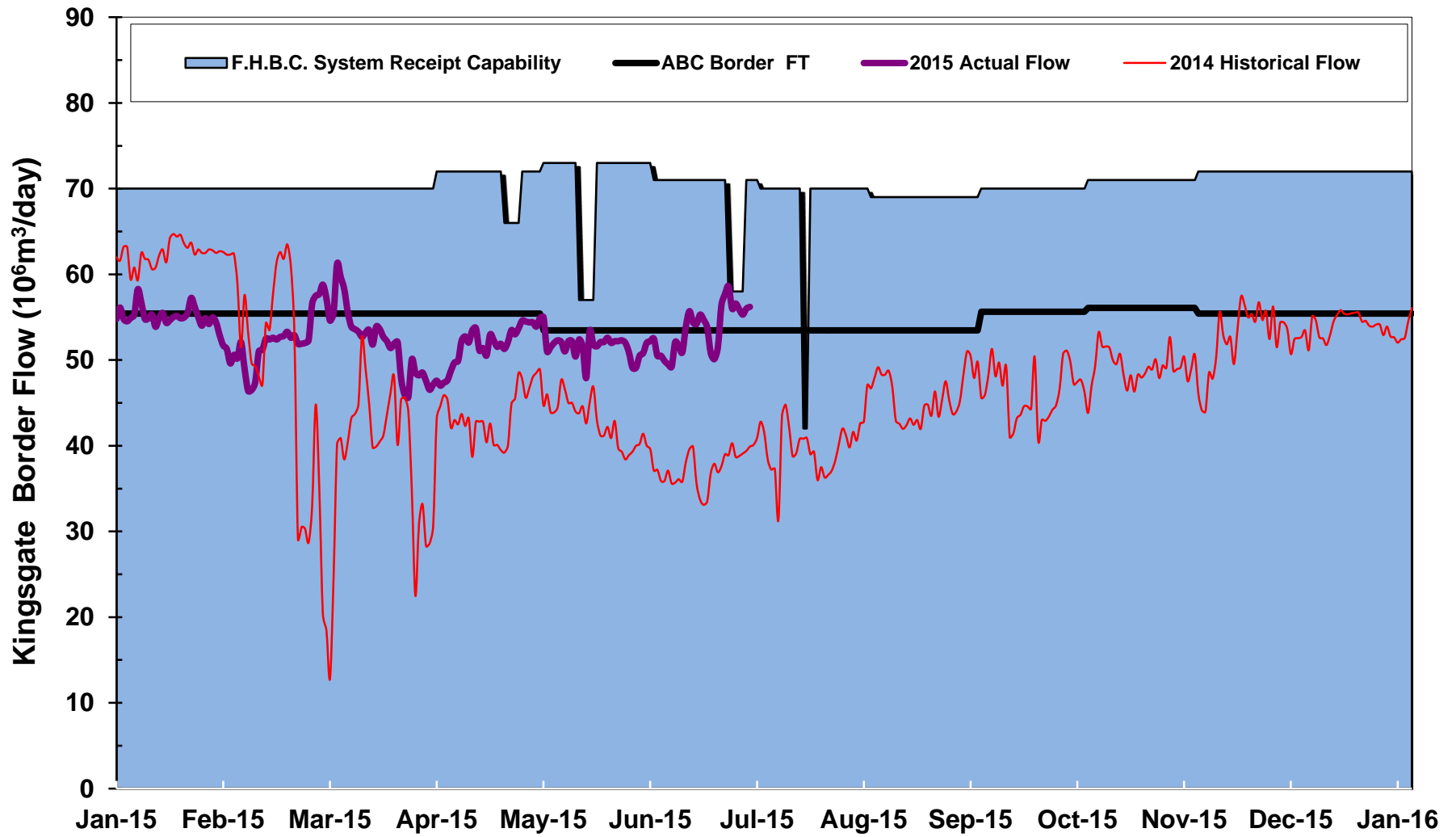
# Empress/McNeill Border Outlook



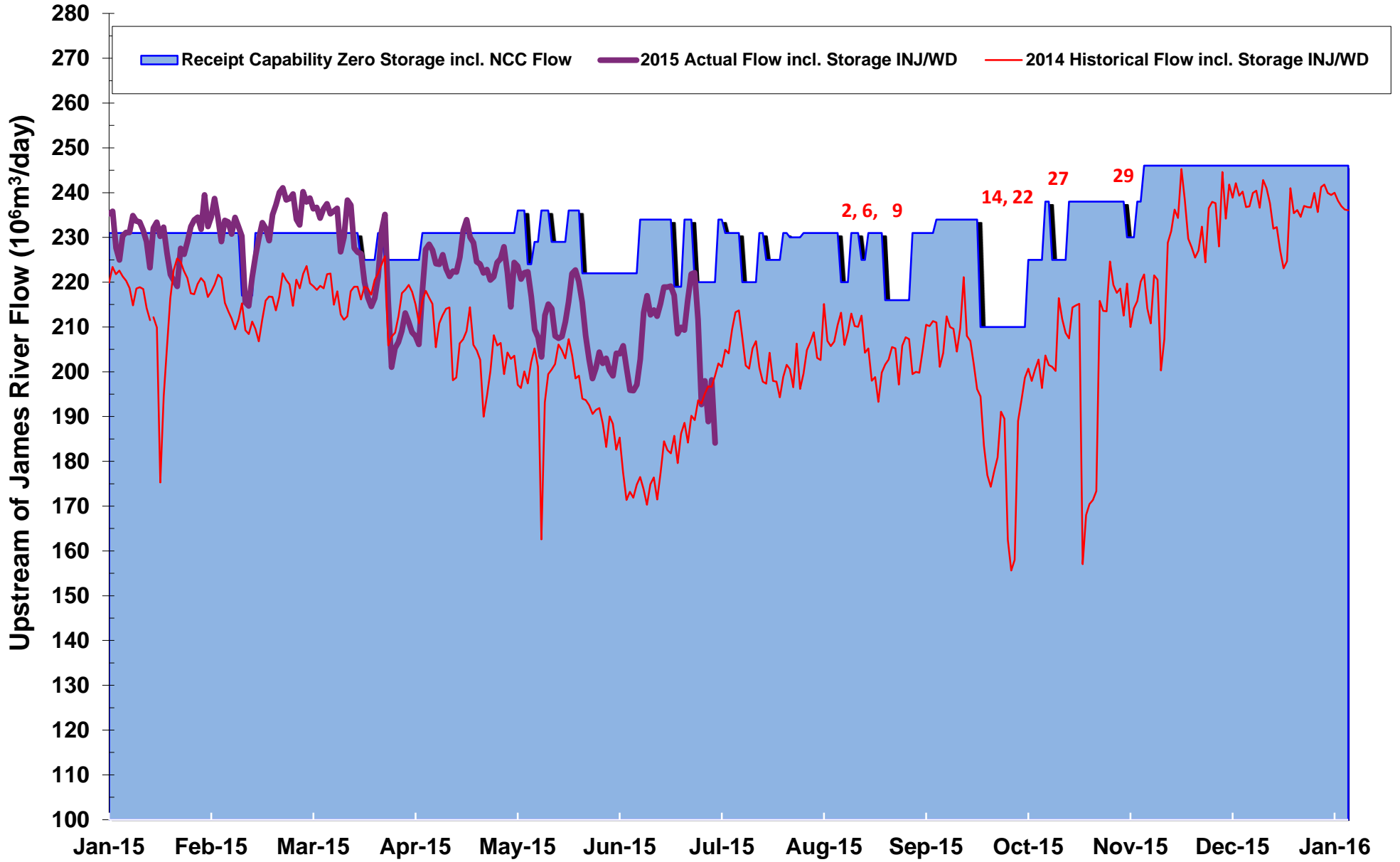
# Alberta B.C. Border Outlook



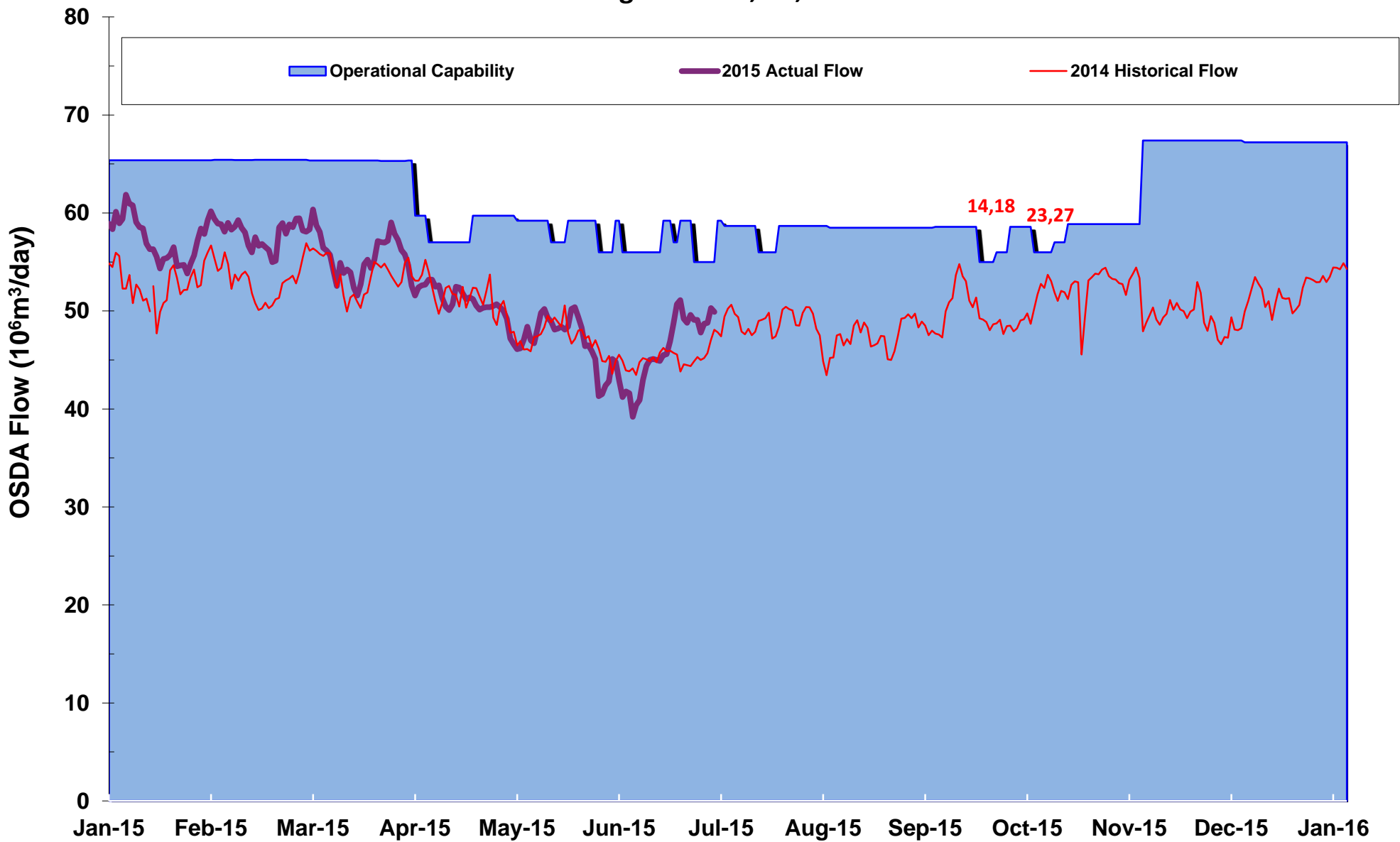
# Kingsgate Border Outlook



# Upstream of James River Outlook



# Oil Sands Delivery Area (OSDA) Outlook Segments 10, 11,14





	SE		DATES				
	#	OUTAGE DESCRIPTION	START	FINISH	RECEIPT/DELIVERY IMPACT	CONTACT	AREA
1	6	<b>NPS 10 Cadotte River Lateral</b> - Pipeline Modifications. (3 days within window). <b>Dates Revised</b>	07/15/15	08/15/15	Nil required at Cadotte River meter station. Typical flow 280 E3m3/d. Nils required at Cranberry Lake East Sales and Cranberry Lake East #2 Sales meter stations. Typical flow 30 E3m3/d.	Mike Wylie	Local
2	8	<b>Vetchland C/S</b> - Station Maintenance (3 days).	08/04/15	08/06/15	Potential IT/FT receipt restriction Upstream of James River (USJR) excluding Ricinius West, Ricinius and Strachan. Capability 220 E6m3/d. Typical flow 210 - 240 E6m3/d.	Brooke Dillabough	USJR
3	1	<b>NPS 10 Paddle Prairie Lateral</b> - Pipeline Maintenance (5 days).	08/06/15	08/10/15	Nil required at Paddle Prairie, Paddle Prairie South, Boyer and Boyer East meter stations. Typical flow 400 E3m3/d.	Brooke Dillabough	Local
4	20	<b>NPS 16 Alderson Lateral Extension</b> - Pipeline Modifications (6 days within window). <b>Dates Revised</b>	08/06/15	08/11/15	Nil required at Princess West meter station. Typical flow 230 E3m3/d.	Damola Daramola	Local
5	4	<b>NPS 16 Gordondale Lateral</b> - Pipeline Modifications (7 days within window). <b>Dates Revised</b>	08/10/15	08/21/15	Nil required at Howard Creek East, Silverwood, Teepee Creek, Webster, & Belloy West. Typical flow 175 - 200 E3m3/d.	Mike Wylie	Local
6	8	<b>Schrader Creek (East/West) C/S</b> - Station Maintenance (2 days).	08/10/15	08/11/15	Potential IT/FT delivery restriction at EGAT and ALTBC. Capability at ALTBC 51 E6m3/d, typical flow 40-60 E6m3/d. Capability at EGAT 124 E6m3/d, typical flow 90-130 E6m3/d. Potential IT/FT receipt restriction Upstream of James River (including Ricinius West, Ricinius and Strachan). Capability 225 E6m3/d. Typical flow 210 - 240 E6m3/d.	Damola Daramola	ALTBC EGAT USJR
7	5	<b>NPS 20 Kaybob Lateral</b> - Pipeline Maintenance (4 days). <b>New</b>	08/11/15	08/14/15	Nils required for Clark Lake, Kaybob, Two Creeks, Two Creeks East and Chickadee Creek West, Raspberry Lake meter stations. Typical flow 600 to 1500 E3m3.	Rahim Ruda	Local
8	22	<b>NPS 12 Vulcan Lateral</b> - Pipeline Modifications (5 days). <b>Dates Revised</b>	08/11/15	08/15/15	Nil required at Vulcan. Typical flow 0-10 E3m3/d.	Mike Wylie	Local
9	8	<b>Swartz Creek C/S</b> - Station Maintenance (8 days).	08/17/15	08/24/15	Potential IT/FT receipt restriction Upstream of James River excluding Ricinius West, Ricinius and Strachan. Capability = 216 E6m3/d. Typical flow 210 - 240 E6m3/d.	Brooke Dillabough	USJR
10	15	<b>NPS 16 North Lateral Extension</b> - Pipeline Maintenance (8 days) <b>Dates and Impact Revised.</b>	08/19/15	08/25/15	Potential IT/FT delivery restriction in Segments 10, 11 & 13-16 & 28. Capability: 80 E6m3/d. Typical Flow 75-85 E6m3/d.	Ashley Lim	Local

	SE		DATES				
	#	OUTAGE DESCRIPTION	START	FINISH	RECEIPT/DELIVERY IMPACT	CONTACT	AREA
11	8	<b>NPS 8 Ferrier South Lateral</b> - Pipeline Maintenance (5 days). <b>Dates Revised</b>	08/22/15	08/26/15	Nil required at Ferrier South B. Typical flow 270 - 400 E3m3/d.	Mike Wylie	Local
12	9	<b>NPS 6 Ferrier Lateral</b> - Pipeline Modifications (6 days within window). <b>Dates Revised</b>	08/25/15	09/11/15	Nils required at Ferrier, Ferrier South A and Codner meter stations. Typical flow 1000 E3m3/d.	Rahim Ruda	Local
13	20	<b>NPS 12 Alderson Lateral</b> - Pipeline Modifications (5 days).	09/13/15	09/17/15	Nil required at Alderson, Alderson South, Alderson North, Bantry, Twelve Mile Coulee, Tilley and Tilley South 2 meter stations. Typical flow 1650 E3m3/d.	Damola Daramola	Local
14	4	<b>NPS 36 Northwest Mainline</b> - Pipeline Modifications (5 days within window).	09/14/15	09/30/15	Potential IT/FT delivery restriction in Segments 10, 11 & 14. Capability 55 E6m3/d. Typical flow 50 - 55 E6m3/d. Potential IT/FT receipt restriction Upstream of James River excluding Ricinius West, Ricinius and Strachan. Capability 210 E6m3/d. Typical flow 210 - 240 E6m3/d.	Rahim Ruda	OSDA USJR
15	4	<b>Saddle Hills C/S</b> - Station Modifications (5 days within window).	09/14/15	09/30/15	Potential IT/FT receipt restriction in Segment 4. Capability 50 E6m3/d. Typical flow 50 - 60 E6m3/d.	Rahim Ruda	Local
16	10	<b>NPS 12 Moosa Lateral</b> - Pipeline Modifications (10-14 days within window).	09/15/15	09/30/15	Nil required at Ruth Lake Sales #2 and Ruth Lake Sales #3 meter stations. Typical flow 1200 E3m3/d.	Andrea Watters	Local
17	22	<b>NPS 18 Castle River Montana Lateral Loop</b> - Pipeline Modifications (4 days within window)	09/15/15	09/30/15	Potential IT/FT delivery restriction at Alberta Montana Border. Capability 2500 E3m3/d. Typical flow 1000 to 3000 E3m3/d.	Rahim Ruda	Local
18	11	<b>NPS 20 Leming Lake Lateral Loop</b> - Pipeline Maintenance (6 days).	09/16/15	09/20/15	Potential IT/FT delivery restriction in Segments 10, 11 & 14. Capability 55-57 E6m3/d. Typical flow 50 - 55 E6m3/d.	Andrea Watters	OSDA
19	7	<b>NPS 30 Grande Prairie Mainline Loop</b> - Pipeline Modifications (4 days within window).	09/21/15	10/15/15	Nil required at Progress East and Burnt River meter stations. Typical flow 400 E3m3/d.	Rahim Ruda	Local
20	6	<b>NPS 8 Mitsue Lateral</b> - Pipeline Maintenance (6 days). <b>New</b>	09/22/15	09/27/15	Nil required for Nipisi. Typical flow 50 E3m3/d.	Mike Wylie	Local

	SE		DATES				
	#	OUTAGE DESCRIPTION	START	FINISH	RECEIPT/DELIVERY IMPACT	CONTACT	AREA
21	6	<b>NPS 8 Mitsue Lateral</b> - Pipeline Maintenance (3 days). <b>New</b>	09/25/15	09/27/15	Nil required for Overlea, Otauwau Sales, & Sauteaux Sales. Typical flow 25 E3m3/d.	Mike Wylie	Local
22	7	<b>Latornell C/S</b> - Station Maintenance (5 days).	09/28/15	10/02/15	Potential IT/FT receipt restriction Upstream of James River excluding Ricinius West, Ricinius and Strachan. Capability 225 E6m3/d. Typical flow 210 - 240 E6m3/d.	Brooke Dillabough	USJR
23	6	<b>Woodenhouse B C/S</b> - Station Modifications (6 days).	09/30/15	10/05/15	Potential IT/FT delivery restriction in Segments 10, 11 & 14. Capability: 56 E6m3/d. Typical Flow: 50-55 E6m3/d	Andrea Watters	OSDA
24	23	<b>NPS 6 Chauvin Lateral</b> - Pipeline Maintenance (6 days within window). <b>Dates Revised</b>	10/01/15	10/31/15	Nil required at Estridge Lake and Chauvin meter stations. Typical flow 70 E3m3/d.	Rahim Ruda	Local
25	23	<b>NPS 8 Wainwright East Lateral</b> - Pipeline Maintenance (4 days within window).	10/01/15	11/30/15	Nil required at Wainwright East. Typical flow 40 E3m3/d.	Mike Wylie	Local
26	12	<b>NPS 12 Flat Lake Lateral</b> - Pipeline Maintenance (5 days within window).	10/01/15	11/30/15	Nil required at Flat Lake. Typical flow 120 E3m3/d.	Mike Wylie	Local
27	3	<b>Hidden Lake North C/S</b> - Station Maintenance (5 days).	10/05/15	10/09/15	Potential IT/FT delivery restriction in Segments 10, 11 & 14. Capability 57 E6m3/d. Typical flow 50 - 55 E6m3/d. Potential IT/FT receipt restriction Upstream of James River excluding Ricinius West, Ricinius and Strachan. Capability 225 E6m3/d. Typical flow 210 - 240 E6m3/d	Brooke Dillabough	OSDA USJR
28	13	<b>NPS 8 Big Bend Lateral</b> - Pipeline Maintenance (3- 4 days).	10/07/15	10/12/15	Nil required at Big Bend meter station. Typical flow 130 E3m3/d.	Mike Wylie	Local
29	8	<b>Clearwater Unit #5</b> - Unit Maintenance (3 days).	10/27/15	10/29/15	Potential IT/FT receipt restriction in Upstream of James River (USJR). Capability 230 E6m3/d. Typical flow 210 - 240 E6m3/d.	Brooke Dillabough	USJR
30	18	<b>NPS 42 Edson Mainline Loop</b> - Pipeline Modifications (10 days within window).	11/01/15	11/15/15	Potential IT/FT delivery restriction at EGAT. Capability 133 E6, Typical flow 120-135 E6m3/d.	Rahim Ruda	EGAT

	SE		DATES				
	#	OUTAGE DESCRIPTION	START	FINISH	RECEIPT/DELIVERY IMPACT	CONTACT	AREA
31	20	<b>NPS 12 Alderson Lateral</b> - Pipeline Maintenance (7 days). <b>Dates Revised</b>	11/02/15	11/08/15	Nil required at Alderson North, Bantry, Tilley and Tilley South #2 meter stations. Typical flow 900 E3m3/d.	Rahim Ruda	Local
32	1	<b>NPS 12 Paddle Prairie Lateral</b> - Pipeline Maintenance (4 days). C8	11/24/15	11/27/15	Nil required at Keg River East. Typical flow 35 E3m3/d. Potential IT/FT restriction required for Paddle Prairie, Paddle Prairie South, Boyer and Boyer East meter stations. Capability 0 to 400 E3m3/d. Typical flow 400 E3m3/d.	Rahim Ruda	Local
33	21	<b>NPS 42 Western Alberta Mainline Loop</b> - Pipeline Modifications (5 days within window). <b>Dates Revised</b>	12/01/15	12/15/15	Potential IT/FT delivery restriction at ALTBC. Capability 63 E6m3/d, Typical flow 55-60 E6m3/d.	Rahim Ruda	ALTBC
34	21	<b>NPS 42 Western Alberta Mainline Loop</b> - Pipeline Modifications (5 days within window). <b>New</b>	12/01/15	12/15/15	Potential IT/FT delivery restriction at ALTBC. Capability 62 E6m3/d, Typical flow 55-60 E6m3/d.	Rahim Ruda	ALTBC
35	10	<b>NPS 24 Fort McKay Mainline</b> - Pipeline Maintenance (2 days within window) -	2016	2016	IT/FT delivery restriction required for Aspen Sales, Wapasu Creek Sales, Kearl Sales and Firebag Sales meter stations. Capability = 6080 E3m3. Typical flow 8300 E3m3.	Andrea Watters	Local
36	10	<b>NPS 30 Fort McKay Mainline</b> - Pipeline Maintenance (2 days within window) -	2016	2016	IT/FT delivery restriction required for Horizon Sales, Aurora Sales, Aurora # 2 Sales, Jackpine Creek Sales, Aspen Sales, Wapasu Creek Sales, Kearl Sales and Firebag Sales meter stations. Capability = 10,500 E3m3. Typical flow 13,000 E3m3.	Andrea Watters	Local