

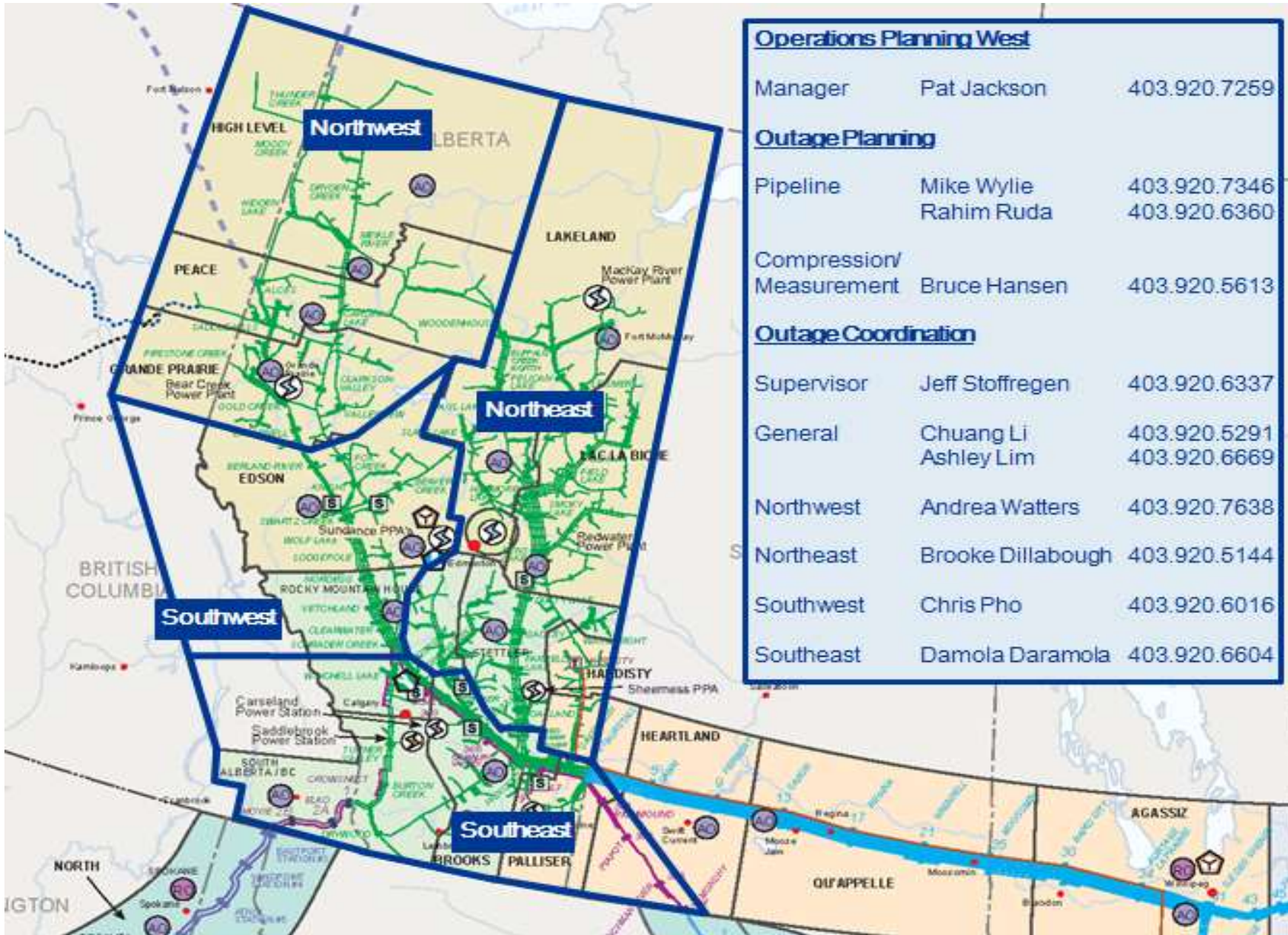


Monthly Outage Forecast

February, 2016

February Monthly Outage Forecast

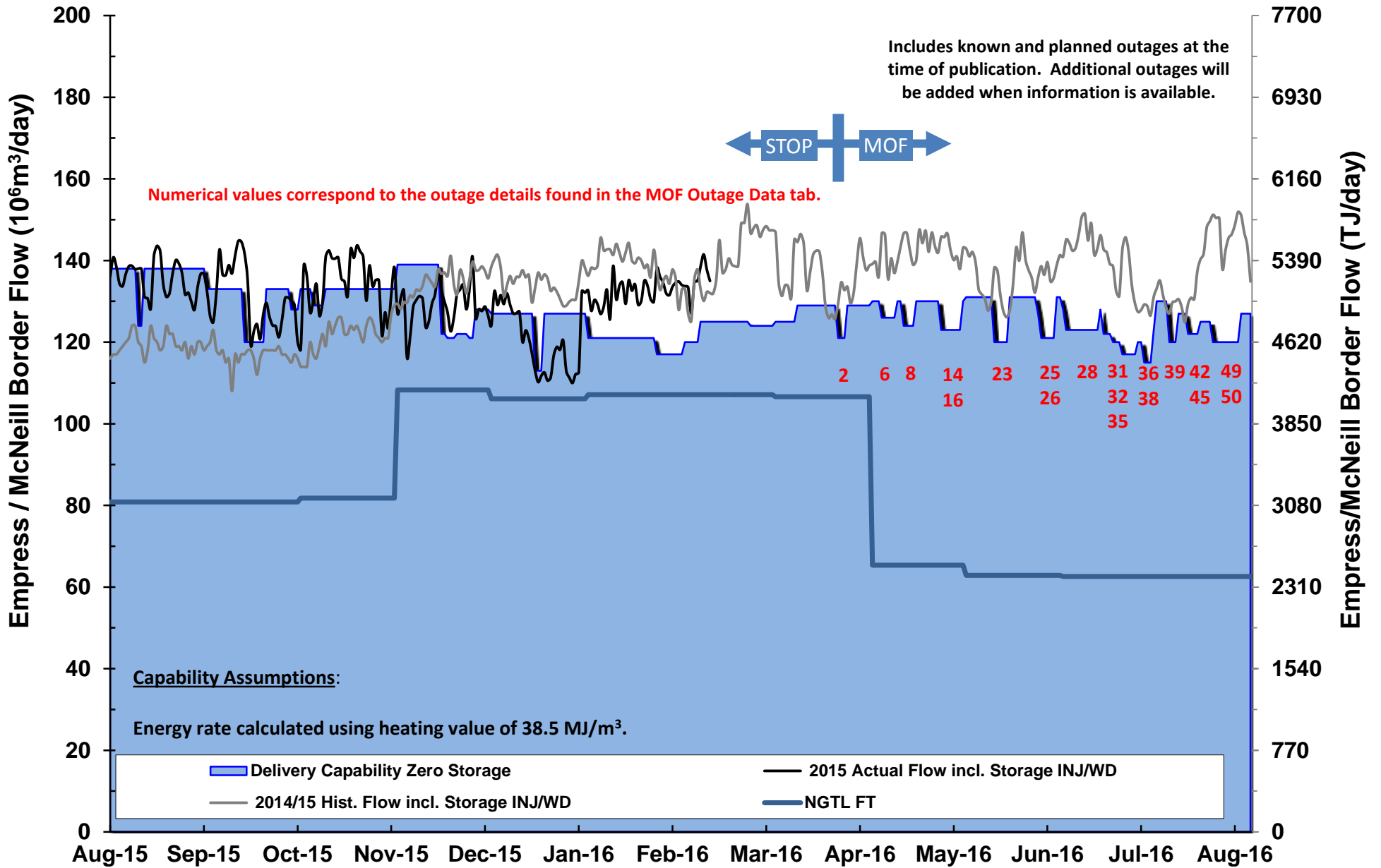
The Monthly Outage Forecast is a tool provided by TransCanada to show the estimated operational capability. This information is provided for informational purposes only and is not to be relied upon for any other purpose whatsoever. The information is based upon certain assumptions that may or may not be accurate, and therefore is subject to various risks and uncertainties. TransCanada shall not be liable for damages sustained as a result of any use or reliance on such information. Please note, only known and planned outages at the time of publishing will be included in the Monthly Outage Forecast. As new outages are planned they will be added to subsequent MOF reports.



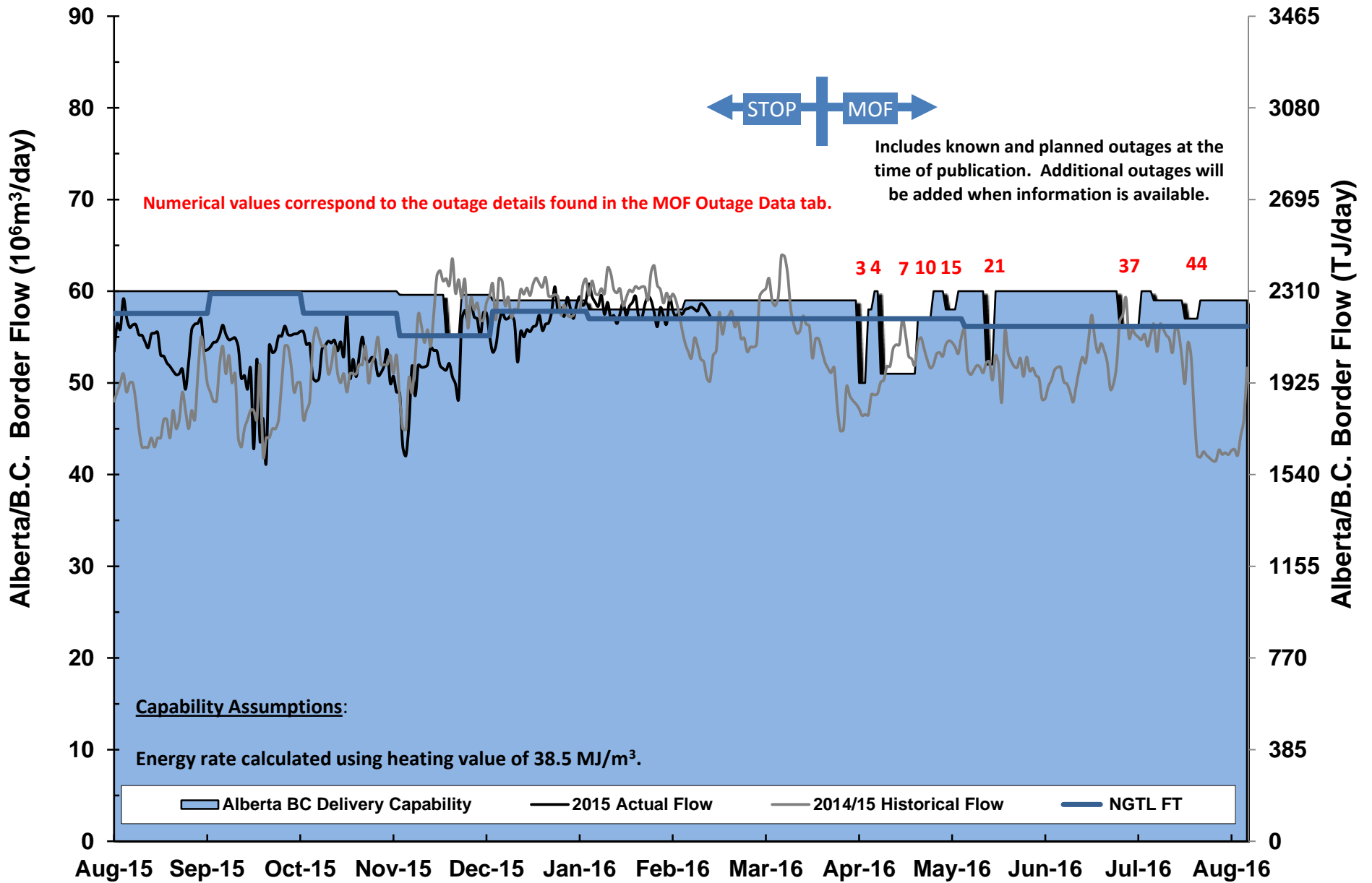
For NGTL System Facilities Segment codes please view link below

http://www.transcanada.com/customerexpress/docs/fh_system_maps/AB_System_Map_2015_Segments_Rev16.pdf

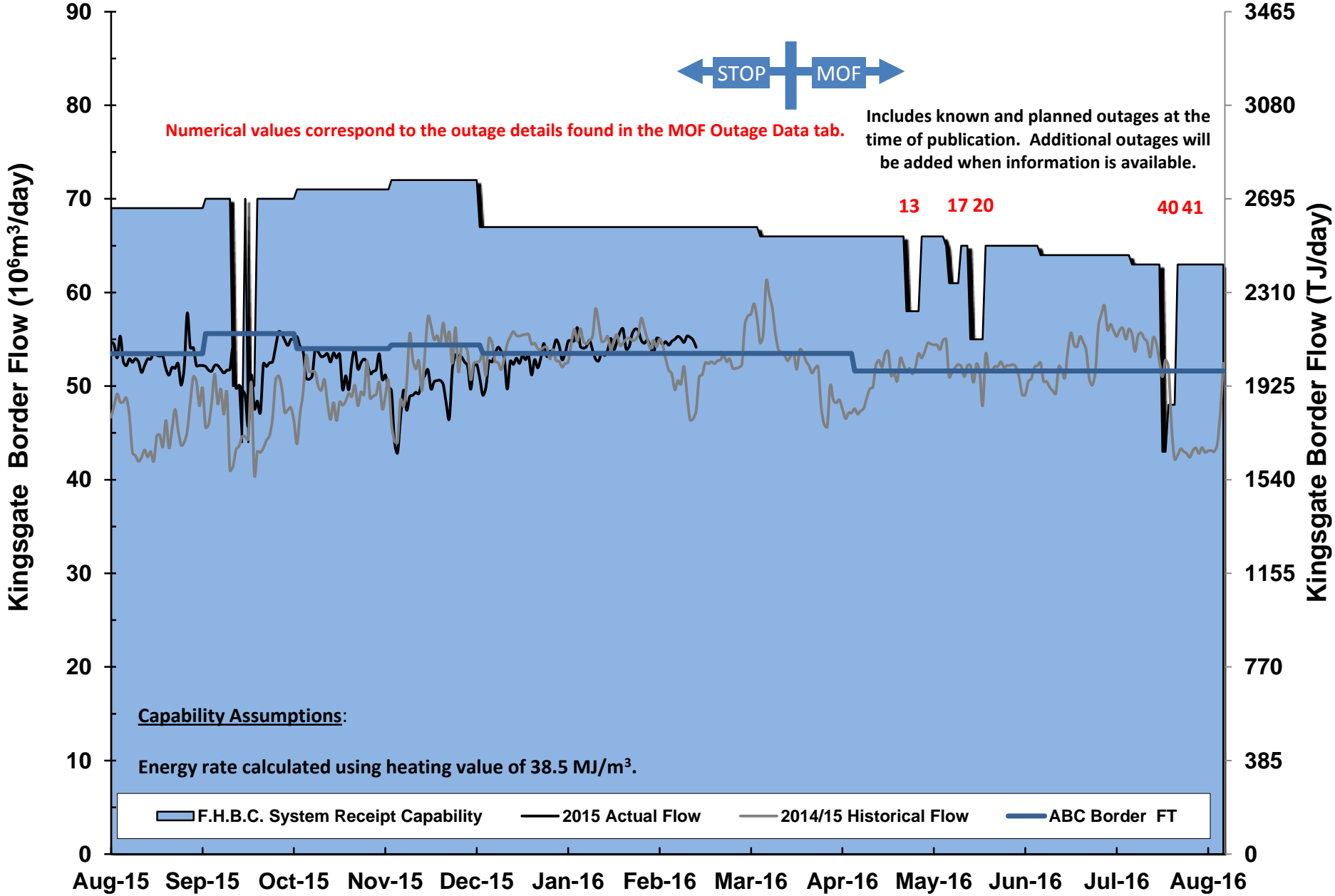
Empress/McNeill Border



Alberta/B.C. Border

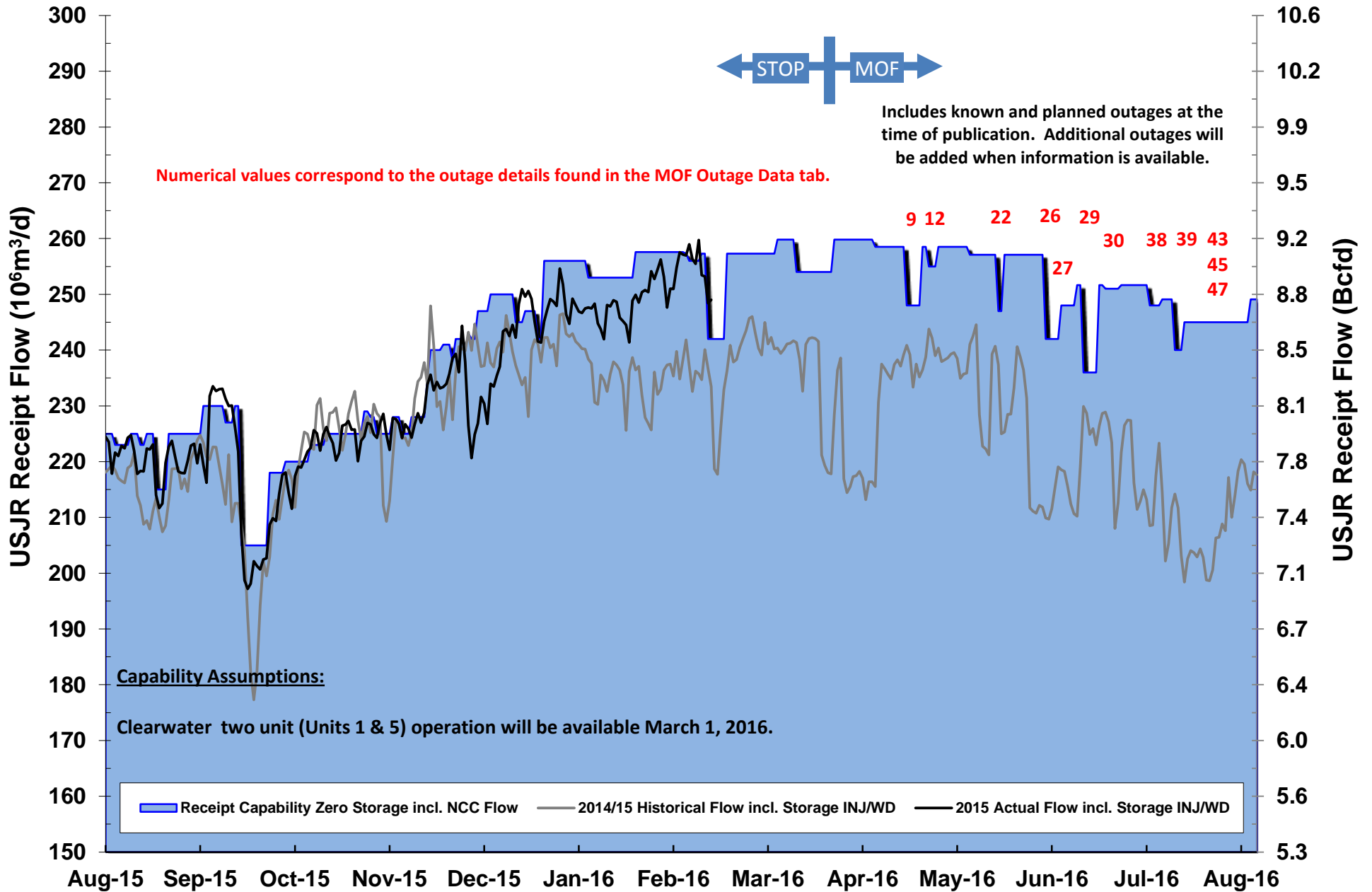


Kingsgate Border



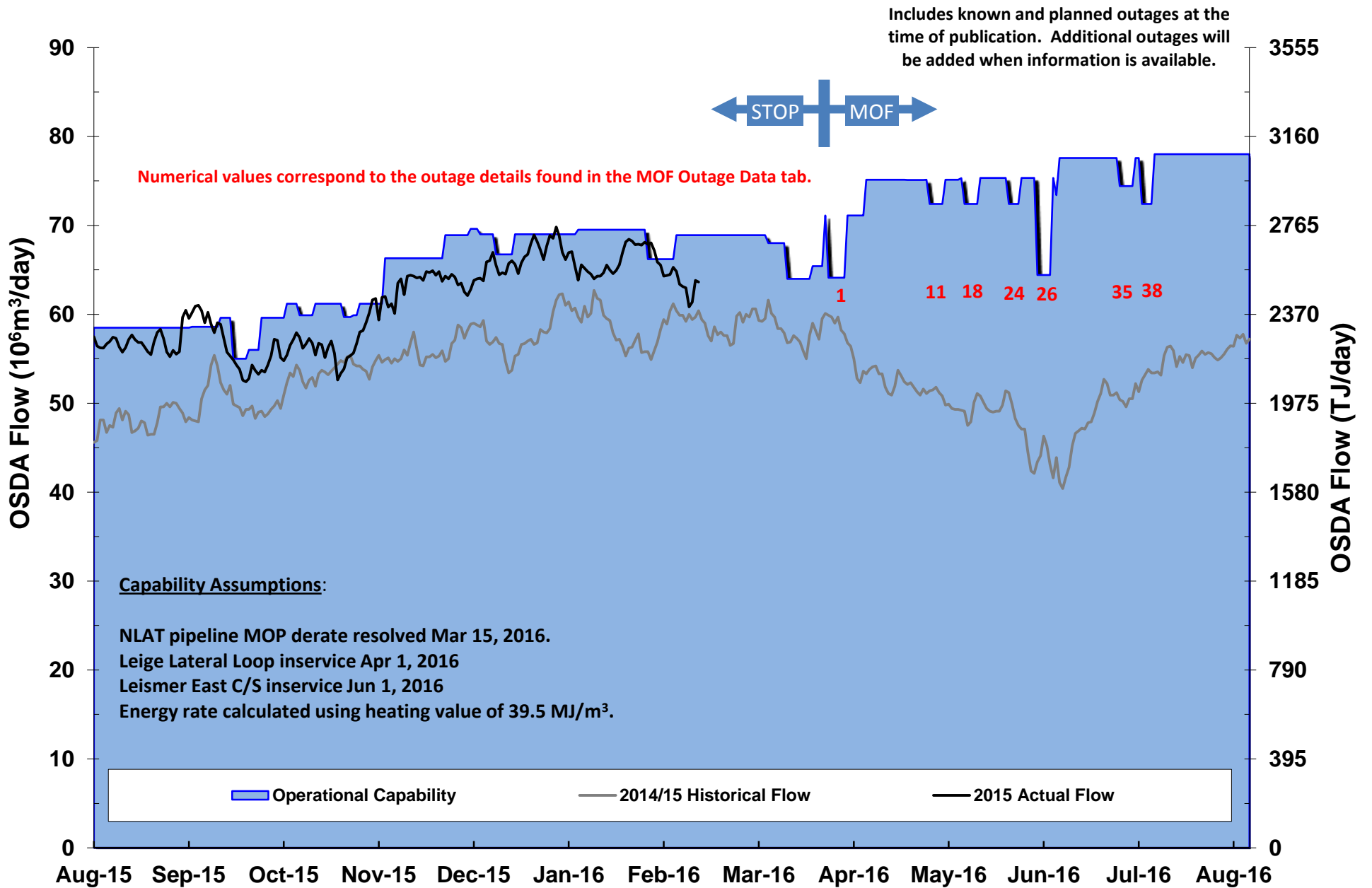
Upstream of James River Outlook

Segments 1,2,3,4,5,7,8,9,24,26, partial 28



Oil Sands Delivery Area (OSDA) Outlook

Segments 10, 11,14



	SEG	OUTAGE DESCRIPTION	DATES		RECEIPT/DELIVERY IMPACT	CONTACT	AREA
	#		START	FINISH			
1	11	NPS 30 Leismer Kettle River Crossover - Pipeline Modifications (6 days within window). Capacity revised	03/19/16	03/31/16	Potential IT/FT delivery restriction in Segments 10, 11 & 14. Capability 62 E6m3/d. Typical flow 60-70 E6m3/d	Brooke Dillabough	OSDA
2	20	Jenner C/S - Station Maintenance (3 days). Capacity revised	03/21/16	03/23/16	Potential IT/FT delivery restriction at EGAT. Capability 121 E6m3/d, Typical Flow 125-135 E6m3/d.	Damola Daramola	EGAT
3	21	Burton Creek C/S- Station Maintenance (3 days). Dates revised	03/28/16	03/30/16	Potential IT/FT delivery restriction at ALTBC. Capability 50 E6m3/d. Typical flow 50-63 E6m3/d.	Damola Daramola	ALTBC
4	21	Burton Creek #2 - Unit Maintenance (2 days). Dates revised	03/31/16	04/01/16	Potential IT/FT delivery restriction at ALTBC. Capability 58 E6m3/d, Typical flow 59-63 E6m3/d.	Damola Daramola	ALTBC
5	23	NPS 10 Wainwright Lateral - Pipeline Maintenance (8 days within window). New	04/01/16	04/15/16	IT/FT receipt restriction in Segment 23. Capability 0 E3m3/d, Typical flow 400-500 E3m3/d.	Ashley Lim	Local
6	19	Red Deer River C/S - Station Maintenance (5 days).	04/04/16	04/08/16	Potential IT/FT delivery restriction at EGAT. Capability 126 E6m3/d. Typical 125-135 e6m3/d	Damola Daramola	EGAT
7	21	Winchell Lake C/S - Station Maintenance (12 days). Dates revised	04/04/16	04/15/16	Potential IT/FT delivery restriction at ALTBC. Capability 51 E6m3/d, Typical flow 59-63 E6m3/d.	Damola Daramola	ALTBC
8	18	Crawling Valley C/S -Station Maintenance (4 days).	04/11/16	04/14/16	Potential IT/FT delivery restriction at EGAT. Capability 124 E6m3/d. Typical 125 - 135 e6m3/d	Damola Daramola	EGAT
9	7	Latornell C/S - Station Maintenance (5 days). Dates and Capacity revised	04/11/16	04/15/16	Potential IT/FT receipt restriction in Segments 1,2,3,4,5,7,8,9,24,26 and partial 28. Capability 248 E6m3/d, Typical Flow 230-260 E6m3/d.	Andrea Watters	USJR
10	21	NPS 36 Foothills Pipeline Zone 7 - Pipeline Maintenance (8 days). New	04/13/16	04/20/16	Potential IT/FT delivery restriction at ALTBC. Capability 57 E6m3/d, Typical flow 59-63 E6m3/d.	Damola Daramola	ALTBC
11	12	NPS 16 Kirby Lateral Loop - Pipeline Modifications (5 days within window).	04/15/16	04/30/16	Potential IT/FT delivery restriction in Segments 10, 11 & 14. Capability 71 E6m3/d. Typical flow 60-70 E6m3/d.	Brooke Dillabough	OSDA

C/S Compressor Station
M/S Meter Station
Shade - indicates new or changed
Inquiries? Contact info in outages above.

EGAT - East Gate (Empr/McNeill)
ALTBC - Alta/B.C. Border
USJR - Upstream of James River
OSDA - Oil Sands Delivery Area

	SEG	OUTAGE DESCRIPTION	DATES		RECEIPT/DELIVERY IMPACT	CONTACT	AREA
	#		START	FINISH			
12	8	Vetchland C/S - Station Maintenance (3 days).	04/18/16	04/20/16	Potential IT/FT receipt restriction in Segments 1,2,3,4,5,7,8,9,24,26 and partial 28. Capability 255 E6m3/d, Typical Flow 230-260 E6m3/d.	Chris Pho	USJR
13	21	Elko C/S - Station Maintenance (5 days).	04/18/16	04/22/16	Potential IT/FT receipt restriction on FHBC. Capability 58 E6m3/d. Typical flow 40 - 65 E6m3/d.	Damola Daramola	FHBC
14	19	NPS 42 Eastern Alberta Mainline Loop #3 - Pipeline Maintenance (11 days). Capacity revised	04/23/16	04/29/16	Potential IT/FT delivery restriction at EGAT. Capability 123 E6m3/d. Typical Flow 125-135 E6m3/d.	Damola Daramola	EGAT
15	21	Turner Valley #2 - Unit Maintenance (4 days).	04/25/16	04/28/16	Potential IT/FT delivery restriction at ALTBC. Capability 58 E6m3/d, Typical flow 59-63 E6m3/d.	Damola Daramola	ALTBC
16	18	Princess B #6 C/S - Station Maintenance (5 days).	04/25/16	04/29/16	Potential IT/FT delivery restriction at EGAT. Capability 126 E6m3/d. Typical 125 - 135 e6m3/d	Damola Daramola	EGAT
17	21	Crowsnest A Unit #K - Unit Maintenance (4 days).	05/02/16	05/05/16	Potential IT/FT receipt restriction on FHBC. Capability 61 E6m3/d. Typical flow 40 - 65 E6m3/d	Damola Daramola	FHBC
18	15	Dusty Lake, Gadsby A & B C/S - Station Maintenance (5 days).	05/02/16	05/06/16	Potential IT/FT delivery restriction in Segments 10, 11 & 14. Capability 71 E6m3/d. Typical flow 60-70 E6m3/d.	Brooke Dillabough	OSDA
19	20	NPS 10 Etzikom Lateral - Pipeline Maintenance (6 days)	05/03/16	05/07/16	Nil required at Saamis Sales, South Saskatchewan River, Bullshead, Murray Lake, Etzikom A, Etzikom B, Etzikom D. Typical flow 350 E3m3/d.	Chris Pho	Local
20	21	Moyie C/S - Station Maintenance (5 days).	05/09/16	05/13/16	Potential IT/FT receipt restriction on FHBC. Capability 55 E6m3/d. Typical flow 40 - 65 E6m3/d.	Damola Daramola	FHBC
21	21	Turner Valley C/S - Station Maintenance (3 days).	05/09/16	05/11/16	Potential IT/FT delivery restriction at ALTBC. Capability 52 E6m3/d. Typical flow 50-63 E6m3/d.	Damola Daramola	ALTBC
22	7	Berland River C/S - Station Maintenance (2 days). Capacity revised	05/10/16	05/11/16	Potential IT/FT receipt restriction in Segments 1,2,3,4,5,7,8,9,24,26 and partial 28. Capability 247 E6m3/d, Typical Flow 230-260 E6m3/d.	Andrea Watters	USJR

C/S Compressor Station
M/S Meter Station
Shade - indicates new or changed
Inquiries? Contact info in outages above.

EGAT - East Gate (Empr/McNeill)
ALTBC - Alta/B.C. Border
USJR - Upstream of James River
OSDA - Oil Sands Delivery Area

	SEG	OUTAGE DESCRIPTION	DATES		RECEIPT/DELIVERY IMPACT	CONTACT	AREA
	#		START	FINISH			
23	18	NPS 36 EAS Mainline Loop #2 - Pipeline Maintenance (5 days). New	05/10/16	05/14/16	Potential IT/FT delivery restriction at EGAT. Capability 120 E6m3/d. Typical flow 125-135 E6m3/d.	Chris Pho	EGAT
24	6	Paul Lake A & B C/S - Station Maintenance (4 days)	05/16/16	05/19/16	Potential IT/FT delivery restriction in Segments 10, 11 & 14. Capability 71 E6m3/d. Typical flow 60-70 E6m3/d.	Brooke Dillabough	OSDA
25	18	Schrader Creek #3 - Station Maintenance (3 days).	05/24/16	05/26/16	Potential IT/FT delivery restriction at EGAT. Capability 127 E6m3/d, Typical flow 125-135 E6m3/d.	Damola Daramola	EGAT
26	3	NPS 48 Tanghe Creek Lateral Loop 2 & Chinchaga Loop 3 - Pipeline Maintenance (5 days). Capacity Revised	05/25/16	05/29/16	Potential IT/FT delivery restriction in Segments 10, 11 & 14. Capability 63 E6m3/d. Typical flow 60-70 E6m3/d. Potential IT/FT receipt restriction in Segments 1,2,3,4,5,7,8,9,24,26 and partial 28. Capability 242 E6m3/d, Typical Flow 230-260 E6m3/d. Potential IT/FT delivery at EGAT. Capability 121 E6m3/d. Typical 125-135 e6m3/d	Andrea Watters	OSDA USJR EGAT
27	8	Wolf Lake C/S - Station Maintenance (5 days).	05/30/16	06/03/16	Potential IT/FT receipt restriction in Segments 1,2,3,4,5,7,8,9,24,26 and partial 28. Capability 248 E6m3/d, Typical Flow 230-260 E6m3/d.	Chris Pho	USJR
28	18	NPS 42 Edson & CAS Mainline Loop - Pipeline Maintenance (11 days).	06/02/16	06/12/16	Potential IT/FT delivery restriction at EGAT. Capability 123 E6m3/d. Typical flow 125-135 E6m3/d.	Damola Daramola	EGAT
29	7	Gold Creek C/S - Station Maintenance (5 days). Capacity Revised	06/06/16	06/10/16	Potential IT/FT receipt restriction in Segments 1,2,3,4,5,7,8,9,24,26 and partial 28. Capability 236 E6m3/d, Typical Flow 230-260 E6m3/d.	Andrea Watters	USJR
30	9	Lodgepole C/S - Station Maintenance (5 days).	06/13/16	06/17/16	Potential IT/FT receipt restriction in Segments 1,2,3,4,5,7,8,9,24,26 and partial 28. Capability 251 E6m3/d, Typical Flow 230-260 E6m3/d.	Chris Pho	USJR
31	18	Hussar A & B C/S - Station Maintenance (3 days). Dates revised	06/14/16	06/16/16	Potential IT/FT delivery restriction at EGAT. Capability 122 E6m3/d, Typical flow 125-135 E6m3/d.	Damola Daramola	EGAT
32	18	NPS 48 EAS Mainline Loop #4 - Pipeline Modifications (7 days within window).	06/15/16	06/30/16	Potential IT/FT delivery restriction at EGAT. Capability 120 E6m3/d. Typical flow 125-135 E6m3/d.	Rahim Ruda	EGAT

C/S Compressor Station
M/S Meter Station
Shade - indicates new or changed
Inquiries? Contact info in outages above.

EGAT - East Gate (Empr/McNeill)
ALTBC - Alta/B.C. Border
USJR - Upstream of James River
OSDA - Oil Sands Delivery Area

SEG	#	OUTAGE DESCRIPTION	DATES		RECEIPT/DELIVERY IMPACT	CONTACT	AREA
			START	FINISH			
33	16	NPS 10 Irish Lateral - Pipeline Modifications (4 days within window).	06/15/16	06/30/16	Nil required at Irish and Morecambe . Typical flow 230 E3m3/d. Nil required at Elk Point and Landon Lake Lakes. Typical flow 30 E3m3/d.	Rahim Ruda	Local
34	15	NPS 8 Castor Lateral - Pipeline Modifications (6 days within window).	06/15/16	06/30/16	Nil required at Castor. Typical flow 130 E3m3/d.	Rahim Ruda	Local
35	6	Woodenhouse B2 C/S - Station Maintenance (5 days). Capacity revised	06/20/16	06/24/16	Potential IT/FT delivery restriction in Segments 10, 11 & 14. Capability 73 E6m3/d. Typical flow 60-70 E6m3/d. Potential IT/FT delivery restriction at EGAT. Capability 125 E6m3/d. Typical 125-135 e6m3/d	Brooke Dillabough	OSDA EGAT
36	18	NPS 42 Foothills Pipeline Zone 6 - Pipeline Maintenance (11 days). New	06/20/16	06/29/16	Potential IT/FT delivery restriction at EGAT. Capability 120 E6m3/d. Typical flow 125-135 E6m3/d.	Chris Pho	EGAT
37	21	NPS 36 WAS Mainline - Pipeline Maintenance (7 days). New	06/20/16	06/26/16	Potential IT/FT delivery restriction at ALTBC. Capability 56 E6m3/d, Typical flow 59-63 E6m3/d.	Damola Daramola	ALTBC
38	6	Otter Lake C/S - Station Maintenance (4 days). Capacity revised	06/27/16	06/30/16	Potential IT/FT receipt restriction in Segments 1,2,3,4,5,7,8,9,24,26 and partial 28. Capability 248 E6m3/d, Typical Flow 230-260 E6m3/d. Potential IT/FT delivery restriction in Segments 10, 11 & 14. Capability 71 E6m3/d. Typical flow 60-70 E6m3/d. Potential IT/FT delivery restriction at EGAT. Capability 123 E6m3/d. Typical 125-135 e6m3/d	Brooke Dillabough	USJR OSDA EGAT
39	8	Clearwater C/S - Station Maintenance (3 days).	07/05/16	07/07/16	Potential IT/FT delivery restriction at EGAT. Capability 120 E6m3/d. Typical 125-135 e6m3/d. Potential IT/FT receipt restriction in Segments 1,2,3,4,5,7,8,9,24,26 and partial 28. Capability 240 E6m3/d, Typical Flow 230-260 E6m3/d.	Chris Pho	EGAT USJR
40	21	Crowsnest A & B C/S - Station Maintenance (2 days). Dates revised	07/11/16	07/12/16	Potential IT/FT receipt restriction on FHBC. Capability 43 E6m3/d. Typical flow 40 - 65 E6m3/d.	Damola Daramola	FHBC
41	21	Crowsnest A C/S - Station Maintenance (5 days). Dates revised	07/11/16	07/15/16	Potential IT/FT receipt restriction on FHBC. Capability 48 E6m3/d. Typical flow 40 - 65 E6m3/d.	Damola Daramola	FHBC
42	18	Acme C/S - Station Maintenance (4 days).	07/11/16	07/14/16	Potential IT/FT delivery restriction at EGAT. Capability 122 E6m3/d, Typical flow 125-135 E6m3/d.	Damola Daramola	EGAT

C/S Compressor Station
M/S Meter Station
Shade - indicates new or changed
Inquiries? Contact info in outages above.

EGAT - East Gate (Empr/McNeill)
ALTBC - Alta/B.C. Border
USJR - Upstream of James River
OSDA - Oil Sands Delivery Area

SEG	#	OUTAGE DESCRIPTION	DATES		RECEIPT/DELIVERY IMPACT	CONTACT	AREA
			START	FINISH			
43	8	Nordegg C/S - Station Maintenance (18 days).	07/11/16	07/28/16	Potential IT/FT receipt restriction in Segments 1,2,3,4,5,7,8,9,24,26 and partial 28. Capability 245 E6m3/d, Typical Flow 230-260 E6m3/d.	Chris Pho	USJR
44	21	Schrader Creek #2 - Unit Maintenance (5 days).	07/11/16	07/15/16	Potential IT/FT delivery restriction at ALTBC. Capability 57 E6m3/d, Typical flow 59-63 E6m3/d.	Damola Daramola	ALTBC
45	18	NPS 48 EAS Mainline Loop #4 - Pipeline Modifications (7 days within window). Dates revised	07/12/16	07/23/16	Potential IT/FT delivery restriction at EGAT. Capability 125 E6m3/d. Typical 125-135 e6m3/d. Potential IT/FT receipt restriction in Segments 1,2,3,4,5,7,8,9,24,26 and partial 28. Capability 245 E6m3/d, Typical Flow 230-260 E6m3/d.	Rahim Ruda	EGAT USJR
46	12	NPS 10 Baptiste Lateral - Pipeline Modifications (6 days within window).	07/15/16	07/31/16	Nil required at Spear Lake. Typical flow 20 E3m3/d.	Rahim Ruda	Local
47	8	Clearwater #1 - Unit Maintenance (4 days).	07/18/16	07/21/16	Potential IT/FT receipt restriction in Segments 1,2,3,4,5,7,8,9,24,26 and partial 28. Capability 245 E6m3/d, Typical Flow 230-260 E6m3/d.	Chris Pho	USJR
48	21	NPS 18/20 Waterton Montana Lateral Loop - Pipeline Maintenance (7 days). New	07/18/16	07/24/16	Potential IT/FT delivery restriction at Alberta Montana Border. Capability 2500 E3. Typical flow 1500- 2500 E3.	Damola Daramola	Local
49	8	NPS 42 Foothills Pipeline Zone 6 - Pipeline Maintenance (8 days). Dates revised	07/19/16	07/27/16	Potential IT/FT delivery restriction at EGAT. Capability 125-135 E6m3/d. Typical 125-135 e6m3/d	Damola Daramola	EGAT
50	18	NPS 48 EAS Mainline Loop #4 - Pipeline Maintenance (7 days).	07/19/16	07/25/16	Potential IT/FT delivery restriction at EGAT. Capability 125 E6m3/d. Typical 125-135 e6m3/d	Rahim Ruda	EGAT
51	21	Drywood C/S - Station Maintenance (3 days).	07/26/16	07/28/16	Potential IT/FT delivery restriction at Alberta Montana Border. Capability 2500 E3m3/d. Typical flow 1500- 2500 E3m3/d.	Damola Daramola	Local
52	24	NPS 10 Greencourt Lateral - Pipeline Maintenance (12 days).	08/05/16	08/16/16	Nil required at Greencourt. Typical flow 20 E3m3/d.	Rahim Ruda	Local
53	4	Alces River C/S - Station Maintenance (4 days).	08/08/16	08/11/16	Potential IT/FT receipt restriction in Segments 1,2,3,4,5,7,8,9,24,26 and partial 28. Capability 245 E6m3/d, Typical Flow 230-260 E6m3/d.	Andrea Watters	USJR

C/S Compressor Station
M/S Meter Station
Shade - indicates new or changed
Inquiries? Contact info in outages above.

EGAT - East Gate (Empr/McNeill)
ALTBC - Alta/B.C. Border
USJR - Upstream of James River
OSDA - Oil Sands Delivery Area

	SEG	OUTAGE DESCRIPTION	DATES		RECEIPT/DELIVERY IMPACT	CONTACT	AREA
	#		START	FINISH			
54	8	Swartz Creek C/S - Station Maintenance (5 days).	08/15/16	08/19/16	Potential IT/FT receipt restriction in Segments 1,2,3,4,5,7,8,9,24,26 and partial 28. Capability 247 E6m3/d, Typical Flow 230-260 E6m3/d.	Chris Pho	USJR
55	12	NPS 24 Flat Lake Lateral Loop #3 - Pipeline Modifications (5 days within window).	08/15/16	08/30/16	Potential IT/FT delivery restriction in Segments 10, 11 & 14. Capability 68 E6m3/d. Typical flow 60-70 E6m3/d.	Rahim Ruda	OSDA
56	21	NPS 42 Western Alberta Mainline Loop - Pipeline Modifications 6 days within window).	08/17/16	08/22/16	Potential IT/FT delivery restriction at ALTBC. Capability 60 E6m3/d, Typical flow 55-60 E6m3/d.	Chris Pho	ALTBC
57	19	NPS 42 Foothills Pipeline Zone 9 - Pipeline Maintenance (7 days). Dates revised	08/23/16	08/30/16	Potential IT/FT receipt restriction in SK. Capability 35-50 E6, typical flow 40-45 E6.	Damola Daramola	FHSK
58	10	NPS 30 Fort McKay Mainline - Pipeline Maintenance (7 days).	08/30/16	09/05/16	IT/FT delivery restriction required for Horizon Sales, Aurora Sales, Aurora # 2 Sales, Jackpine Creek Sales, Aspen Sales, Wapasu Creek Sales, Kearl Sales and Firebag Sales meter stations. Capability = 13000 E3m3/d. Typical flow 15000 to 16000 E3m3/d.	Brooke Dillabough	Local
59	6	NPS 24 Peerless Lake Lateral Loop - Pipeline Modifications (6 days within window).	09/01/16	09/15/16	Potential IT/FT delivery restriction in Segments 10, 11 & 14. Capability 65 E6m3/d. Typical flow 60-70 E6m3/d.	Rahim Ruda	OSDA
60	12	NPS 30 Paul Lake Crossover - Pipeline Modifications (6 days within window).	09/01/16	09/15/16	Potential IT/FT delivery restriction in Segments 10, 11 & 14. Capability 60 E6m3/d. Typical flow 60-70 E6m3/d. Potential IT/FT receipt restriction in Segments 1,2,3,4,5,7,8,9,24,26 and partial 28. Capability 240 E6m3/d, Typical Flow 240-260 E6m3/d.	Rahim Ruda	OSDA USJR
61	10	NPS 24 Fort McKay Mainline - Pipeline Maintenance (7 days).	09/06/16	09/10/16	IT/FT delivery restriction required for Aspen Sales, Wapasu Creek Sales, Kearl Sales and Firebag Sales meter stations. Capability = 8300 E3m3/d. Typical flow 10000 to 12000 E3m3/d.	Brooke Dillabough	Local
62	7	Berland River C/S - Station Maintenance (3 days).	09/13/16	09/15/16	Potential IT/FT receipt restriction in Segments 1,2,3,4,5,7,8,9,24,26 and partial 28. Capability 252 E6m3/d, Typical Flow 230-260 E6m3/d.	Andrea Watters	USJR
63	24	NPS 10 Judy Creek Lateral - Pipeline Modifications (6 days within window).	09/15/16	09/30/16	Nil required at Judy Creek and Virginia Hills. Typical flow 300 E3m3/d. Nil required at Sakwatamau Sales. Typical flow 0 E3m3/d.	Rahim Ruda	Local
64	3	Hidden Lake North C/S - Station Maintenance (5 days).	09/19/16	09/23/16	Potential IT/FT receipt restriction in Segments 1,2,3,4,5,7,8,9,24,26 and partial 28. Capability 245 E6m3/d, Typical Flow 240-260 E6m3/d.	Andrea Watters	USJR

C/S Compressor Station
M/S Meter Station
Shade - indicates new or changed
Inquiries? Contact info in outages above.

EGAT - East Gate (Empr/McNeill)
ALTBC - Alta/B.C. Border
USJR - Upstream of James River
OSDA - Oil Sands Delivery Area

	SEG	OUTAGE DESCRIPTION	DATES		RECEIPT/DELIVERY IMPACT	CONTACT	AREA
	#		START	FINISH			
65	18	NPS 34 EAS Mainline Loop- Pipeline Maintenance (7 days). New	09/19/16	09/25/16	Potential IT/FT delivery restriction at EGAT. Capability 127 E6m3/d. Typical 125 - 135 e6m3/d	Damola Daramola	EGAT
66	7	Latornell C/S - Station Maintenance (4 days).	09/27/16	09/30/16	Potential IT/FT receipt restriction in Segments 1,2,3,4,5,7,8,9,24,26 and partial 28. Capability 242 E6m3/d, Typical Flow 230-260 E6m3/d.	Andrea Watters	USJR
67	2	NPS 8 Dunvegan West Lateral - Pipeline Modifications (6 days within window).	10/01/16	10/15/16	Nil required at Dunvegan West and Dunvegan West #2. Typical flow 50 E3m3/d.	Rahim Ruda	Local
68	15	NPS 30 North Lateral Loop #2 - Pipeline Modifications (5 days within window).	10/01/16	10/15/16	Potential IT/FT delivery restriction in Segments 6, 10-16, 23 & 28. Capability 102 E6m3/d. Typical flow 95-105 E6m3/d.	Rahim Ruda	OSDA
69	8	Clearwater #5 - Unit Maintenance (4 days). New	10/24/16	10/27/16	Potential IT/FT receipt restriction in Segments 1,2,3,4,5,7,8,9,24,26 and partial 28. Capability 252 E6m3/d, Typical Flow 230-260 E6m3/d.	Chris Pho	USJR

C/S Compressor Station
M/S Meter Station
Shade - indicates new or changed
Inquiries? Contact info in outages above.

EGAT - East Gate (Empr/McNeill)
ALTBC - Alta/B.C. Border
USJR - Upstream of James River
OSDA - Oil Sands Delivery Area