



Monthly Outage Forecast

October, 2015

DISCLAIMER

This information is provided for informational purposes only and is not to be relied upon for any other purpose whatsoever. The information is based upon certain assumptions that may or may not be accurate, and therefore is subject to various risks and uncertainties. TransCanada shall not be liable for damages sustained as a result of any use or reliance on such information.

October Monthly Outage Forecast

The Monthly Outage Forecast is a tool provided by TransCanada to show the estimated operational capability of the System or area, and the estimated relative change in capability associated with planned outages.

In an ongoing effort to provide customers with updated information, TransCanada has made updates to the Monthly Outage Forecast capability charts. As a result, customers may see a difference in the reported capabilities and flows shown in some charts in this release of the Monthly Outage Forecast.

Please be advised of the following changes to onstream timing have been made and reflected in the receipt and delivery capability graphs for JAMES and OSDA.

Capability assuming existing pipeline MOP derates remain in effect.

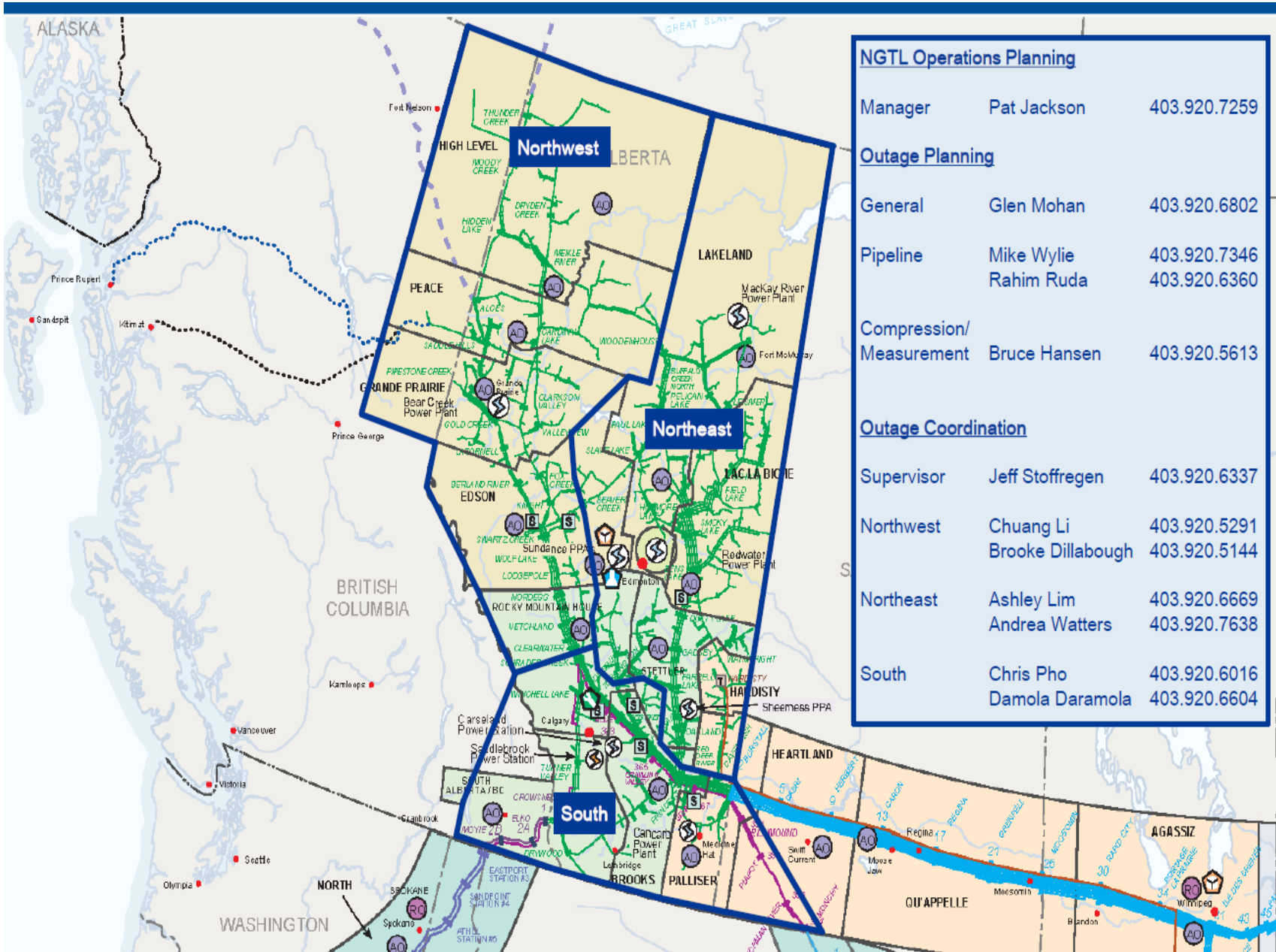
Capability assuming Saddle Hills and Alces B expansion facilities onstream Nov 1, 2015.

Capability assuming Otter Lake expansion facilities onstream Dec 15, 2015.

Capability assuming Clearwater 1 return to service Nov 1, 2015.

Capability assuming Clearwater 5 return to service February 2016.

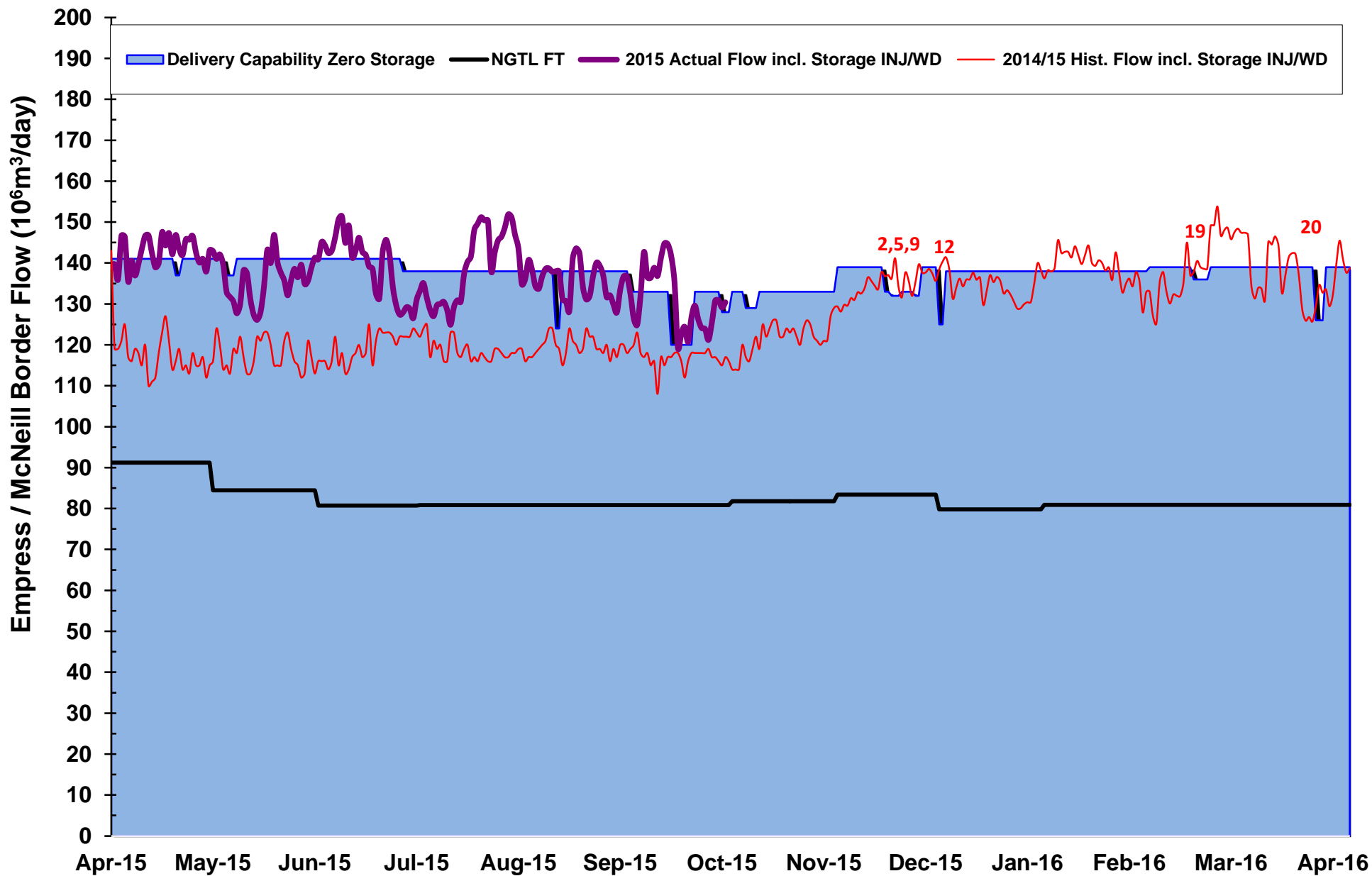
NGTL MAP



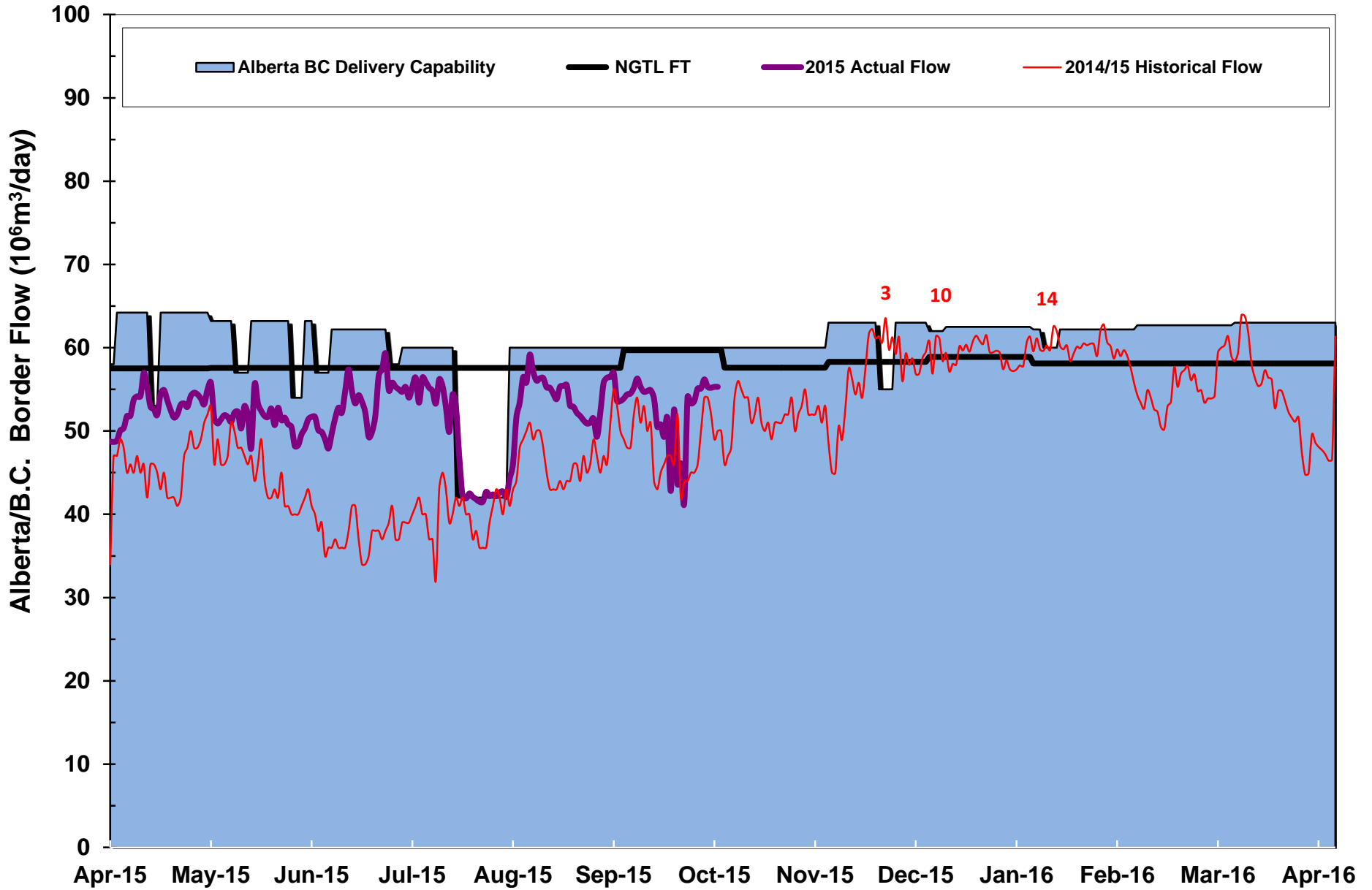
For NGTL System Facilities Segment codes please view link below

http://www.transcanada.com/customerexpress/docs/fh_system_maps/AB_System_Map_2015_Segments_Rev16.pdf

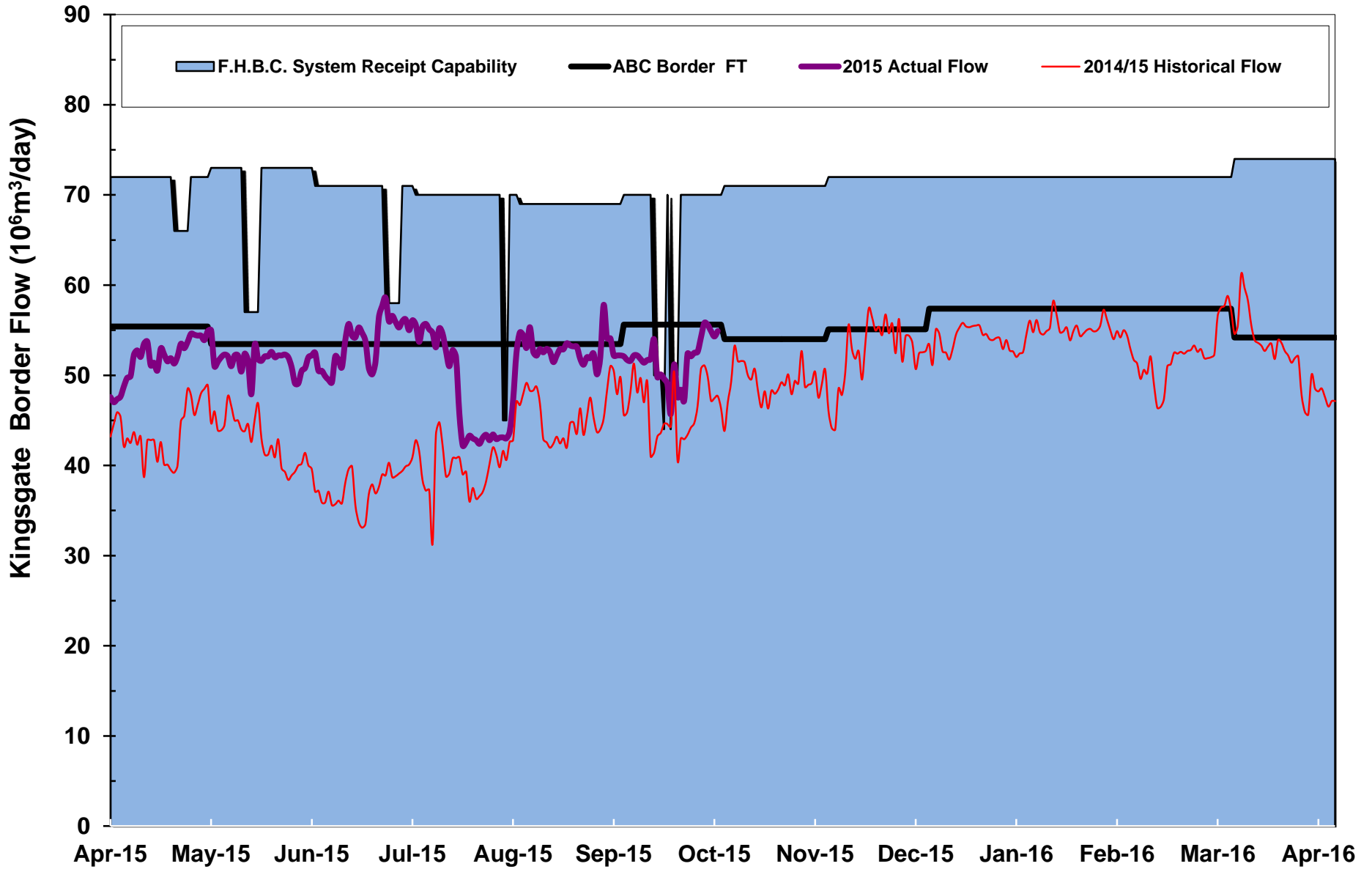
Empress/McNeill Border Outlook



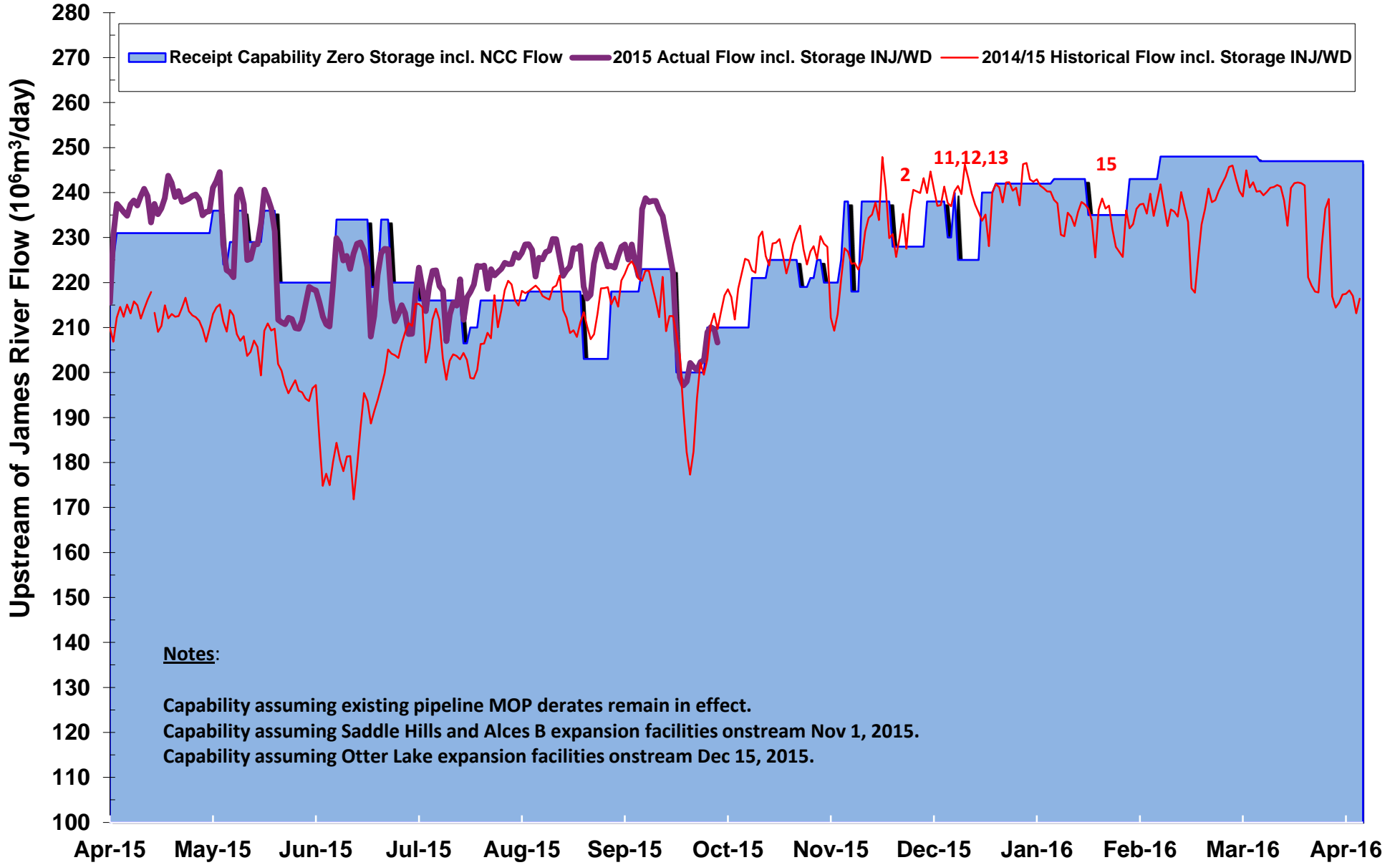
Alberta B.C. Border Outlook



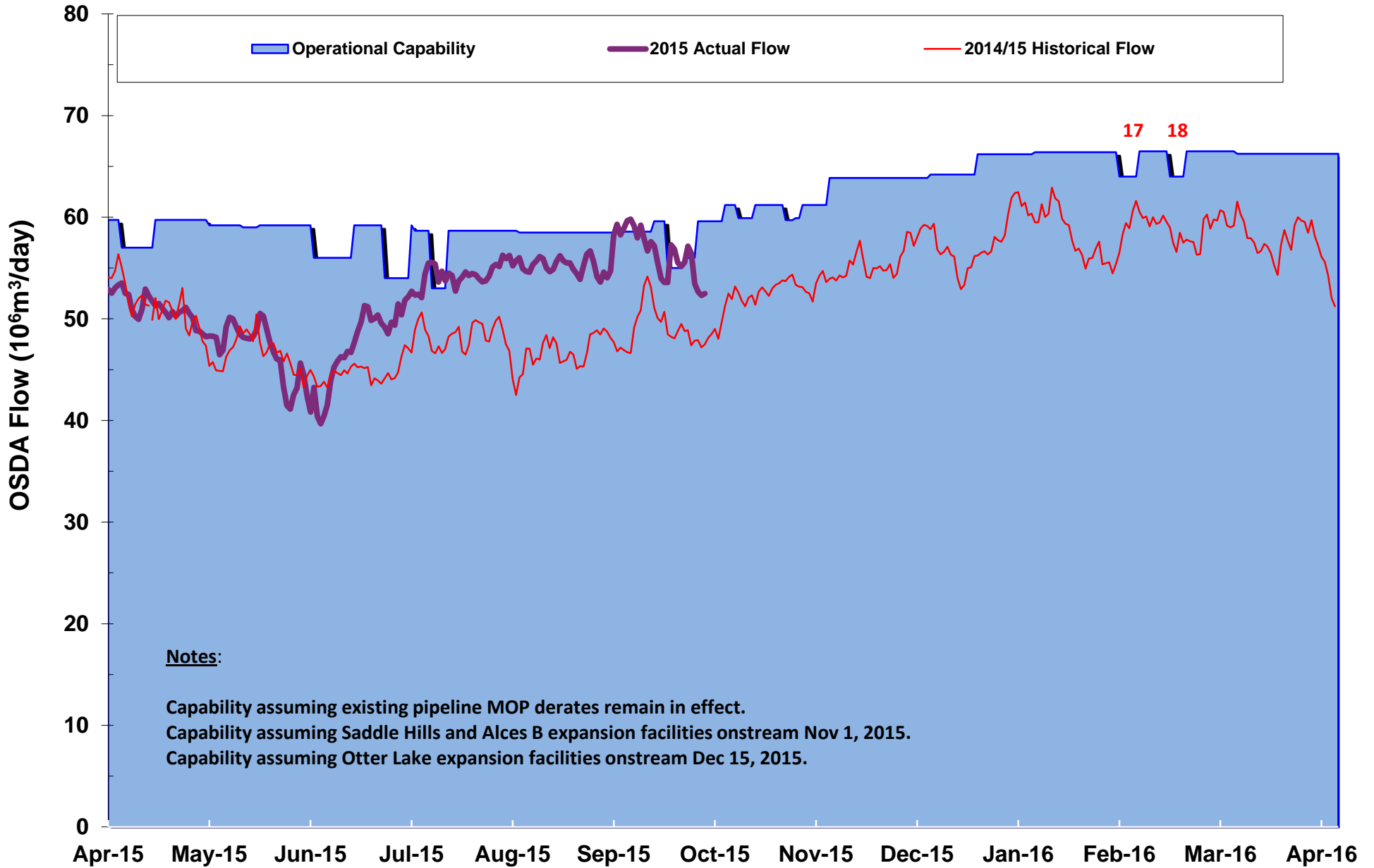
Kingsgate Border Outlook



Upstream of James River Outlook



Oil Sands Delivery Area (OSDA) Outlook Segments 10, 11,14



SEG	OUTAGE DESCRIPTION		DATES		RECEIPT/DELIVERY IMPACT	CONTAC	AREA
#			START	FINISH			
1	20	NPS 12 Alderson Lateral - Pipeline Maintenance (7 days).	11/02/15	11/08/15	Nil required at Alderson North, Bantry, Tilley and Tilley South #2 meter stations. Typical flow 900 E3m3/d.	Rahim Ruda	Local
2	18	NPS 42 Edson Mainline Loop - Pipeline Modifications (10 days within window). Dates and Capacity Revised	11/15/15	11/30/15	Potential IT/FT delivery restriction at EGAT. Capability 133 E6, Typical flow 120-135 E6m3/d. Potential IT/FT receipt restriction in Segments 1,2,3,4,5,7,8,9,24,26 and partial 28. Capability 228 E6m3/d. Typical flow 205 - 225 E6m3/d.	Chris Pho	EGAT USJR
3	21	Winchell Lake C/S - Station Maintenance (5 days). New	11/16/15	11/20/15	Potential IT/FT delivery restriction at ALTBC. Capability 55 E6m3/d, Typical flow 55-65 E6m3/d.	Damola Daramola	ALTBC
4	4	NPS 16 Gordondale Lateral - Pipeline Maintenance (7 days).	11/17/15	11/23/15	Potential IT/FT receipt restriction required for Gordondale meter station. Capability 1600 E3m3/d. Typical flow 2000-6000 E3m3/d.	Chuang Li	Local
5	18	Beiseker C/S - Station Maintenance (3 days). New	11/17/15	11/19/15	Potential IT/FT delivery restriction at EGAT. Capability 132 E6m3/d, Typical Flow 125-135 E6m3/d.	Damola Daramola	EGAT
6	9	NPS 30 Western Alberta System M/L - Pipeline Maintenance (5 days). New	11/17/15	11/21/15	Potential IT/FT receipt restriction at Edson M/S. Capability 5000 E3m3/d, Typical Flow 4500-6500 E3m3/d. Potential IT/FT receipt restriction at ATCO Ansel Interconnect M/S. Capability 1500 E3m3/d, Typical Flow 1500-2500 E3m3/d.	Chris Pho	Local
7	8	NPS 30 Edson Mainline - Pipeline Maintenance (4 days).	11/23/15	11/26/15	Potential IT/FT receipt restriction required for Edson meter station. Capability 4500 E3m3/d. Typical flow 4000-6000 E3m3/d. Receipt restriction required for ATCO's Ansel meter station. Capability 1500 E3m3/d. Typical flow 1500-2500 E3m3/d. Potential IT/FT receipt restriction required for Dismal Creek meter station. Capability 800 E3m3/d. Typical flow 800-1200 E3m3/d. Potential IT/FT receipt restriction required for Ferrier North and Ferrier South B meter stations. Capability 1000 E3m3/d. Typical flow 1300-1800 E3m3/d	Chuang Li	Local
8	1	NPS 12 Paddle Prairie Lateral - Pipeline Maintenance (4 days). C8	11/24/15	11/27/15	Nil required at Keg River East. Typical flow 35 E3m3/d. Potential IT/FT restriction required for Paddle Prairie, Paddle Prairie South, Boyer and Boyer East meter stations. Capability 0 to 400 E3m3/d. Typical flow 400 E3m3/d.	Rahim Ruda	Local
9	22	Princess B C/S - Station Maintenance (2 days). New	11/24/15	11/25/15	Potential IT/FT delivery restriction at EGAT. Capability 132 E6m3/d, Typical Flow 125-135 E6m3/d.	Damola Daramola	EGAT

C/S Compressor Station
M/S Meter Station
Shade - indicates new or changed
Inquiries? Contact info in outages above.

SEG	OUTAGE DESCRIPTION		DATES		RECEIPT/DELIVERY IMPACT	CONTAC	AREA
			START	FINISH			
10	21	NPS 42 Western Alberta Mainline Loop - Pipeline Modifications (5 days within window). Capacity Revised	12/01/15	12/15/15	Potential IT/FT delivery restriction at ALTBC. Capability 62 E6m3/d, Typical flow 55-60 E6m3/d.	Chris Pho	ALTBC
11	21	Schrader Creek East/West C/S- Station Maintenance (2 days). New	12/01/15	12/02/15	Potential IT/FT receipt restriction in Segments 1,2,3,4,5,7,8,9,24,26 and partial 28. Capability 230 E6m3/d, Typical Flow 205-225 E6m3/d. Potential IT/FT delivery restriction at EGAT. Capability 125 E6m3/d, Typical Flow 120-135 E6m3/d.	Chris Pho	USJR EGAT
12	5	NPS 36 Edson Mainline Extension - Pipeline Maintenance (5 days).	12/04/15	12/08/15	Potential IT/FT receipt restriction in Segments 1,2,3,4,5,7,8,9,24,26 and partial 28. Capability 225 E6m3/d. Typical Flow 205-225 E6m3/d	Brooke Dillabough	USJR
13	8	Vetchland C/S - Station Maintenance (3 days). New	12/08/15	12/10/15	Potential IT/FT receipt restriction in Segments 1,2,3,4,5,7,8,9,24,26 and partial 28. Capability 225 E6m3/d, Typical Flow 205-225 E6m3/d.	Brooke Dillabough	USJR
14	21	NPS 42 Western Alberta Mainline Loop - Pipeline Modifications (5 days within window). Dates and Capacity Revised	01/01/16	01/30/16	Potential IT/FT delivery restriction at ALTBC. Capability 60 E6m3/d, Typical flow 55-60 E6m3/d.	Chris Pho	ALTBC
15	8	Nordegg C/S - Station Maintenance (12 days). New	01/11/16	01/22/16	Potential IT/FT receipt restriction in Segments 1,2,3,4,5,7,8,9,24,26 and partial 28. Capability 235 E6m3/d, Typical Flow 205-225 E6m3/d.	Brooke Dillabough	USJR
16	5	NPS 8 Simonette Lateral - Pipeline Modifications (4 days within window).	01/19/16	02/15/16	Nils required at Simonette, Simonette Sales, Deep Valley Creek Sales, Deep Valley Creek East and Maddenville. Typical flow 150 E3m3/d.	Ashley Lim	Local
17	6	Woodenhouse A & B C/S - Station Maintenance (7 days). New	01/26/16	01/31/16	Potential IT/FT delivery restriction in Segments 10,11 and 14. Capability 64 E6m3/d, Typical Flow 55-65 E6m3/d.	Andrea Watters	OSDA
18	11	NPS 20 Kirby Lateral Loop - Pipeline Modifications (5 days within window). Capacity Revised	02/01/16	02/15/16	Potential IT/FT delivery restriction in Segments 10, 11 & 14. Capability 64 E6m3/d. Typical flow 55 - 60 E6m3/d.	Rahim Ruda	OSDA
19	19	NPS 48 EAS Mainline Loop #4 - Pipeline Modifications (5 days within window).	02/14/16	02/28/16	Potential IT/FT delivery restriction at EGAT. Capability 136 E6m3/d.	Rahim Ruda	EGAT

C/S Compressor Station
M/S Meter Station
Shade - indicates new or changed
Inquiries? Contact info in outages above.

SEG		OUTAGE DESCRIPTION	DATES		RECEIPT/DELIVERY IMPACT	CONTAC	AREA
#			START	FINISH			
20	20	Jenner C/S- Station Maintenance (3 days). New	03/21/16	03/23/16	Potential IT/FT delivery restriction at EGAT. Capability 126 E6m3/d, Typical Flow 125-135 E6m3/d.	Damola Daramola	EGAT
21	10	NPS 24 Fort McKay Mainline - Pipeline Maintenance (2 days within window).	08/30/16	09/19/16	IT/FT delivery restriction required for Aspen Sales, Wapasu Creek Sales, Kearl Sales and Firebag Sales meter stations. Capability = 8300 E3m3/d. Typical flow 10000 to 12000 E3m3/d.	Andrea Watters	OSDA
22	10	NPS 30 Fort McKay Mainline - Pipeline Maintenance (2 days within window)	08/30/16	09/19/16	IT/FT delivery restriction required for Horizon Sales, Aurora Sales, Aurora # 2 Sales, Jackpine Creek Sales, Aspen Sales, Wapasu Creek Sales, Kearl Sales and Firebag Sales meter stations. Capability = 13000 E3m3/d. Typical flow 15000 to 16000 E3m3/d.	Andrea Watters	OSDA

C/S Compressor Station
M/S Meter Station
Shade - indicates new or changed
Inquiries? Contact info in outages above.

EGAT - Eastern Gate (Empress/McNeill Borders)
ALTBC - Alberta/B.C. Border
FSCD - Firm Service Contract Demand