



Monthly Outage Forecast

November, 2015

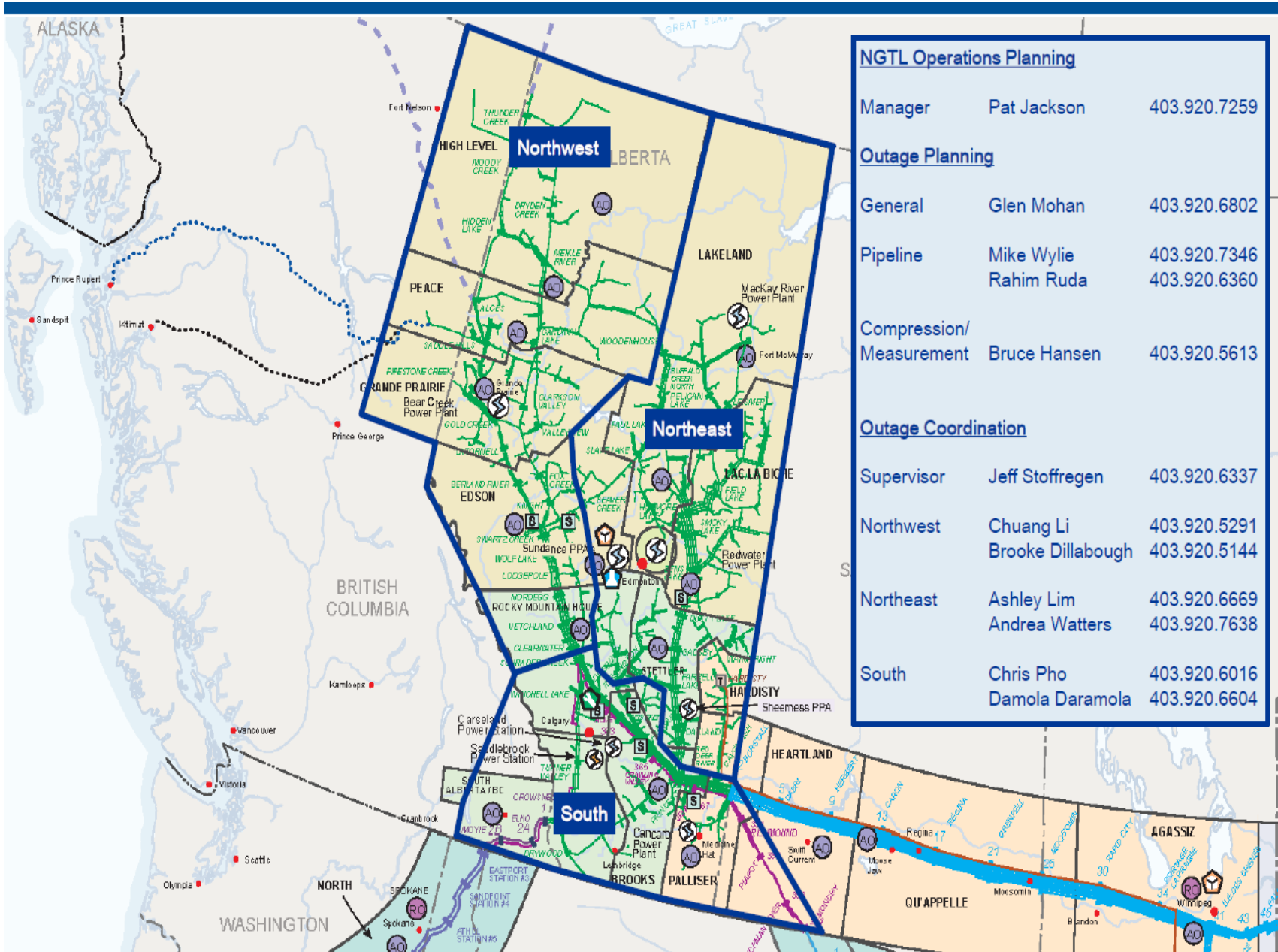
November Monthly Outage Forecast

The Monthly Outage Forecast is a tool provided by TransCanada to show the estimated operational capability of the System or area, and the estimated relative change in capability associated with planned outages.

This information is provided for informational purposes only and is not to be relied upon for any other purpose whatsoever. The information is based upon certain assumptions that may or may not be accurate, and therefore is subject to various risks and uncertainties. TransCanada shall not be liable for damages sustained as a result of any use or reliance on such information.

The Monthly Outage Forecast window has been extended to include a 12 month outage planning horizon. Please note, only known and planned outages at the time of publishing will be included in the Monthly Outage Forecast. As new outages are planned they will be added to subsequent MOF reports.

NGTL MAP

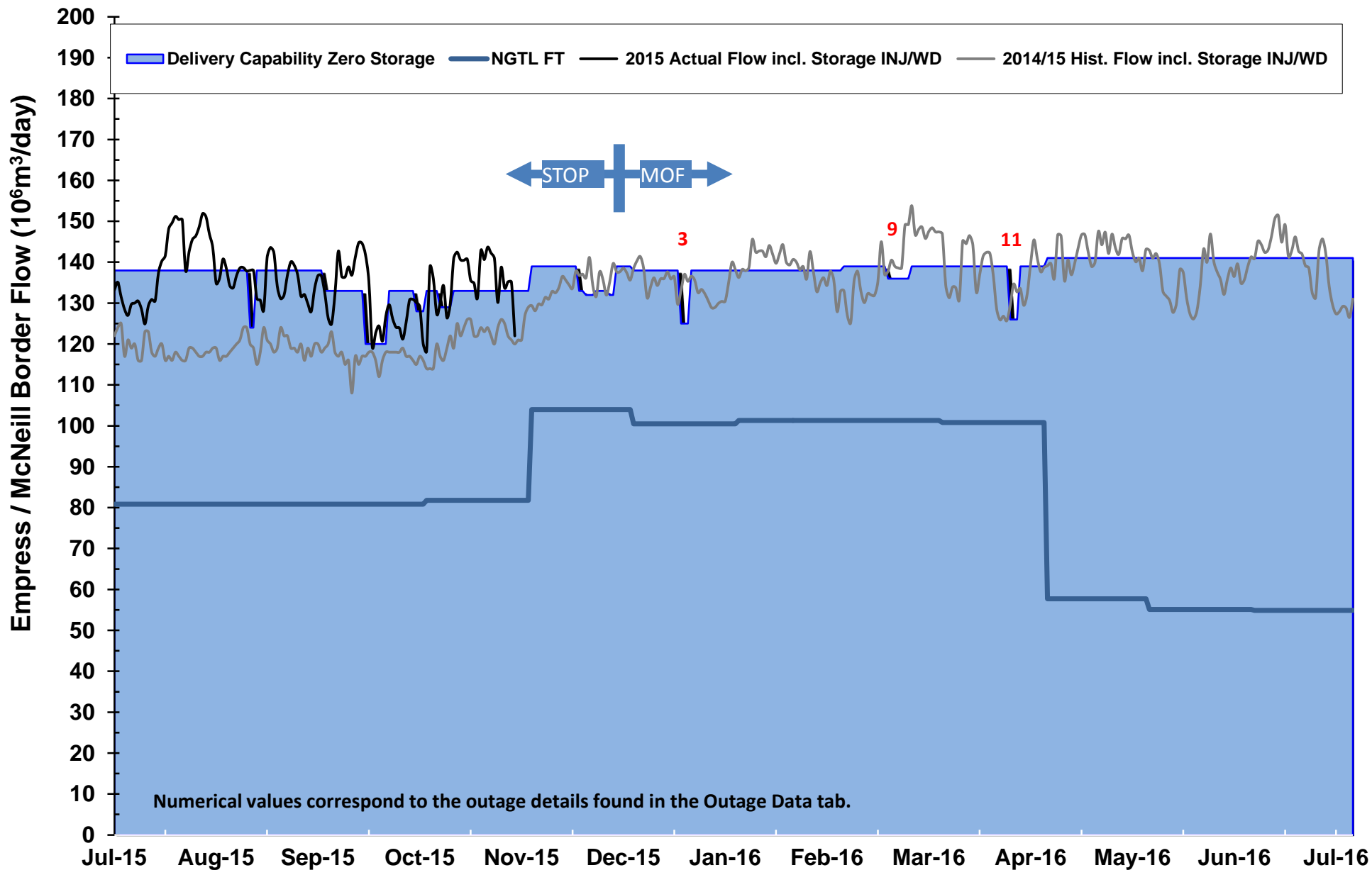


NGTL Operations Planning		
Manager	Pat Jackson	403.920.7259
Outage Planning		
General	Glen Mohan	403.920.6802
Pipeline	Mike Wylie	403.920.7346
	Rahim Ruda	403.920.6360
Compression/ Measurement	Bruce Hansen	403.920.5613
Outage Coordination		
Supervisor	Jeff Stoffregen	403.920.6337
Northwest	Chuang Li	403.920.5291
	Brooke Dillabough	403.920.5144
Northeast	Ashley Lim	403.920.6669
	Andrea Watters	403.920.7638
South	Chris Pho	403.920.6016
	Damola Daramola	403.920.6604

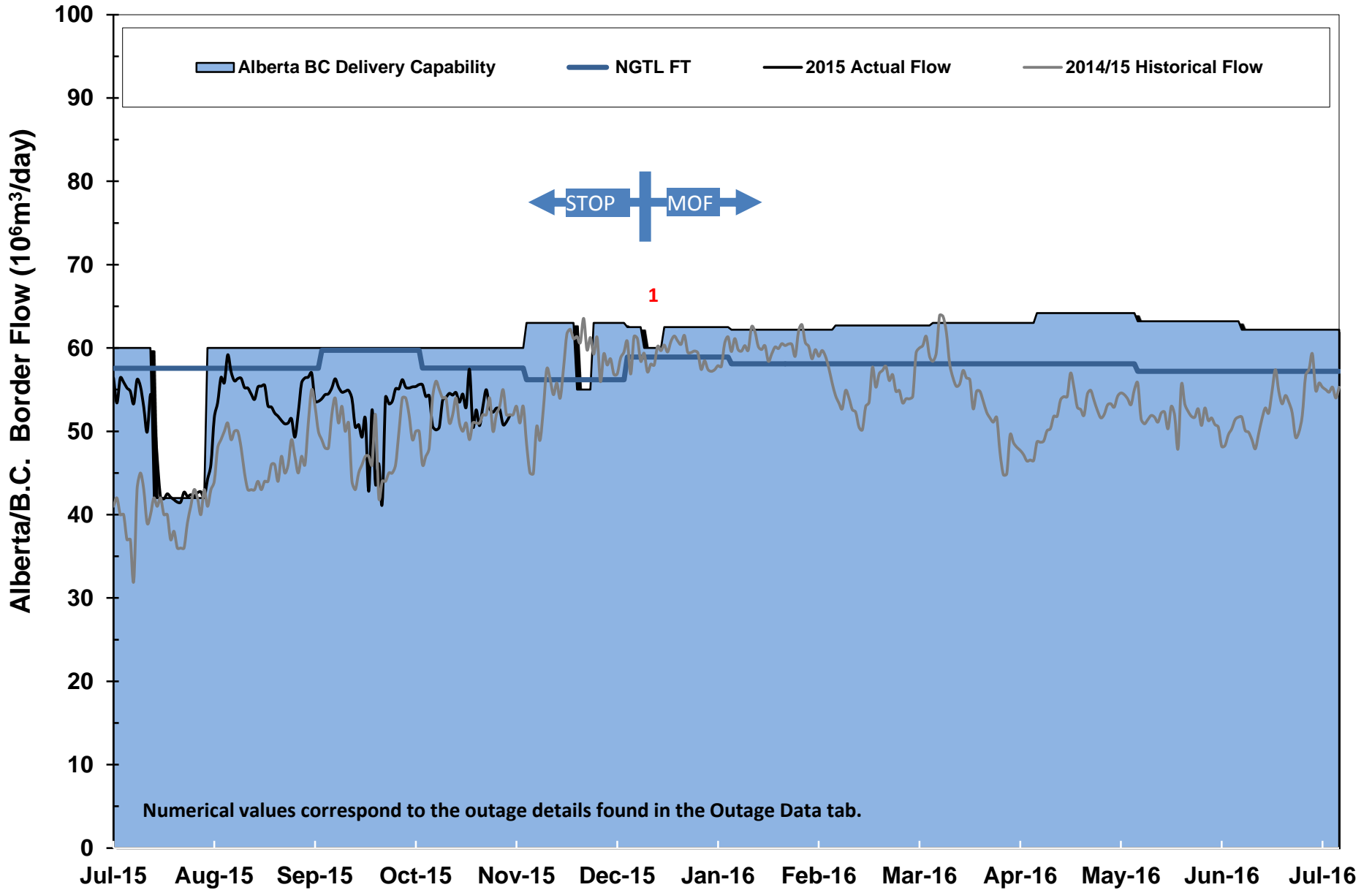
For NGTL System Facilities Segment codes please view link below

http://www.transcanada.com/customerexpress/docs/fh_system_maps/AB_System_Map_2015_Segments_Rev16.pdf

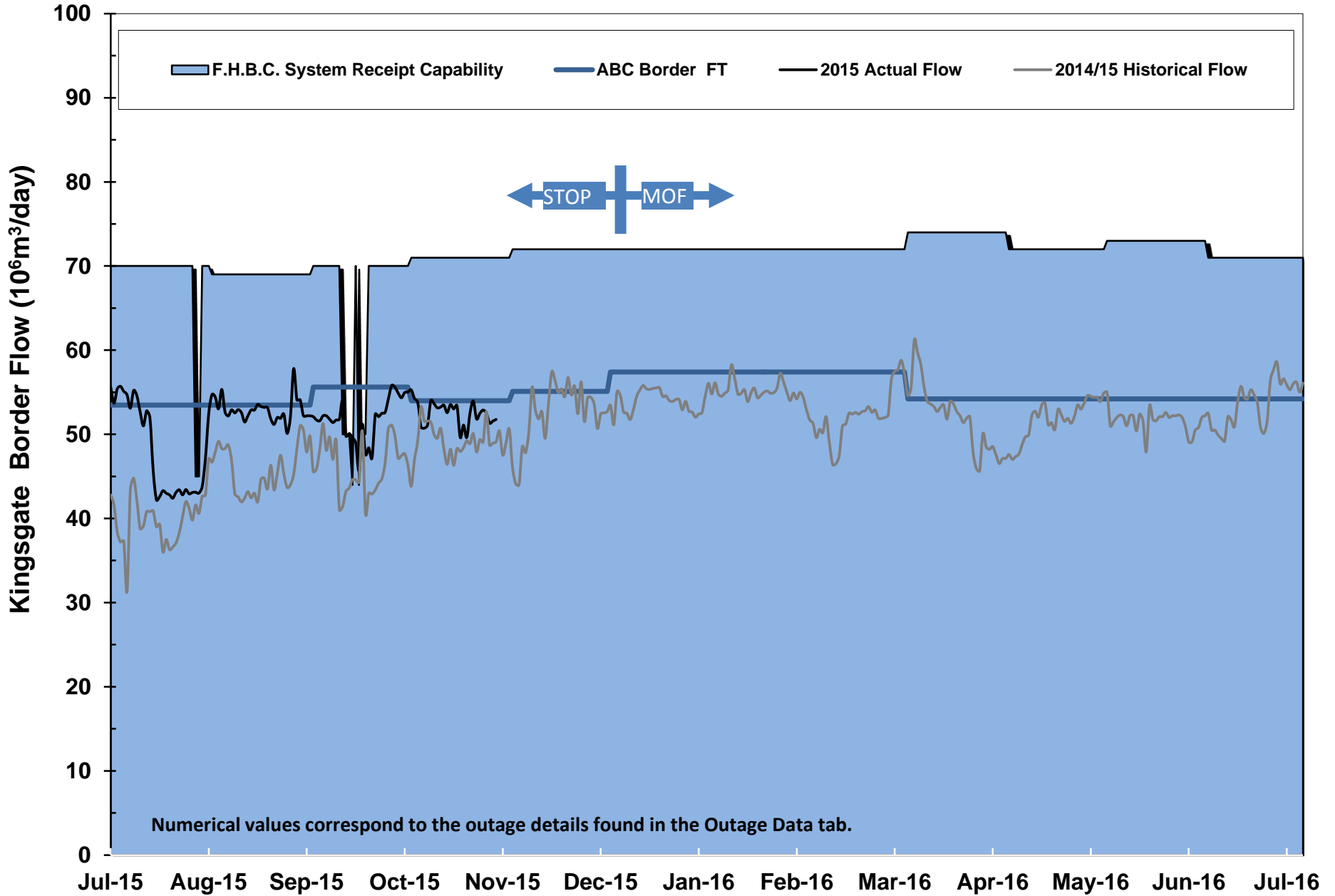
Empress/McNeill Border Outlook



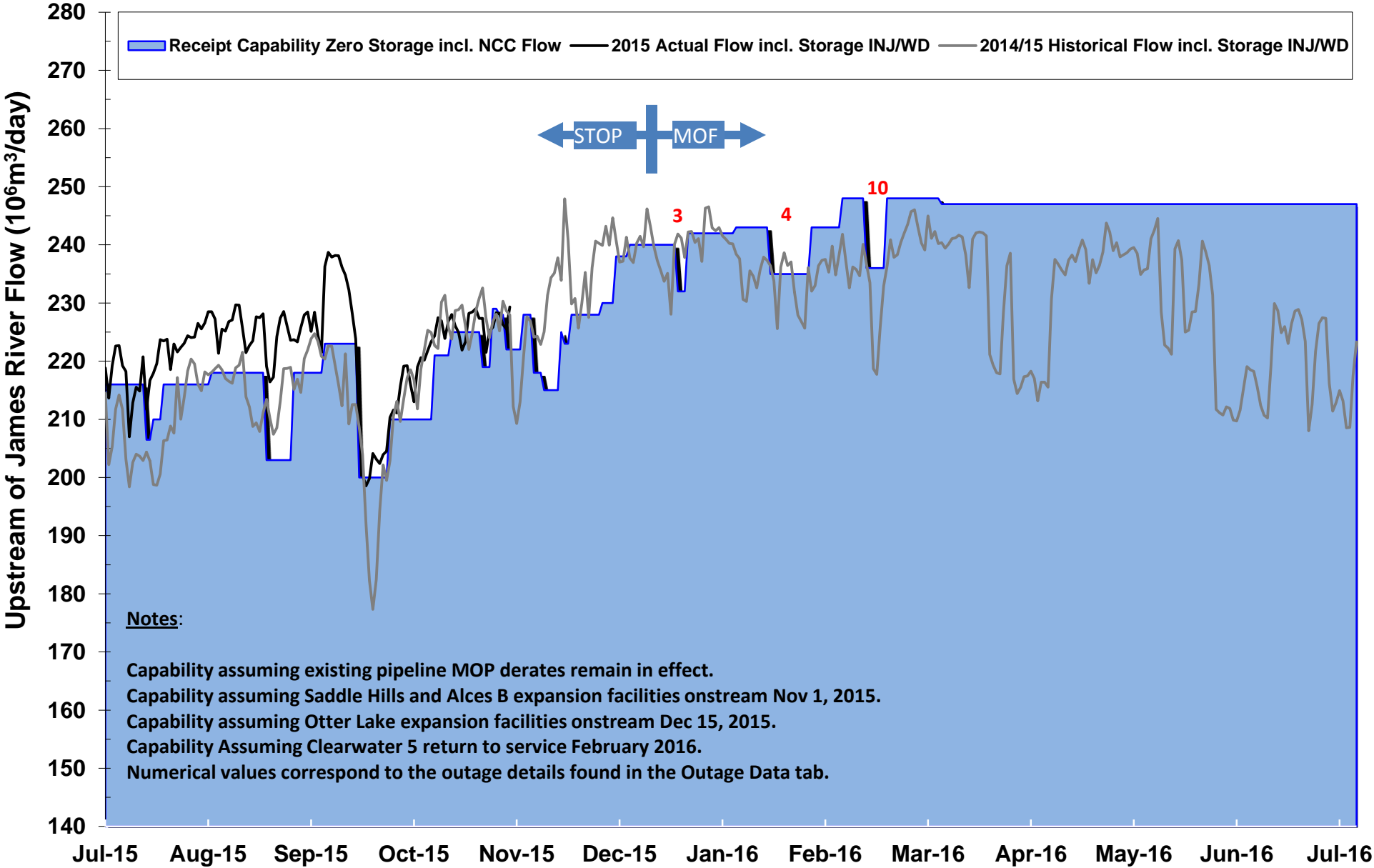
Alberta B.C. Border Outlook



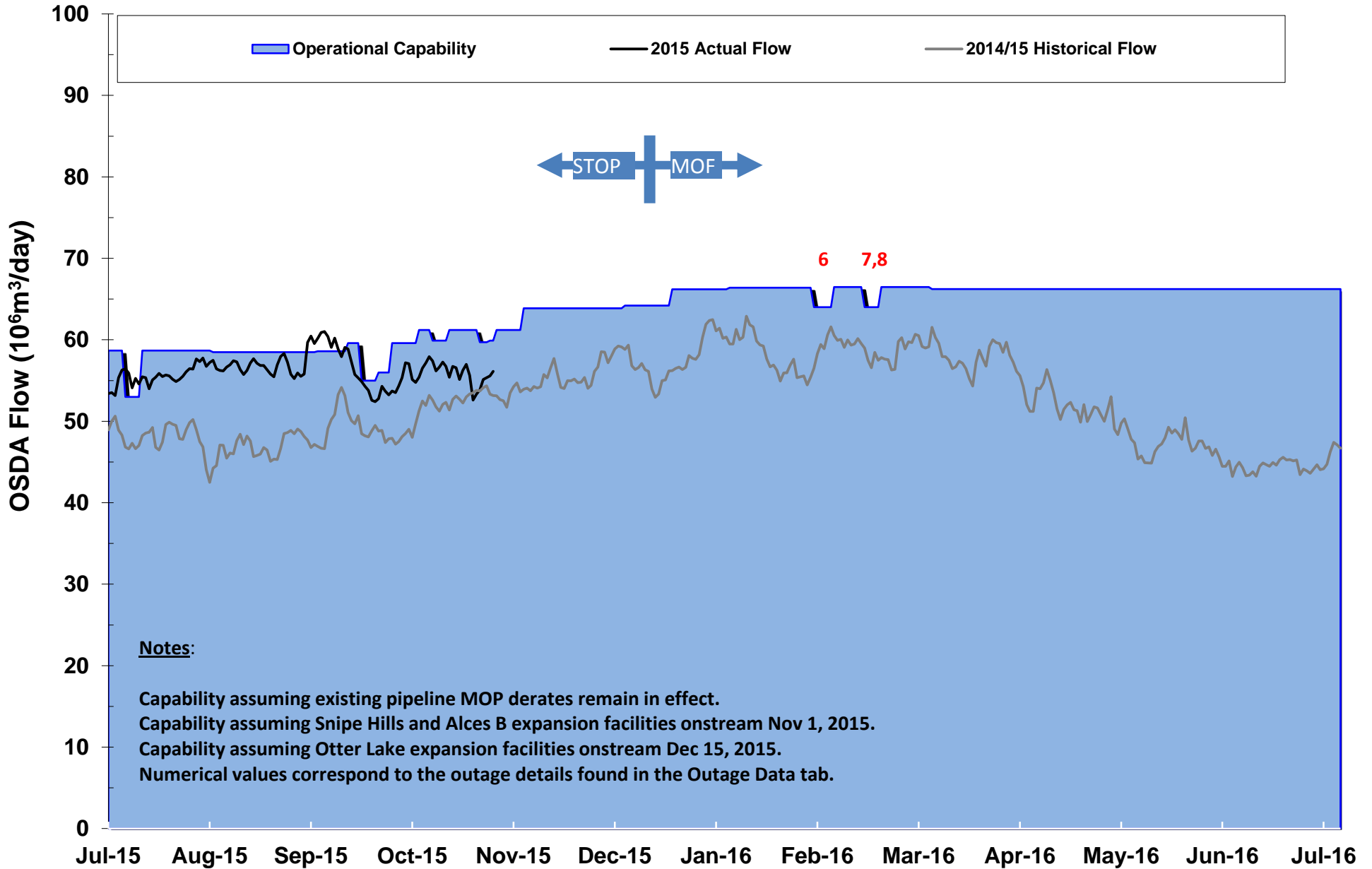
Kingsgate Border Outlook



Upstream of James River Outlook



Oil Sands Delivery Area (OSDA) Outlook Segments 10, 11,14



SEG	#	OUTAGE DESCRIPTION	DATES		RECEIPT/DELIVERY IMPACT	CONTAC	AREA
			START	FINISH			
1	21	NPS 42 Western Alberta Mainline Loop - Pipeline Modifications (6 days). Dates Revised	12/06/15	12/11/15	Potential IT/FT delivery restriction at ALTBC. Capability 60 E6m3/d, Typical flow 55-60 E6m3/d.	Chris Pho	ALTBC
2	1	NPS 12 Paddle Prairie Lateral - Pipeline Maintenance (3 days). Dates Revised	12/09/15	12/11/15	Nil required at Keg River East. Typical flow 35 E3m3/d. Potential IT/FT restriction required for Paddle Prairie, Paddle Prairie South, Boyer and Boyer East meter stations. Capability 0 to 400 E3m3/d. Typical flow 400 E3m3/d.	Brooke Dillabough	Local
3	21	Schrader Creek East/West C/S- Station Maintenance (3 days). Dates Revised	12/15/15	12/17/15	Potential IT/FT receipt restriction in Segments 1,2,3,4,5,7,8,9,24,26 and partial 28. Capability 232 E6m3/d, Typical Flow 215-235 E6m3/d. Potential IT/FT delivery restriction at EGAT. Capability 125 E6m3/d, Typical Flow 120-135 E6m3/d.	Chris Pho	USJR EGAT
4	8	Nordegg C/S - Station Maintenance (12 days).	01/11/16	01/22/16	Potential IT/FT receipt restriction in Segments 1,2,3,4,5,7,8,9,24,26 and partial 28. Capability 235 E6m3/d, Typical Flow 215-235 E6m3/d.	Brooke Dillabough	USJR
5	5	NPS 8 Simonette Lateral - Pipeline Modifications (4 days within window).	01/19/16	02/15/16	Nils required at Simonette, Simonette Sales, Deep Valley Creek Sales, Deep Valley Creek East and Maddenville. Typical flow 150 E3m3/d.	Rahim Ruda	Local
6	6	Woodenhouse A & B C/S - Station Maintenance (7 days).	01/26/16	01/31/16	Potential IT/FT delivery restriction in Segments 10,11 and 14. Capability 64 E6m3/d, Typical Flow 55-65 E6m3/d.	Andrea Watters	OSDA
7	11	NPS 20 Kirby Lateral Loop - Pipeline Modifications (5 days within window).	02/01/16	02/15/16	Potential IT/FT delivery restriction in Segments 10, 11 & 14. Capability 64 E6m3/d. Typical flow 55 - 60 E6m3/d.	Rahim Ruda	OSDA
8	12	NPS 16 Kirby Lateral Loop - Pipeline Modifications (5 days within window). New	02/01/16	02/15/16	Potential IT/FT delivery restriction in Segments 10, 11 & 14. Capability 66 E6m3/d. Typical flow 55 - 60 E6m3/d.	Rahim Ruda	OSDA
9	19	NPS 48 EAS Mainline Loop #4 - Pipeline Modifications (7 days within window). Dates and duration revised	02/07/16	02/28/16	Potential IT/FT delivery restriction at EGAT. Capability 136 E6m3/d.	Rahim Ruda	EGAT
10	8	Swartz Creek C/S - Station Maintenance (6 days). New	02/08/16	02/13/16	Potential IT/FT receipt restriction in Segments 1,2,3,4,5,7,8,9,24,26 and partial 28. Capability 236 E6m3/d, Typical Flow 215-235 E6m3/d.	Brooke Dillabough	USJR

C/S Compressor Station

M/S Meter Station

Shade - indicates new or changed

Inquiries? Contact info in outages above.

EGAT - East Gate (Empr/McNeill)

ALTBC - Alta/B.C. Border

USJR - Upstream of James River

OSDA - Oil Sands Delivery Area

	SEG	OUTAGE DESCRIPTION	DATES		RECEIPT/DELIVERY IMPACT	CONTAC	AREA
	#		START	FINISH			
11	20	Jenner C/S - Station Maintenance (3 days).	03/21/16	03/23/16	Potential IT/FT delivery restriction at EGAT. Capability 126 E6m3/d, Typical Flow 125-135 E6m3/d.	Damola Daramola	EGAT
12	16	NPS 10 Irish Lateral - Pipeline Modifications (4 days within window). New	06/15/16	06/30/16	Nil required at Irish and Morecambe . Typical flow 230 E3m3/d. Nil required at Elk Point and Landon Lake Lakes. Typical flow 30 E3m3/d.	Rahim Ruda	Local
13	24	NPS 10 Judy Creek Lateral - Pipeline Modifications (6 days within window). New	07/07/16	07/21/16	Nil required at Judy Creek and Virginia Hills. Typical flow 300 E3m3/d. Nil required at Sakwatamau Sales. Typical flow 0 E3m3/d.	Rahim Ruda	Local
14	15	NPS 8 Castor Lateral - Pipeline Modifications (6 days within window). New	07/15/16	07/31/16	Nil required at Castor. Typical flow 130 E3m3/d.	Rahim Ruda	Local
15	2	NPS 8 Dunvegan Lateral - Pipeline Modifications (6 days within window). New	08/15/16	08/30/16	Nil required at Dunvegan West and Dunvegan West #2. Typical flow 50 E3m3/d.	Rahim Ruda	Local
16	10	NPS 24 Fort McKay Mainline - Pipeline Maintenance (2 days within window).	08/30/16	09/19/16	IT/FT delivery restriction required for Aspen Sales, Wapasu Creek Sales, Kearn Sales and Firebag Sales meter stations. Capability = 8300 E3m3/d. Typical flow 10000 to 12000 E3m3/d.	Andrea Watters	OSDA
17	10	NPS 30 Fort McKay Mainline - Pipeline Maintenance (2 days within window)	08/30/16	09/19/16	IT/FT delivery restriction required for Horizon Sales, Aurora Sales, Aurora # 2 Sales, Jackpine Creek Sales, Aspen Sales, Wapasu Creek Sales, Kearn Sales and Firebag Sales meter stations. Capability = 13000 E3m3/d. Typical flow 15000 to 16000 E3m3/d.	Andrea Watters	OSDA

C/S Compressor Station

M/S Meter Station

Shade - indicates new or changed

Inquiries? Contact info in outages above.

EGAT - East Gate (Empr/McNeill)

ALTBC - Alta/B.C. Border

USJR - Upstream of James River

OSDA - Oil Sands Delivery Area