

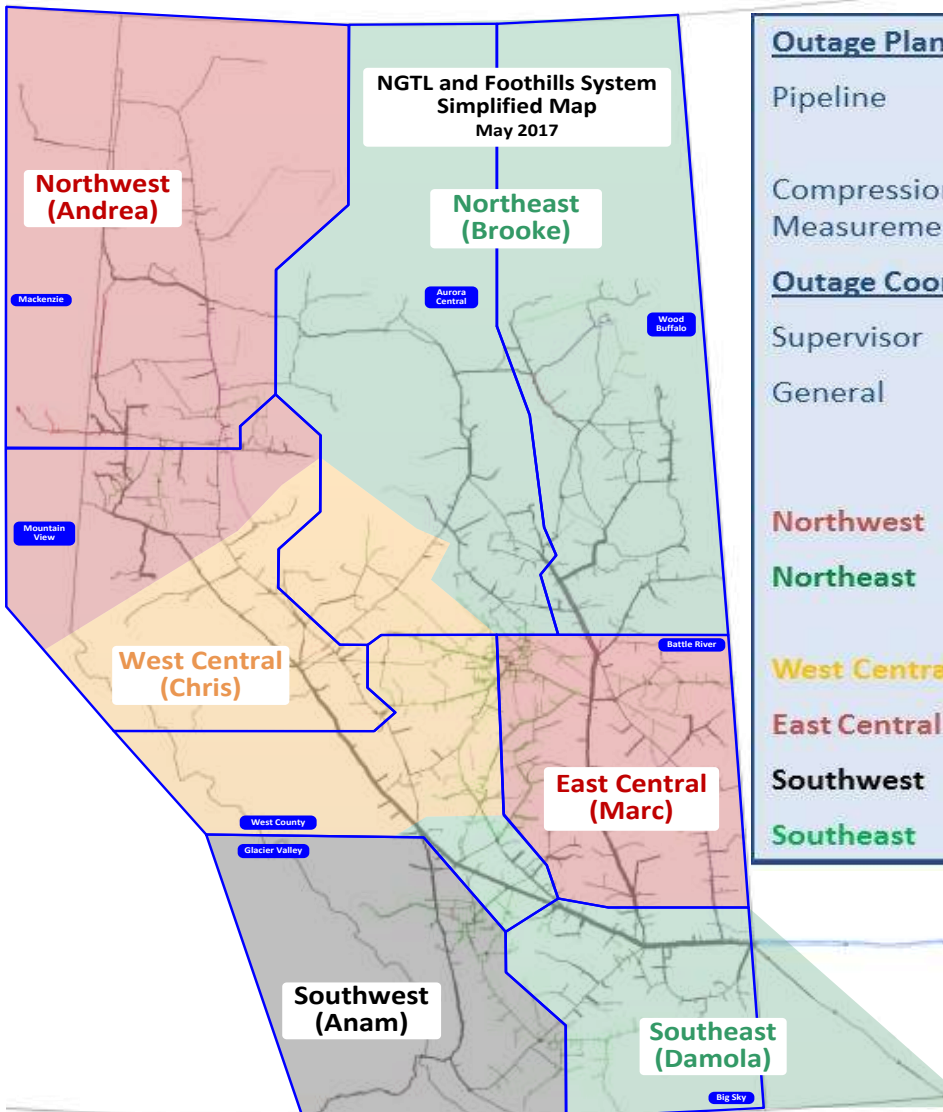


# NGTL System & Foothills Pipeline Monthly Outage Forecast July 2017



## July Monthly Outage Forecast

*The Monthly Outage Forecast is a tool provided by TransCanada to show the estimated operational capability. This information is provided for informational purposes only and is not to be relied upon for any other purpose whatsoever. The information is based upon certain assumptions that may or may not be accurate, and therefore is subject to various risks and uncertainties. TransCanada shall not be liable for damages sustained as a result of any use or reliance on such information. Please note, only known and planned outages at the time of publishing will be included in the Monthly Outage Forecast. As new outages are planned they will be added to subsequent MOF reports.*



**Outage Planning**

Pipeline	Mike Wylie	403.920.7346
	Rahim Ruda	403.920.6360

Compression/ Measurement	Bruce Hansen	403.920.5613
-----------------------------	--------------	--------------

**Outage Coordination**

Supervisor	Jeff Stoffregen	403.920.6337
------------	-----------------	--------------

General	Chuang Li	403.920.5291
	Ashley Lim	403.920.6669
	Kristi Eng	403.920.7749

<b>Northwest</b>	Andrea Watters	403.920.7638
------------------	----------------	--------------

<b>Northeast</b>	Brooke Penner (Dillabough)	403.920.5144
------------------	-------------------------------	--------------

<b>West Central</b>	Chris Pho	403.920.6016
---------------------	-----------	--------------

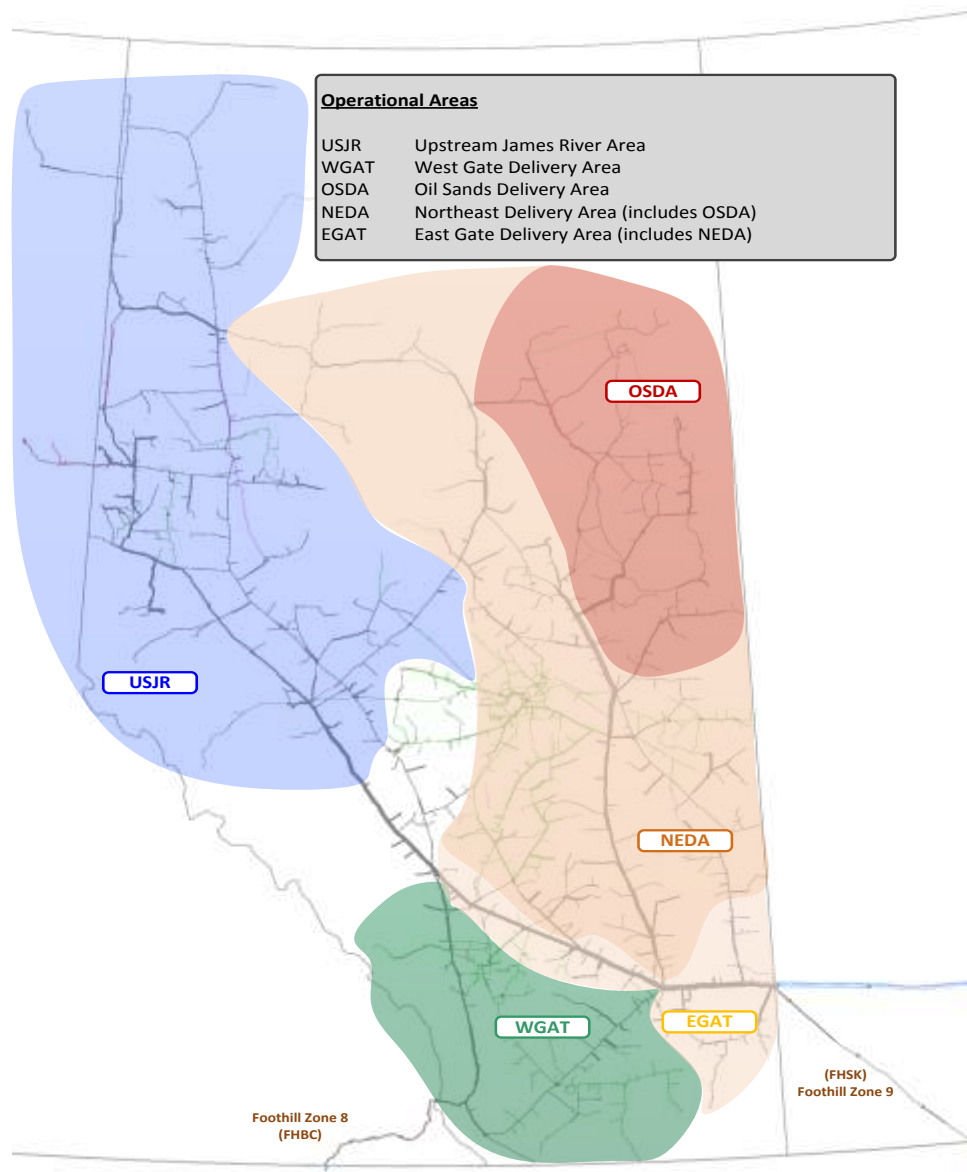
<b>East Central</b>	Marc Fattouche	587.933.4759
---------------------	----------------	--------------

<b>Southwest</b>	Anam M. Ali	403.920.5219
------------------	-------------	--------------

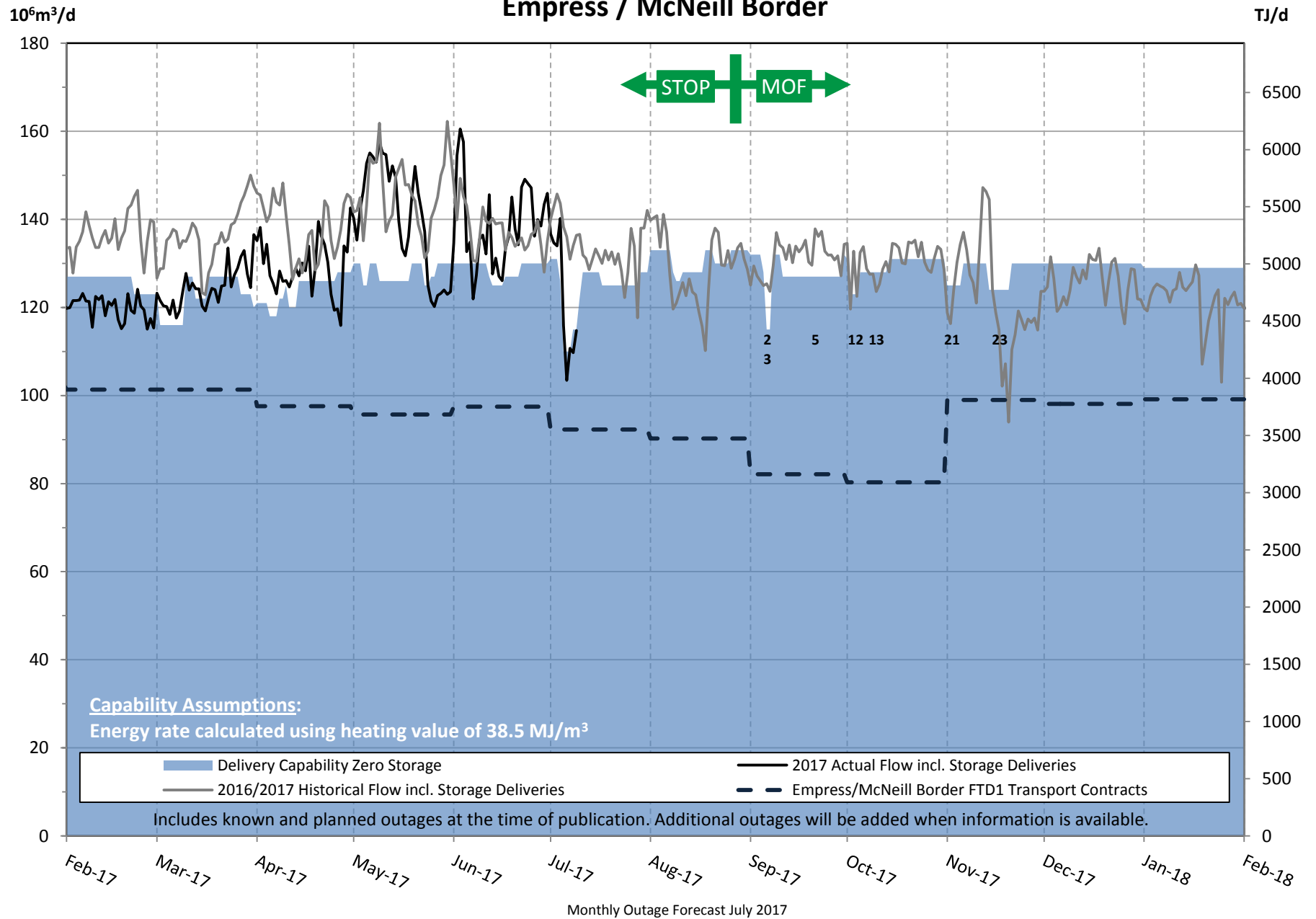
<b>Southeast</b>	Damola Daramola	403.920.6604
------------------	-----------------	--------------

**For NGTL System Facilities Segment codes please view link below**

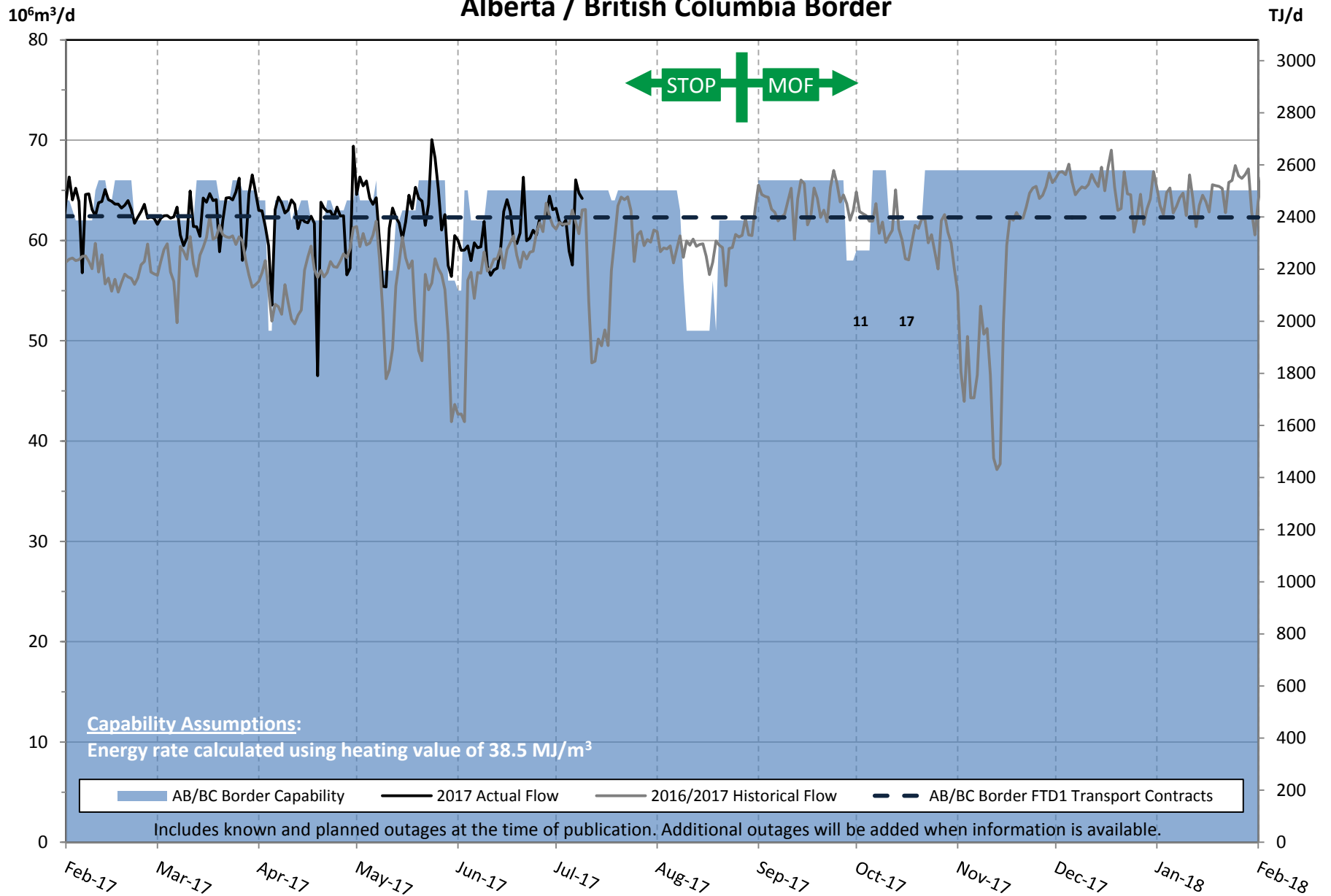
<http://www.tccustomerexpress.com/855.html>



# Empress / McNeill Border



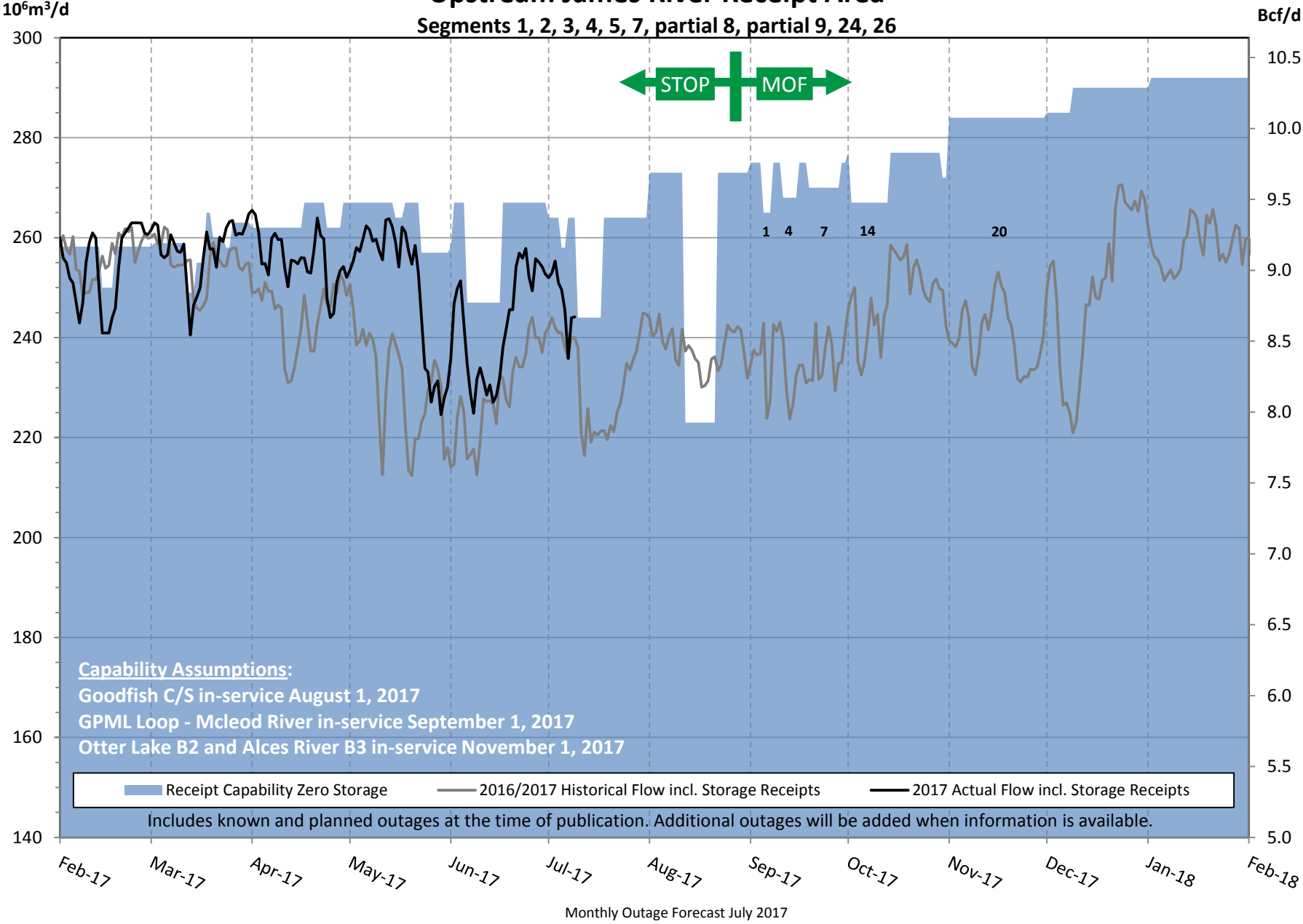
# Alberta / British Columbia Border



Monthly Outage Forecast July 2017

# Upstream James River Receipt Area

## Segments 1, 2, 3, 4, 5, 7, partial 8, partial 9, 24, 26

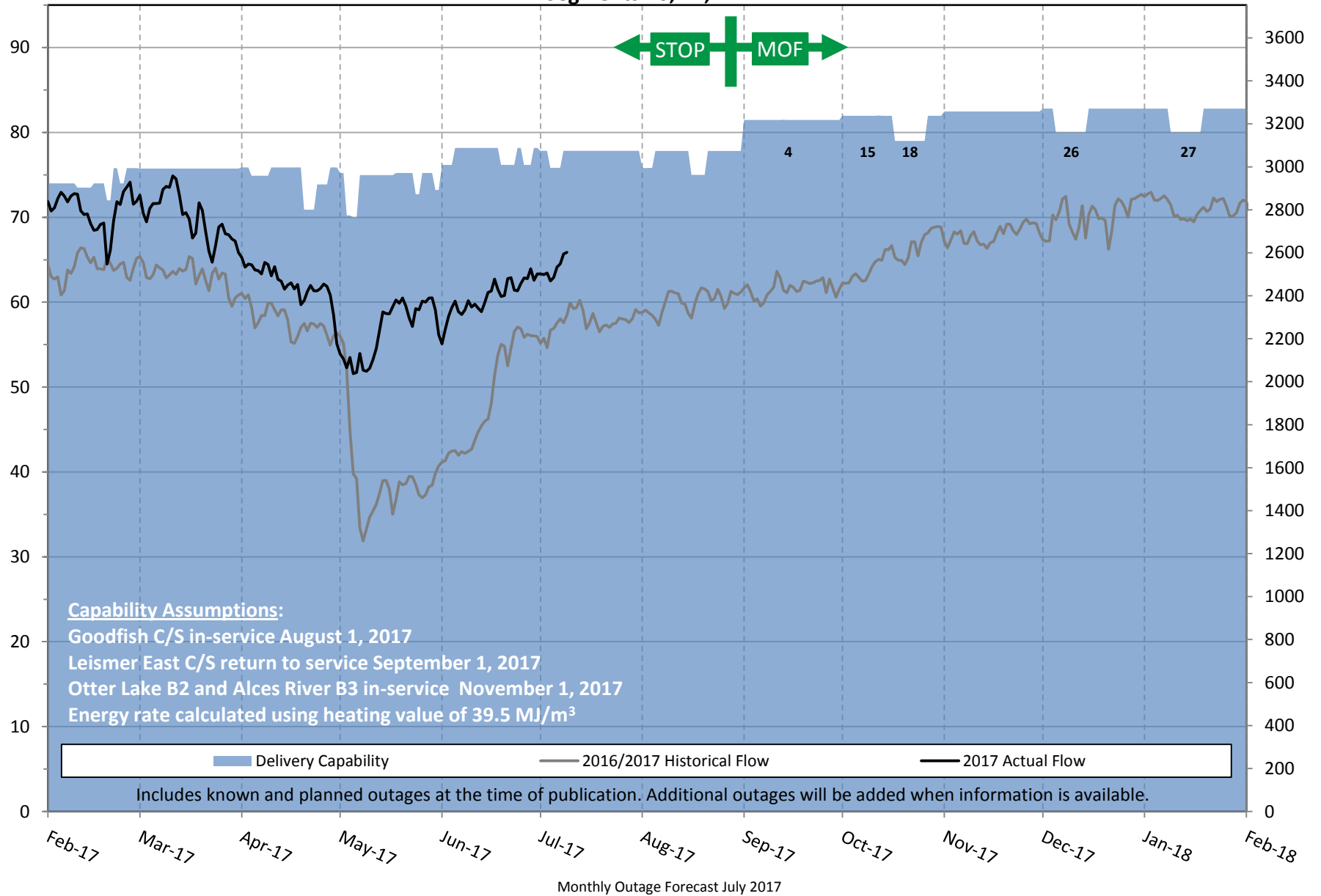


# Oil Sands Delivery Area

Segments 10, 11, 14

10<sup>6</sup>m<sup>3</sup>/d

TJ/d





## NGTL System & Foothills Pipeline - Monthly Outage Forecast July 2017

### Area Definitions

**USJR** Upstream James River Receipt Area: Groundbirch East, Gordondale, Big Eddy, January Creek, and Rat Creek West interconnects, and all receipt locations in Segments 1, 2, 3, 4, 5, 7, partial 8, partial 9, 24, 26.

**EGAT** East Gate Delivery Area: Empress, McNeill, Unity, Cold Lake, AeCo C, Warwick Southeast, Chancellor, Carbon, Severn Creek, and Crossfield interconnects, and all delivery locations in Segments 6, 10, 11, 12, 13, 14, 15, 16, 17, 18, 19, 20, partial 21, 22, 23, partial 28.

- **NEDA** North and East Delivery Area: Unity, Cold Lake, Warwick Southeast interconnects, and all delivery locations in Segments 6, 10, 11, 12, 13, 14, 15, 16, 17, 23, partial 28:
- **OSDA** Oil Sands Delivery Area: Cold Lake interconnect, and all delivery locations in Segments 10, 11, 14.

**WGAT** West Gate Delivery Area: Alberta B.C. and Alberta Montana interconnects (Delivery locations in partial Segment 21 and Segment 22 have temporarily been removed)

**FHBC** Foothills Zone 8

**FHSK** Foothills Zone 9

OUTAGE #	SEG #	OUTAGE DESCRIPTION	DATES		RECEIPT/DELIVERY IMPACT	CONTACT	AREA
			START	FINISH			
1	5	<b>Knight C/S</b> - Station Maintenance (3 days).	09/05/17	09/07/17	Potential FT receipt restriction in the Upstream James River Receipt Area. Capability 265 E6m3/d. Typical Flow 255-270 e6m3/d.	Chris Pho	USJR
2	19	<b>Jenner C/S</b> - Station Maintenance (3 days). <b>Capacity revised</b>	09/05/17	09/07/17	Potential IT delivery restriction in the East Gate Delivery Area. Empress/McNeill delivery Capability 128 E6m3/d. Typical Flow 125-135 e6m3/d.	Damola Daramola	EGAT
3	19	<b>NPS 42 Foothills Zone 6 Alberta</b> - Pipeline Maintenance (2 days). <b>New</b>	09/06/17	09/07/17	Probable IT and potential FT delivery restriction in the East Gate Delivery Area. Empress/McNeill Capability 115 E6m3/d. Typical Flow 125-135 E6m3/d.	Damola Daramola	EGAT
4	6	<b>Woodenhouse A1 &amp; B2 C/S</b> - Station Maintenance (5 days).	09/11/17	09/15/17	Potential FT receipt restriction in the Upstream James River Receipt Area. Capability 268 E6m3/d. Typical Flow 255-270 e6m3/d. Potential IT delivery restriction in the North and East Delivery Area. Capability 93 E6m3/d. Typical Flow 60-100 E6m3/d.	Brooke Penner (Dillabough)	USJR NEDA
5	18	<b>Beiseker C/S</b> - Station Maintenance (19 days). <b>Capacity revised</b>	09/11/17	09/29/17	Potential IT delivery restriction in the East Gate Delivery Area. Empress/McNeill delivery Capability 127 E6m3/d. Typical Flow 125-135 e6m3/d.	Damola Daramola	EGAT
6	6	<b>NPS 8 Mitsue Lateral</b> - Pipeline Maintenance (8 days).	09/14/17	09/21/17	Nil required at Mitsue, Overlea and Nipisi meter stations. Typical Flow 200 E3m3/d.	Brooke Penner (Dillabough)	Local
7	7	<b>NPS 42 Grande Prairie Mainline Loop</b> - Pipeline Modifications (10 days).	09/19/17	09/28/17	Potential FT receipt restriction in the Upstream James River Receipt Area. Capability 270 E6m3/d. Typical Flow 255-270 e6m3/d. Nil required at Mayberne #2 meter station. Typical Flow 550 E3m3/d.	Chris Pho	USJR Local
8	19	<b>NPS 42 Foothills Pipeline Zone 9</b> - Pipeline Maintenance (9 days).	09/21/17	09/29/17	Probable FT receipt restriction on Foothills Zone 9. Capability 28-40 E6m3/d. Typical Flow 40-45 E6m3/d.	Damola Daramola	FHSK
9	13	<b>NPS 16 Redwater Lateral Extension</b> - Pipeline Maintenance (6 days).	09/24/17	09/29/17	Nil required at Newbrook and Weasel Creek meter station. Typical Flow 20 E3m3/d	Marc Fattouche	Local
10	16	<b>Unity Border M/S</b> - Station Maintenance (4 days within window)	09/25/17	10/05/17	Nil required at Unity Border meter station. Typical Flow 3000 e3m3/d.	Chris Pho	Local
11	21	<b>NPS 36 Foothills Zone 7</b> - Pipeline Maintenance (8 days).	09/28/17	10/05/17	Potential FT delivery restriction in the West Gate Delivery Area. Alberta B. C. Capability 58 E6m3/d. Typical Flow 57-64 E6m3/d.	Damola Daramola	WGAT

C/S Compressor Station  
M/S Meter Station  
Light Shade Changed Entry  
Dark Shade New Entry

## NGTL System & Foothills Pipeline - Monthly Outage Forecast July 2017

### Area Definitions

<b>USJR</b>	Upstream James River Receipt Area: Groundbirch East, Gordondale, Big Eddy, January Creek, and Rat Creek West interconnects, and all receipt locations in Segments 1, 2, 3, 4, 5, 7, partial 8, partial 9, 24, 26.
<b>EGAT</b>	East Gate Delivery Area: Empress, McNeill, Unity, Cold Lake, Aeco C, Warwick Southeast, Chancellor, Carbon, Severn Creek, and Crossfield interconnects, and all delivery locations in Segments 6, 10, 11, 12, 13, 14, 15, 16, 17, 18, 19, 20, partial 21, 22, 23, partial 28.
	• <b>NEDA</b> North and East Delivery Area: Unity, Cold Lake, Warwick Southeast interconnects, and all delivery locations in Segments 6, 10, 11, 12, 13, 14, 15, 16, 17, 23, partial 28:
	• <b>OSDA</b> Oil Sands Delivery Area: Cold Lake interconnect, and all delivery locations in Segments 10, 11, 14.
<b>WGAT</b>	West Gate Delivery Area: Alberta B.C. and Alberta Montana interconnects (Delivery locations in partial Segment 21 and Segment 22 have temporarily been removed)
<b>FHBC</b>	Foothills Zone 8
<b>FHSK</b>	Foothills Zone 9

OUTAGE #	SEG #	OUTAGE DESCRIPTION	DATES		RECEIPT/DELIVERY IMPACT	CONTACT	AREA
			START	FINISH			
12	18	<b>Crawling Valley C/S</b> - Station Maintenance (3 days).	10/02/17	10/04/17	Potential IT delivery restriction in the East Gate Delivery Area. Empress/McNeill delivery Capability 124 E6m3/d. Typical Flow 125-135 e6m3/d.	Damola Daramola	EGAT
13	18	<b>Beiseker #2</b> - Station Maintenance (12 days).	10/02/17	10/13/17	Potential IT delivery restriction in the East Gate Delivery Area. Empress/McNeill delivery Capability 126 E6m3/d. Typical Flow 125-135 e6m3/d.	Damola Daramola	EGAT
14	8	<b>Nordegg C/S</b> - Station Maintenance (10 days). <b>Duration Revised</b>	10/02/17	10/13/17	Potential FT receipt restriction in the Upstream James River Receipt Area. Capability 267 E6m3/d. Typical Flow 255-270 e6m3/d. Probable IT delivery restriction in the East Gate Delivery Area.	Chris Pho	USJR EGAT
15	6	<b>Paul Lake B2 C/S</b> - Station Maintenance (4 days).	10/10/17	10/13/17	Potential FT receipt restriction in the Upstream James River Receipt Area. Capability 270 E6m3/d. Typical Flow 255-270 E6m3/d. Potential IT delivery restriction in the North and East Delivery Area. Capability 95 E6m3/d. Typical Flow 60-100 E6m3/d.	Brooke Penner (Dillabough)	USJR NEDA
16	16	<b>NPS 6 Clear Hills Lateral</b> - Pipeline Modifications (4 days). <b>New</b>	10/11/17	10/14/17	Nil required at Clear Hills meter station. Typical Flow 25 E3m3/d.	Rahim Ruda	Local
17	6	<b>NPS 42 Western Alberta System Mainline Loop</b> - Pipeline Maintenance (11 days).	10/11/17	10/21/17	Potential FT delivery restriction in the West Gate Delivery Area. Alberta B. C. Capability 62 E6m3/d. Typical Flow 57-64 E6m3/d.	Damola Daramola	WGAT
18	10	<b>NPS 16 Pelican Mainline</b> - Pipeline Modifications (10 days).	10/17/17	10/26/17	Potential IT delivery restriction in the Oil Sands Delivery Area. Capability 79 E6m3/d. Typical Flow 65-75 E6m3/d.	Brooke Penner (Dillabough)	OSDA
19	23	<b>NPS 8 Wainwright East Lateral</b> - Pipeline Modifications (7 days).	10/24/17	10/30/17	Nil required at Wainwright East meter station. Typical Flow 35 E3m3/d.	Marc Fattouche	Local
20	8	<b>Clearwater #5</b> - Unit Modifications (40 days).	10/30/17	12/08/17	Probable IT receipt restriction in the Upstream James River Receipt Area. Capability 284 E6m3/d. Typical Flow 255-290 e6m3/d (including storage withdrawal). Potential IT delivery restriction in the East Gate Delivery Area.	Chris Pho	USJR EGAT
21	19	<b>NPS 36 Eastern Alberta System Mainline Loop #2</b> - Pipeline Maintenance (5 days).	11/01/17	11/05/17	Potential IT delivery restriction in the East Gate Delivery Area. Empress/McNeill delivery Capability 125 E6m3/d. Typical Flow 125-135 E6m3/d.	Damola Daramola	EGAT
22	12	<b>NPS 10 Hairy Hills Lateral</b> - Pipeline Modifications (7 days).	11/01/17	11/06/17	Nil required at Hairy Hill meter station. Typical Flow 55 E3m3/d.	Marc Fattouche	Local

**C/S** Compressor Station  
**M/S** Meter Station  
**Light Shade** Changed Entry  
**Dark Shade** New Entry

## NGTL System & Foothills Pipeline - Monthly Outage Forecast July 2017

### Area Definitions

**USJR** Upstream James River Receipt Area: Groundbirch East, Gordondale, Big Eddy, January Creek, and Rat Creek West interconnects, and all receipt locations in Segments 1, 2, 3, 4, 5, 7, partial 8, partial 9, 24, 26.

**EGAT** East Gate Delivery Area: Empress, McNeill, Unity, Cold Lake, Aeco C, Warwick Southeast, Chancellor, Carbon, Severn Creek, and Crossfield interconnects, and all delivery locations in Segments 6, 10, 11, 12, 13, 14, 15, 16, 17, 18, 19, 20, partial 21, 22, 23, partial 28.

- **NEDA** North and East Delivery Area: Unity, Cold Lake, Warwick Southeast interconnects, and all delivery locations in Segments 6, 10, 11, 12, 13, 14, 15, 16, 17, 23, partial 28:
- **OSDA** Oil Sands Delivery Area: Cold Lake interconnect, and all delivery locations in Segments 10, 11, 14.

**WGAT** West Gate Delivery Area: Alberta B.C. and Alberta Montana interconnects (Delivery locations in partial Segment 21 and Segment 22 have temporarily been removed)

**FHBC** Foothills Zone 8

**FHSK** Foothills Zone 9

OUTAGE #	SEG #	OUTAGE DESCRIPTION	DATES		RECEIPT/DELIVERY IMPACT	CONTACT	AREA
			START	FINISH			
23	19	<b>NPS 34 Eastern Alberta System Mainline Loop &amp; Central Alberta System Mainline</b> - Pipeline Maintenance (7 days).	11/14/17	11/20/17	Potential IT delivery restriction in the East Gate Delivery Area. Empress/McNeill Capability 124 E6m3/d. Typical Flow 125-135 E6m3/d.	Damola Daramola	EGAT
24	16	<b>NPS 8 Kessler Lateral</b> - Pipeline Modifications (6 days).	11/20/17	11/25/17	Nil required at Provost Kessler and Provost West meter stations. Typical Flow 130 E3m3/d.	Marc Fattouche	Local
25	19	<b>NPS 10 Iddesleigh South Lateral</b> - Pipeline Modifications (4 days).	12/04/17	12/07/17	Nil required at Iddesleigh South meter station. Typical Flow 115 E3m3/d.	Rahim Ruda	Local
26	10	<b>NPS 16 Pelican Mainline</b> - Pipeline Modifications (10 days).	12/05/17	12/14/17	Potential IT delivery restriction in the Oil Sands Delivery Area. Capability 80 E6m3/d. Typical Flow 65-75 E6m3/d.	Brooke Penner (Dillabough)	OSDA
27	10	<b>NPS 16 Pelican Mainline</b> - Pipeline Modifications (10 days).	01/09/18	01/18/18	Potential IT delivery restriction in the Oil Sands Delivery Area. Capability 80 E6m3/d. Typical Flow 65-75 E6m3/d.	Brooke Penner (Dillabough)	OSDA
<b>OUTAGES TO BE REMOVED FROM MONTHLY OUTAGE FORECAST - CANCELLATIONS, DEFERRALS, REVISED IMPACTS</b>							
	7	<b>NPS 36 Grande Prairie Mainline Loop</b> - Pipeline Modifications (5 days).	08/30/17	09/03/17	Deferred until further notice	Andrea Watters	USJR
	6	<b>NPS 42 North Central Corridor</b> - Pipeline Maintenance (7 days)	09/10/17	09/17/17	Deferred until further notice	Andrea Watters	USJR

C/S Compressor Station  
M/S Meter Station  
Light Shade Changed Entry  
Dark Shade New Entry