

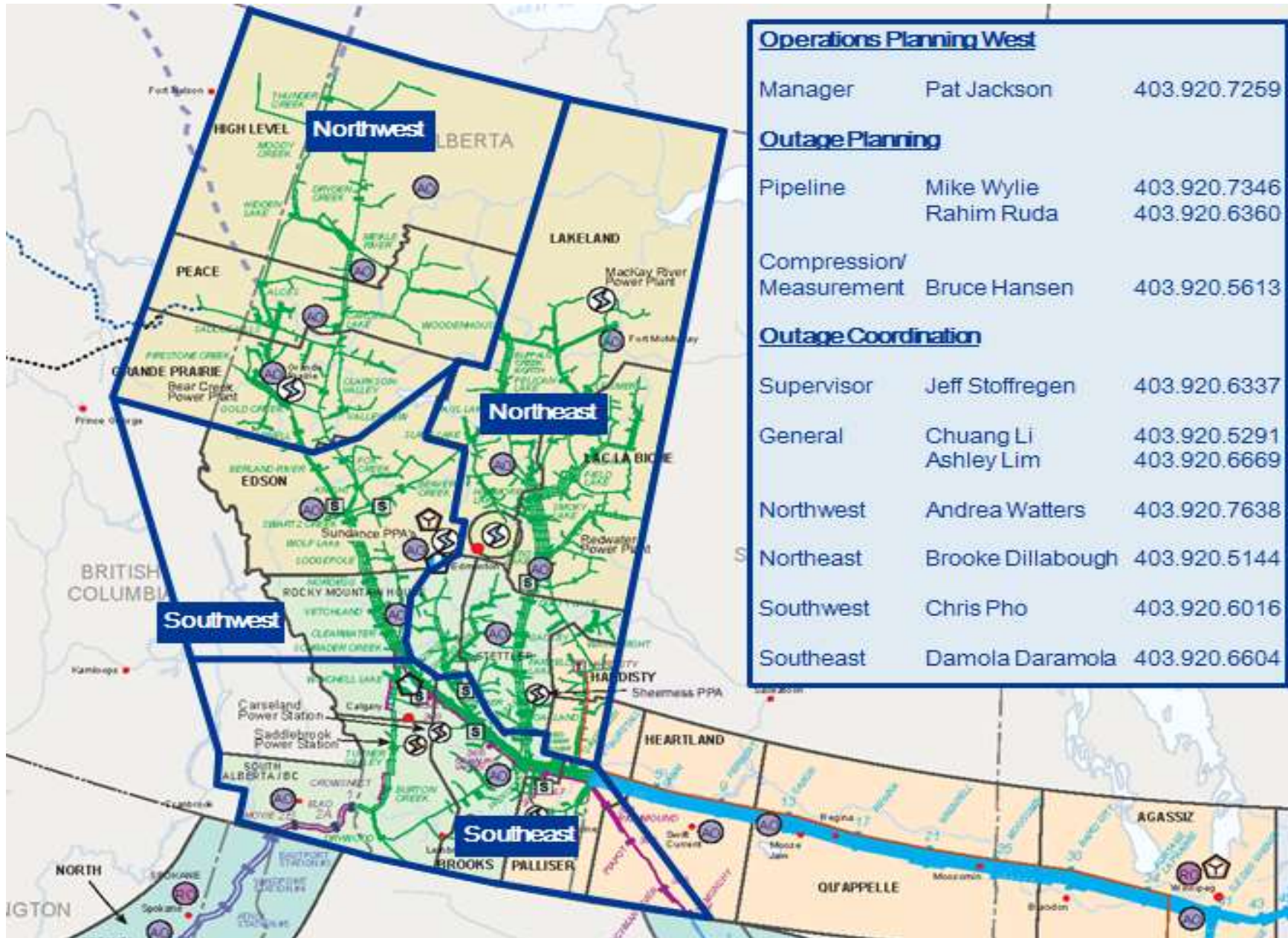


# Monthly Outage Forecast

## January, 2016

## January Monthly Outage Forecast

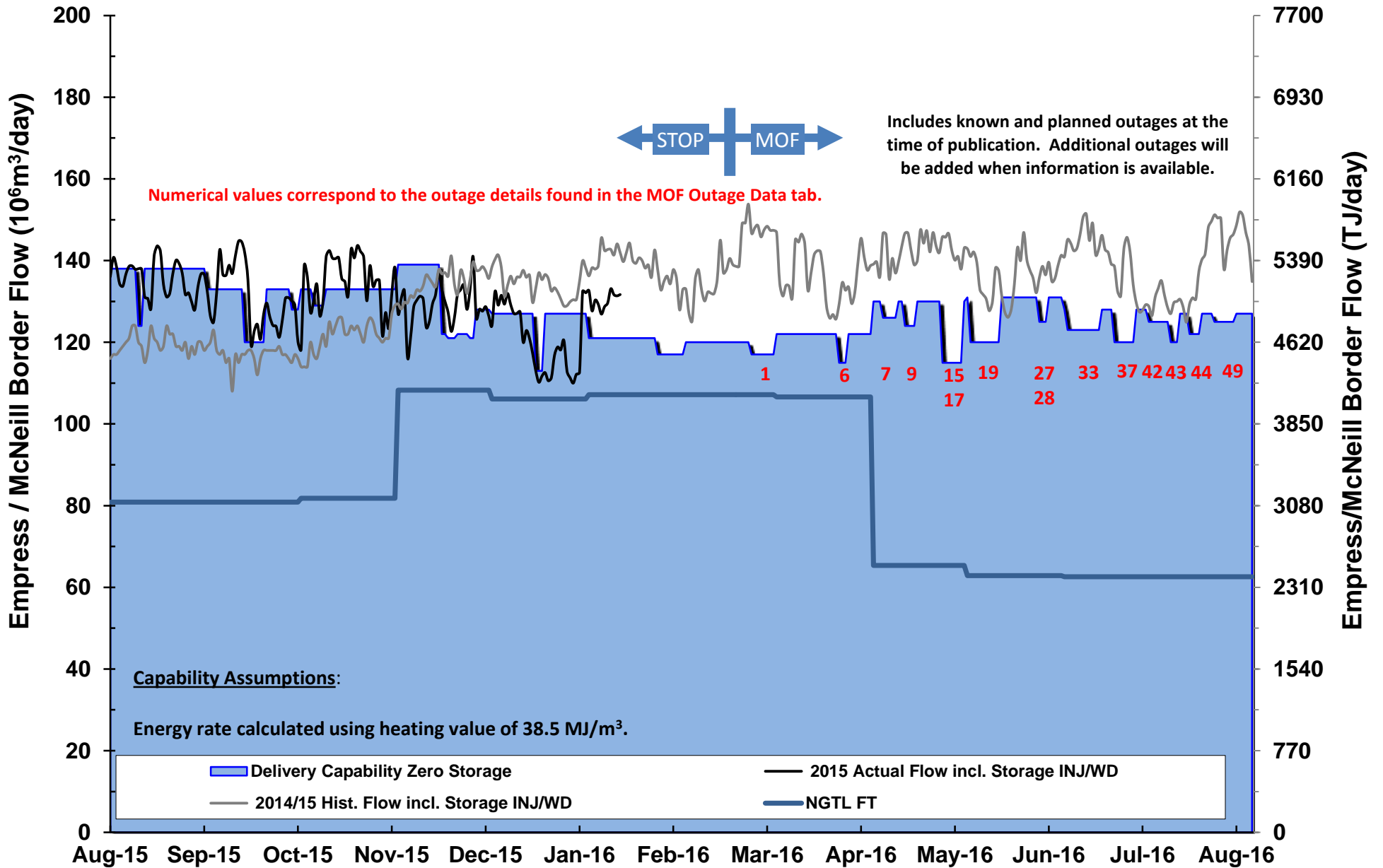
*The Monthly Outage Forecast is a tool provided by TransCanada to show the estimated operational capability. This information is provided for informational purposes only and is not to be relied upon for any other purpose whatsoever. The information is based upon certain assumptions that may or may not be accurate, and therefore is subject to various risks and uncertainties. TransCanada shall not be liable for damages sustained as a result of any use or reliance on such information. The Monthly Outage Forecast window has been extended to include a 12 month outage planning horizon. Please note, only known and planned outages at the time of publishing will be included in the Monthly Outage Forecast. As new outages are planned they will be added to subsequent MOF reports.*



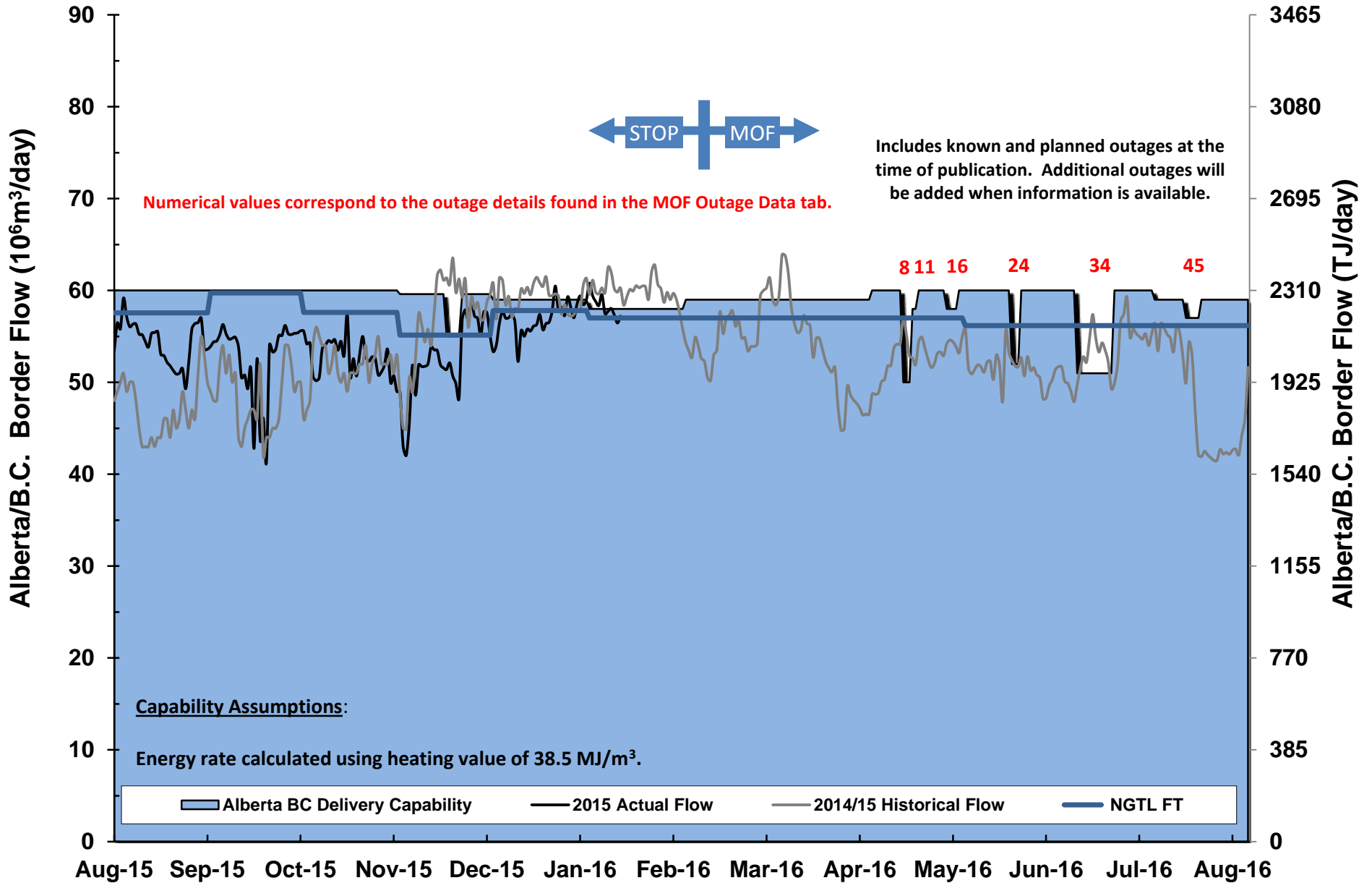
For NGTL System Facilities Segment codes please view link below

[http://www.transcanada.com/customerexpress/docs/fh\\_system\\_maps/AB\\_System\\_Map\\_2015\\_Segments\\_Rev16.pdf](http://www.transcanada.com/customerexpress/docs/fh_system_maps/AB_System_Map_2015_Segments_Rev16.pdf)

# Empress/McNeill Border



# Alberta/B.C. Border

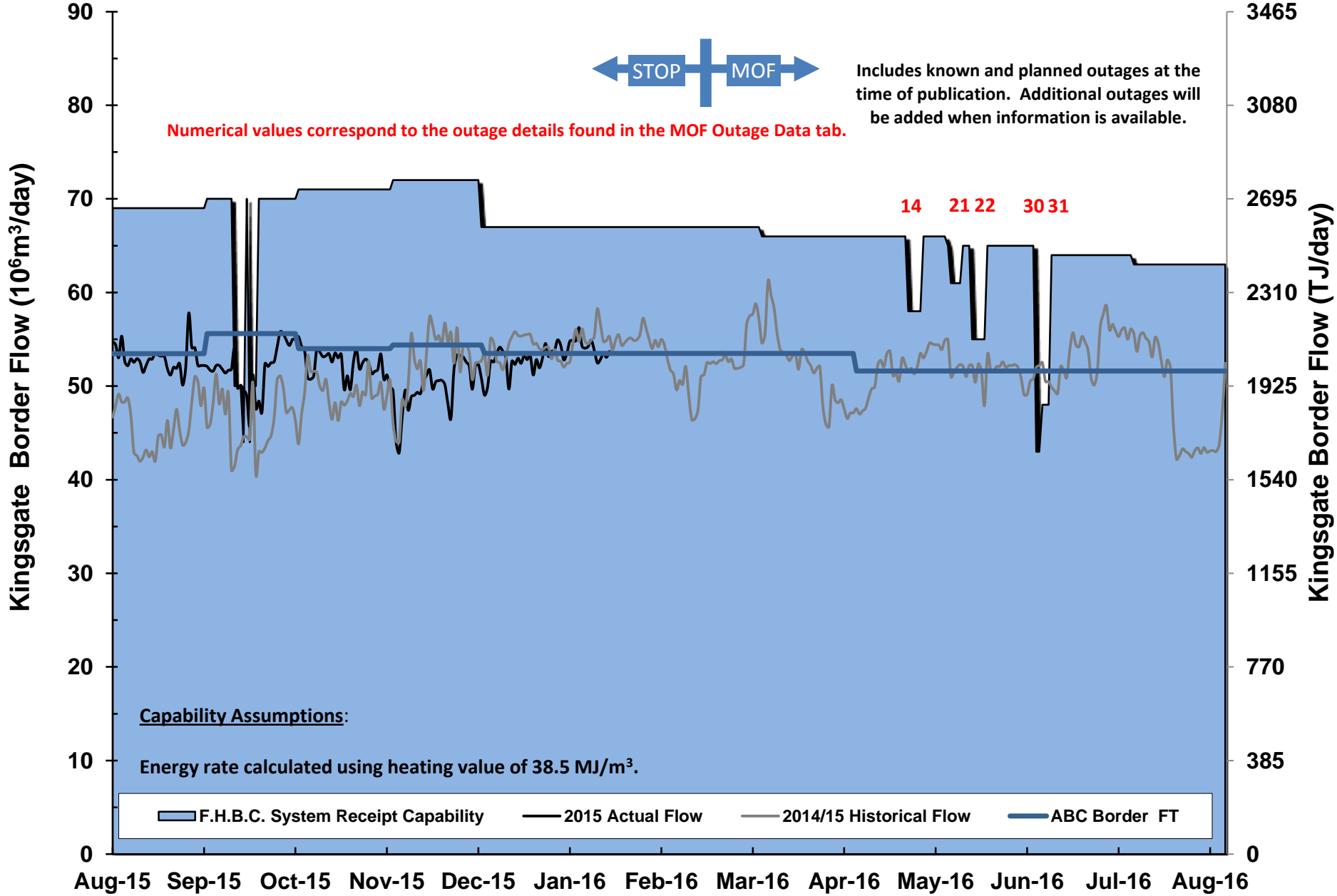


# Kingsgate Border



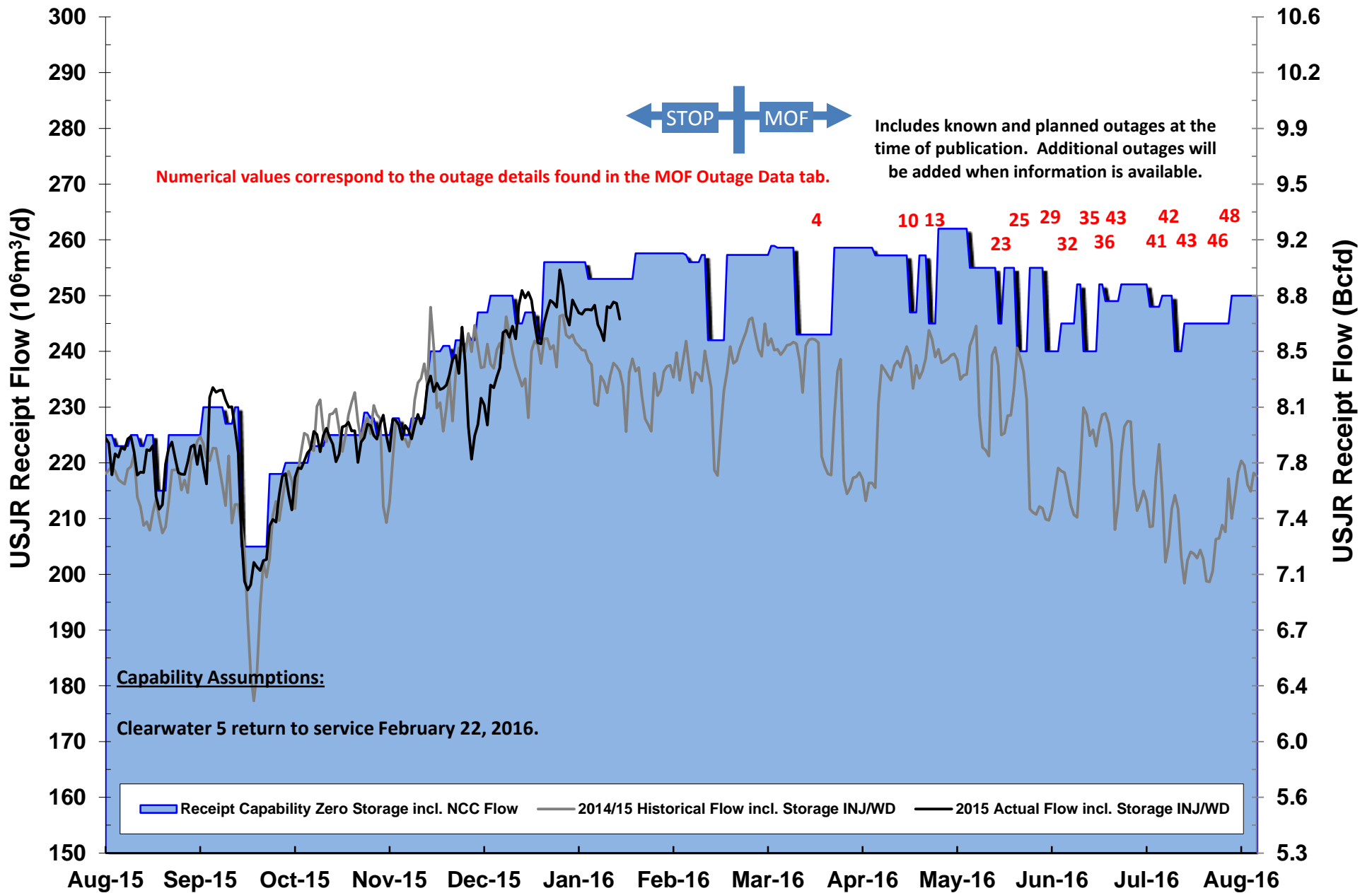
Includes known and planned outages at the time of publication. Additional outages will be added when information is available.

Numerical values correspond to the outage details found in the MOF Outage Data tab.



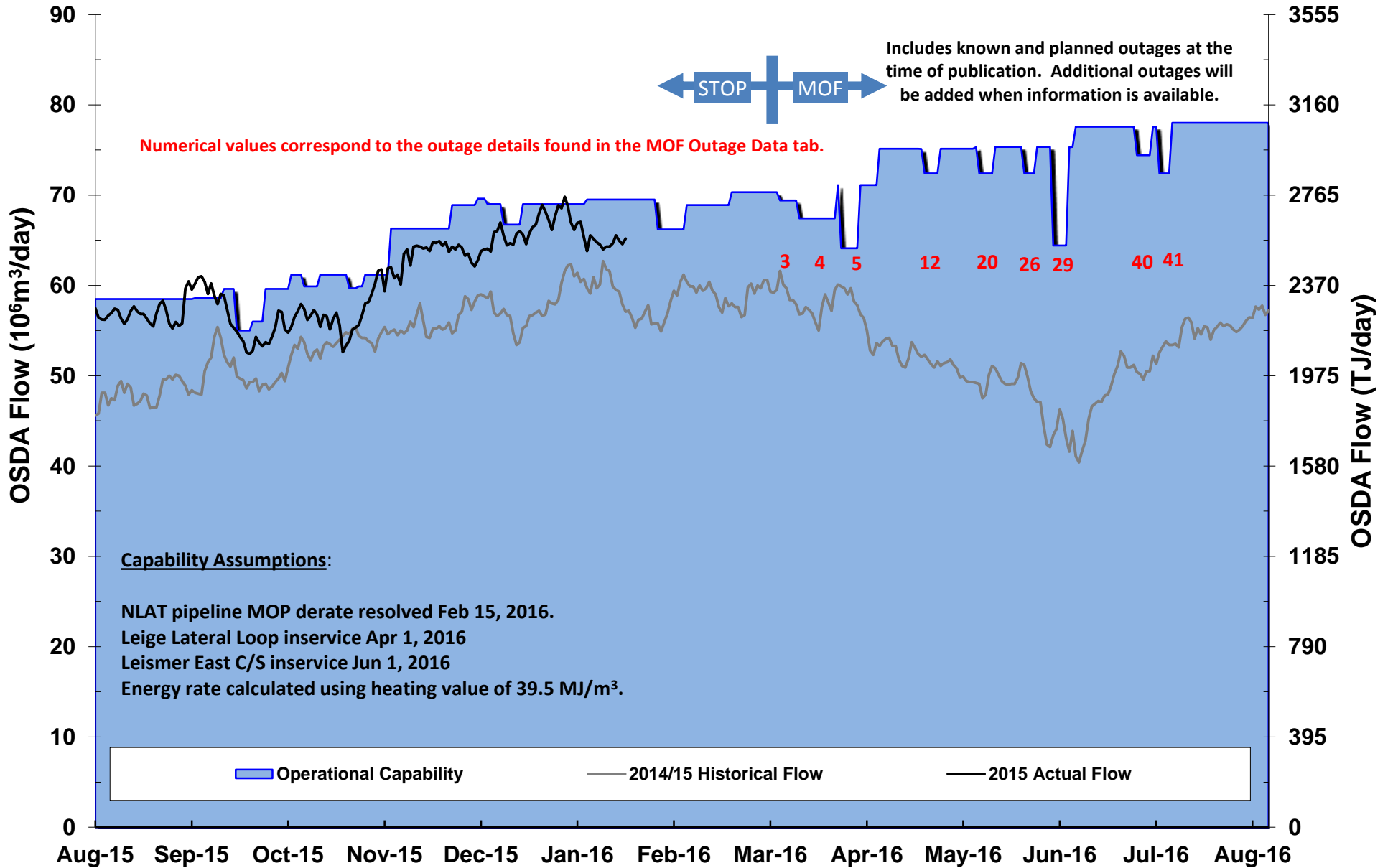
# Upstream of James River Outlook

Segments 1,2,3,4,5,7,8,9,24,26, partial 28



# Oil Sands Delivery Area (OSDA) Outlook

## Segments 10, 11,14





SEG	#	OUTAGE DESCRIPTION	DATES		RECEIPT/DELIVERY IMPACT	CONTACT	AREA
			START	FINISH			
1	19	<b>NPS 48 EAS Mainline Loop #4</b> - Pipeline Modifications (8 days). <b>Dates, duration and capacity revised</b>	02/22/16	02/29/16	Potential IT/FT delivery restriction at EGAT. Capability 117 E6m3/d.	Damola Daramola	EGAT
2	2	<b>NPS 20 Dunvegan Lateral</b> - Pipeline Maintenance (5 days). <b>Dates and duration revised</b>	02/23/16	02/27/16	Nil required at Dunvegan. Typical flow 1300 E3m3/d.	Andrea Watters	Local
3	11	<b>NPS 20 Kirby Lateral Loop</b> - Pipeline Modifications (7 days). <b>Dates, duration and capacity revised</b>	03/01/16	03/07/16	Potential IT/FT delivery restriction in Segments 10, 11 & 14. Capability 69 E6m3/d. Typical flow 60-70 E6m3/d.	Brooke Dillabough	OSDA
4	1	<b>Meikle River C C/S</b> - Station Maintenance (12 days). <b>Capacity revised</b>	03/07/16	03/18/16	Potential IT/FT receipt restriction in Segments 1,2,3,4,5,7,8,9,24,26 and partial 28. Capability 243 E6m3/d, Typical Flow 240-260 E6m3/d. Potential IT/FT delivery restriction in Segments 10, 11 & 14. Capability 66 E6m3/d. Typical flow 60-70 E6m3/d.	Andrea Watters	USJR OSDA
5	11	<b>NPS 30 Leismer Kettle River Crossover</b> - Pipeline Modifications (6 days). <b>Dates and capacity revised</b>	03/20/16	03/25/16	Potential IT/FT delivery restriction in Segments 10, 11 & 14. Capability 64 E6m3/d. Typical flow 60-70 E6m3/d	Brooke Dillabough	OSDA
6	20	<b>Jenner C/S</b> - Station Maintenance (3 days). <b>Capacity revised</b>	03/21/16	03/23/16	Potential IT/FT delivery restriction at EGAT. Capability 115 E6m3/d, Typical Flow 125-135 E6m3/d.	Damola Daramola	EGAT
7	19	<b>Red Deer River C/S</b> - Station Maintenance (5 days).	04/04/16	04/08/16	Potential IT/FT delivery restriction at EGAT. Capability 126 E6m3/d. Typical 125-135 e6m3/d	Damola Daramola	EGAT
8	21	<b>Burton Creek C/S</b> - Station Maintenance (3 days).	04/11/16	04/13/16	Potential IT/FT delivery restriction at ALTBC. Capability 50 E6m3/d/. Typical flow 50-63 E6m3/d.	Damola Daramola	ALTBC
9	18	<b>Crawling Valley C/S</b> -Station Maintenance (4 days).	04/11/16	04/14/16	Potential IT/FT delivery restriction at EGAT. Capability 124 E6m3/d. Tyical 125 - 135 e6m3/d	Damola Daramola	EGAT
10	7	<b>Latornell C/S</b> - Station Maintenance (3 days). <b>Capacity revised</b>	04/12/16	04/14/16	Potential IT/FT receipt restriction in Segments 1,2,3,4,5,7,8,9,24,26 and partial 28. Capability 247 E6m3/d, Typical Flow 240-260 E6m3/d.	Andrea Watters	USJR
11	21	<b>Burton Creek #2</b> - Unit Maintenance (2 days). <b>New</b>	04/14/16	04/15/16	Potential IT/FT delivery restriction at ALTBC. Capability 58 E6m3/d, Typical flow 59-63 E6m3/d.	Damola Daramola	ALTBC

C/S Compressor Station  
M/S Meter Station  
Shade - indicates new or changed  
Inquiries? Contact info in outages above.

EGAT - East Gate (Empr/McNeill)  
ALTBC - Alta/B.C. Border  
USJR - Upstream of James River  
OSDA - Oil Sands Delivery Area

SEG	#	OUTAGE DESCRIPTION	DATES		RECEIPT/DELIVERY IMPACT	CONTACT	AREA
			START	FINISH			
12	12	<b>NPS 16 Kirby Lateral Loop</b> - Pipeline Modifications (5 days within window). <b>Dates and capacity revised</b>	04/15/16	04/30/16	Potential IT/FT delivery restriction in Segments 10, 11 & 14. Capability 71 E6m3/d. Typical flow 60-70 E6m3/d.	Brooke Dillabough	OSDA
13	8	<b>Vetchland C/S</b> - Station Maintenance (3 days). <b>Capacity revised</b>	04/18/16	04/20/16	Potential IT/FT receipt restriction in Segments 1,2,3,4,5,7,8,9,24,26 and partial 28. Capability 245 E6m3/d, Typical Flow 240-260 E6m3/d.	Chris Pho	USJR
14	21	<b>Elko C/S</b> - Station Maintenance (5 days). <b>New</b>	04/18/16	04/22/16	Potential IT/FT receipt restriction on FHBC. Capability 58 E6m3/d. Typical flow 40 - 65 E6m3/d.	Damola Daramola	FHBC
15	19	<b>NPS 42 Eastern Alberta Mainline Loop #3</b> - Pipeline Maintenance (11 days). <b>New</b>	04/23/16	04/29/16	Potential IT/FT delivery restriction at EGAT. Capability 115 E6m3/d.	Damola Daramola	EGAT
16	21	<b>Turner Valley #2</b> - Unit Maintenance (4 days). <b>New</b>	04/25/16	04/28/16	Potential IT/FT delivery restriction at ALTBC. Capability 58 E6m3/d, Typical flow 59-63 E6m3/d.	Damola Daramola	ALTBC
17	18	<b>Princess B #6 C/S</b> -Station Maintenance (5 days).	04/25/16	04/29/16	Potential IT/FT delivery restriction at EGAT. Capability 126 E6m3/d. Typical 125 - 135 e6m3/d	Damola Daramola	EGAT
18	21	<b>Crowsnest A Unit #K</b> - Unit Maintenance (4 days). <b>New</b>	05/02/16	05/05/16	Potential IT/FT receipt restriction on FHBC. Capability 61 E6m3/d. Typical flow 40 - 65 E6m3/d	Damola Daramola	FHBC
19	8	<b>NPS 42 Foothills Pipeline Zone 6</b> - Pipeline Maintenance (6 days within window).	05/02/16	05/11/16	Potential IT/FT delivery restriction in AB. Capability 115-125 E6m3/d. Typical flow 90 -150 E6.	Damola Daramola	EGAT
20	15	<b>Dusty Lake, Gadsby A &amp; B C/S</b> - Station Maintenance (5 days). <b>New</b>	05/02/16	05/06/16	Potential IT/FT delivery restriction in Segments 10, 11 & 14. Capability 71 E6m3/d. Typical flow 60-70 E6m3/d.	Brooke Dillabough	OSDA
21	20	<b>NPS 12 Etzikom Lateral</b> - Pipeline Maintenance (6 days) <b>New</b>	05/03/16	05/07/16	Nil required at Saamis Sales, South Saskatchewan River, Bullshead, Murray Lake, Etzikom A, Etzikom B, Etzikom D. Typical flow 350 E3m3/d.	Chris Pho	Local
22	21	<b>Moyie C/S</b> - Station Maintenance (5 days). <b>Capacity revised</b>	05/09/16	05/13/16	Potential IT/FT receipt restriction on FHBC. Capability 55 E6m3/d. Typical flow 40 - 65 E6m3/d.	Damola Daramola	FHBC

C/S Compressor Station  
M/S Meter Station  
Shade - indicates new or changed  
Inquiries? Contact info in outages above.

EGAT - East Gate (Empr/McNeill)  
ALTBC - Alta/B.C. Border  
USJR - Upstream of James River  
OSDA - Oil Sands Delivery Area

SEG	#	OUTAGE DESCRIPTION	DATES		RECEIPT/DELIVERY IMPACT	CONTACT	AREA
			START	FINISH			
23	7	<b>Berland River C/S</b> - Station Maintenance (2 days). <b>New</b>	05/10/16	05/11/16	Potential IT/FT receipt restriction in Segments 1,2,3,4,5,7,8,9,24,26 and partial 28. Capability 245 E6m3/d, Typical Flow 240-260 E6m3/d.	Chris Pho	USJR
24	21	<b>Turner Valley C/S</b> - Station Maintenance (3 days). <b>Date and capacity revised</b>	05/09/16	05/11/16	Potential IT/FT delivery restriction at ALTBC. Capability 52 E6m3/d. Typical flow 50-63 E6m3/d.	Damola Daramola	ALTBC
25	8	<b>Swartz Creek C/S</b> - Station Maintenance (4 days). <b>New</b>	05/16/16	05/19/16	Potential IT/FT receipt restriction in Segments 1,2,3,4,5,7,8,9,24,26 and partial 28. Capability 245 E6m3/d, Typical Flow 240-260 E6m3/d.	Chris Pho	USJR
26	6	<b>Paul Lake A &amp; B C/S</b> - Station Maintenance (4 days) <b>New</b>	05/16/16	05/19/16	Potential IT/FT delivery restriction in Segments 10, 11 & 14. Capability 71 E6m3/d. Typical flow 60-70 E6m3/d.	Brooke Dillabough	OSDA
27	18	<b>Hussar A &amp; B C/S</b> - Station Maintenance (3 days). <b>New</b>	05/24/16	05/26/16	Potential IT/FT delivery restriction at EGAT. Capability 125 E6m3/d, Typical flow 130-140 E6m3/d.	Damola Daramola	EGAT
28	18	<b>Schrader Creek #3</b> - Station Maintenance (3 days). <b>New</b>	05/24/16	05/26/16	Potential IT/FT delivery restriction at EGAT. Capability 127 E6m3/d, Typical flow 130-140 E6m3/d.	Damola Daramola	EGAT
29	3	<b>NPS 48 Tanghe Creek Lateral Loop 2 &amp; Chinchaga Loop 3</b> - Pipeline Maintenance (5 days). <b>Capacity revised</b>	05/25/16	05/29/16	Potential IT/FT delivery restriction in Segments 10, 11 & 14. Capability 63 E6m3/d. Typical flow 60-70 E6m3/d. Potential IT/FT receipt restriction in Segments 1,2,3,4,5,7,8,9,24,26 and partial 28. Capability 240 E6m3/d, Typical Flow 240-260 E6m3/d.	Andrea Watters	OSDA USJR
30	21	<b>Crowsnest A &amp; B C/S</b> - Station Maintenance (2 days). <b>New</b>	05/30/16	05/31/16	Potential IT/FT receipt restriction on FHBC. Capability 43 E6m3/d. Typical flow 40 - 65 E6m3/d.	Damola Daramola	FHBC
31	21	<b>Crowsnest A C/S</b> - Station Maintenance (5 days). <b>New</b>	05/30/16	06/03/16	Potential IT/FT receipt restriction on FHBC. Capability 48 E6m3/d. Typical flow 40 - 65 E6m3/d.	Damola Daramola	FHBC
32	8	<b>Wolf Lake C/S</b> - Station Maintenance (5 days). <b>Capacity revised</b>	05/30/16	06/03/16	Potential IT/FT receipt restriction in Segments 1,2,3,4,5,7,8,9,24,26 and partial 28. Capability 245 E6m3/d, Typical Flow 240-260 E6m3/d.	Chris Pho	USJR
33	18	<b>NPS 42 Edson &amp; CAS Mainline Loop</b> - Pipeline Maintenance (11 days).	06/02/16	06/12/16	Potential IT/FT delivery restriction at EGAT. Capability 123 E6m3/d.	Damola Daramola	EGAT

C/S Compressor Station  
M/S Meter Station  
Shade - indicates new or changed  
Inquiries? Contact info in outages above.

EGAT - East Gate (Empr/McNeill)  
ALTBC - Alta/B.C. Border  
USJR - Upstream of James River  
OSDA - Oil Sands Delivery Area

SEG	#	OUTAGE DESCRIPTION	DATES		RECEIPT/DELIVERY IMPACT	CONTACT	AREA
			START	FINISH			
34	21	<b>Winchell Lake C/S</b> - Station Maintenance (12 days). <b>New</b>	06/06/16	06/17/16	Potential IT/FT delivery restriction at ALTBC. Capability 51 E6m3/d, Typical flow 59-63 E6m3/d.	Damola Daramola	ALTBC
35	7	<b>Gold Creek C/S</b> - Station Maintenance (5 days). <b>Capacity revised</b>	06/06/16	06/10/16	Potential IT/FT receipt restriction in Segments 1,2,3,4,5,7,8,9,24,26 and partial 28. Capability 240 E6m3/d, Typical Flow 240-260 E6m3/d.	Andrea Watters	USJR
36	9	<b>Lodgepole C/S</b> - Station Maintenance (5 days). <b>New</b>	06/13/16	06/17/16	Potential IT/FT receipt restriction in Segments 1,2,3,4,5,7,8,9,24,26 and partial 28. Capability 249 E6m3/d, Typical Flow 240-260 E6m3/d.	Chris Pho	USJR
37	18	<b>NPS 48 EAS Mainline Loop #4</b> - Pipeline Modifications (7 days within window).	06/15/16	06/30/16	Potential IT/FT delivery restriction at EGAT. Capability 120 E6m3/d.	Rahim Ruda	EGAT
38	16	<b>NPS 10 Irish Lateral</b> - Pipeline Modifications (4 days within window).	06/15/16	06/30/16	Nil required at Irish and Morecambe . Typical flow 230 E3m3/d. Nil required at Elk Point and Landon Lake Lakes. Typical flow 30 E3m3/d.	Rahim Ruda	Local
39	15	<b>NPS 8 Castor Lateral</b> - Pipeline Modifications (6 days within window).	06/15/16	06/30/16	Nil required at Castor. Typical flow 130 E3m3/d.	Rahim Ruda	Local
40	6	<b>Woodenhouse B2 C/S</b> - Station Maintenance (5 days) - <b>New</b>	06/20/16	06/24/16	Potential IT/FT delivery restriction in Segments 10, 11 & 14. Capability 73 E6m3/d. Typical flow 60-70 E6m3/d.	Brooke Dillabough	OSDA
41	6	<b>Otter Lake C/S</b> - Station Maintenance (4 days). <b>Capacity revised</b>	06/27/16	06/30/16	Potential IT/FT receipt restriction in Segments 1,2,3,4,5,7,8,9,24,26 and partial 28. Capability 248 E6m3/d, Typical Flow 240-260 E6m3/d. Potential IT/FT delivery restriction in Segments 10, 11 & 14. Capability 71 E6m3/d. Typical flow 60-70 E6m3/d.	Brooke Dillabough	USJR OSDA
42	8	<b>Clearwater C/S</b> - Station Maintenance (3 days). <b>New</b>	07/05/16	07/07/16	Potential IT/FT delivery restriction at EGAT. Capability 120 E6m3/d. Potential IT/FT receipt restriction in Segments 1,2,3,4,5,7,8,9,24,26 and partial 28. Capability 240 E6m3/d, Typical Flow 240-260 E6m3/d.	Chris Pho	EGAT USJR
43	18	<b>NPS 48 EAS Mainline Loop #4</b> - Pipeline Modifications (7 days within window). <b>Capacity revised</b>	07/08/16	07/23/16	Potential IT/FT delivery restriction at EGAT. Capability 125 E6m3/d. Potential IT/FT receipt restriction in Segments 1,2,3,4,5,7,8,9,24,26 and partial 28. Capability 245 E6m3/d, Typical Flow 240-260 E6m3/d.	Rahim Ruda	EGAT USJR
44	18	<b>Acme C/S</b> - Station Maintenance (4 days). <b>New</b>	07/11/16	07/14/16	Potential IT/FT delivery restriction at EGAT. Capability 122 E6m3/d, Typical flow 130-140 E6m3/d.	Damola Daramola	EGAT

C/S Compressor Station  
M/S Meter Station  
Shade - indicates new or changed  
Inquiries? Contact info in outages above.

EGAT - East Gate (Empr/McNeill)  
ALTBC - Alta/B.C. Border  
USJR - Upstream of James River  
OSDA - Oil Sands Delivery Area

SEG	#	OUTAGE DESCRIPTION	DATES		RECEIPT/DELIVERY IMPACT	CONTACT	AREA
			START	FINISH			
45	21	<b>Schrader Creek #2</b> - Unit Maintenance (5 days). <b>New</b>	07/11/16	07/15/16	Potential IT/FT delivery restriction at ALTBC. Capability 57 E6m3/d, Typical flow 59-63 E6m3/d.	Damola Daramola	ALTBC
46	8	<b>Nordegg C/S</b> - Station Maintenance (12 days). <b>New</b>	07/11/16	07/22/16	Potential IT/FT receipt restriction in Segments 1,2,3,4,5,7,8,9,24,26 and partial 28. Capability 245 E6m3/d, Typical Flow 240-260 E6m3/d.	Chris Pho	USJR
47	12	<b>NPS 10 Baptiste Lateral</b> - Pipeline Modifications (6 days within window). <b>Dates revised</b>	07/15/16	07/31/16	Nil required at Spear Lake. Typical flow 20 E3m3/d.	Rahim Ruda	Local
48	8	<b>Clearwater #1</b> - Unit Maintenance (4 days). <b>New</b>	07/18/16	07/21/16	Potential IT/FT receipt restriction in Segments 1,2,3,4,5,7,8,9,24,26 and partial 28. Capability 245 E6m3/d, Typical Flow 240-260 E6m3/d.	Chris Pho	USJR
49	18	<b>NPS 48 EAS Mainline Loop #4</b> - Pipeline Maintenance (7 days).	07/19/16	07/25/16	Potential IT/FT delivery restriction at EGAT. Capability 125 E6m3/d.	Rahim Ruda	EGAT
50	21	<b>Drywood C/S</b> - Station Maintenance (3 days). <b>New</b>	07/26/16	07/28/16	Potential IT/FT delivery restriction at Alberta Montana Border. Capability 2500 E3m3/d. Typical flow 1500- 2500 E3m3/d.	Damola Daramola	Local
51	19	<b>NPS 42 Foothills Pipeline Zone 9</b> - Pipeline Maintenance (7 days).	08/03/16	08/09/16	Potential IT/FT receipt restriction in SK. Capability 35-50 E6, typical flow 40-45 E6.	Damola Daramola	FHSK
52	24	<b>NPS 10 Greencourt Lateral</b> - Pipeline Maintenance (12 days).	08/05/16	08/16/16	Nil required at Greencourt. Typical flow 20 E3m3/d.	Rahim Ruda	Local
53	4	<b>Alces River C/S</b> - Station Maintenance (4 days). <b>Capacity revised</b>	08/08/16	08/11/16	Potential IT/FT receipt restriction in Segments 1,2,3,4,5,7,8,9,24,26 and partial 28. Capability 245 E6m3/d, Typical Flow 240-260 E6m3/d.	Andrea Watters	USJR
54	8	<b>Swartz Creek C/S</b> - Station Maintenance (5 days).	08/15/16	08/19/16	Potential IT/FT receipt restriction in Segments 1,2,3,4,5,7,8,9,24,26 and partial 28. Capability 247 E6m3/d, Typical Flow 240-260 E6m3/d.	Chris Pho	USJR
55	12	<b>NPS 24 Flat Lake Lateral Loop #3</b> - Pipeline Modifications (5 days within window). <b>New</b>	08/15/16	08/30/16	Potential IT/FT delivery restriction in Segments 10, 11 & 14. Capability 68 E6m3/d. Typical flow 60-70 E6m3/d.	Rahim Ruda	OSDA

C/S Compressor Station  
M/S Meter Station  
Shade - indicates new or changed  
Inquiries? Contact info in outages above.

EGAT - East Gate (Empr/McNeill)  
ALTBC - Alta/B.C. Border  
USJR - Upstream of James River  
OSDA - Oil Sands Delivery Area

SEG #	OUTAGE DESCRIPTION	DATES		RECEIPT/DELIVERY IMPACT	CONTACT	AREA
		START	FINISH			
56	21	<b>NPS 42 Western Alberta Mainline Loop</b> - Pipeline Modifications 6 days within window).	08/17/16	08/22/16	Potential IT/FT delivery restriction at ALTBC. Capability 60 E6m3/d, Typical flow 55-60 E6m3/d.	Chris Pho ALTBC
57	10	<b>NPS 30 Fort McKay Mainline</b> - Pipeline Maintenance (7 days).	08/30/16	09/05/16	IT/FT delivery restriction required for Horizon Sales, Aurora Sales, Aurora # 2 Sales, Jackpine Creek Sales, Aspen Sales, Wapasu Creek Sales, Kearl Sales and Firebag Sales meter stations. Capability = 13000 E3m3/d. Typical flow 15000 to 16000 E3m3/d.	Brooke Dillabough Local
58	6	<b>NPS 24 Peerless Lake Lateral Loop</b> - Pipeline Modifications (6 days within window). <b>Dates revised</b>	09/01/16	09/15/16	Potential IT/FT delivery restriction in Segments 10, 11 & 14. Capability 65 E6m3/d. Typical flow 60-70 E6m3/d.	Rahim Ruda OSDA
59	12	<b>NPS 30 Paul Lake Crossover</b> - Pipeline Modifications (6 days within window). <b>Dates and capacity revised</b>	09/01/16	09/15/16	Potential IT/FT delivery restriction in Segments 10, 11 & 14. Capability 60 E6m3/d. Typical flow 60-70 E6m3/d. Potential IT/FT receipt restriction in Segments 1,2,3,4,5,7,8,9,24,26 and partial 28. Capability 240 E6m3/d, Typical Flow 240-260 E6m3/d.	Rahim Ruda OSDA USJR
60	10	<b>NPS 24 Fort McKay Mainline</b> - Pipeline Maintenance (7 days).	09/06/16	09/10/16	IT/FT delivery restriction required for Aspen Sales, Wapasu Creek Sales, Kearl Sales and Firebag Sales meter stations. Capability = 8300 E3m3/d. Typical flow 10000 to 12000 E3m3/d.	Brooke Dillabough Local
61	7	<b>Berland River C/S</b> - Station Maintenance (3 days).	09/13/16	09/15/16	Potential IT/FT receipt restriction in Segments 1,2,3,4,5,7,8,9,24,26 and partial 28. Capability 252 E6m3/d, Typical Flow 240-260 E6m3/d.	Chris Pho USJR
62	24	<b>NPS 10 Judy Creek Lateral</b> - Pipeline Modifications (6 days within window). <b>Dates revised</b>	09/15/16	09/30/16	Nil required at Judy Creek and Virginia Hills. Typical flow 300 E3m3/d. Nil required at Sakwatamau Sales. Typical flow 0 E3m3/d.	Rahim Ruda Local
63	3	<b>Hidden Lake North C/S</b> - Station Maintenance (5 days). <b>Capacity revised</b>	09/19/16	09/23/16	Potential IT/FT receipt restriction in Segments 1,2,3,4,5,7,8,9,24,26 and partial 28. Capability 245 E6m3/d, Typical Flow 240-260 E6m3/d.	Andrea Watters USJR
64	7	<b>Latornell C/S</b> - Station Maintenance (4 days). <b>Capacity revised</b>	09/27/16	09/30/16	Potential IT/FT receipt restriction in Segments 1,2,3,4,5,7,8,9,24,26 and partial 28. Capability 242 E6m3/d, Typical Flow 240-260 E6m3/d.	Andrea Watters USJR
65	2	<b>NPS 8 Dunvegan West Lateral</b> - Pipeline Modifications (6 days within window).	10/01/16	10/15/16	Nil required at Dunvegan West and Dunvegan West #2. Typical flow 50 E3m3/d.	Rahim Ruda Local
66	15	<b>NPS 30 North Lateral Loop #2</b> - Pipeline Modifications (5 days within window). <b>New</b>	10/01/16	10/15/16	Potential IT/FT delivery restriction in Segments 6, 10-16, 23 & 28. Capability 102 E6m3/d. Typical flow 95-105 E6m3/d.	Rahim Ruda OSDA

C/S Compressor Station  
M/S Meter Station  
Shade - indicates new or changed  
Inquiries? Contact info in outages above.

EGAT - East Gate (Empr/McNeill)  
ALTBC - Alta/B.C. Border  
USJR - Upstream of James River  
OSDA - Oil Sands Delivery Area