



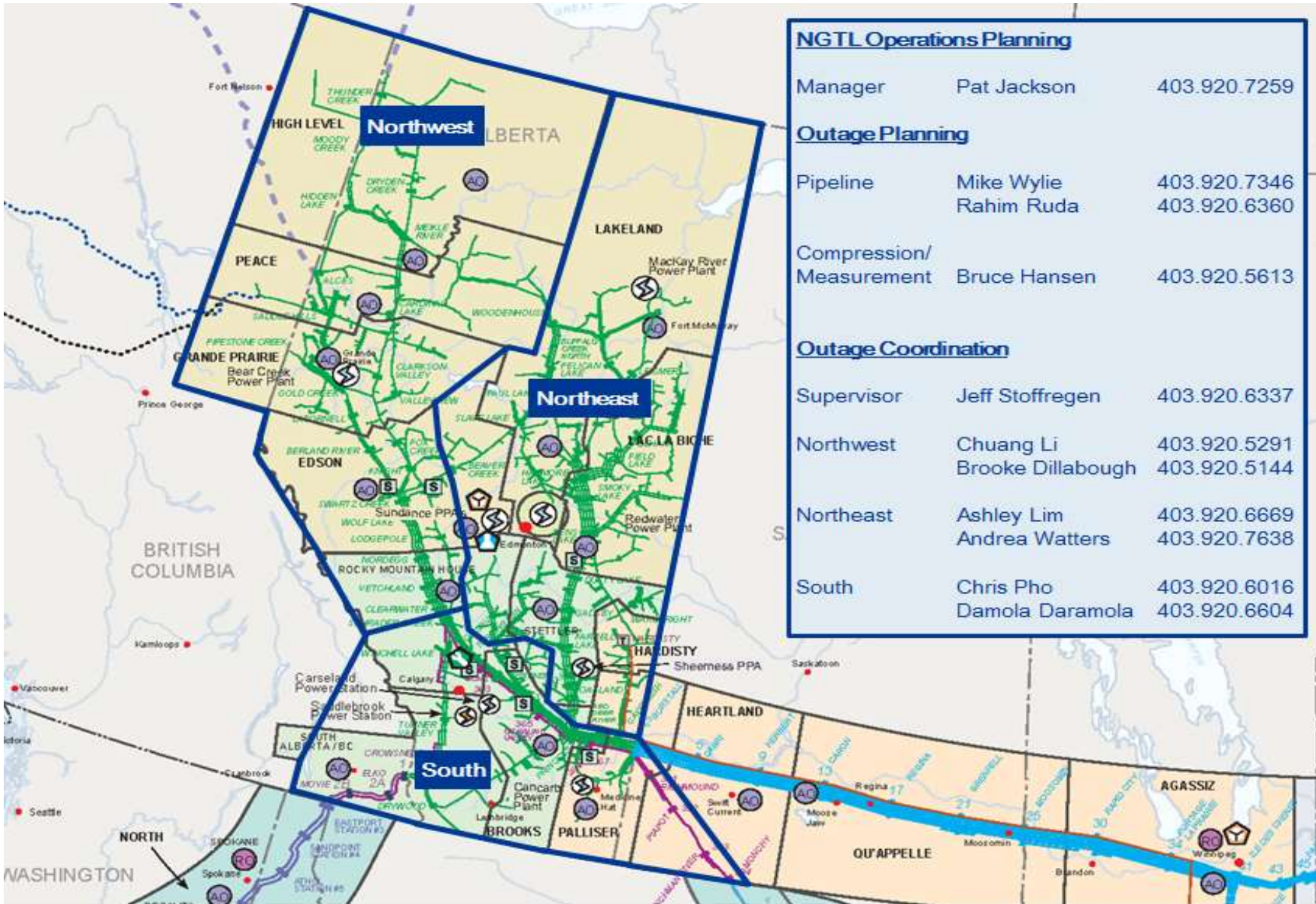
Monthly Outage Forecast December, 2015



December Monthly Outage Forecast

The Monthly Outage Forecast is a tool provided by TransCanada to show the estimated operational capability. This information is provided for informational purposes only and is not to be relied upon for any other purpose whatsoever. The information is based upon certain assumptions that may or may not be accurate, and therefore is subject to various risks and uncertainties. TransCanada shall not be liable for damages sustained as a result of any use or reliance on such information. The Monthly Outage Forecast window has been extended to include a 12 month outage planning horizon. Please note, only known and planned outages at the time of publishing will be included in the Monthly Outage Forecast. As new outages are planned they will be added to subsequent MOF reports.

NGTL MAP

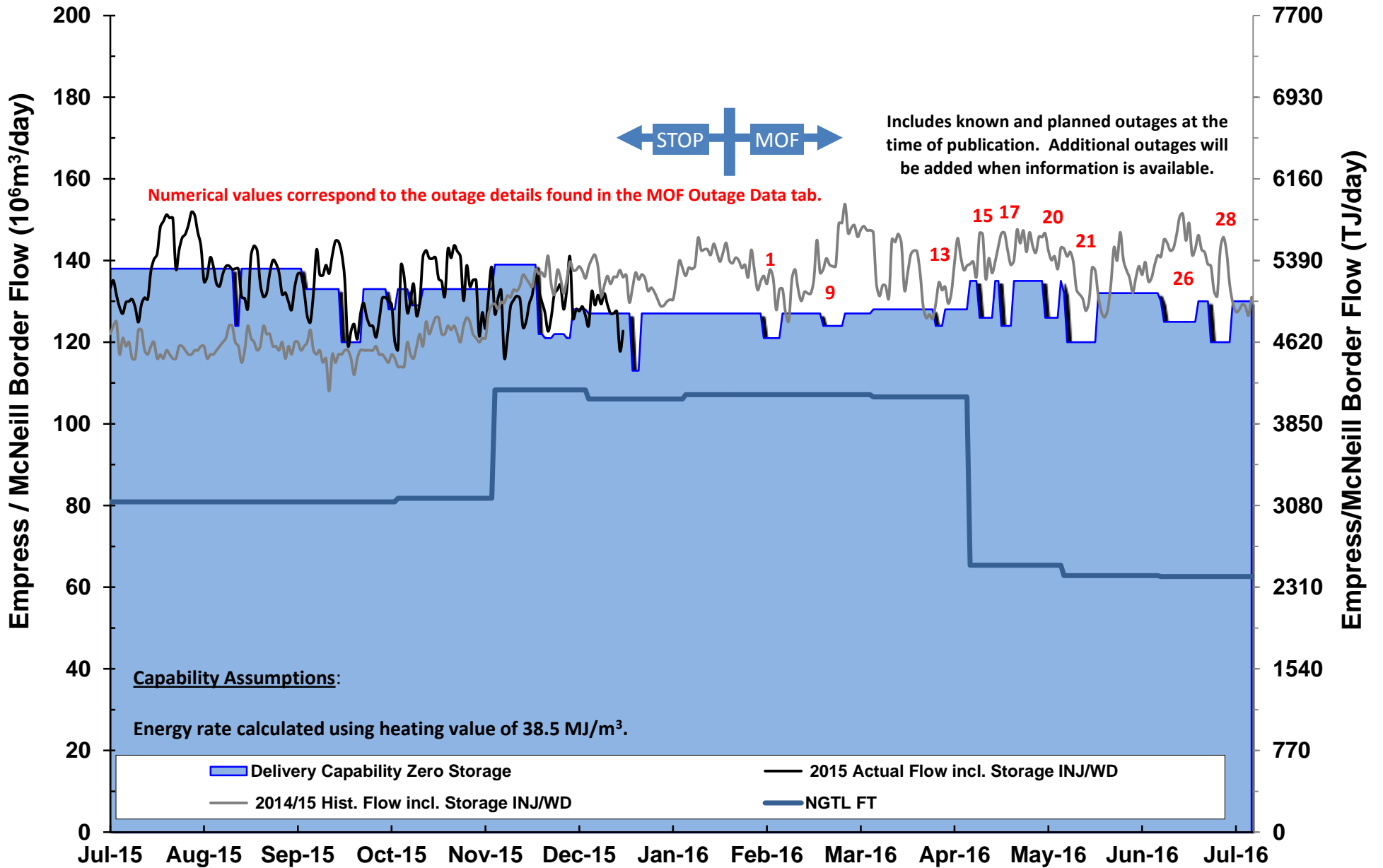


NGTL Operations Planning		
Manager	Pat Jackson	403.920.7259
Outage Planning		
Pipeline	Mike Wylie	403.920.7346
	Rahim Ruda	403.920.6360
Compression/ Measurement	Bruce Hansen	403.920.5613
Outage Coordination		
Supervisor	Jeff Stoffregen	403.920.6337
Northwest	Chuang Li	403.920.5291
	Brooke Dillabough	403.920.5144
Northeast	Ashley Lim	403.920.6669
	Andrea Watters	403.920.7638
South	Chris Pho	403.920.6016
	Damola Daramola	403.920.6604

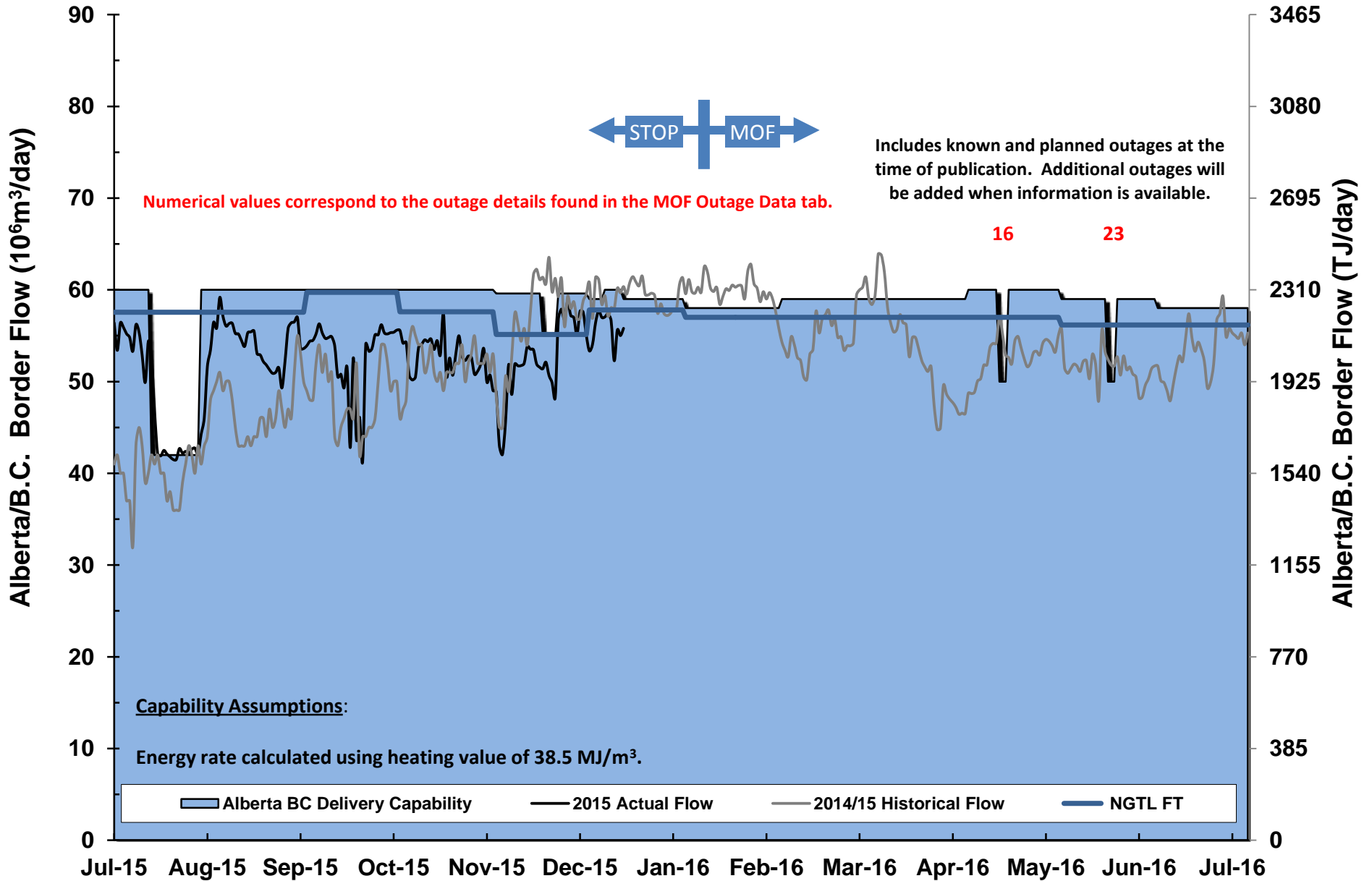
For NGTL System Facilities Segment codes please view link below

http://www.transcanada.com/customerexpress/docs/fh_system_maps/AB_System_Map_2015_Segments_Rev16.pdf

Empress/McNeill Border



Alberta/B.C. Border

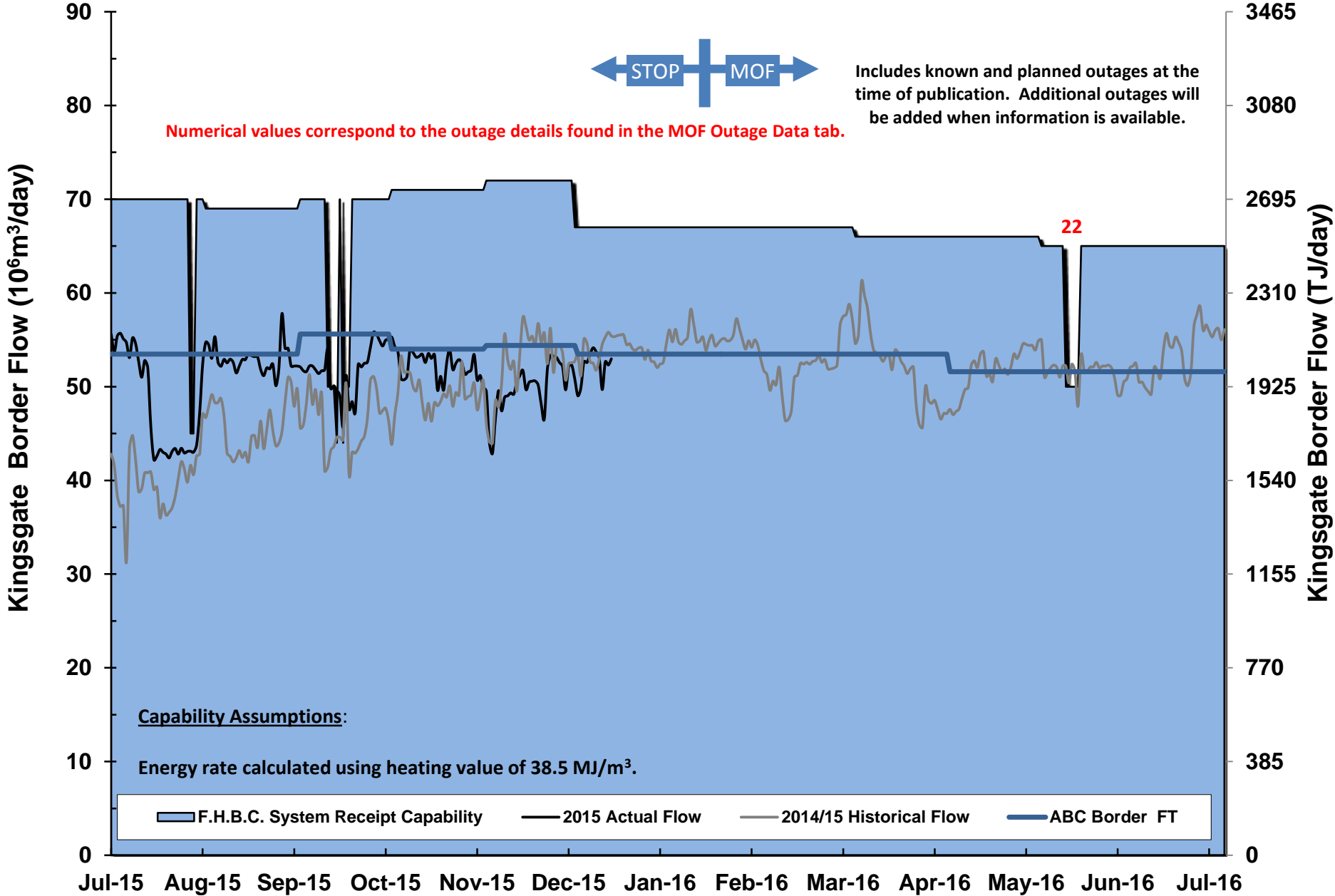


Kingsgate Border



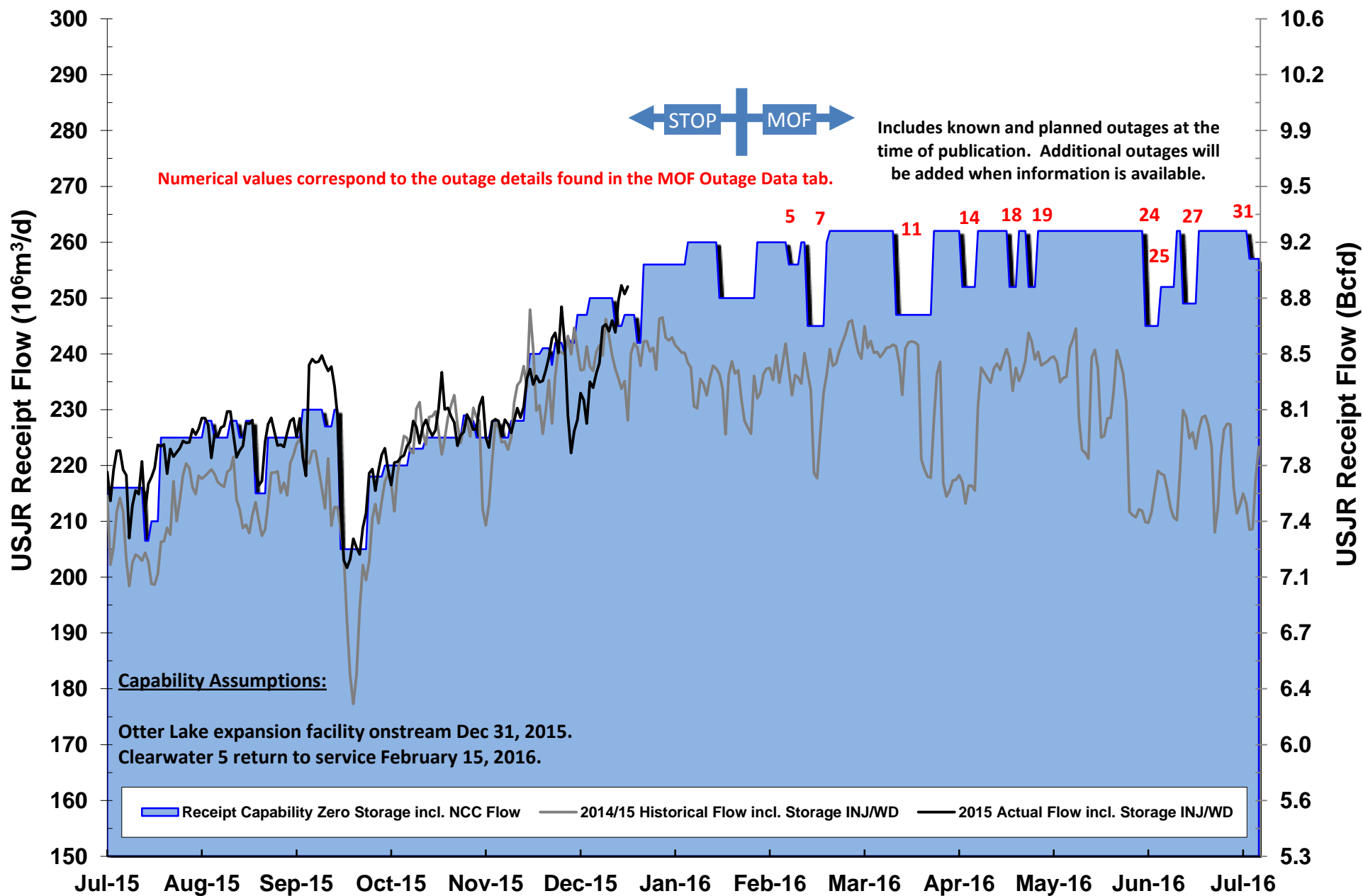
Includes known and planned outages at the time of publication. Additional outages will be added when information is available.

Numerical values correspond to the outage details found in the MOF Outage Data tab.



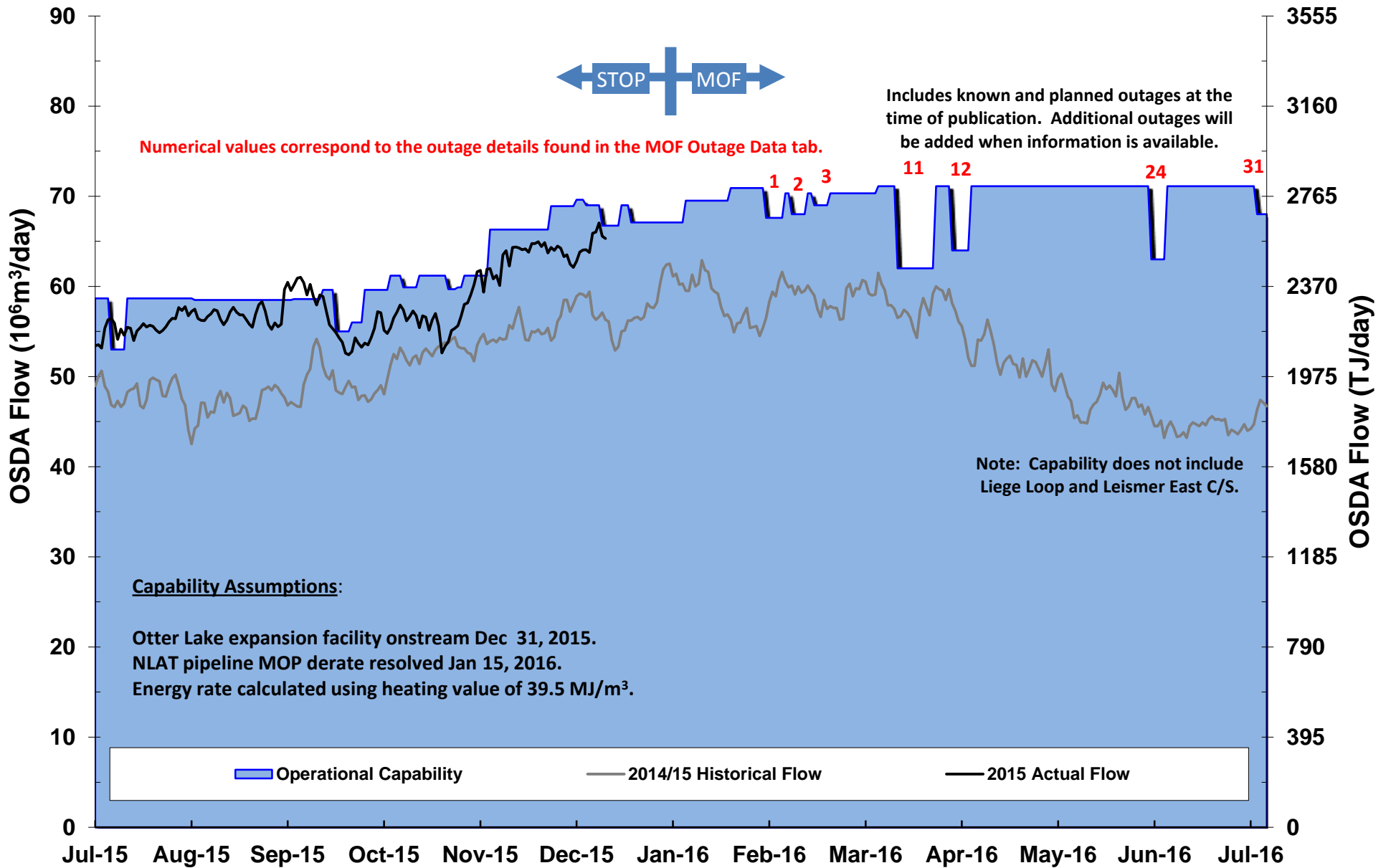
Upstream of James River Outlook

Segments 1,2,3,4,5,7,8,9,24,26, partial 28



Oil Sands Delivery Area (OSDA) Outlook

Segments 10, 11,14



SEG #	OUTAGE DESCRIPTION	DATES		RECEIPT/DELIVERY IMPACT	CONTACT	AREA
		START	FINISH			
1	6 Woodenhouse A & B C/S - Station Maintenance (7 days). Capacity revised	01/26/16	01/31/16	Potential IT/FT delivery restriction in Segments 10,11 and 14. Capability 67 E6m3/d, Typical Flow 60-65 E6m3/d. Potential IT/FT delivery restriction at EGAT. Capability 133 E6m3/d, Typical Flow 120-135 E6m3/d.	Andrea Watters	OSDA EGAT
2	11 NPS 20 Kirby Lateral Loop - Pipeline Modifications (5 days within window). Capacity revised	02/01/16	02/15/16	Potential IT/FT delivery restriction in Segments 10, 11 & 14. Capability 64 E6m3/d. Typical flow 60-65 E6m3/d.	Brooke Dillabough	OSDA
3	12 NPS 16 Kirby Lateral Loop - Pipeline Modifications (5 days within window). Capacity revised	02/01/16	02/15/16	Potential IT/FT delivery restriction in Segments 10, 11 & 14. Capability 69 E6m3/d. Typical flow 60-65 E6m3/d.	Brooke Dillabough	OSDA
4	7 NPS 24 Cutbank River Lateral Loop - Pipeline Modifications (5-6 days within window). New	02/01/16	02/15/16	Nil required at Bilbo. Typical flow 80-100 E3m3/d. Nils required at Wapiti South Sales and Wapiti Central Sales. Typical flow 110-130 E3m3/d. Potential IT/FT receipt restriction in partial 7. Capability 12.5 E6m3/d, Typical Flow 19-22 E6m3/d.	Andrea Watters	Local
5	7 NPS 30 Grande Prairie Mainline Loop - Pipeline Modifications (4 days within window). New	02/01/16	02/15/06	Potential IT/FT receipt restriction in Segments 1,2,3,4,5,7,8,9,24,26 and partial 28. Capability 256 E6m3/d, Typical Flow 240-260 E6m3/d.	Andrea Watters	USJR
6	18 NPS 12 Seiu Lateral - Pipeline Maintenance (7 days). New	02/03/16	02/09/16	Nil required at Seiu Creek. Typical flow 250 E3.	Damola Daramola	Local
7	8 Swartz Creek C/S - Station Maintenance (6 days). Capacity revised	02/08/16	02/13/16	Potential IT/FT receipt restriction in Segments 1,2,3,4,5,7,8,9,24,26 and partial 28. Capability 245 E6m3/d, Typical Flow 240-260 E6m3/d.	Brooke Dillabough	USJR
8	5 NPS 8 Simonette Lateral - Pipeline Modifications (5 days within window).	02/12/16	02/16/16	Nils required at Simonette, Simonette Sales, Deep Valley Creek Sales, Deep Valley Creek East and Maddenville. Typical flow 150 E3m3/d.	Andrea Watters	Local
9	19 NPS 48 EAS Mainline Loop #4 - Pipeline Modifications (7 days within window). Dates and capacity revised	02/20/16	03/05/16	Potential IT/FT delivery restriction at EGAT. Capability 124 E6m3/d.	Damola Daramola	EGAT
10	2 NPS 20 Dunvegan Lateral - Pipeline Maintenance (6 days). New	02/23/16	02/28/16	Nil required at Dunvegan. Typical flow 1300 E3m3/d.	Rahim Ruda	Local
11	1 Meikle C C/S - Station Maintenance (12 days). New	03/07/16	03/18/16	Potential IT/FT receipt restriction in Segments 1,2,3,4,5,7,8,9,24,26 and partial 28. Capability 247 E6m3/d, Typical Flow 240-260 E6m3/d. Potential IT/FT delivery restriction in Segments 10, 11 & 14. Capability 62 E6m3/d. Typical flow 60-65 E6m3/d.	Brooke Dillabough	USJR OSDA

C/S Compressor Station
M/S Meter Station
Shade - indicates new or changed
Inquiries? Contact info in outages above.

EGAT - East Gate (Empr/McNeill)
ALTBC - Alta/B.C. Border
USJR - Upstream of James River
OSDA - Oil Sands Delivery Area

SEG	#	OUTAGE DESCRIPTION	DATES		RECEIPT/DELIVERY IMPACT	CONTACT	AREA
			START	FINISH			
12	11	NPS 30 Leismer Kettle River Crossover - Pipeline Modifications (6 days within window). New	03/19/16	03/31/16	Potential IT/FT delivery restriction in Segments 10, 11 & 14. Capability 64 E6m3/d. Typical flow 60-65 E6m3/d	Andrea Watters	OSDA
13	20	Jenner C/S - Station Maintenance (3 days).	03/21/16	03/23/16	Potential IT/FT delivery restriction at EGAT. Capability 126 E6m3/d, Typical Flow 125-135 E6m3/d.	Damola Daramola	EGAT
14	8	Nordegg C/S - Station Maintenance (5 days). New	03/28/16	04/01/16	Potential IT/FT receipt restriction in Segments 1,2,3,4,5,7,8,9,24,26 and partial 28. Capability 252 E6m3/d, Typical Flow 240-260 E6m3/d.	Brooke Dillabough	USJR
15	19	Red Deer C/S - Station Maintenance (5 days). New	04/04/16	04/08/16	Potential IT/FT delivery restriction at EGAT. Capability 126 E6m3/d. Typical 125-135 e6m3/d	Damola Daramola	EGAT
16	21	Burton Creek C/S - Station Maintenance (3 days). New	04/11/16	04/13/16	Potential IT/FT delivery restriction at ALTBC. Capability 50 E6m3/d/. Typical flow 50-63 E6m3/d.	Damola Daramola	ALTBC
17	18	Crawling Valley C/S -Station Maintenance (4 days). New	04/11/16	04/14/16	Potential IT/FT delivery restriction at EGAT. Capability 124 E6m3/d. Tyical 125 - 135 e6m3/d	Damola Daramola	EGAT
18	7	Latornell C/S - Station Maintenance (3 days). New	04/12/16	04/14/16	Potential IT/FT receipt restriction in Segments 1,2,3,4,5,7,8,9,24,26 and partial 28. Capability 252 E6m3/d, Typical Flow 240-260 E6m3/d.	Brooke Dillabough	USJR
19	8	Vetchland C/S - Station Maintenance (3 days). New	04/18/16	04/20/16	Potential IT/FT receipt restriction in Segments 1,2,3,4,5,7,8,9,24,26 and partial 28. Capability 252 E6m3/d, Typical Flow 240-260 E6m3/d.	Brooke Dillabough	USJR
20	18	Princess B #6 C/S -Station Maintenance (5 days). New	04/25/16	04/29/16	Potential IT/FT delivery restriction at EGAT. Capability 126 E6m3/d. Typical 125 - 135 e6m3/d	Damola Daramola	EGAT
21	8	NPS 42 Foothills Pipeline Zone 6 - Pipeline Maintainance (6 days within window). New	05/02/16	05/11/16	Potential IT/FT delivery restriction in AB. Capability 115-125 E6m3/d. Typical flow 90 -150 E6.	Damola Daramola	EGAT
22	21	Moyie C/S - Station Maintenance (5 days). New	05/09/16	05/13/16	Potential IT/FT restriction on FHBC. Capability 50 E6m3/d. Typical flow 40 - 65 E6m3/d.	Damola Daramola	FHBC

C/S Compressor Station
M/S Meter Station
Shade - indicates new or changed
Inquiries? Contact info in outages above.

EGAT - East Gate (Empr/McNeill)
ALTBC - Alta/B.C. Border
USJR - Upstream of James River
OSDA - Oil Sands Delivery Area

SEG	#	OUTAGE DESCRIPTION	DATES		RECEIPT/DELIVERY IMPACT	CONTACT	AREA
			START	FINISH			
23	21	Turner Valley C/S - Station Maintenance (3 days). New	05/16/16	05/18/16	Potential IT/FT delivery restriction at ALTBC. Capability 50 E6m3/d. Typical flow 50-63 E6m3/d.	Damola Daramola	ALTBC
24	3	NPS 48 Tanghe Creek Lateral Loop 2 & Chinchaga Loop 3 - Pipeline Maintenance (5 days). New	05/25/16	05/29/16	Potential IT/FT delivery restriction in Segments 10, 11 & 14. Capability 63 E6m3/d. Typical flow 60-65 E6m3/d. Potential IT/FT receipt restriction in Segments 1,2,3,4,5,7,8,9,24,26 and partial 28. Capability 245 E6m3/d, Typical Flow 240-260 E6m3/d.	Rahim Ruda	OSDA USJR
25	8	Wolf Lake C/S - Station Maintenance (5 days). New	05/30/16	06/03/16	Potential IT/FT receipt restriction in Segments 1,2,3,4,5,7,8,9,24,26 and partial 28. Capability 252 E6m3/d, Typical Flow 240-260 E6m3/d.	Brooke Dillabough	USJR
26	18	NPS 42 Edson & CAS Mainline Loop - Pipeline Maintenance (11 days). New	06/02/16	06/12/16	Potential IT/FT delivery restriction at EGAT. Capability 125 E6m3/d.	Rahim Ruda	EGAT
27	7	Gold Creek C/S - Station Maintenance (5 days). New	06/06/16	06/10/16	Potential IT/FT receipt restriction in Segments 1,2,3,4,5,7,8,9,24,26 and partial 28. Capability 249 E6m3/d, Typical Flow 240-260 E6m3/d.	Brooke Dillabough	USJR
28	18	NPS 48 EAS Mainline Loop #4 - Pipeline Modifications (7 days within window). New	06/15/16	06/30/16	Potential IT/FT delivery restriction at EGAT. Capability 120 E6m3/d.	Rahim Ruda	EGAT
29	16	NPS 10 Irish Lateral - Pipeline Modifications (4 days within window).	06/15/16	06/30/16	Nil required at Irish and Morecambe . Typical flow 230 E3m3/d. Nil required at Elk Point and Landon Lake Lakes. Typical flow 30 E3m3/d.	Rahim Ruda	Local
30	15	NPS 8 Castor Lateral - Pipeline Modifications (6 days within window). Dates revised	06/15/16	06/30/16	Nil required at Castor. Typical flow 130 E3m3/d.	Rahim Ruda	Local
31	6	Otter Lake A C/S - Station Maintenance (4 days). New	06/27/16	06/30/16	Potential IT/FT receipt restriction in Segments 1,2,3,4,5,7,8,9,24,26 and partial 28. Capability 257 E6m3/d, Typical Flow 240-260 E6m3/d. Potential IT/FT delivery restriction in Segments 10, 11 & 14. Capability 68 E6m3/d. Typical flow 60-65 E6m3/d.	Brooke Dillabough	USJR OSDA
32	18	NPS 48 EAS Mainline Loop #4 - Pipeline Modifications (7 days within window). New	07/01/16	07/15/16	Potential IT/FT delivery restriction at EGAT. Capability 130 E6m3/d. Potential IT/FT receipt restriction in Segments 1,2,3,4,5,7,8,9,24,26 and partial 28. Capability 250 E6m3/d, Typical Flow 240-260 E6m3/d.	Rahim Ruda	EGAT USJR
33	24	NPS 10 Judy Creek Lateral - Pipeline Modifications (6 days within window).	07/07/16	07/21/16	Nil required at Judy Creek and Virginia Hills. Typical flow 300 E3m3/d. Nil required at Sakwatamau Sales. Typical flow 0 E3m3/d.	Rahim Ruda	Local

C/S Compressor Station
M/S Meter Station
Shade - indicates new or changed
Inquiries? Contact info in outages above.

EGAT - East Gate (Empr/McNeill)
ALTBC - Alta/B.C. Border
USJR - Upstream of James River
OSDA - Oil Sands Delivery Area

SEG	#	OUTAGE DESCRIPTION	DATES		RECEIPT/DELIVERY IMPACT	CONTACT	AREA
			START	FINISH			
34	18	NPS 48 EAS Mainline Loop #4 - Pipeline Maintenance (7 days). New	07/19/16	07/25/16	Potential IT/FT delivery restriction at EGAT. Capability 125 E6m3/d.	Rahim Ruda	EGAT
35	19	NPS 42 Foothills Pipeline Zone 9 - Pipeline Maintenance (7 days). New	08/03/16	08/09/16	Potential IT/FT receipt restriction in SK. Capability 35-50 E6, typical flow 40-45 E6.	Damola Daramola	FHSK
36	24	NPS 10 Greencourt Lateral - Pipeline Maintenance (12 days). New	08/05/16	08/16/16	Nil required at Greencourt. Typical flow 20 E3m3/d.	Rahim Ruda	Local
37	4	Alces B#2 - Station Maintenance (4 days). New	08/08/16	08/11/16	Potential IT/FT receipt restriction in Segments 1,2,3,4,5,7,8,9,24,26 and partial 28. Capability 257 E6m3/d, Typical Flow 240-260 E6m3/d.	Andrea Watters	USJR
38	8	Swartz Creek C/S - Station Maintenance (5 days). New	08/15/16	08/19/16	Potential IT/FT receipt restriction in Segments 1,2,3,4,5,7,8,9,24,26 and partial 28. Capability 247 E6m3/d, Typical Flow 240-260 E6m3/d.	Brooke Dillabough	USJR
39	21	NPS 42 Western Alberta Mainline Loop - Pipeline Modifications 6 days within window). New	08/17/16	08/22/16	Potential IT/FT delivery restriction at ALTBC. Capability 60 E6m3/d, Typical flow 55-60 E6m3/d.	Chris Pho	ALTBC
40	10	NPS 30 Fort McKay Mainline - Pipeline Maintenance (7 days). Dates revised	08/30/16	09/05/16	IT/FT delivery restriction required for Horizon Sales, Aurora Sales, Aurora # 2 Sales, Jackpine Creek Sales, Aspen Sales, Wapasu Creek Sales, Kearl Sales and Firebag Sales meter stations. Capability = 13000 E3m3/d. Typical flow 15000 to 16000 E3m3/d.	Brooke Dillabough	Local
41	10	NPS 24 Fort McKay Mainline - Pipeline Maintenance (7 days). Dates revised	09/06/16	09/10/16	IT/FT delivery restriction required for Aspen Sales, Wapasu Creek Sales, Kearl Sales and Firebag Sales meter stations. Capability = 8300 E3m3/d. Typical flow 10000 to 12000 E3m3/d.	Brooke Dillabough	Local
42	7	Berland C/S - Station Maintenance (3 days). New	09/13/16	09/15/16	Potential IT/FT receipt restriction in Segments 1,2,3,4,5,7,8,9,24,26 and partial 28. Capability 252 E6m3/d, Typical Flow 240-260 E6m3/d.	Brooke Dillabough	USJR
43	12	NPS 10 Baptiste Lateral - Pipeline Modifications (6 days within window). New	09/15/16	09/30/16	Nil required at Spear Lake. Typical flow 20 E3m3/d.	Rahim Ruda	Local
44	3	Hidden Lake North C/S - Station Maintenance (5 days). New	09/19/16	09/23/16	Potential IT/FT receipt restriction in Segments 1,2,3,4,5,7,8,9,24,26 and partial 28. Capability 252 E6m3/d, Typical Flow 240-260 E6m3/d.	Brooke Dillabough	USJR

C/S Compressor Station
M/S Meter Station
Shade - indicates new or changed
Inquiries? Contact info in outages above.

EGAT - East Gate (Empr/McNeill)
ALTBC - Alta/B.C. Border
USJR - Upstream of James River
OSDA - Oil Sands Delivery Area

	SEG		DATES		RECEIPT/DELIVERY IMPACT	CONTACT	AREA
	#	OUTAGE DESCRIPTION	START	FINISH			
45	7	Latornell C/S - Station Maintenance (4 days). New	09/27/16	09/30/16	Potential IT/FT receipt restriction in Segments 1,2,3,4,5,7,8,9,24,26 and partial 28. Capability 252 E6m3/d, Typical Flow 240-260 E6m3/d.	Brooke Dillabough	USJR
46	2	NPS 8 Dunvegan West Lateral - Pipeline Modifications (6 days within window). Dates revised	10/01/16	10/15/16	Nil required at Dunvegan West and Dunvegan West #2. Typical flow 50 E3m3/d.	Rahim Ruda	Local
47	6	NPS 24 Peerless Lake Lateral Loop - Pipeline Modifications (6 days within window). New	10/15/16	10/30/16	Potential IT/FT delivery restriction in Segments 10, 11 & 14. Capability 65 E6m3/d. Typical flow 60-65 E6m3/d.	Rahim Ruda	OSDA
48	12	NPS 30 Paul Lake Crossover - Pipeline Modifications (6 days within window). New	10/15/16	10/30/16	Potential IT/FT delivery restriction in Segments 10, 11 & 14. Capability 60 E6m3/d. Typical flow 60-65 E6m3/d. Potential IT/FT receipt restriction in Segments 1,2,3,4,5,7,8,9,24,26 and partial 28. Capability 250 E6m3/d, Typical Flow 240-260 E6m3/d.	Rahim Ruda	OSDA USJR

C/S Compressor Station
M/S Meter Station
Shade - indicates new or changed
Inquiries? Contact info in outages above.

EGAT - East Gate (Empr/McNeill)
ALTBC - Alta/B.C. Border
USJR - Upstream of James River
OSDA - Oil Sands Delivery Area