

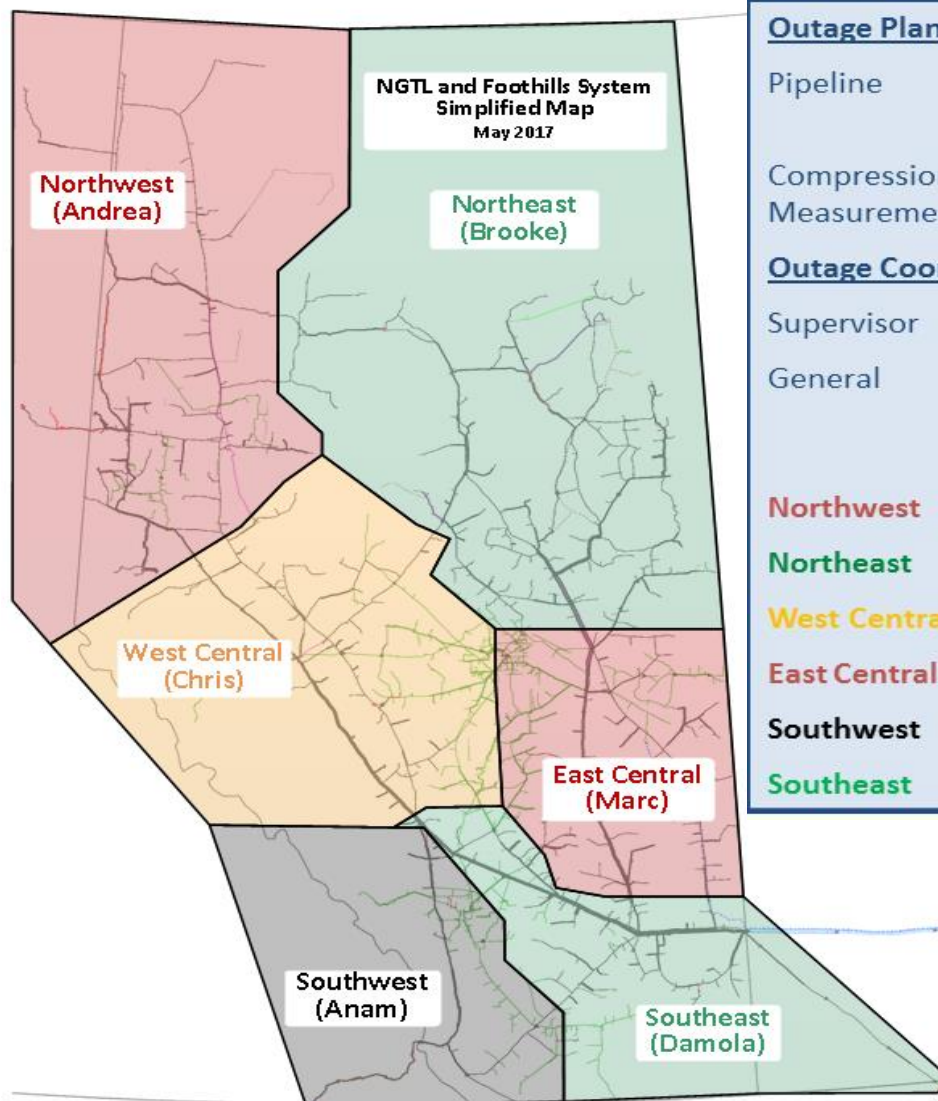


NGTL System & Foothills Pipeline Monthly Outage Forecast August 2017



August Monthly Outage Forecast

The Monthly Outage Forecast is a tool provided by TransCanada to show the estimated operational capability. This information is provided for informational purposes only and is not to be relied upon for any other purpose whatsoever. The information is based upon certain assumptions that may or may not be accurate, and therefore is subject to various risks and uncertainties. TransCanada shall not be liable for damages sustained as a result of any use or reliance on such information. Please note, only known and planned outages at the time of publishing will be included in the Monthly Outage Forecast. As new outages are planned they will be added to subsequent MOF reports.



Outage Planning

Pipeline	Mike Wylie	403.920.7346
	Rahim Ruda	403.920.6360

Compression/ Measurement	Bruce Hansen	403.920.5613
-----------------------------	--------------	--------------

Outage Coordination

Supervisor	Jeff Stoffregen	403.920.6337
------------	-----------------	--------------

General	Chuang Li	403.920.5291
	Ashley Lim	403.920.6669
	Kristi Eng	403.920.7749

Northwest	Andrea Watters	403.920.7638
------------------	----------------	--------------

Northeast	Brooke Penner	403.920.5144
------------------	---------------	--------------

West Central	Chris Pho	403.920.6016
---------------------	-----------	--------------

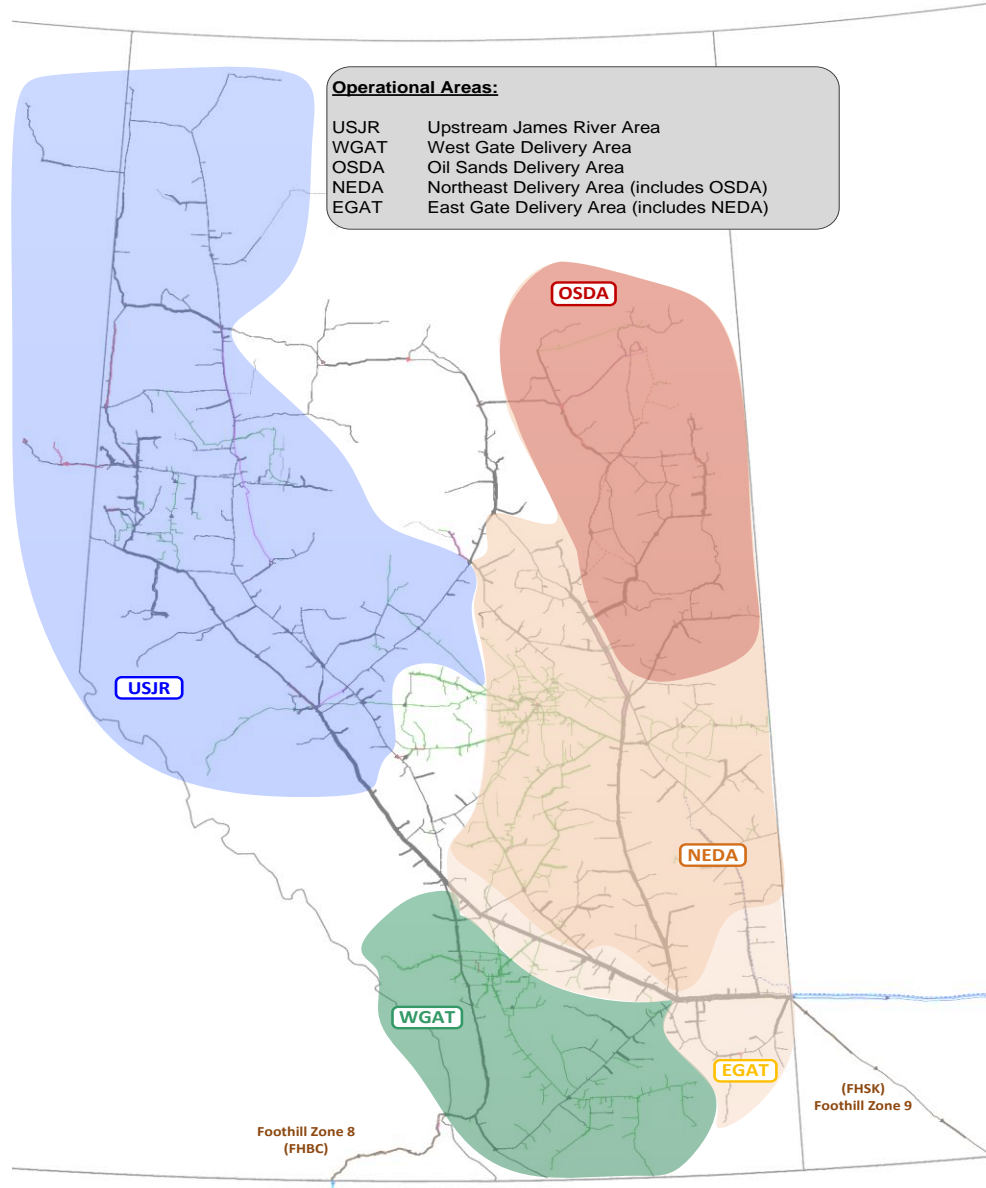
East Central	Marc Fattouche	587.933.4759
---------------------	----------------	--------------

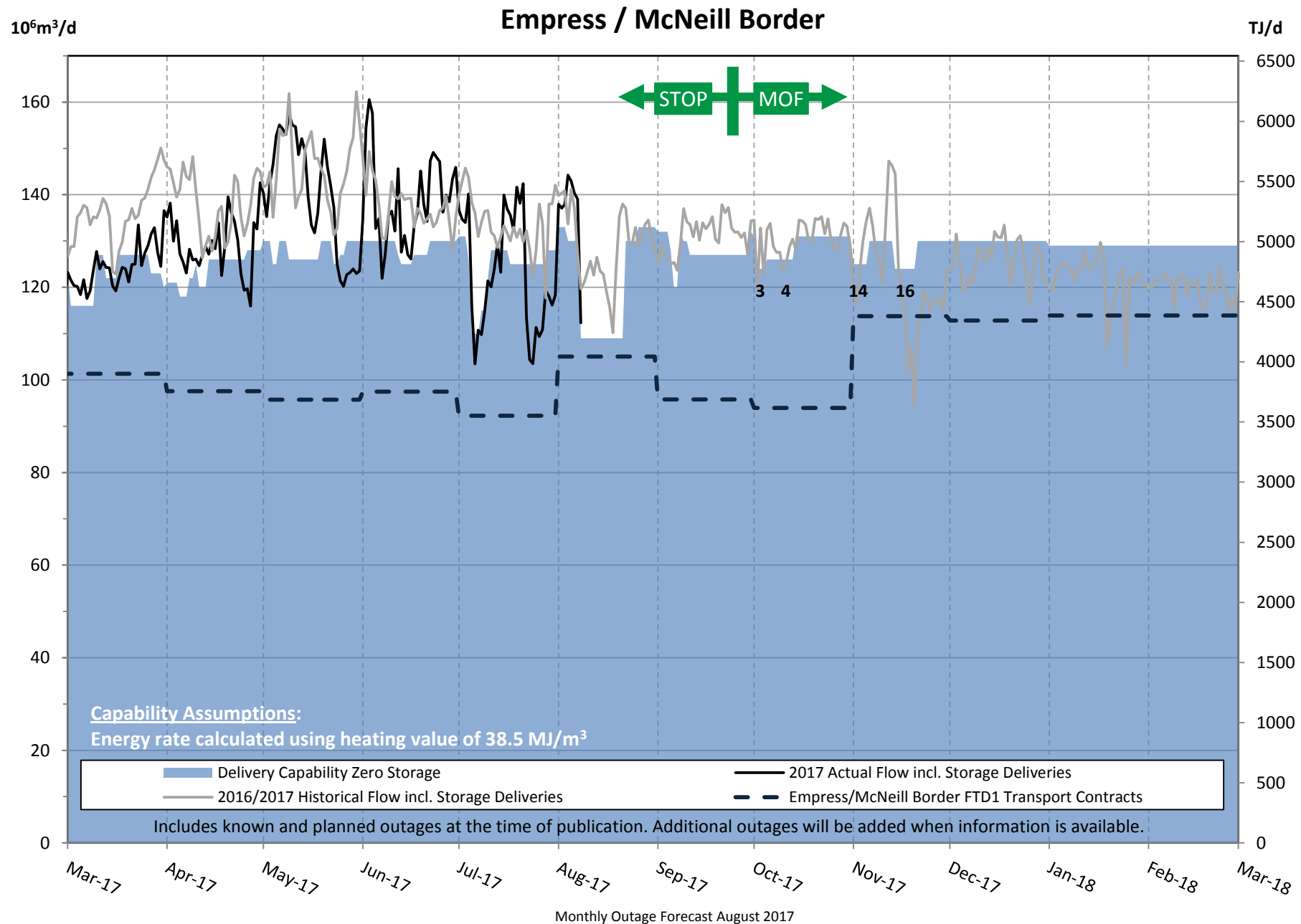
Southwest	Anam M. Ali	403.920.5219
------------------	-------------	--------------

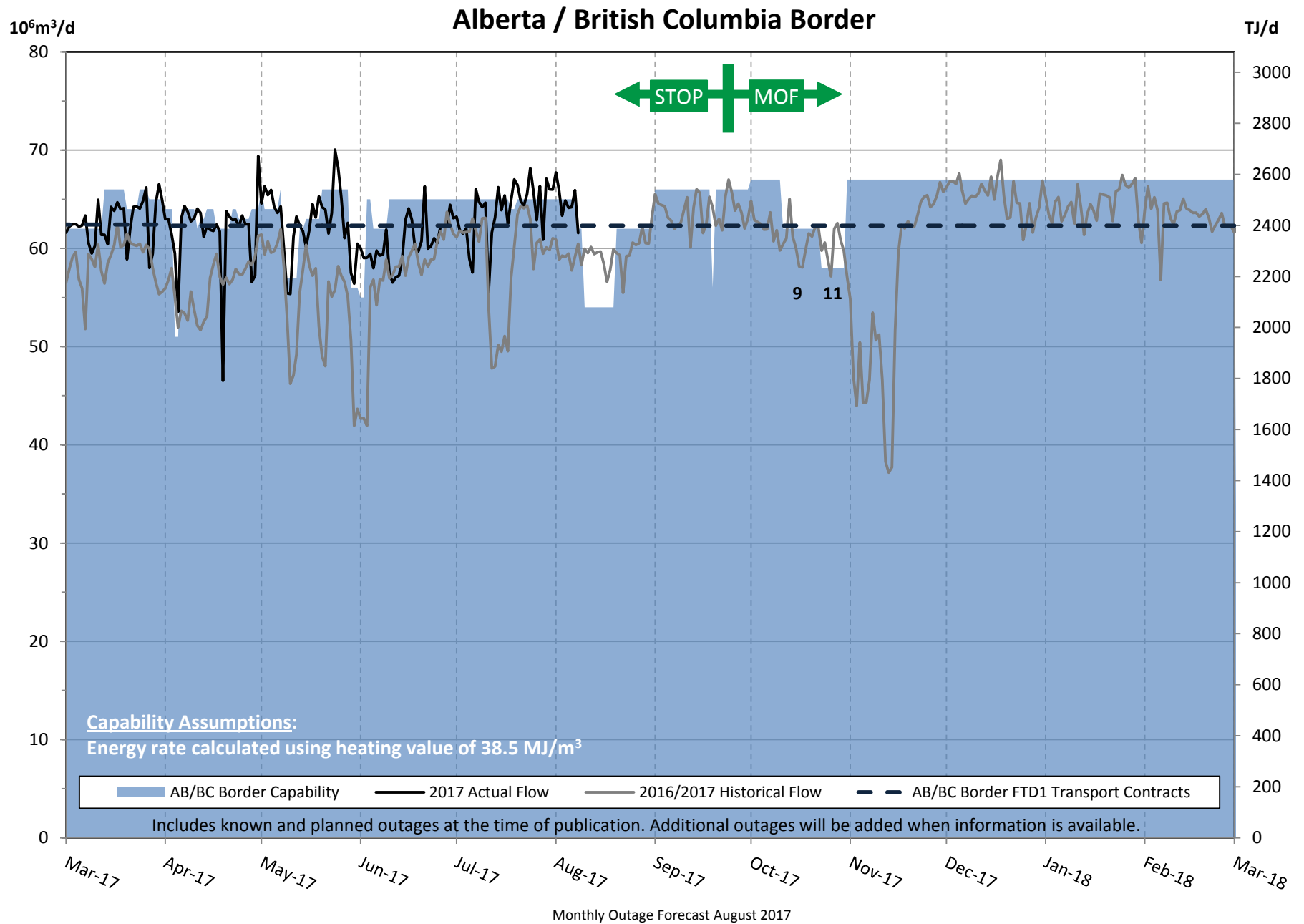
Southeast	Damola Daramola	403.920.6604
------------------	-----------------	--------------

For NGTL System Facilities Segment codes please view link below

<http://www.tccustomerexpress.com/855.html>

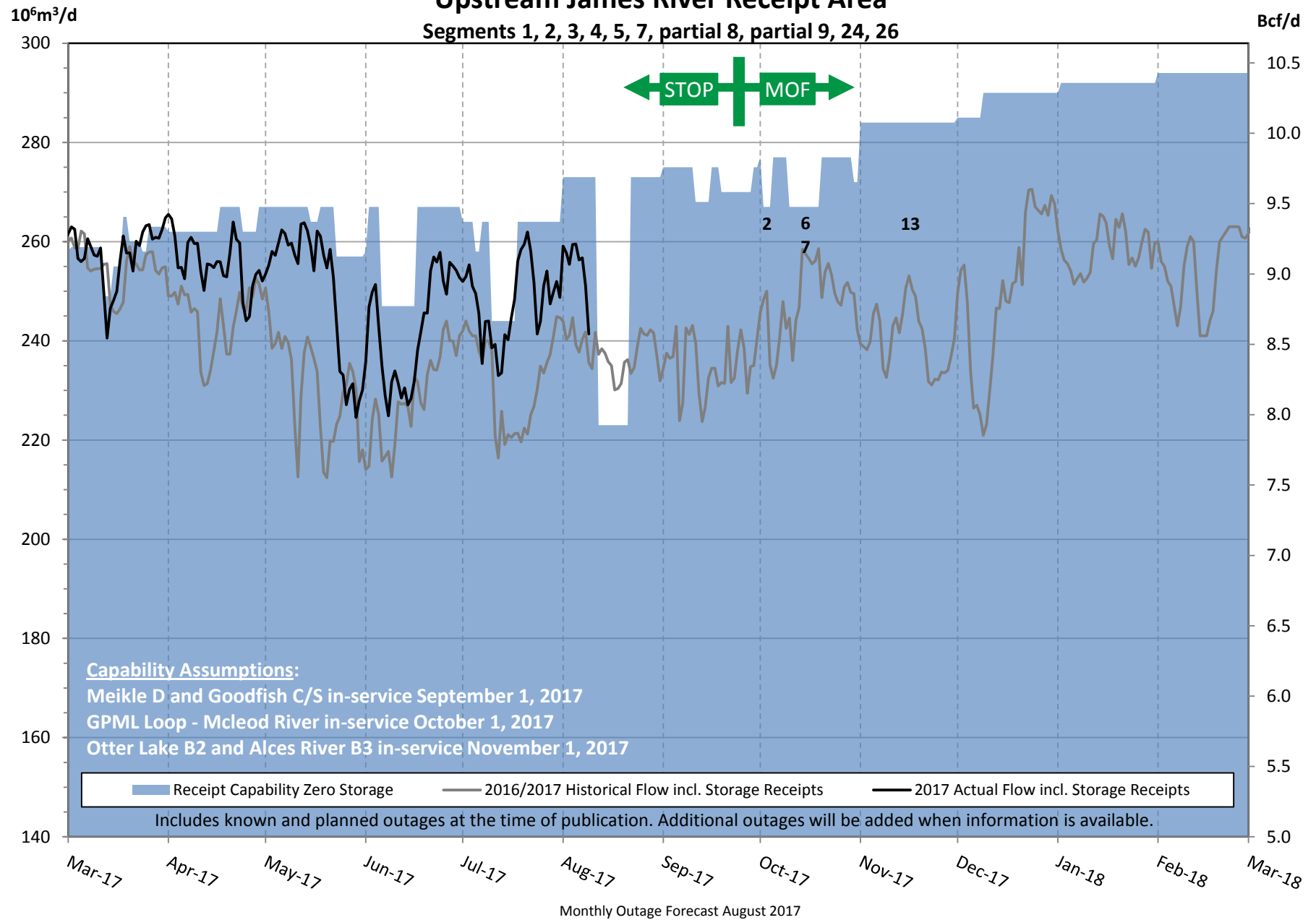


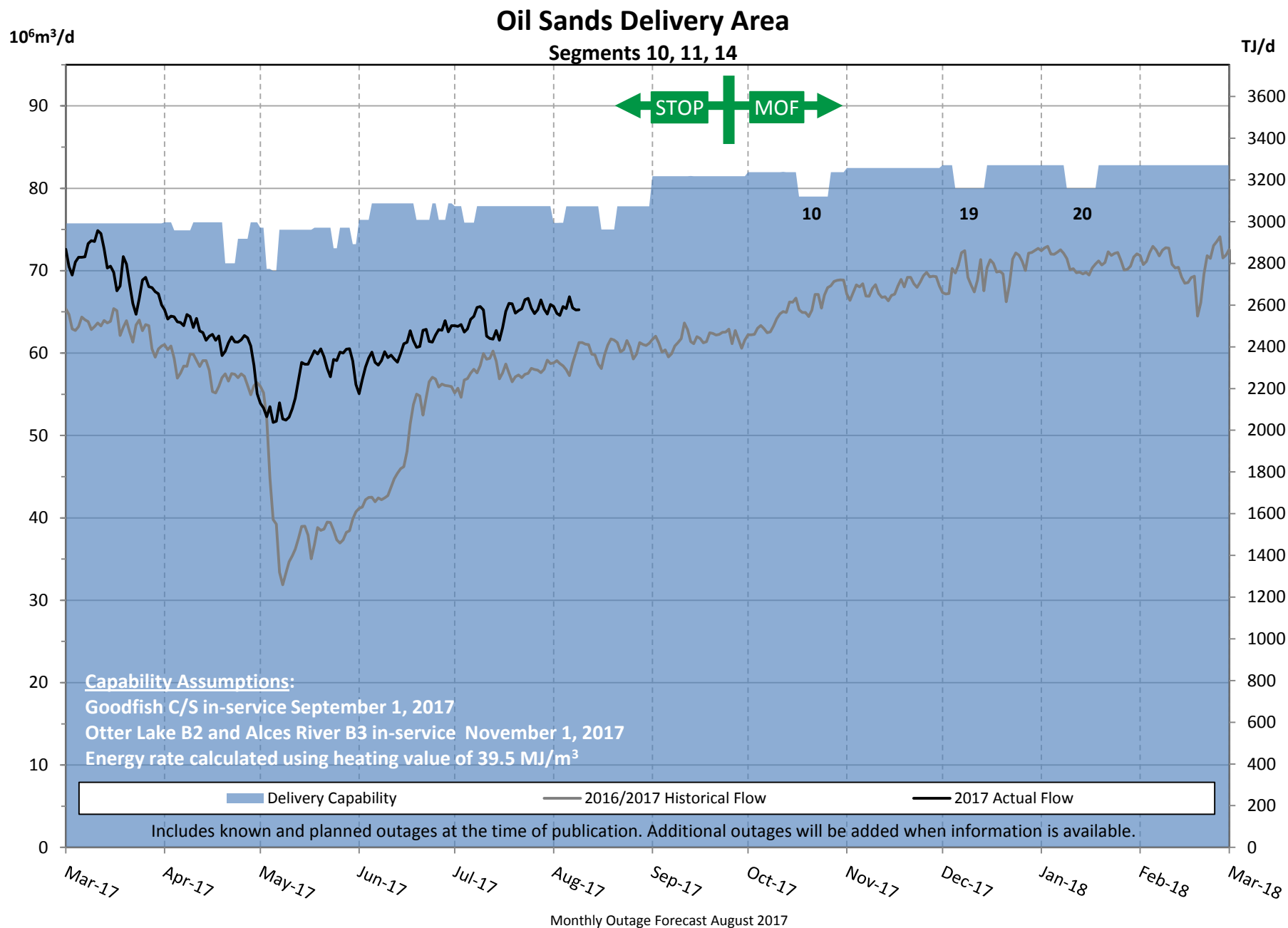




Upstream James River Receipt Area

Segments 1, 2, 3, 4, 5, 7, partial 8, partial 9, 24, 26





NGTL System & Foothills Pipeline - Monthly Outage Forecast August 2017

Area Definitions

USJR	Upstream James River Receipt Area: Groundbirch East, Gordondale, Big Eddy, January Creek, and Rat Creek West interconnects, and all receipt locations in Segments 1, 2, 3, 4, 5, 7, partial 8, partial 9, 24, 26.
EGAT	East Gate Delivery Area: Empress, McNeill, Unity, Cold Lake, Aeco C, Warwick Southeast, Chancellor, Carbon, Severn Creek, and Crossfield interconnects, and all delivery locations in Segments 10, 11, 12, 13, 14, 15, 16, 17, 18, 19, 20, partial 21, 22, 23, partial 28.
• LEGAT	Lower East Gate Delivery Area: Empress, McNeill, Unity, Segments 15, 16, 17, 18, 19, 20, 23, partial 21, partial 28
• NEDA	North and East Delivery Area: Unity, Cold Lake, Warwick Southeast interconnects, and all delivery locations in Segments 10, 11, 12, 13, 14, 15, 16, 17, 23, partial 28:
• OSDA	Oil Sands Delivery Area: Cold Lake interconnect, and all delivery locations in Segments 10, 11, 14.
WGAT	West Gate Delivery Area: Alberta B.C. and Alberta Montana interconnects (Delivery locations in partial Segment 21 and Segment 22 have temporarily been removed)
FHBC	Foothills Zone 8
FHSK	Foothills Zone 9

OUTAGE #	SEG #	OUTAGE DESCRIPTION	DATES		RECEIPT/DELIVERY IMPACT	CONTACT	AREA
			START	FINISH			
1	16	Unity Border M/S - Station Maintenance (4 days within window)	09/25/17	10/05/17	Nil required at Unity Border meter station. Typical Flow 3000 e3m3/d.	Chris Pho	Local
2	5	Knight C/S - Station Maintenance (3 days). Dates Revised.	10/02/17	10/04/17	Potential FT receipt restriction in the Upstream James River Receipt Area. Capability 265 E6m3/d. Typical Flow 255-270 e6m3/d. Potential IT delivery restriction in the Lower East Gate and West Gate Delivery Areas. Nil required at Chickadee Creek # 2, Chickadee Creek Sales, and Carson Creek meter stations.	Chris Pho	USJR EGAT WGAT
3	18	Crawling Valley C/S - Station Maintenance (3 days).	10/02/17	10/04/17	Potential IT delivery restriction in the East Gate Delivery Area. Empress/McNeill delivery Capability 124 E6m3/d. Typical Flow 125-135 e6m3/d.	Damola Daramola	EGAT
4	18	Beiseker #2 - Station Maintenance (12 days).	10/02/17	10/13/17	Potential IT delivery restriction in the East Gate Delivery Area. Empress/McNeill delivery Capability 126 E6m3/d. Typical Flow 125-135 e6m3/d.	Damola Daramola	EGAT
5	13	NPS 16 Redwater Lateral Extension - Pipeline Maintenance (6 days). Dates revised.	10/03/17	10/08/17	Nil required at Newbrook and Weasel Creek meter stations. Typical Flow 20 E3m3/d	Marc Fattouche	Local
6	6	Paul Lake B2 C/S - Station Maintenance (4 days).	10/10/17	10/13/17	Potential FT receipt restriction in the Upstream James River Receipt Area. Capability 270 E6m3/d. Typical Flow 255-270 E6m3/d. Potential IT delivery restriction in the East Gate and West Gate Delivery Areas.	Brooke Penner	USJR EGAT WGAT
7	8	Nordegg C/S - Station Maintenance (10 days). Dates Revised.	10/10/17	10/19/17	Potential FT receipt restriction in the Upstream James River Receipt Area. Capability 267 E6m3/d. Typical Flow 255-270 e6m3/d. Potential IT delivery restriction in the Lower East Gate and West Gate Delivery Areas.	Chris Pho	USJR EGAT WGAT
8	16	NPS 6 Clear Hills Lateral - Pipeline Modifications (4 days).	10/11/17	10/14/17	Nil required at Clear Hills meter station. Typical Flow 25 E3m3/d.	Rahim Ruda	Local

C/S Compressor Station
 M/S Meter Station
 Light Shade Changed Entry
 Dark Shade New Entry

NGTL System & Foothills Pipeline - Monthly Outage Forecast August 2017

Area Definitions

USJR	Upstream James River Receipt Area: Groundbirch East, Gordondale, Big Eddy, January Creek, and Rat Creek West interconnects, and all receipt locations in Segments 1, 2, 3, 4, 5, 7, partial 8, partial 9, 24, 26.
EGAT	East Gate Delivery Area: Empress, McNeill, Unity, Cold Lake, Aeco C, Warwick Southeast, Chancellor, Carbon, Severn Creek, and Crossfield interconnects, and all delivery locations in Segments 10, 11, 12, 13, 14, 15, 16, 17, 18, 19, 20, partial 21, 22, 23, partial 28.
• LEGAT	Lower East Gate Delivery Area: Empress, McNeill, Unity, Segments 15, 16, 17, 18, 19, 20, 23, partial 21, partial 28
• NEDA	North and East Delivery Area: Unity, Cold Lake, Warwick Southeast interconnects, and all delivery locations in Segments 10, 11, 12, 13, 14, 15, 16, 17, 23, partial 28:
• OSDA	Oil Sands Delivery Area: Cold Lake interconnect, and all delivery locations in Segments 10, 11, 14.
WGAT	West Gate Delivery Area: Alberta B.C. and Alberta Montana interconnects (Delivery locations in partial Segment 21 and Segment 22 have temporarily been removed)
FHBC	Foothills Zone 8
FHSK	Foothills Zone 9

OUTAGE #	SEG #	OUTAGE DESCRIPTION	DATES		RECEIPT/DELIVERY IMPACT	CONTACT	AREA
			START	FINISH			
9	6	NPS 42 Western Alberta System Mainline Loop - Pipeline Maintenance (11 days).	10/11/17	10/21/17	Potential FT delivery restriction in the West Gate Delivery Area. Alberta B. C. Capability 62 E6m3/d. Typical Flow 57-64 E6m3/d.	Anam M.Ali	WGAT
10	10	NPS 16 Pelican Mainline - Pipeline Modifications (10 days).	10/17/17	10/26/17	Potential IT delivery restriction in the Oil Sands Delivery Area. Capability 79 E6m3/d. Typical Flow 65-75 E6m3/d.	Brooke Penner	OSDA
11	21	NPS 36 Foothills Zone 7 - Pipeline Maintenance (8 days). Dates Revised.	10/23/17	10/30/17	Potential FT delivery restriction in the West Gate Delivery Area. Alberta B. C. Capability 58 E6m3/d. Typical Flow 57-64 E6m3/d.	Anam M.Ali	WGAT
12	23	NPS 8 Wainwright East Lateral - Pipeline Modifications (7 days).	10/24/17	10/30/17	Nil required at Wainwright East meter station. Typical Flow 35 E3m3/d.	Marc Fattouche	Local
13	8	Clearwater #5 - Unit Modifications (40 days).	10/30/17	12/08/17	Probable IT receipt restriction in the Upstream James River Receipt Area. Capability 284 E6m3/d. Typical Flow 255-290 e6m3/d (including storage withdrawal). Potential IT delivery restriction in the Lower East Gate and West Gate Delivery Areas.	Chris Pho	USJR EGAT WGAT
14	19	NPS 36 Eastern Alberta System Mainline Loop #2 - Pipeline Maintenance (5 days).	11/01/17	11/05/17	Potential IT delivery restriction in the East Gate Delivery Area. Empress/McNeill delivery Capability 125 E6m3/d. Typical Flow 125-135 E6m3/d.	Damola Daramola	EGAT
15	12	NPS 10 Hairy Hills Lateral - Pipeline Modifications (7 days).	11/01/17	11/06/17	Nil required at Hairy Hill meter station. Typical Flow 55 E3m3/d.	Marc Fattouche	Local
16	19	NPS 34 Eastern Alberta System Mainline Loop & Central Alberta System Mainline - Pipeline Maintenance (7 days).	11/14/17	11/20/17	Potential IT delivery restriction in the East Gate Delivery Area. Empress/McNeill Capability 124 E6m3/d. Typical Flow 125-135 E6m3/d.	Damola Daramola	EGAT

C/S Compressor Station
 M/S Meter Station
 Light Shade Changed Entry
 Dark Shade New Entry

NGTL System & Foothills Pipeline - Monthly Outage Forecast August 2017

Area Definitions

USJR Upstream James River Receipt Area: Groundbirch East, Gordondale, Big Eddy, January Creek, and Rat Creek West interconnects, and all receipt locations in Segments 1, 2, 3, 4, 5, 7, partial 8, partial 9, 24, 26.

EGAT East Gate Delivery Area: Empress, McNeill, Unity, Cold Lake, Aeco C, Warwick Southeast, Chancellor, Carbon, Severn Creek, and Crossfield interconnects, and all delivery locations in Segments 10, 11, 12, 13, 14, 15, 16, 17, 18, 19, 20, partial 21, 22, 23, partial 28.

- **LEGAT** Lower East Gate Delivery Area: Empress, McNeill, Unity, Segments 15, 16, 17, 18, 19, 20, 23, partial 21, partial 28
- **NEDA** North and East Delivery Area: Unity, Cold Lake, Warwick Southeast interconnects, and all delivery locations in Segments 10, 11, 12, 13, 14, 15, 16, 17, 23, partial 28:
- **OSDA** Oil Sands Delivery Area: Cold Lake interconnect, and all delivery locations in Segments 10, 11, 14.

WGAT West Gate Delivery Area: Alberta B.C. and Alberta Montana interconnects (Delivery locations in partial Segment 21 and Segment 22 have temporarily been removed)

FHBC Foothills Zone 8

FHSK Foothills Zone 9

OUTAGE #	SEG #	OUTAGE DESCRIPTION	DATES		RECEIPT/DELIVERY IMPACT	CONTACT	AREA
			START	FINISH			
17	16	NPS 8 Kessler Lateral - Pipeline Modifications (6 days).	11/20/17	11/25/17	Nil required at Provost Kessler and Provost West meter stations. Typical Flow 130 E3m3/d.	Marc Fattouche	Local
18	19	NPS 10 Iddesleigh South Lateral - Pipeline Modifications (4 days).	12/04/17	12/07/17	Nil required at Iddesleigh South meter station. Typical Flow 115 E3m3/d.	Rahim Ruda	Local
19	10	NPS 16 Pelican Mainline - Pipeline Modifications (10 days).	12/05/17	12/14/17	Potential IT delivery restriction in the Oil Sands Delivery Area. Capability 80 E6m3/d. Typical Flow 65-75 E6m3/d.	Brooke Penner	OSDA
20	10	NPS 16 Pelican Mainline - Pipeline Modifications (10 days).	01/09/18	01/18/18	Potential IT delivery restriction in the Oil Sands Delivery Area. Capability 80 E6m3/d. Typical Flow 65-75 E6m3/d.	Brooke Penner	OSDA

C/S Compressor Station
M/S Meter Station
Light Shade Changed Entry
Dark Shade New Entry